

Western Wilderness



Cradle Mountain-Lake St Clair National Park

Tasmania's wild west is what everybody talks about, and deservedly so. Here lies some of the most spectacular World Heritage Listed scenery on the planet.

Most famous of all is Dove Lake, where Cradle Mountain's reflection can be seen in the cool still water. This is a landscape of steep gorges, wild rivers and thick damp forests. Hikers can tackle the 65 kilometre Overland Track, which begins in Cradle Mountain.

At the southern end of Cradle Mountain is Lake St Clair, Australia's deepest freshwater lake. Canoe, walk, fish or just enjoy the beauty – the choice is yours.

Queenstown was once the world's richest gold and copper mine, and the ride into town is 90 bends along a spiralling road. Travel to Strahan, your gateway to Sarah Island. If it's convict history you're after, this is where you'll find it at Macquarie Harbour. From here cruise the Gordon River, raft the Franklin, and board the Wilderness Railway steam train.

Drive north to the temperate rainforest of the Tarkine, take the vehicular barge to the town of Corinna, and travel on to Zeehan where the Pioneers Memorial Museum will take you back in time. Once bustling mining towns, Rosebery and Tullah are now quiet havens providing a welcoming break to travellers.

Tarraleah is another standout location. Remember the Hydro Electric scheme? Back in the 1920s and 1930s the town was packed with timber cottages built for hydro workers. Now they serve as a wilderness resort.

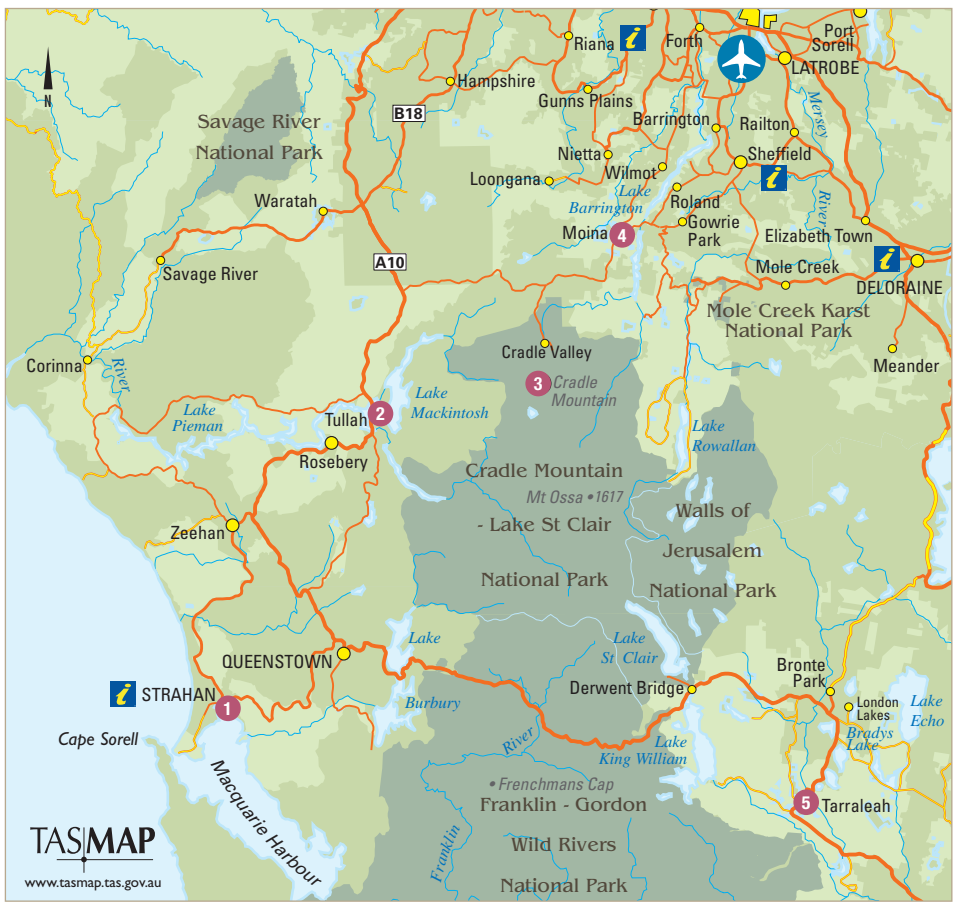
Our Favourites

Take an early morning kayak on Dove Lake

Cruise across Lake St Clair – the deepest lake in the southern hemisphere

Journey out through Hells Gates on a Gordon River Cruise

Take a journey on the historic West Coast Wilderness Railway



FIND YOUR ACCOMMODATION

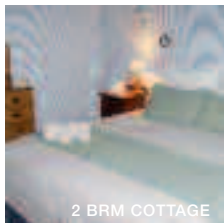
REF.	APARTMENTS	PAGE
3	Cradle Mountain Wilderness Village ★★★★★	48
1	Marsden Court ◆◆◆◆	45
1	McIntosh Cottages ★★★☆	45
1	Risby Cove ◆◆◆◆	45
5	The Cottages at Tarraleah ◆◆◆◆◆	47

REF.	HOTELS	PAGE
3	Cradle Mountain Chateau ★★★★★	48
3	Cradle Mountain Lodge ◆◆◆◆◆	48
4	Lemonthyme Lodge ★★★★★	47
1	Motel Strahan ★★★★★	45
1	Strahan Village ★★★★★	46
2	The Tullah Lakeside Lodge ◆◆◆	46



Strahan

McIntosh Cottages, Strahan ★★☆☆



2 BRM COTTAGE

Fully restored cottages located at the main street of Strahan, featuring a romantic wood fire, comfortable king size bed and much more.

Town Centre 500m
Map page 44 Ref. 1

18 Harvey Street, Strahan

PROPERTY FEATURES:

- Room service (limited)
- Fireplace ▪ Guest lounge
- DVD library ▪ Guest laundry
- Parking ▪ Non smoking

ACCOMMODATION FEATURES:

- Kitchen with microwave and dishwasher
- Tea/coffee making facilities
- CD/DVD player
- Laundry ▪ Ironing facilities
- Hair dryer

Room serviced daily



From \$80 PER ROOM PER NIGHT*

1 APR – 31 MAY, 1 OCT – 20 DEC 11 [^]	ADULTS	1 NT	3 NTS	5 NTS
1 Bedroom Cottage	1 to 2	160	420	560
2 Bedroom Cottage	1 to 2	170	450	600
1 JUN – 30 SEP 11 [^]	ADULTS	1 NT	3 NTS	5 NTS
1 Bedroom Cottage	1 to 2	120	300	400
2 Bedroom Cottage	1 to 2	140	360	480
16 JAN – 31 MAR 12	ADULTS	1 NT	3 NTS	5 NTS
1 Bedroom Cottage	1 to 2	180	510	850
2 Bedroom Cottage	1 to 2	190	540	900

Other prices apply 1 Oct 10 – 31 Mar 11, 21 Dec 11 – 15 Jan 12.

Children 0 to 2 years – cot/bed charge payable direct.
3 to 14 years – \$20 per child per night.

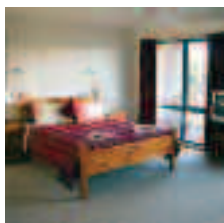
Max capacity 1 Bedroom Cottage – 3, 2 Bedroom Cottage – 5.

MCSIRN

TRAVELPOINT BONUS

[^] FREE Night Offer: Stay 5 nights, pay for 4.
(5 night price includes 1 free night)

Marsden Court, Strahan ◆◆◆◆



Marsden Court offers self-catering units set in landscaped gardens and leafy surrounds. Handy location to all of Strahan's attractions.

Town Centre 500m
Map page 44 Ref. 1

Corner Andrew and Gaffney Street, Strahan

PROPERTY FEATURES:

- Internet facilities
- Guest laundry
- Parking
- Non smoking

ACCOMMODATION FEATURES:

- Air-conditioning
- Limited cooking facilities with microwave
- CD/DVD player (2 Bedrooms)
- Ironing facilities
- Hair dryer

Room serviced daily



From \$160 PER ROOM PER NIGHT*

24 DEC 10 – 30 APR 11	ADULTS	2 NTS	5 NTS	7 NTS
Studio	1 to 2	410	1025	1435
2 Bedroom	1 to 4	550	1375	1925
1 MAY – 31 AUG 11	ADULTS	1 NT	3 NTS	5 NTS
Studio	1 to 2	160	480	800
2 Bedroom	1 to 4	230	690	1150
1 SEP – 23 DEC 11	ADULTS	1 NT	3 NTS	5 NTS
Studio	1 to 2	195	585	975
2 Bedroom	1 to 4	265	795	1325
24 DEC 11 – 31 MAR 12	ADULTS	1 NT	2 NTS	5 NTS
Studio	1 to 2	210	420	1050
2 Bedroom	1 to 4	280	560	1400

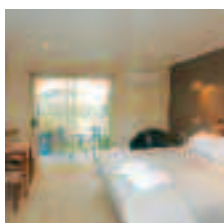
2 night minimum stay applies 24 Dec 11 – 20 Jan 12. 1 night stay available 1 – 30 Apr 11. Other prices apply 1 Oct – 23 Dec 10.

Children 0 to 2 years – cot/bed charge payable direct.
3 to 14 years – \$33 per child per night, valid 1 Oct 10 – 31 Mar 11.
\$25 per child per night, valid 1 Apr 11 – 31 Mar 12.

Max capacity Studio – 3, 2 Bedroom – 6.

MARSRN

Motel Strahan ★★☆☆



Motel Strahan is located only minutes from the town centre and features stylish contemporary accommodation.

Town Centre 1km
Map page 44 Ref. 1

3 Andrew Street, Strahan

PROPERTY FEATURES:

- Guest laundry
- Parking

ACCOMMODATION FEATURES:

- Air-conditioning
- Tea/coffee making facilities
- Spa bath (Deluxe Rooms)
- Cable TV
- DVD player
- Ironing facilities
- Hair dryer

Room serviced daily

From \$155 PER ROOM PER NIGHT*

16 DEC 10 – 15 APR 11	ADULTS	1 NT	3 NTS	5 NTS
Standard	1 to 2	170	510	850
Deluxe	1 to 2	185	555	925
1 OCT – 15 DEC 10, 16 APR – 30 SEP 11	ADULTS	1 NT	3 NTS	5 NTS
Standard	1 to 2	155	465	775
Deluxe	1 to 2	170	510	850
1 OCT – 15 DEC 11	ADULTS	1 NT	3 NTS	5 NTS
Standard	1 to 2	160	480	800
Deluxe	1 to 2	175	525	875
16 DEC 11 – 31 MAR 12	ADULTS	1 NT	2 NTS	5 NTS
Standard	1 to 2	175	350	875
Deluxe	1 to 2	190	380	950

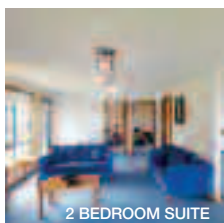
2 night minimum stay applies 16 Dec 11 – 15 Jan 12.

Children 0 to 2 years – cot free of charge.
3 to 14 years – adult prices apply.

Max capacity 2.

MOTSRN

Risby Cove, Strahan ◆◆◆◆



2 BEDROOM SUITE

Rustic yet contemporary, Risby Cove is a stylish property ideally located on Strahan's beautiful waterfront.

Town Centre 200m
Map page 44 Ref. 1

The Esplanade, Strahan

PROPERTY FEATURES:

- Restaurant
- Bar
- Room service (limited)
- Parking

ACCOMMODATION FEATURES:

- Mini bar
- Limited cooking facilities
- Spa
- Hair dryer

Room serviced daily

From \$160 PER ROOM PER NIGHT*

1 OCT 10 – 30 APR 11	ADULTS	1 NT	3 NTS	5 NTS
Standard	1 to 2	200	600	1000
Spa Suite/1 Bedroom Suite	1 to 2	226	678	1130
2 Bedroom Suite	1 to 2	244	732	1220
1 MAY – 30 SEP 11	ADULTS	1 NT	3 NTS	5 NTS
Standard	1 to 2	160	480	800
Spa Suite/1 Bedroom Suite	1 to 2	186	558	930
2 Bedroom Suite	1 to 2	204	612	1020
1 OCT 11 – 31 MAR 12	ADULTS	1 NT	3 NTS	5 NTS
Standard	1 to 2	210	630	1050
Spa Suite/1 Bedroom Suite	1 to 2	240	720	1200
2 Bedroom Suite	1 to 2	256	768	1280

Children 0 to 2 years – cot free of charge.
3 to 14 years – \$30 per child per night.

Max capacity Standard/1 Bedroom Suite – 2, Spa Suite – 3,
2 Bedroom Suite – 4.

RISSRN

Strahan and Tullah

Strahan Village, Strahan ★★★★★



The Esplanade, Strahan
 Located on the shores of Macquarie Harbour, Strahan Village offers a wide range of accommodation and dining options to suit all travellers. From beautifully appointed individual cottages and terraces that recall an old-world charm, to stylishly appointed rooms on the waterfront hilltop accommodation has sweeping views over the water and magnificent sunset views from their private decks.

- PROPERTY FEATURES:**
- Restaurant ▪ Bar and bistro
 - Café ▪ Gift shop
 - Lounge area with Cable TV
 - Guest laundry ▪ Parking
- ACCOMMODATION FEATURES:**
- Heating ▪ Tea/coffee making facilities
 - Refrigerator ▪ Ironing facilities
 - Hair dryer
- Room serviced daily**
 Town Centre 30m
 Map page 44 Ref. 1

From \$112 PER ROOM PER NIGHT*				
21 DEC 10 – 8 APR 11, 10 – 30 APR 11	ADULTS	1 NT	3 NTS	5 NTS
Hilltop Garden Standard	1 to 2	168	504	840
Village Garden Terrace	1 to 2	176	528	880
Village Waterfront Terrace	1 to 2	208	624	1040
1 MAY – 20 DEC 11	ADULTS	1 NT	3 NTS	5 NTS
Hilltop Garden Standard	1 to 2	112	336	560
Village Garden Terrace	1 to 2	117	351	585
Village Waterfront Terrace	1 to 2	139	417	695
21 – 28 DEC 11, 4 JAN – 31 MAR 12	ADULTS	1 NT	3 NTS	5 NTS
Hilltop Garden Standard	1 to 2	176	528	880
Village Garden Terrace	1 to 2	184	552	920
Village Waterfront Terrace	1 to 2	216	648	1080

Other prices apply 1 Oct – 20 Dec 10, 9 Apr 11, 29 Dec 11 – 3 Jan 12. Other room types also available.

Children 0 to 14 years – Free when sharing with an adult and using existing bedding. Cot free of charge.

Max capacity Hilltop Garden Standard – 4, Village Garden Terrace/Village Waterfront Terrace – 2.

STRSRN

GORDON RIVER PADDLE

The full day signature experience combines a cruise on Lady Jane Franklin II with a sea kayak trip on the Gordon River.

INCLUDES:

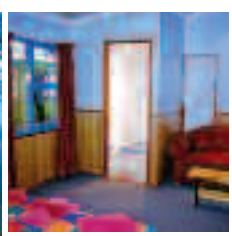
- Gordon River Cruise
- Kayak
- Morning and afternoon tea
- Lunch

Departs: Daily at 7:30am
Returns: 8:15pm

PRICE PER PERSON	1 OCT 10 – 30 SEP 11	1 OCT 11 – 31 MAR 12
Adult/Child 10-14 years	\$365	\$380

GORSRN

The Tullah Lakeside Lodge, Tullah ◆◆◆



Farrell Street, Tullah

PROPERTY FEATURES:

- Restaurant
- Bar
- Internet lounge
- Conference facilities
- Guest laundry
- Parking

ACCOMMODATION FEATURES:

- Heating
- Tea/coffee making facilities
- Internet access (wireless)
- Hair dryer

Room serviced daily
 Town Centre 100m
 Map page 44 Ref. 2

Located between Cradle Mountain and Strahan, set on the shores of Lake Rosebery, surrounded by spectacular mountains.

From \$115 PER ROOM PER NIGHT*

1 OCT 10 – 30 APR 11	ADULTS	1 NT	3 NTS	5 NTS
Room with ensuite	1 to 2	130	390	650
Premium Room	1 to 2	180	540	900
1 MAY – 30 SEP 11	ADULTS	1 NT	3 NTS	5 NTS
Room with ensuite	1 to 2	115	345	575
Premium Room	1 to 2	145	435	725
1 OCT 11 – 31 MAR 12	ADULTS	1 NT	3 NTS	5 NTS
Room with ensuite	1 to 2	140	420	700
Premium Room	1 to 2	190	570	950

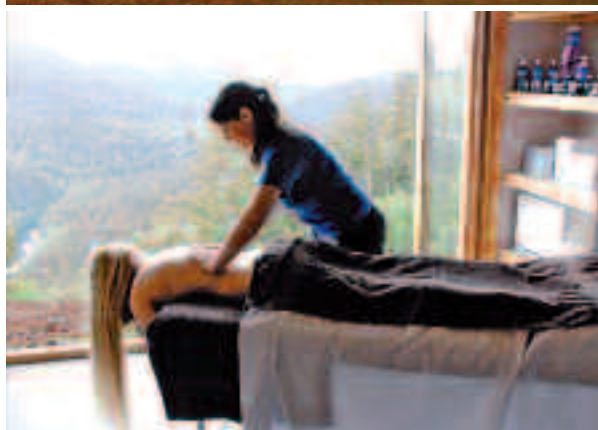
Children 0 to 2 years – cot free of charge. 3 to 14 years – adult prices apply.

Max capacity 3.

TULTAS



The Cottages at Tarraleah ◆◆◆◆◆



Wild River Road, Tarraleah

Ninety minutes from Hobart, on the edge of World Heritage wilderness. Enjoy local walks, waterfalls, play golf, go fly-fishing, meet baby animals or visit the spa. Boat trips, National Parks, craft and wilderness are all nearby. These cottages are large, beautifully presented with everything required for a very relaxed stay. Choose comfortable, stylish art-deco or luxurious accommodation.

PROPERTY FEATURES:

- Restaurant
- Tavern
- Day spa
- Golf course (9 hole)
- Squash court
- DVD library
- Shop
- Children's playground
- Tours and activities (extra charge)

ACCOMMODATION FEATURES:

- Fireplace
- Air-conditioning
- Art deco features
- CD/DVD player
- Kitchen with microwave
- Internet access (broadband)
- Laundry

Room serviced daily

Shop on-site
Hobart 125km
Map page 44 Ref. 5



1 MAY – 31 OCT 11	ADULTS	1 NT	3 NTS	5 NTS
Engineers Cottage	1 to 2	180	540	900
Architects Cottage	1 to 2	240	720	1200
Superintendents Cottage	1 to 2	380	1140	1900
1 – 30 APR, 1 NOV 11 – 31 MAR 12	ADULTS	1 NT	3 NTS	5 NTS
Engineers Cottage	1 to 2	220	660	1100
Architects Cottage	1 to 2	280	840	1400
Superintendents Cottage	1 to 2	380	1140	1900

Other prices apply 1 Oct 10 – 31 Mar 11.

Includes	Breakfast hamper daily.
-----------------	-------------------------

Children 0 to 4 years – cot free of charge.
5 to 19 years – adult prices apply.

Max capacity 6.

TAETAS

Lemonthyme Lodge ★★★★★



TREETOP CABIN



Dolcoath Road, Moina

A boutique wilderness resort hideaway, nestled in the heart of the Cradle Mountain Valley.

Escape the city and relax in this resort hideaway situated 65 kilometres south of Devonport and 40 minutes from Cradle Mountain.

Stroll through Weindorfes forest and trek around Dove Lake, there are many nature walks on offer to suit all fitness levels.

PROPERTY FEATURES:

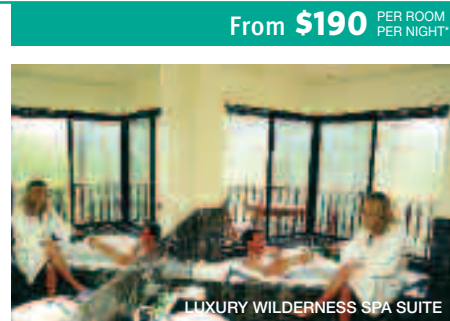
- Restaurant
- Room service (limited)
- Bar
- Massage treatments
- Barbecue area
- Theatrette
- Waterfall walks
- Guest laundry
- Parking

ACCOMMODATION FEATURES:

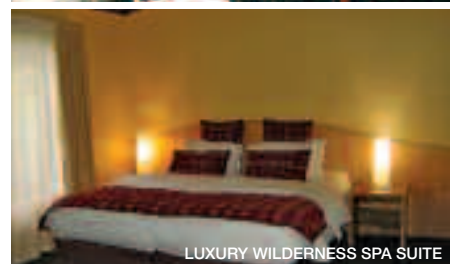
- Balcony
- Gas log fire
- Tea/coffee making facilities
- Mini bar
- Internet access (wireless)
- Spa (Tree Top Spa Cabins and Luxury Wilderness Spa Suites)

Room serviced daily

Shop 25km
Devonport 65km
Map page 44 Ref. 4



LUXURY WILDERNESS SPA SUITE



LUXURY WILDERNESS SPA SUITE

1 OCT 10 – 30 APR, 1 OCT 11 – 31 MAR 12	ADULTS	1 NT	3 NTS	5 NTS
Treetop Cabin	1 to 2	285	855	1425
Treetop Spa Cabin	1 to 2	315	945	1575
2 Bedroom Cabin	1 to 2	315	945	1575
Luxury Wilderness Spa Suite	1 to 2	395	1185	1975
1 MAY – 30 SEP 11	ADULTS	1 NT	3 NTS	5 NTS
Treetop Cabin	1 to 2	190	570	950
Treetop Spa Cabin	1 to 2	225	675	1125
2 Bedroom Cabin	1 to 2	225	675	1125
Luxury Wilderness Spa Suite	1 to 2	280	840	1400

Includes	Full breakfast daily.
-----------------	-----------------------

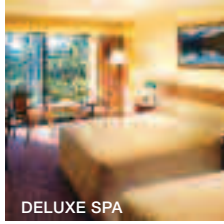
Children 0 to 2 years – cot free of charge.
3 to 13 years – \$25 per child per night.

Max capacity Treetop Cabin/Tree Top Spa Cabin/Luxury Wilderness Spa Suite – 2 adults/1 child,
2 Bedroom Cabin – 5.

LEMCMN

Cradle Mountain

Cradle Mountain Chateau ★★★★★



DELUXE SPA

In a serene alpine woodland setting, the Chateau is the perfect base to explore the ice carved mountain scenery of the Cradle.

Sheffield 60km
Map page 44 Ref. 3

Cradle Mountain Road, Cradle Mountain

PROPERTY FEATURES:

- Restaurants (2) ▪ Bar
- Wilderness Gallery ▪ Day spa
- Gift shop ▪ Library ▪ Internet facilities
- Billiard table ▪ Massage facilities
- Guest laundry ▪ Parking

ACCOMMODATION FEATURES:

- Heating
- Tea/coffee making facilities
- Refrigerator
- Ironing facilities
- Hair dryer

Room serviced daily



From **\$145** PER ROOM PER NIGHT*

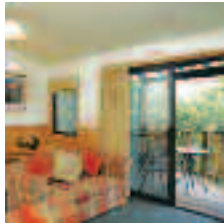
Period	ADULTS	1 NT	3 NTS	5 NTS
1 OCT 10 – 20 DEC 10				
Deluxe	1 to 2	145	435	725
Deluxe Spa	1 to 2	164	492	820
21 DEC 10 – 20 APR, 26 – 30 APR 11				
Deluxe	1 to 2	232	696	1160
Deluxe Spa	1 to 2	256	768	1280
1 MAY – 20 DEC 11				
Deluxe	1 to 2	151	453	755
Deluxe Spa	1 to 2	167	501	835
21 – 25 DEC 11, 7 JAN – 31 MAR 12				
Deluxe	1 to 2	236	708	1180
Deluxe Spa	1 to 2	260	780	1300

Other prices apply 21 – 25 Apr, 26 Dec 11 – 6 Jan 12. Split Level King Spa Room prices also available.

Children 0 to 3 years – cot free of charge.
4 to 14 years – 1 child free when sharing with an adult and using existing bedding.

Max capacity 4. **CMCCMN**

Cradle Mountain Wilderness Village ★★★★★



Nestled in a secluded bush setting in the Cradle Valley, the village offers private cottages surrounded by native plants and wildlife.

Sheffield 60km
Map page 44 Ref. 3

Cradle Mountain Road, Cradle Mountain

PROPERTY FEATURES:

- Honesty bar in guest lounge
- Internet facilities
- Internet access (wireless)
- Guest laundry
- Parking ▪ Non smoking

ACCOMMODATION FEATURES:

- Balcony
- Limited cooking facilities with microwave
- Spa bath (Premium Chalets)
- Cable TV
- Ironing facilities ▪ Hair dryer

Room serviced daily



From **\$195** PER ROOM PER NIGHT*

Period	ADULTS	1 NT	3 NTS	5 NTS
1 OCT 10 – 30 APR 11				
1 Bedroom Cottage	1 to 2	195	585	975
2 Bedroom Chalet	1 to 4	270	810	1350
Premium Studio Spa	1 to 2	270	810	1350
1 MAY – 30 SEP 11				
1 Bedroom Cottage	1 to 2	195	585	975
2 Bedroom Chalet	1 to 4	260	780	1300
Premium Studio Spa	1 to 2	260	780	1300
1 OCT 11 – 31 MAR 12				
1 Bedroom Cottage	1 to 2	220	660	1100
2 Bedroom Chalet	1 to 4	290	870	1450
Premium Studio Spa	1 to 2	290	870	1450

2 night minimum stay applies 25 Dec 10 – 26 Jan 11, 22 – 25 Apr 11, 25 Dec 11 – 26 Jan 12. Other room types also available.

Children 0 to 2 years – cot free of charge.
3 to 14 years – \$20 per child per night.

Max capacity 1 Bedroom Cottage – 3 adults or 2 adults/
2 children, 2 Bedroom Chalet/2 Bedroom Premium Chalet – 4, Premium Studio Spa – 2. **CMWCMN**

Cradle Mountain Lodge ◆◆◆◆◆



WALDHEIM ALPINE SPA

Cradle Mountain Road, Cradle Mountain

Cradle Mountain Lodge is considered one of Australia's iconic wilderness experiences. Located on the edge of the spectacular World Heritage Cradle Mountain-Lake St Clair National Park, one of Tasmania's premier wilderness regions. Cradle Mountain Lodge is the perfect haven to escape, rejuvenate and indulge.

PROPERTY FEATURES:

- Restaurant ▪ Bistro ▪ Bars (2) ▪ Internet facilities ▪ Guided walks
- Pool table and darts ▪ Waldheim Alpine Spa (day spa) ▪ Wine cellar
- Guest lounge ▪ General store ▪ Flora and fauna reference library
- Over 20 walking tracks ▪ Guest television ▪ Guest laundry ▪ Parking

ACCOMMODATION FEATURES:

- Gas or wood fire ▪ CD player and a selection of CDs
- Tea/coffee making facilities ▪ Mini bar ▪ Ironing facilities ▪ Hair dryer

Room serviced daily

Sheffield 60km
Map page 44 Ref. 3



From **\$251** PER ROOM PER NIGHT*



KING BILLY SUITE

Period	ADULTS	1 NT	3 NTS	5 NTS
1 – 30 APR, 1 OCT 11 – 31 MAR 12				
Pencil Pine Cabin	1 to 2	320	816	1360
Spa Cabin	1 to 2	396	1011	1685
Spa Suite	1 to 2	484	1236	2060
King Billy Suite	1 to 2	760	1941	3235
1 MAY – 30 SEP 11				
Pencil Pine Cabin	1 to 2	251	753	1255
Spa Cabin	1 to 2	309	927	1545
Spa Suite	1 to 2	379	1137	1895
King Billy Suite	1 to 2	593	1779	2965

Other prices apply 1 Oct 10 – 31 Mar 11. Family Cabin prices also available.

Includes Full buffet breakfast daily.

Children 0 to 12 years – free when sharing with an adult and using existing bedding.

Max capacity Pencil Pine Cabin – 4, Spa Cabin/Spa Suite – 3, King Billy Suite – 3. **CRACMN**

TRAVELPOINT BONUS

FREE breakfast for up to 2 children when dining with paying adults in the hotel restaurant.

World Heritage Cruise



On board the new vessel Eagle, enjoy the natural and historic features of Macquarie Harbour including Hells Gate and a guided tour of Sarah Island before entering the Gordon River.

INCLUDES:

- Sarah Island guided tour
- Heritage Landing guided tour
- Buffet lunch (Morning tour)
- Buffet dinner (Afternoon tour)
- Expert guide and commentary

Departs: From Strahan Wharf
 Morning Cruise: Daily at 9am
 Afternoon Cruise: Daily at 3pm (29 Dec 10 – 31 Mar 11, 29 Dec 11 – 31 Mar 12)

Returns: Morning Cruise: 2:45pm
 Afternoon Cruise: 8:30pm

PRICE:	ADULT	CHILD 5-15 YEARS
Standard Seat	\$90	\$48
Premium Seat	\$115	\$63
Gold Pass	\$138	N/A

Family prices also available.
 Cruise does not operate 15 Jul – 15 Aug 11.

WORLD HERITAGE CRUISES WORSRN

Gordon River Cruise



Cruise across Macquarie Harbour and admire the mirrored reflections of the Gordon River before stepping ashore at Heritage Landing. Walk into ancient rainforest and see 2,000 year old trees. Visit Hells Gate where the harbour opens to the ocean and notorious Sarah Island. On Sarah Island walk among the ruins and hear astonishing stories of when convicts built ships from precious Huon pine.

INCLUDES:

- Scenic cruise
- Professional crew
- Tea and coffee
- Lunch
- Expert guide and commentary
- Premier Upper Deck also includes morning and afternoon tea, soft drinks, Tasmanian beers and wines, cheese platter and chocolates

Departs: Daily from Strahan at 8:30am

Returns: 2pm

PRICE:	ADULT	CHILD 4-14 YEARS
Atrium Seat	\$95	\$40
Window Recliner Seat	\$120	\$70
Premier Upper Deck	\$210	\$210

Other prices apply 1 May – 30 Sep 11. Family prices also available.
 Cruise does not operate 16 – 21 Aug 11.

GORDON RIVER CRUISE GORSRN

The Bonnet Island Experience



Depart Strahan Village and head out to Bonnet Island by way of cruiser on a half hour journey. On the island there is a full interpretive experience giving you the opportunity to learn the history of the lighthouse keepers and their families.

Bonnet Island is home to Little Penguins, Short-tailed Shearwaters and Fairy Prions. Get the rare chance to see the penguins at dusk, and then view them through web cameras placed inside the burrows.

INCLUDES:

- Half hour cruise from Strahan Village to Bonnet Island
- Canapés and drinks
- Warm jacket

Departs: Daily from Strahan Waterfront at Dusk

Duration: 2½ hours

PRICE:	
Adult	\$85
Child 4-14 years	\$40

THE BONNET ISLAND EXPERIENCE BONSRN

Piners and Miners



Take your seat aboard the Land Rover Hi-Rail and journey on the West Coast Wilderness Railway. From Lynchford, the Hi-Rail retracts its rail wheels and your vehicle then transforms into a 4WD for the spectacular drive to the Bird River Track taking in views of Frenchmans Cap and Lake Burbury from the Mt Jukes Road, then descending to follow Kelly Basin and Bird Rivers Roads to the start of the abandoned Bird River Railway.

Enjoy a picnic lunch and then take on one of the many activities including Heritage walks, nature study and wildlife observations before returning to Strahan on the cruise boat Second Nature.

INCLUDES:

- Lunch
- Breakfast pack
- Morning and afternoon tea

Departs: Daily from Strahan Village at 7:15am

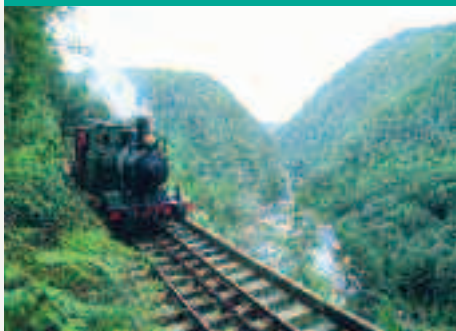
Returns: 5:30pm

PRICE:	1 APR – 30 SEP 11	1 OCT 11 – 31 MAR 12
Adult	\$365	\$380
Child 10-14 years	\$365	\$380

Tour is available to Strahan Village guests only.
 Not suitable for children under 10 years.

PINERS AND MINERS STRSRN

West Coast Wilderness Railway



Travel through one of the world's last pristine wilderness areas crossing 40 bridges, wild rivers and climb over 200 metres on a fascinating 35 kilometre journey from Strahan to Queenstown. Carriages are designed with comfortable seating and extensive windows to capture the spectacular views.

INCLUDES:

- Lunch (morning departures)
- Afternoon tea (afternoon departures)
- One way rail travel (return by coach)
- Premier Class also includes tea, coffee, soft drinks, Tasmanian beers and wine, cheese platter, chocolates and guide book

Departs: Daily from Regatta Point Station, Strahan at 10:15am. Departures also available from Queenstown.

Returns: 4pm

PRICE:	1 OCT 10 – 30 APR 11, 1 OCT 11 – 31 MAR 12	
	ADULT	CHILD 4-14 YEARS
Tourist Class	\$129	\$73
Premier Class	\$210	\$210

Other prices apply 1 May – 30 Sep 11. Family prices also available.

WEST COAST WILDERNESS RAILWAY WESUEE

Devils@Cradle



Devils@Cradle is a Tasmanian devil conservation sanctuary, 500 metres from the entrance to the World Heritage area of the spectacular Cradle Mountain National Park. Wander through the sanctuary at your leisure and see the animals' daylight habits before joining a guided tour with one of the Keepers.

Open: 10am – 3pm (except Christmas day)
 Keeper tours operate daily on the hour.

AFTER DARK FEEDING TOUR

Visit the sanctuary after dark and join the feeding tour. Experience a rare and close up viewing of Tasmanian devils feeding together, quite a spectacular sight.

Departs: Daily from reception at 5:30pm and 8:30pm (Oct – Mar)

Returns: 7pm and 10pm

PRICE:	ENTRY AND KEEPER TOUR	AFTER DARK FEEDING TOUR
Adult	\$15	\$25
Child 5-16 years	\$10	\$13

Family prices also available.

DEVILS@CRADLE DACMNR