



Kelvedon Beach

## Our Favourites

Explore the granite peaks and coastlines of Freycinet National Park

Watch a colony of penguins at Diamond Island

Picnic on Wineglass Bay beach – voted one of the world’s best

Walk the glistening white sands of the Bay of Fires

Take a full day cruise to Wineglass Bay

Household names abound along Tasmania’s East Coast. St Helens, Bay of Fires, Bicheno, Swansea, Freycinet National Park and Wine Glass Bay – they’re all here for your enjoyment, and they’re all equally spectacular to visit.

Freycinet National Park is a bird-watcher’s paradise. Look skyward for whitebellied sea eagles and yellow-tailed black cockatoos. At the Freycinet Peninsula, see the peaks of the Hazards, crystal clear water and white sand. It’s postcard-perfect scenery. Nearby, a Wineglass Bay cruise is a great way to experience this natural wonder, or hike up Mt Amos for a supreme bird’s-eye view of this paradise.

St Helens has a reputation for being a holiday town, which means there’s plenty to keep you occupied. Cafés, restaurants, boutiques and of course a huge range of accommodation.

Fishing port Bicheno is an angler’s dream, and divers reckon it’s pretty special too. This pristine underwater environment spurs kelp forests and abundant fish life. Add some great bistros, cafés and taverns to the mix and you’ve got just the spot for a water-loving holiday.

Swansea is as pretty as its name sounds. In this coastal haven you’ll see sandstone buildings built by convicts, some of which now serve as accommodation for visitors.

Seasoned travellers who think they’ve seen it all quickly change their tune when it comes to the Bay of Fires. Voted by Lonely Planet as the “world’s hottest destination” for 2009, this 30km stretch along the northeast coast is just the ticket to the holiday of a lifetime.



Bay of Fires



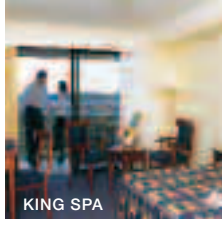
### FIND YOUR ACCOMMODATION

REF.	APARTMENTS	PAGE
3	Amos House and Swansea Ocean Villas ◆◆◆◆	40
2	Diamond Island Resort ★★★★★	40
3	Swansea Beach Chalets ◆◆◆◆	41
3	Swansea Cottages ◆◆◆◆	41

REF.	HOTELS	PAGE
2	Beachfront at Bicheno ★★★☆	40
4	Freycinet Lodge ★★★★★	43
3	Piermont ◆◆◆◆◆	41
4	Saffire Freycinet ◆◆◆◆◆	42
3	Schouten House ◆◆◆◆	41
1	Tidal Waters Resort ★★★★★	40

## Tidal Waters Resort, St Helens ★★★★★



Surrounded by scenic gardens and boasting a perfect waterfront setting. Just 15 minutes drive from the Bay of Fires and beautiful Binalong Bay.

Town Centre 500m  
Map page 39 Ref. 1

1 Quail Street, St Helens

### PROPERTY FEATURES:

- Restaurants (2)
- Room service (limited)
- Pool
- Guest laundry
- Parking
- Non smoking

### ACCOMMODATION FEATURES:

- Air-conditioning
- Mini bar
- Tea/coffee making facilities
- Spa bath (King Spa)
- CD/DVD player
- Ironing facilities
- Internet access (wireless)
- Hair dryer
- Bathrobes (King Spa)

Room serviced daily



From **\$165** PER ROOM PER NIGHT\*

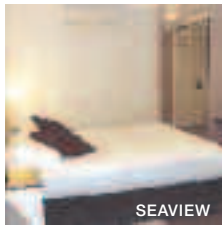
Period	ADULTS	1 NT	3 NTS	5 NTS
1 OCT – 20 DEC 10 Room with Ensuite King Spa	1 to 2	180	540	900
	1 to 2	220	660	1100
1 MAY – 30 SEP 11 Room with Ensuite King Spa	1 to 2	165	495	825
	1 to 2	205	615	1025
21 DEC 10 – 30 APR, 21 DEC 11 – 31 MAR 12 Room with Ensuite King Spa	1 to 2	230	690	1150
	1 to 2	280	840	1400
1 OCT – 20 DEC 11 Room with Ensuite King Spa	1 to 2	190	570	950
	1 to 2	220	660	1100

**Children** 0 to 2 years – cot free of charge.  
3 to 14 years – adult prices apply.

**Max capacity** Room with Ensuite – 4, King Spa – 2.

TIDTES

## Beachfront at Bicheno ★★★☆



Beachfront at Bicheno has breathtaking views of Waubes Bay and is close to Bicheno township, beaches, diving and penguin tours.

Beach 500m  
Town Centre 500m  
Map page 39 Ref. 2

232 Tasman Highway, Bicheno

### PROPERTY FEATURES:

- Restaurants (2)
- Room service (limited)
- Tavern
- Gaming facilities
- Pool (heated)
- Children's playground
- Barbecue
- Guest laundry

### ACCOMMODATION FEATURES:

- Heating
- Tea/coffee making facilities
- Cable TV
- Electric blankets

Room serviced daily

From **\$120** PER ROOM PER NIGHT\*

Period	ADULTS	1 NT	3 NTS	5 NTS
1 OCT 10 – 31 MAR 11 Courtyard	1 to 2	135	405	675
	1 to 2	140	420	700
	1 to 2	160	480	800
1 APR – 31 MAY, 1 SEP 11 – 31 MAR 12 Poolside	1 to 2	160	480	800
	1 to 2	180	540	900
1 JUN – 31 AUG 11 <sup>^</sup> Poolside	1 to 2	120	360	600
	1 to 2	145	435	725

**Children** 0 to 5 years – cot free of charge.  
6 to 12 years – \$20 per child per night.

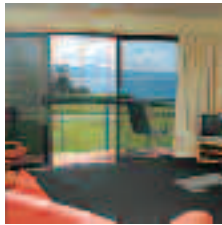
**Max capacity** Courtyard/Poolside – 2 adults/1 child, Seaview – 2.

BWBTES

### TRAVELPOINT BONUS

<sup>^</sup> FREE light breakfast daily.

## Diamond Island Resort, Bicheno ★★★★★



These contemporary apartments offer uninterrupted views of the coast, with the wonders of two national parks close by.

Town Centre 2.5km  
Map page 39 Ref. 2

69 Tasman Highway, Bicheno

### PROPERTY FEATURES:

- Restaurant
- Bar
- Room service (limited)
- Pool
- Barbecue area
- Tennis court
- Parking

### ACCOMMODATION FEATURES:

- Heating
- Kitchen with microwave
- In-room movies (pay to view)
- Cable TV
- Hair dryer

Apartment serviced every 3 days



From **\$220** PER ROOM PER NIGHT\*

Period	ADULTS	1 NT	3 NTS	5 NTS
1 OCT 10 – 31 MAR 11 1 Bedroom	1 to 2	220	660	1100
	4	290	870	1450
	1 to 2	350	1050	1750
1 APR 11 – 31 MAR 12 1 Bedroom	1 to 2	250	750	1250
	1 to 2	300	900	1500
	4	330	990	1650

2 night minimum stay applies 20 Dec 10 – 31 Jan 11, 22 – 26 Apr, 20 Dec 11 – 31 Jan 12. Other room types also available.

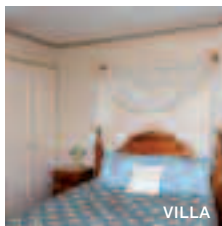
**Includes** Light breakfast daily.

**Children** 0 to 2 years – cot free of charge.  
3 to 14 years – adult prices apply.

**Max capacity** 1 Bedroom/1 Bedroom Premium – 3,  
1 Bedroom Executive – 2, 2 Bedroom – 5.

DIATES

## Amos House & Swansea Ocean Villas ◆◆◆◆



Offers both hotel and self-contained villa accommodation only minutes from the centre of Swansea township.

Town Centre 30m  
Map page 39 Ref. 2

3 Maria Street, Swansea

### PROPERTY FEATURES:

- Restaurant
- Café
- Bar
- Guest lounge
- Fireplace
- Guest laundry
- Parking
- Non smoking

### ACCOMMODATION FEATURES:

- Ocean views
- Balcony
- Fireplace (Villas)
- Kitchen with microwave (Villas)
- Tea and coffee making facilities
- Washer/dryer (Villas)
- Ironing facilities
- Hair dryer
- All rooms non smoking

Motel serviced daily

Villa serviced every 3 days

From **\$85** PER ROOM PER NIGHT\*

Period	ADULTS	1 NT	3 NTS	5 NTS
1 OCT – 30 NOV 10, 1 SEP – 30 NOV 11 Motel	1 to 2	100	300	500
	1 to 2	145	435	725
1 DEC 10 – 31 JAN 11, 1 DEC 11 – 31 JAN 12 Motel	1 to 2	125	375	625
	1 to 2	190	570	950
1 FEB – 30 APR 11, 1 FEB – 31 MAR 12 Motel	1 to 2	110	330	550
	1 to 2	155	465	775
1 MAY – 31 AUG 11 Motel	1 to 2	85	255	425
	1 to 2	120	360	600

**Children** 0 to 2 years – cot/bed charge payable direct.  
3 to 14 years – adult prices apply.

**Max capacity** Motel – 2, Villa – 4.

AMOSWZ

Schouten House, Swansea ◆◆◆◆



A landmark Heritage Listed property c1844. Indulge in culinary treats and soak up the history of this grand Georgian home.

Beach 60m  
Town Centre 1km  
Map page 39 Ref. 3

1 Waterloo Road, Swansea

PROPERTY FEATURES:

- Room service (limited)
- Guest lounge ▪ Fireplace
- Laundry service
- DVD player ▪ Parking

ACCOMMODATION FEATURES:

- Fan
- Heating
- Electric blankets
- Tea/coffee making facilities
- Mini bar
- Ironing facilities
- Hair dryer
- All rooms non smoking

Room serviced on request

From \$160 PER ROOM PER NIGHT\*

1 OCT – 30 NOV 10, 21 APR – 30 NOV 11	ADULTS	1 NT	3 NTS	5 NTS
Antique Queen Room/ Four Poster Room	2	160	480	800
Family Room	2	170	510	850
1 DEC 10 – 20 APR 11, 1 DEC 11 – 31 MAR 12	ADULTS	1 NT	3 NTS	5 NTS
Antique Queen Room/ Four Poster Room	2	186	540	900
Family Room	2	190	570	950

Sole use prices also available. 2 night minimum stay applies 22 Dec 10 – 26 Jan 11, 22 – 25 Apr 11, 22 Dec 11 – 26 Jan 12.

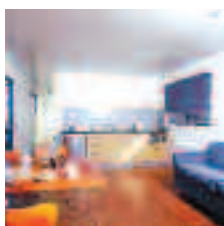
**Includes** Full breakfast daily.

**Children** 0 to 2 years – cot/bed charge payable direct.  
3 to 14 years – adult prices apply.

**Max capacity** Antique Queen Room/Four Poster Room – 2,  
Family Room – 3.

SCHSWZ

Swansea Beach Chalets ◆◆◆◆



Located in the historic township of Swansea, enjoy spectacular views of Freycinet National Park over Great Oyster Bay.

Beachfront  
Town Centre 500m  
Map page 39 Ref. 3

Shaw Street, Swansea

PROPERTY FEATURES:

- Pool ▪ Barbecue area
- Games room
- Children's playground
- Guest laundry
- Parking ▪ Non smoking

ACCOMMODATION FEATURES:

- Deck (ocean view) ▪ Fan
- Limited cooking facilities
- Video player
- CD/DVD player
- Spa bath (some 2 Bedrooms)
- Ironing facilities
- Hair dryer

Room serviced daily

From \$180 PER ROOM PER NIGHT\*

1 OCT 10 – 31 MAR 12	ADULTS	1 NT	3 NTS	5 NTS
Studio	1 to 2	180	540	900
2 Bedroom Chalet	1 to 4	220	660	1100
2 Bedroom Waterview Chalet	1 to 4	240	720	1200

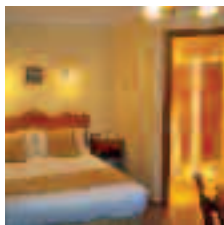
2 night minimum stay applies 25 Dec 10 – 26 Jan 11.

**Children** 0 to 2 years – cot free of charge.  
3 to 14 years – adult prices apply.

**Max capacity** Studio – 2, 2 Bedroom Chalet/  
2 Bedroom Waterview Chalet – 4.

SBCSWZ

Swansea Cottages ◆◆◆◆



Swansea Cottages offers a choice of suite or cottage style accommodation adjacent to Great Oyster Bay and the beach.

Beach 50m  
Town Centre 250m  
Map page 39 Ref. 3

43 Franklin Street, Swansea

PROPERTY FEATURES:

- Barbecue area
- Guest laundry
- Parking

ACCOMMODATION FEATURES:

- Air-conditioning
- Balcony (Cottages)
- Tea/coffee making facilities
- Kitchen (Cottages)
- Limited cooking facilities (Suites)
- CD/DVD player
- Washer/dryer (Cottages)
- Ironing facilities

Suites serviced daily  
Cottages serviced weekly

From \$160 PER ROOM PER NIGHT\*

1 OCT – 23 DEC 10, 11 JAN – 21 APR, 26 – 30 APR, 1 SEP – 22 DEC 11, 11 JAN – 31 MAR 12	ADULTS	1 NT	2 NTS	3 NTS
Double Suite	1 to 2	200	380	540
Family Suite	1 to 3	240	440	630
2 Bedroom Cottage	1 to 2	240	440	660
3 Bedroom Spa Cottage	1 to 2	270	500	750
1 MAY – 30 AUG 11	ADULTS	1 NT	2 NTS	3 NTS
Double Suite	1 to 2	180	340	480
Family Suite	1 to 3	220	400	570
2 Bedroom Cottage	1 to 2	200	360	540
3 Bedroom Spa Cottage	1 to 2	230	420	600

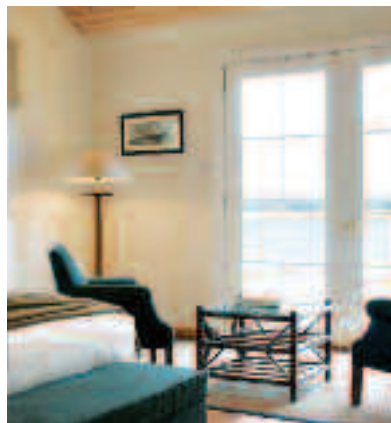
Other prices apply 24 Dec 10 – 10 Jan 11, 22 – 25 Apr, 23 Dec 11 – 10 Jan 12. Spa Suite prices also available.

**Children** 0 to 2 years – cot/bed charge payable direct.  
3 to 14 years – adult prices apply.

**Max capacity** Double Suite – 2, Family Suite – 4,  
2 Bedroom Cottage – 6,  
3 Bedroom Spa Cottage – 7.

SWCTES

Piermont, Swansea ◆◆◆◆◇



Located on 93 hectares of serene beach frontage on Great Oyster Bay overlooking Freycinet National Park.

Beachfront  
Town Centre 2km  
Map page 39 Ref. 3

12990 Tasman Highway, Swansea

PROPERTY FEATURES:

- Barbecue area
- Bicycle hire
- Guest laundry
- Internet access (wireless)
- Restaurant ▪ Tennis court ▪ Pool

ACCOMMODATION FEATURES:

- Limited cooking facilities
- CD/DVD player
- Spa bath
- Ironing facilities ▪ Fireplace
- Washer/dryer ▪ Hair dryer
- All rooms non smoking

Room serviced daily

From \$225 PER ROOM PER NIGHT\*

8 DEC 10 – 31 MAR 11, 8 DEC 11 – 31 MAR 12	ADULTS	1 NT	3 NTS	5 NTS
Studio Spa Cottage	1 to 2	265	795	1325
Beachfront Spa Cottage	1 to 2	295	885	1475
1 MAY – 31 AUG 11	ADULTS	1 NT	3 NTS	5 NTS
Studio Spa Cottage	1 to 2	225	675	1125
Beachfront Spa Cottage	1 to 2	255	765	1275
1 SEP – 7 DEC 11	ADULTS	1 NT	3 NTS	5 NTS
Studio Spa Cottage	1 to 2	235	705	1175
Beachfront Spa Cottage	1 to 2	265	795	1325

Other prices apply 1 Oct – 7 Dec 10, 1 – 30 Apr 11. 3 night minimum stay applies 24 Dec 10 – 9 Jan 11. 2 night minimum stay applies 10 – 31 Jan 11. Other room types also available.

**Children** 0 to 2 years – cot free of charge.  
3 to 14 years – adult prices apply.

**Max capacity** 2.

PIETES

## Saffire Freycinet, Coles Bay ◆◆◆◆

From **\$1550** PER ROOM PER NIGHT\*



### Coles Bay Road, Coles Bay

Saffire is an inspirational coastal sanctuary that delivers sophisticated luxury built at the entrance to Coles Bay, overlooking the Hazards and the crystal clear waters of Great Oyster Bay.

Discreetly positioned within the serene and pristine Freycinet Peninsula, Saffire is the jewel of Tasmania, connecting mankind and Mother Nature with breathtaking style.

Only two hours from Hobart, Saffire Freycinet is unique, indulgent and enriching. Designed for a select few, a maximum of just 40 guests are accommodated in 20 luxurious suites with magnificent ocean views. Included in the main building is the restaurant, outdoor courtyard, day spa with steam and massage room and meeting facilities. This new east coast experience is a celebration of the art of service, wellbeing, masterful culinary delights, ancient landscape and wildlife in abundance.

Individual daily itineraries can lead to remote island adventures and the famed Wineglass Bay, enjoy hiking, sport fishing, wild harvest foraging, bird watching, quad biking. Indulge with an afternoon of pampering at the health and day spa followed by a glass of pinot on a private suite deck against a spectacular backdrop of the Hazards mountains and a wilderness of stars.

### PROPERTY FEATURES:

- Day spa
- Restaurant ▪ Bar
- Room service (24 hour)
- Gymnasium
- Kayaks and mountain bikes
- Fireplace ▪ Guest lounge
- Selection of daily guided activities
- 20 individual suites each with private courtyard

### ACCOMMODATION FEATURES:

- Deck
- Internet access (wireless – free)
- CD/DVD player ▪ Mini bar
- iPod music system
- Espresso machine (Premium Suites)
- Plunge pool (Premium Suites)

### Room serviced daily

Coles Bay 2km  
Map page 39 Ref. 4



DELUXE SUITE



PREMIUM SUITE

1 OCT 10 – 31 MAR 11	ADULTS	1 NT	3 NTS	5 NTS
Deluxe Suite	1 to 2	1550	4650	7750
Luxury Suite	1 to 2	1700	5100	8500
Premium Suite	1 to 2	2550	7650	12750
1 APR 11 – 31 MAR 12	ADULTS	1 NT	3 NTS	5 NTS
Deluxe Suite	1 to 2	1750	5250	8750
Luxury Suite	1 to 2	1900	5700	9500
Premium Suite	1 to 2	2750	8250	13750

**Includes** All meals and deluxe dinner beverages daily.  
Selected activities daily.  
Complimentary mini bar.  
One 60 minute welcome day spa treatment per suite in Deluxe Suite or Luxury Suite.  
One 120 minute welcome day spa treatment per suite in Premium Suite.

**Children** 0 to 4 years – free of charge, room only.  
5 to 14 years – adult prices apply.

**Max capacity** 2.

**SAFTES**

## Freycinet Lodge, Freycinet National Park ★★★★★



### Freycinet National Park, Coles Bay

Uniquely set within Freycinet National Park at the foot of the Hazards, Freycinet Lodge is a superb base for exploring the world famous Wineglass Bay and the Freycinet Peninsula.

The environmentally friendly one and two-roomed cabins are sensitively sited in coastal bushland on the shores of Great Oyster Bay. Freycinet Lodge is home to the signature Wineglass to Wine Glass experience.

#### PROPERTY FEATURES:

- Restaurants (2) ▪ Bar ▪ Guest lounge ▪ Library ▪ Gift shop
- Tennis court ▪ Barbecue area ▪ Safety deposit box ▪ Guest laundry
- Internet facilities ▪ Bicycle hire ▪ Parking

#### ACCOMMODATION FEATURES:

- Heating ▪ Fan ▪ Refrigerator ▪ Tea/coffee making facilities ▪ Hair dryer

Room serviced daily

Coles Bay 2.6km  
Map page 39 Ref. 4



		From \$236 PER ROOM PER NIGHT*			
21 DEC 10 – 31 MAR 11		ADULTS	2 NTS	5 NTS	7 NTS
Freycinet Cabin	1 to 2	672	1680	2352	
Oyster Bay Cabin	1 to 2	766	1915	2681	
1 MAY – 20 DEC 11		ADULTS	1 NT	3 NTS	5 NTS
Freycinet Cabin	1 to 2	236	708	1180	
Oyster Bay Cabin	1 to 2	267	801	1335	
16 JAN – 31 MAR 12		ADULTS	2 NTS	5 NTS	7 NTS
Freycinet Cabin	1 to 2	574	1435	2009	
Oyster Bay Cabin	1 to 2	670	1675	2345	

Other prices apply 10 Oct – 20 Dec 10, 1 – 30 Apr, 21 Dec 11 – 15 Jan 12. Wineglass Deluxe Cabin and Wineglass Premier Cabin prices also available.

**Includes** Full breakfast daily.

**Children** 0 to 4 years – cot free of charge.  
5 to 14 years – adult prices apply.

**Max capacity** Freycinet Cabin – 3, Oyster Bay Cabin – 5.

FRETES

### WINEGLASS TO WINE GLASS EXPERIENCE

Take an invigorating walk up to Wineglass Bay lookout and then descend onto Wineglass Bay. From Wineglass Bay you take the track along to Hazards Beach for lunch. After an afternoon of relaxing, a water taxi will collect you for a 30 minute scenic cruise back to Freycinet Lodge.

#### INCLUDES:

- Guided walk to Wineglass Bay and Hazards Beach
- Morning tea and lunch
- Return boat transfer to the Lodge

**Departs:** Wed to Sun at 8am (Nov – May)

**Returns:** 4pm

PRICE PER PERSON	1 OCT 10 – 30 SEP 11	1 OCT 11 – 31 MAR 12
Adult	\$380	\$385
Child prices on application.		

### The Wineglass Bay Cruise



Only 1% of visitors to Freycinet National Park have the rare opportunity to see the stunning Freycinet coastline, which includes world famous Wineglass Bay. Join this fully guided Eco Certified cruise and become one of the privileged few to experience this unique opportunity.

In Wineglass Bay indulge in a freshly shucked oyster, still dripping from the sea and served with a sample of Tasmania's finest sparkling wine and cheese.

#### INCLUDES:

- Expert guide and commentary
- Tasmanian sparkling wine, oysters and cheese
- Binoculars
- Wet weather gear

**Departs:** Daily from Coles Bay at 9am and 10am (Sep – May)

**Returns:** 1pm and 2pm



#### PRICE PER PERSON:

Adult	\$130
Child 4-14 years	\$85

WINEGLASS BAY CRUISES

FSCTES

### The Freycinet Paddle



This relaxed guided sea kayaking tour is the ultimate way to discover the breathtaking coastline of the Freycinet Peninsula. Choose from a morning or twilight tour.

#### INCLUDES:

- 2 hours paddle time
- Experienced guides
- All sea kayaking equipment
- Spray jacket
- Morning or afternoon tea
- Dry bag for personal items

**Departs:** Daily from Coles Bay at 8:30am and twilight (Oct – Apr), 9am and twilight (May – Sep)

**Duration:** 3 hours



#### PRICE PER PERSON: 1 OCT 10 – 30 JUN 11 1 JUL 11 – 31 MAR 12

Adult	\$95	\$110
Child 4-12 years	\$95	\$110

FREYCINET ADVENTURES

FSATES

### Freycinet in a Day



This full day experience combines the very best that Freycinet has to offer in a relaxed day of adventure. Spend the morning exploring the breathtaking coastline of Freycinet National Park by sea kayak. In the afternoon embark on a self-guided walk from Hazards Beach to the world famous Wineglass Bay.

#### INCLUDES:

- Freycinet Paddle morning tour
- Return Aqua Taxi transfers to Hazards Beach
- Lunch voucher for use at the local café
- Morning tea

**Departs:** Daily from Coles Bay at 8:30am (Oct – Mar)

**Returns:** 4pm



#### PRICE PER PERSON: 1 OCT 10 – 31 MAR 11 1 OCT 11 – 31 MAR 12

Adult	\$180	\$200
Child 4-12 years	\$180	\$200

FREYCINET ADVENTURES

FSATES