



Cradle Mountain-Lake St Clair National Park

Our Favourites

Take an early morning kayak on Dove Lake

Cruise across Lake St Clair – the deepest lake in the southern hemisphere

Journey out through Hells Gates on a Gordon River Cruise

Take a ride on the historic West Coast Wilderness Railway

Tasmania's wild west is what everybody talks about, and deservedly so. Here lies some of the most spectacular World Heritage Listed scenery on the planet.

Most famous of all is Dove Lake, where Cradle Mountain's reflection can be seen in the cool still water. This is a landscape of steep gorges, wild rivers and thick damp forests. Hikers can tackle the 65 kilometre Overland Track, which begins in Cradle Mountain.

At the southern end of Cradle Mountain is Lake St Clair, Australia's deepest freshwater lake. Canoe, walk, fish or just enjoy the beauty – the choice is yours.

Queenstown was once the world's richest gold and copper mine, and the ride into town is 90 bends along a spiralling road. Travel to Strahan, your gateway to Sarah Island. If it's convict history you're after, this is where you'll find it at Macquarie Harbour. From here cruise the Gordon River, raft the Franklin, and board the Wilderness Railway steam train.

Drive north to the temperate rainforest of the Tarkine, take the vehicular barge to the town of Corinna, and travel on to Zeehan where the Pioneers Memorial Museum will take you back in time. Once bustling mining towns, Rosebery and Tullah are now quiet havens providing a welcoming break to travellers.

Tarraleah is another standout location. Remember the Hydro Electric scheme? Back in the 1920s and 1930s the town was packed with timber cottages built for hydro workers. Now they serve as a wilderness resort.

FIND YOUR ACCOMMODATION

REF.	APARTMENTS	PAGE
5	The Cottages at Tarraleah ♦♦♦♦◇	35
2	Cradle Mountain Wilderness Village ♦♦♦♦	32
4	Marsden Court ♦♦♦♦	34
4	McIntosh Cottages ♦♦♦♦◇	34
4	Risby Cove ♦♦♦♦	34

REF.	HOTELS	PAGE
2	Cradle Mountain Chateau ★★★★★	32
2	Cradle Mountain Lodge ♦♦♦♦◇	33
4	Franklin Manor ♦♦♦♦◇	33
1	Lemonthyme Lodge ★★★★★	32
4	Motel Strahan ♦♦♦♦	34
4	Strahan Village ♦♦♦♦	35

Other properties available

3	The Tullah Lakeside Lodge ♦♦♦♦	-
---	--------------------------------	---



Strahan

Western Wilderness and Cradle Mountain

Lemonthyme Lodge ★★★★★



Treetop Cabin



Dolcoath Road, Moina

A boutique wilderness resort hideaway, nestled in the heart of the Cradle Mountain Valley.

Escape the city and relax in this resort hideaway situated 65 kilometres south of Devonport and 40 minutes from Cradle Mountain.

Stroll through Weindorfes forest and trek around Dove Lake, there are many nature walks on offer to suit all fitness levels.

PROPERTY FEATURES:

- Restaurant
- Room service (limited)
- Bar
- Massage treatments
- Barbecue area
- Theatre
- Waterfall walks
- Guest laundry
- Parking

ACCOMMODATION FEATURES:

- Balcony
- Gas log fire
- Tea/coffee making facilities
- Mini bar
- Internet access (wireless)
- Spa (Treetop Spa Cabins and Luxury Wilderness Spa Suites)

Room serviced daily

Shop 25km
Devonport 65km
Map page 31 Ref. 1

From **\$190** PER ROOM PER NIGHT*



Treetop Cabin



Luxury Wilderness Spa Suite

1 OCT 11 – 30 APR 12, 1 OCT 12 – 31 MAR 13	ADULTS	1 NT	3 NTS	5 NTS
Treetop Cabin	1 to 2	285	855	1425
Treetop Spa Cabin	1 to 2	315	945	1575
2 Bedroom Cabin	1 to 2	315	945	1575
Luxury Wilderness Spa Suite	1 to 2	395	1185	1975
1 MAY – 30 SEP 12	ADULTS	1 NT	3 NTS	5 NTS
Treetop Cabin	1 to 2	190	570	950
Treetop Spa Cabin	1 to 2	225	675	1125
2 Bedroom Cabin	1 to 2	225	675	1125
Luxury Wilderness Spa Suite	1 to 2	280	840	1400

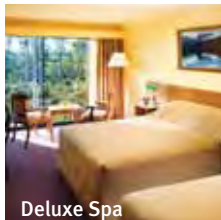
Includes Full breakfast daily.

Children 0 to 2 years – cot free of charge.
3 to 13 years – \$25 per child per night.

Max capacity Treetop Cabin/Treetop Spa Cabin/Luxury Wilderness Spa Suite – 2 adults/1 child,
2 Bedroom Cabin – 5.

LEMCMN

Cradle Mountain Chateau ★★★★★



Deluxe Spa

In a serene alpine woodland setting, the Chateau is the perfect base to explore the ice carved mountain scenery of the Cradle.

Sheffield 60km
Map page 31 Ref. 2

Cradle Mountain Road, Cradle Mountain

PROPERTY FEATURES:

- Restaurants (2) ▪ Bar
- Wilderness Gallery ▪ Day spa
- Gift shop ▪ Library
- Internet facilities
- Billiard table
- Guest laundry ▪ Parking

ACCOMMODATION FEATURES:

- Heating
- Tea/coffee making facilities
- Ironing facilities
- Hair dryer

Room serviced daily



From **\$154** PER ROOM PER NIGHT*

21 – 25 DEC 11, 7 JAN – 5 APR, 11 – 30 APR 12	ADULTS	1 NT	3 NTS	5 NTS
Deluxe	1 to 2	236	708	1180
Deluxe Spa	1 to 2	260	780	1300
1 MAY – 20 DEC 12	ADULTS	1 NT	3 NTS	5 NTS
Deluxe	1 to 2	154	462	770
Deluxe Spa	1 to 2	169	507	845
21 – 25 DEC 12, 7 JAN – 28 MAR 13	ADULTS	1 NT	3 NTS	5 NTS
Deluxe	1 to 2	240	720	1200
Deluxe Spa	1 to 2	264	792	1320

Other prices apply 1 Oct – 20 Dec, 26 Dec 11 – 6 Jan, 6 – 10 Apr, 26 Dec 12 – 6 Jan, 29 – 31 Mar 13. Split Level King Spa Room prices also available.

Children 0 to 3 years – cot free of charge.
4 to 14 years – 1 child free when sharing with an adult and using existing bedding.

Max capacity 4.

CMCCMN

Cradle Mountain Wilderness Village ◆◆◆◆



Nestled in a secluded bush setting in the Cradle Valley, the village offers private cottages surrounded by native plants and wildlife.

Sheffield 60km
Map page 31 Ref. 2

Cradle Mountain Road, Cradle Mountain

PROPERTY FEATURES:

- Honesty bar in guest lounge
- Internet facilities
- Internet access (wireless)
- Guest laundry
- Parking ▪ Non smoking

ACCOMMODATION FEATURES:

- Balcony
- Limited cooking facilities with microwave
- Cable TV
- Ironing facilities
- Hair dryer

Room serviced daily



From **\$180** PER ROOM PER NIGHT*

1 OCT 11 – 31 MAR 12	ADULTS	1 NT	2 NTS	5 NTS
1 Bedroom Cottage	1 to 2	220	440	1100
2 Bedroom Chalet	1 to 4	290	580	1450
Premium Studio Spa Cottage	1 to 2	290	580	1450
1 APR – 30 SEP 12	ADULTS	1 NT	2 NTS	5 NTS
1 Bedroom Cottage	1 to 2	180	360	900
2 Bedroom Chalet	1 to 4	230	460	1150
Premium Studio Spa Cottage	1 to 2	230	460	1150
1 OCT 12 – 31 MAR 13	ADULTS	1 NT	2 NTS	5 NTS
1 Bedroom Cottage	1 to 2	200	400	1000
2 Bedroom Chalet	1 to 4	280	560	1400
Premium Studio Spa Cottage	1 to 2	280	560	1400

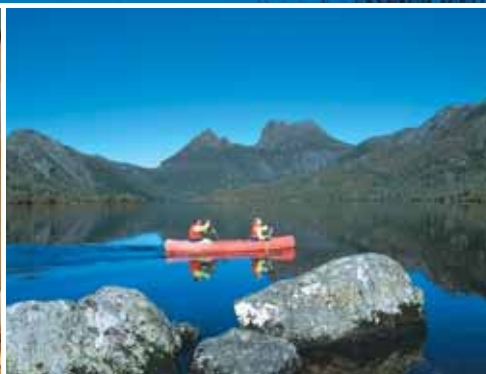
2 night minimum stay applies 25 Dec 11 – 26 Jan, 6 – 9 Apr, 25 Dec 12 – 26 Jan 13. Other room types also available.

Children 0 to 2 years – cot/bed charge payable direct.
3 to 14 years – \$20 per child per night.

Max capacity 1 Bedroom Cottage – 3 adults or 2 adults/
2 children, 2 Bedroom Chalet – 4, Premium Studio Spa Cottage – 2.

CMWCMN

Cradle Mountain Lodge ◆◆◆◆◆



From **\$251** PER ROOM PER NIGHT*



Cradle Mountain Road, Cradle Mountain

Cradle Mountain Lodge is an iconic, unique wilderness experience and is the closest you can be to the entrance of the spectacular World Heritage Listed Cradle Mountain-Lake St.Clair National Park; just two hours drive from Launceston and 1¼ hours from Devonport.

Set discreetly within this wilderness setting, there are 86 private timber cabins, offering four different types of accommodation, from the contemporary Pencil Pine Cabins, to the deluxe King Billy Suites. Each provides every comfort you could need, some with spa baths.

This superb escape showcases the best Tasmania has to offer with warm hospitality, sensational locally produced food and wine, breathtaking scenery and magnificent wilderness surrounds.

Around Cradle Mountain Lodge there are more than 20 walking trails that suit every fitness level. Wander through towering forests with trees older than mankind, discover animal and plant varieties found nowhere else on earth. When it's time to relax and rejuvenate, indulge in a therapeutic massage or sauna at the acclaimed Waldheim Alpine Spa - the perfect place to soak away tension and restore wellbeing.

PROPERTY FEATURES:

- Waldheim Alpine Spa (day spa) ■ Restaurant ■ Bistro
- Bars (2) ■ Guided walks ■ Pool table and darts
- Wine cellar with wine and cheese tastings
- Canoeing ■ Fly fishing (seasonal)
- General store ■ Flora and fauna reference library
- Over 20 walking tracks ■ Guest lounge ■ Guest television
- Internet facilities ■ Guest laundry ■ Parking

ACCOMMODATION FEATURES:

- Gas or wood fire ■ CD player and a selection of CDs
- Tea/coffee making facilities ■ Mini bar
- Ironing facilities ■ Hair dryer

Room serviced daily

Sheffield 60km
Map page 31 Ref. 2



1 OCT 11 – 31 MAR 12	ADULTS	1 NT	3 NTS	5 NTS
Pencil Pine Cabin	1 to 2	320	816	1360
Spa Cabin	1 to 2	396	1011	1685
Spa Suite	1 to 2	484	1236	2060
King Billy Suite	1 to 2	760	1941	3235

1 – 30 APR, 1 OCT 12 – 31 MAR 13	ADULTS	1 NT	3 NTS	5 NTS
Pencil Pine Cabin	1 to 2	320	816	1360
Spa Cabin	1 to 2	396	1011	1685
Spa Suite	1 to 2	484	1236	2060
King Billy Suite	1 to 2	760	1941	3235

1 MAY – 30 SEP 12	ADULTS	1 NT	3 NTS	5 NTS
Pencil Pine Cabin	1 to 2	251	753	1255
Spa Cabin	1 to 2	309	927	1545
Spa Suite	1 to 2	379	1137	1895
King Billy Suite	1 to 2	593	1779	2965

Family Cabin prices also available.

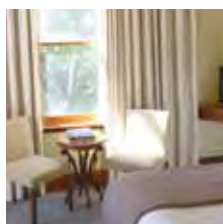
Includes	Full buffet breakfast daily.
Children	0 to 12 years – free when sharing with an adult and using existing bedding. King Billy Suite – 0 to 12 years not catered for.
Max capacity	Pencil Pine Cabin – 4, Spa Cabin/Spa Suite/ King Billy Suite – 3.

CRACMN

SUNLOVER BONUS

FREE breakfast for children 0 to 12 years daily.

Franklin Manor ◆◆◆◆◆



75 Esplanade, Strahan

PROPERTY FEATURES:

- Restaurant ■ Bar
- Fireplace
- Library ■ Internet access (wireless)
- Parking (limited) ■ Non smoking

ACCOMMODATION FEATURES:

- Tea/coffee making facilities
- Mini bar (except Standard Queens)
- CD/DVD player (except Standard Queens)
- Fireplace (Manor Spa Suites)
- Spa bath (Manor Spa Suites)
- Bathrobes (except Standard Queens)
- Hair dryer

Room serviced daily

Where warmth and hospitality blends with contemporary elegance, a unique retreat on the doorstep of the magnificent World Heritage wilderness.

Town Centre 1km
Map page 31 Ref. 4

From **\$155** PER ROOM PER NIGHT*

1 MAY – 31 AUG 12	ADULTS	1 NT	3 NTS	5 NTS
Standard Queen	1 to 2	155	465	775
Manor Suite	1 to 2	185	555	925
Manor Spa Suite [^]	1 to 2	240	720	1200

1 SEP – 30 NOV 12	ADULTS	1 NT	3 NTS	5 NTS
Standard Queen	1 to 2	185	555	925
Manor Suite	1 to 2	210	630	1050
Manor Spa Suite [^]	1 to 2	240	720	1200

1 DEC 12 – 31 MAR 13	ADULTS	1 NT	3 NTS	5 NTS
Standard Queen	1 to 2	199	597	995
Manor Suite	1 to 2	235	705	1175
Manor Spa Suite [^]	1 to 2	240	720	1200

Other prices apply 1 Oct 11 – 30 Apr 12.

Includes	Light breakfast daily.
Children	0 to 2 years – cot free of charge. 3 to 19 years – adult prices apply.
Max capacity	2.

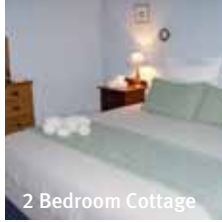
FRASRN

SUNLOVER BONUS

[^]FREE bottle of Tasmanian sparkling wine in your room.

Strahan

McIntosh Cottages, Strahan ◆◆◆◆



2 Bedroom Cottage

Lovely cottages featuring a romantic open wood fire, cozy king size bed, homely service and much more.

Town Centre 500m
Map page 31 Ref. 4

18 Harvey Street, Strahan

PROPERTY FEATURES:

- Room service (limited)
- Fireplace
- Guest lounge
- DVD library
- Guest laundry
- Parking
- Non smoking

ACCOMMODATION FEATURES:

- Kitchen with microwave and dishwasher
- Tea/coffee making facilities
- CD/DVD player
- Laundry
- Ironing facilities
- Hair dryer

Room serviced daily

From **\$80** PER ROOM PER NIGHT*

1 OCT 11 – 20 DEC 11 [^]	ADULTS	1 NT	3 NTS	5 NTS
1 Bedroom Cottage	1 to 2	160	420	560
2 Bedroom Cottage	1 to 2	170	450	600

1 APR – 31 MAY, 1 OCT 12 – 30 NOV 12	ADULTS	1 NT	3 NTS	5 NTS
1 Bedroom Cottage	1 to 2	160	420	700
2 Bedroom Cottage	1 to 2	180	480	800

1 JUN – 30 SEP 12 [^]	ADULTS	1 NT	3 NTS	5 NTS
1 Bedroom Cottage	1 to 2	120	300	400
2 Bedroom Cottage	1 to 2	140	360	480

Other prices apply 21 Dec 11 – 31 Mar 12, 1 Dec 12 – 31 Mar 13.

Children 0 to 2 years – cot free of charge.
3 to 14 years – on application.

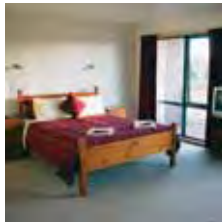
Max capacity 1 Brm Cottage – 3, 2 Brm Cottage – 5.

MCISRN

SUNLOVER BONUS

[^] FREE Night Offer: Stay 5 nights, pay for 4.
(5 night price includes 1 free night)

Marsden Court, Strahan ◆◆◆◆



Marsden Court offers self-catering units set in landscaped gardens and leafy surrounds. Handy location to all of Strahan's attractions.

Town Centre 500m
Map page 31 Ref. 4

Corner Andrew and Gaffney Streets, Strahan

PROPERTY FEATURES:

- Internet facilities
- Guest laundry
- Parking
- Non smoking

ACCOMMODATION FEATURES:

- Air-conditioning
- Limited cooking facilities with microwave
- CD/DVD player (2 Bedrooms)
- Ironing facilities
- Hair dryer

Room serviced daily



From **\$185** PER ROOM PER NIGHT*

1 OCT 11 – 23 DEC 11	ADULTS	1 NT	3 NTS	5 NTS
Studio	1 to 2	195	585	975
2 Bedroom	1 to 4	265	795	1325

24 DEC 11 – 30 APR 12	ADULTS	1 NT	2 NTS	5 NTS
Studio	1 to 2	210	420	1050
2 Bedroom	1 to 4	280	560	1400

1 MAY 12 – 31 AUG 12	ADULTS	1 NT	3 NTS	5 NTS
Studio	1 to 2	185	555	925
2 Bedroom	1 to 4	255	765	1275

24 DEC 12 – 31 MAR 13	ADULTS	1 NT	3 NTS	5 NTS
Studio	1 to 2	215	430	1075
2 Bedroom	1 to 4	285	570	1425

2 night minimum stay applies 24 Dec 11 – 20 Jan, 24 Dec 12 – 20 Jan 13, 29 – 31 Mar 13. Other prices apply 1 Sep – 23 Dec 12.

Children 0 to 2 years – cot/bed charge payable direct.
3 to 14 years – \$25 per child per night.

Max capacity Studio – 3, 2 Bedroom – 6.

MARSRN

Motel Strahan ◆◆◆◆



Motel Strahan is located only minutes from the town centre and features stylish contemporary accommodation.

Town Centre 1km
Map page 31 Ref. 4

3 Andrew Street, Strahan

PROPERTY FEATURES:

- Guest laundry
- Parking

ACCOMMODATION FEATURES:

- Air-conditioning
- Tea/coffee making facilities
- Spa bath (Deluxe rooms)
- Cable TV
- CD/DVD player
- Ironing facilities
- Hair dryer

Room serviced daily

From **\$155** PER ROOM PER NIGHT*

1 OCT 11 – 15 DEC 11, 1 OCT 12 – 15 DEC 12	ADULTS	1 NT	3 NTS	5 NTS
Standard	1 to 2	160	480	800
Deluxe	1 to 2	175	525	875

16 DEC 11 – 15 APR, 16 DEC 12 – 31 MAR 13	ADULTS	1 NT	3 NTS	5 NTS
Standard	1 to 2	175	525	875
Deluxe	1 to 2	190	570	950

16 APR – 30 SEP 12	ADULTS	1 NT	3 NTS	5 NTS
Standard	1 to 2	155	465	775
Deluxe	1 to 2	170	510	850

Children 0 to 2 years – cot free of charge.
3 to 14 years – adult prices apply.

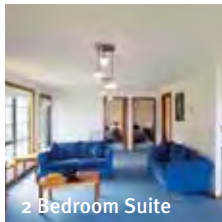
Max capacity 2.

MOTSRN

SUNLOVER BONUS

FREE light breakfast daily for stays of 2 nights or more, valid 16 Apr – 30 Sep 12.

Risby Cove, Strahan ◆◆◆◆



2 Bedroom Suite

Rustic yet contemporary, Risby Cove is a stylish property ideally located on Strahan's beautiful waterfront.

Town Centre 200m
Map page 31 Ref. 4

The Esplanade, Strahan

PROPERTY FEATURES:

- Restaurant
- Bar
- Room service (limited)
- Parking

ACCOMMODATION FEATURES:

- Mini bar
- Limited cooking facilities
- Spa (Spa Suites)
- Hair dryer

Room serviced daily



From **\$170** PER ROOM PER NIGHT*

1 OCT 11 – 30 APR 12, 1 OCT 12 – 31 MAR 13	ADULTS	1 NT	3 NTS	5 NTS
Standard	1 to 2	210	630	1050
Spa Suite/1 Bedroom Suite	1 to 2	240	720	1200
2 Bedroom Suite	1 to 2	256	768	1280

1 MAY – 30 SEP 12	ADULTS	1 NT	3 NTS	5 NTS
Standard	1 to 2	170	510	850
Spa Suite/1 Bedroom Suite	1 to 2	195	585	975
2 Bedroom Suite	1 to 2	215	645	1075

Children 0 to 2 years – cot free of charge.
3 to 14 years – \$30 per child per night.

Max capacity Standard/1 Bedroom Suite – 2, Spa Suite – 3, 2 Bedroom Suite – 4.

RISSRN

Strahan Village ♦♦♦♦



The Esplanade, Strahan

Located on the shores of Macquarie Harbour, Strahan Village offers a wide range of accommodation and dining options to suit all travellers. From beautifully appointed individual cottages and terraces that recall an old-world charm, to stylishly appointed rooms on the waterfront hilltop accommodation that have sweeping views over the water and magnificent sunset views from their private decks.

PROPERTY FEATURES:

- Restaurant ▪ Bar and bistro
- Café ▪ Gift shop
- Lounge area with Cable TV
- Guest laundry ▪ Parking

ACCOMMODATION FEATURES:

- Heating
- Tea/coffee making facilities
- Ironing facilities ▪ Hair dryer

Room serviced daily

Town Centre 30m
Map page 31 Ref. 4

From \$112 PER ROOM PER NIGHT*				
1 OCT 11 – 20 DEC 11	ADULTS	1 NT	3 NTS	5 NTS
Hilltop Standard	1 to 2	112	336	560
Village Garden Terrace	1 to 2	117	351	585
Village Waterfront Terrace	1 to 2	139	417	695
21 – 28 DEC 11, 4 JAN 12 – 20 APR 12, 23 – 30 APR, 21 – 28 DEC 12, 4 JAN 13 – 31 MAR 13	ADULTS	1 NT	3 NTS	5 NTS
Hilltop Standard	1 to 2	176	528	880
Village Garden Terrace	1 to 2	184	552	920
Village Waterfront Terrace	1 to 2	216	648	1080
1 MAY – 20 DEC 12	ADULTS	1 NT	3 NTS	5 NTS
Hilltop Standard	1 to 2	118	354	590
Village Garden Terrace	1 to 2	123	369	615
Village Waterfront Terrace	1 to 2	144	432	720
29 DEC 12 – 3 JAN 13	ADULTS	1 NT	3 NTS	5 NTS
Hilltop Standard	1 to 2	220	660	1100
Village Garden Terrace	1 to 2	230	690	1150
Village Waterfront Terrace	1 to 2	270	810	1350

Other prices apply 29 Dec 11 – 3 Jan, 21 – 22 Apr 12. Other room types also available.

Children 0 to 14 years – free when sharing with an adult and using existing bedding. Cot free of charge.

Max capacity Hilltop Standard – 5, Village Garden Terrace/Village Waterfront Terrace – 2. **STRSRN**

GORDON RIVER PADDLE

The full day signature experience combines a cruise on Lady Jane Franklin II with a sea kayak trip on the Gordon River.

INCLUDES:

- Gordon River Cruise including buffet dinner
- Use of kayak
- Morning and afternoon tea
- Lunch

Departs: Daily at 7:30am (26 Dec – 31 Mar)

Returns: 8:15pm

PRICE PER PERSON:

Adult/Child 10-14 years \$380

GORDON RIVER CRUISES GORSRN

The Cottages at Tarraleah ♦♦♦♦♦



Wild River Road, Tarraleah

90 minutes from Hobart, on the edge of World Heritage wilderness. Enjoy local walks, waterfalls, play golf, go fly-fishing, meet baby animals or visit the spa. Boat trips, national parks, craft and wilderness are all nearby.

These cottages are large, beautifully presented with everything required for a very relaxed stay. Choose comfortable, stylish art-deco or stylish accommodation.

PROPERTY FEATURES:

- Restaurant
- Tavern
- Day spa
- Golf course (9 hole)
- Squash court
- DVD library
- Shop
- Children's playground
- Tours and activities (extra charge)

ACCOMMODATION FEATURES:

- Fireplace
- Air-conditioning/heating
- Art-deco features
- CD/DVD player
- Kitchen with microwave
- Internet access (wireless)
- Laundry

Room serviced daily

Shop on-site
Hobart 125km
Map page 31 Ref. 5



From \$180 PER ROOM PER NIGHT*



1 – 31 OCT 11, 1 MAY – 31 OCT 12	ADULTS	1 NT	3 NTS	5 NTS
Engineers Cottage	1 to 2	180	540	900
Architects Cottage	1 to 2	240	720	1200
Superintendents Cottage	1 to 2	320	960	1600

1 NOV 11 – 30 APR, 1 NOV 12 – 31 MAR 13	ADULTS	1 NT	3 NTS	5 NTS
Engineers Cottage	1 to 2	220	660	1100
Architects Cottage	1 to 2	280	840	1400
Superintendents Cottage	1 to 2	380	1140	1900

Children 0 to 4 years – cot free of charge.
5 to 19 years – adult prices apply.

Max capacity Engineers Cottage/Architects Cottage – 6,
Superintendents Cottage – 8.

TAETAS

Western Wilderness Tours

World Heritage Cruise



A century old family tradition of local hospitality is the foundation of World Heritage Cruises. On board the 35 metre catamaran Eagle, enjoy the natural and historic features of Macquarie Harbour including Hells Gates, a Sarah Island guided tour and Gordon River cruising.

INCLUDES:

- Sarah Island guided tour ■ 2 hour Gordon River cruise
- Heritage Landing guided tour
- Lunch (Morning cruise) ■ Dinner (Afternoon cruise)
- Expert guide and commentary

Departs: From Strahan Wharf
Morning: Daily at 9am
Afternoon: Daily at 3pm (29 Dec – 31 Mar)

Returns: Morning: 2:45pm
Afternoon: 8:30pm



PRICE:	1 OCT 12 – 31 MAR 13	
	ADULT	CHILD 5-15 YEARS
Standard Seat	\$95	\$50
Premium Seat	\$120	\$65
Gold Pass	\$142	N/A

Other prices apply 1 Oct 11 – 30 Sep 12. Family prices also available. Cruise does not operate 15 Jul – 15 Aug 12.

WORLD HERITAGE CRUISES **WORSRN**

Gordon River Cruise



Cruise across Macquarie Harbour and admire the mirrored reflections of the Gordon River before stepping ashore at Heritage Landing. Walk into ancient rainforest and see 2,000 year old trees. Visit Hells Gate where the harbour opens to the ocean and notorious Sarah Island. On Sarah Island hear astonishing stories of when convicts built ships from precious Huon pine.

INCLUDES:

- Scenic cruise ■ Professional crew
- Lunch ■ Expert guide and commentary
- Premier Upper Deck also includes morning and afternoon tea, soft drinks, Tasmanian beers and wines, cheese platter and chocolates

Departs: Daily from Strahan at 8:30am

Returns: 2:15pm



PRICE:	1 OCT 11 – 30 APR 12		1 MAY – 30 SEP 12	
	ADULT	CHILD 4-14 YEARS	ADULT	CHILD 4-14 YEARS
Atrium Seat	\$95	\$50	\$77	\$41
Window Recliner	\$120	\$70	\$98	\$57
Premier Upper Deck	\$210	\$210	\$171	\$171

Other prices apply 1 Oct 12 – 31 Mar 13. Family prices also available. Cruise does not operate 11 – 18 Aug 12.

GORDON RIVER CRUISES **GORSRN**

The Bonnet Island Experience



Depart Strahan Village and head out to Bonnet Island by way of cruiser on a 30 minute journey. On the island there is a full interpretive experience giving you the opportunity to learn the history of the lighthouse keepers and their families.

Bonnet Island is home to Little penguins, Short-tailed Shearwaters and Fairy Prions. Get the rare chance to see the penguins at dusk, and then view them through web cameras placed inside the burrows.

INCLUDES:

- 30 minute cruise from Strahan Village to Bonnet Island
- Canapés and drinks
- Expert guide and commentary

Departs: Daily from Strahan Waterfront at dusk (except Oct)

Duration: 2 hours 30 minutes



PRICE:	1 NOV 11 – 30 SEP 12		1 NOV 12 – 31 MAR 13	
	ADULT	CHILD 5-14 years	ADULT	CHILD 5-14 years
Adult	\$85	\$40	\$93	\$42
Family 2 adults and 2 children	\$200	\$227		

THE BONNET ISLAND EXPERIENCE **BONSRN**

Piners and Miners



Take your seat aboard the Land Rover Hi-Rail and journey on the West Coast Wilderness Railway. From Lynchford, the Hi-Rail retracts its rail wheels and your vehicle then transforms into a 4WD for the spectacular drive to the Bird River Track taking in views of Frenchmans Cap and Lake Burbury from the Mt Jukes Road, then descending to follow Kelly Basin and Bird Rivers Roads to the start of the abandoned Bird River Railway.

Enjoy a picnic lunch and then take on one of the many activities including Heritage walks, nature study and wildlife observations before returning to Strahan on the cruise boat Second Nature.

INCLUDES:

- Lunch ■ Breakfast pack ■ Morning and afternoon tea

Departs: Daily from Strahan Village at 7:15am

Returns: 5:30pm

PRICE:	
Adult	\$380
Child 10-14 years	\$380

Tour is available to Strahan Village guests only. Not suitable for children under 10 years.

PINERS AND MINERS **STRSRN**

West Coast Wilderness Railway



Travel through one of the world's last pristine wilderness areas crossing 40 bridges, wild rivers and climb over 200 metres on a fascinating 35 kilometre journey from Strahan to Queenstown. Carriages are designed with comfortable seating and extensive windows to capture the spectacular views.

INCLUDES:

- One way rail travel (return by coach)
- Lunch (morning departures)
- Afternoon tea (afternoon departures)
- Premier Class also includes tea, coffee, soft drinks, Tasmanian beers and wine, cheese platter, chocolates and guide book

Departs: Daily from Regatta Point Station, Strahan at 10:15am. Departures also available from Queenstown.

Returns: 4pm



PRICE:	1 OCT 12 – 31 MAR 13	
	ADULT	CHILD 4-14 YEARS
Tourist Class	\$133	\$42
Premier Class	\$217	\$217

Other prices apply 1 Oct 11 – 30 Sep 12. Family prices also available.

WEST COAST WILDERNESS RAILWAY **WESUEE**

Devils@Cradle



Devils@Cradle is a Tasmanian Devil conservation sanctuary, 500 metres from the entrance to the World Heritage area of the spectacular Cradle Mountain National Park. Wander through the sanctuary at your leisure and see the animals' daylight habits before joining a guided tour with one of the Keepers.

Open: 10am – 3pm daily except Christmas Day
Keeper tours operate on the hour.

AFTER DARK FEEDING TOUR

Visit the sanctuary after dark and join the feeding tour. Experience a rare and close up viewing of Tasmanian Devils feeding together, quite a spectacular sight.

Departs: Daily from reception at 5:30pm, 8:30pm (Oct – Mar)

Returns: 7pm, 10pm



PRICE:	1 APR 12 – 31 MAR 13	
	ENTRY AND KEEPER TOUR	AFTER DARK FEEDING TOUR
Adult	\$16	\$28
Child 5-16 years	\$10	\$15
Family 2 adults and 2 children	\$45	\$73

Other prices apply 1 Oct 11 – 31 Mar 12.

DEVILS@CRADLE **DACCMN**