



The Nut, Stanley

Our Favourites

Ride the 110 metre Tarkine Slide to the bottom of the forest floor

Experience the talent of the locals at the Makers Workshop in Burnie

Visit the quaint fishing village of Stanley and climb The Nut

Wander past the colourful murals at Sheffield

Sample fine chocolate at House of Anvers in Latrobe

It's another world along the north west coast, and one worth a visit. There's a kind of tranquillity here that's unique to the region; arts and craft artisans really shine, and the red earth produces wonderful things to eat and drink.

From handcrafted paper, fine furniture and jewellery to lovingly made cheese and freshly picked raspberries, the north west coast is a treasure trail of wonderful things.

Rich farmland is as beautiful as it is bountiful, so take your time to travel along Bass Strait from Devonport to Penguin, Burnie and Wynyard, through to coastal Stanley and Marrawah.

Stanley presents a challenge for visitors and it's called The Nut. This sheer sided bluff is the remains of an ancient volcanic plug, and it's regarded by many as a giant plaything that's just begging to be climbed. For a more serene experience, take the chairlift, or walk the track to the summit where you'll see views across Bass Strait beaches and the town.

Inland is Deloraine, and just like Stanley, it's home to some truly inspirational craftspeople. You'll find them in their studios painting and making jewellery. Call in for a chat, they'd love to meet you.

See millions of years of magic in the Tarkine. Northern access to the Tarkine and its magnificent sinkhole is via Tarkine Forest Adventures. Four pathways are offered through this area, bringing you close to the sinkhole and its mysteries. There's also a 110 metre Tarkine Slide that delivers you to the forest floor in spectacular fashion!

FIND YOUR ACCOMMODATION

REF.	APARTMENTS	PAGE
3	Abbey's Cottages ★★★★★	39
3	Horizon Deluxe Apartments ◆◆◆◆◇	39
REF.	HOTELS	PAGE
1	Edgewater ★★★☆	38
1	Quality Hotel Gateway ★★★★★	38
3	Stanley Seaview Inn ★★★☆	39
4	Tall Timbers ◆◆◆◆	40
2	The Waterfront Wynyard ★★★☆	38



Devonport and Wynyard

Edgewater, Devonport ★★★☆



Courtyard

4 Thomas Street, Devonport

Edgewater enjoys a unique location on the banks of the Mersey River near its entrance to Bass Strait. The Spirit of Tasmania vessel glides gently into the river and berths adjacent to Edgewater, making it the ideal location to stay either before departure or on arrival in Devonport.

A range of comfortable air-conditioned courtyard units offer excellent value for money, meanwhile waterfront units enjoy a frontage to the Mersey River. Additionally, first floor terrace style motel rooms offer even more spacious accommodation, whilst executive suites offer the additional enjoyment of a spa.

All rooms are air-conditioned and are tastefully decorated. During your stay, you'll enjoy views across the Mersey River to the city of Devonport.

PROPERTY FEATURES:

- Restaurant
- Bar
- Gaming facilities
- Guest laundry
- Parking

ACCOMMODATION FEATURES:

- Air-conditioning
- Tea/coffee making facilities
- Mini bar (Terraces, Executive Spas)
- Internet access (wireless)
- Cable TV
- Hair dryer (except Courtyard)

Room serviced daily

Town Centre 3km
Map page 37 Ref. 1



From **\$91** PER ROOM PER NIGHT*



Terrace

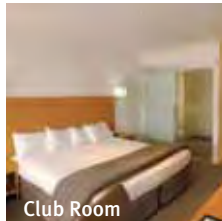
1 OCT 11 – 31 MAR 12	ADULTS	1 NT	3 NTS	5 NTS
Courtyard	1 to 2	91	273	455
Waterfront	1 to 2	125	375	625
Terrace	1 to 2	160	480	800
Executive Spa	1 to 2	240	720	1200
1 – 30 APR 12	ADULTS	1 NT	3 NTS	5 NTS
Courtyard	1 to 2	130	390	650
Waterfront	1 to 2	155	465	775
Terrace	1 to 2	165	495	825
Executive Spa	1 to 2	180	540	900
1 MAY – 24 DEC 12	ADULTS	1 NT	3 NTS	5 NTS
Courtyard	1 to 2	110	330	550
Waterfront	1 to 2	125	375	625
Terrace	1 to 2	135	405	675
Executive Spa	1 to 2	150	450	750
25 DEC 12 – 31 JAN 13	ADULTS	1 NT	3 NTS	5 NTS
Courtyard	1 to 2	125	375	625
Waterfront	1 to 2	135	405	675
Terrace	1 to 2	145	435	725
Executive Spa	1 to 2	160	480	800
1 FEB – 31 MAR 13	ADULTS	1 NT	3 NTS	5 NTS
Courtyard	1 to 2	135	405	675
Waterfront	1 to 2	160	480	800
Terrace	1 to 2	170	510	850
Executive Spa	1 to 2	185	555	925

Children 0 to 2 years – cot/bed charge payable direct.
3 to 14 years – adult prices apply.

Max capacity Courtyard/Terrace/Executive Spa – 2,
Waterfront – 3.

EDGDPO

Quality Hotel Gateway, Devonport ★★★☆



Club Room

Located in the heart of the city with easy access to the 'Cradle Region'. An ideal base for those looking for an activity holiday.

Town Centre 100m
Map page 37 Ref. 1

16 Fenton Street, Devonport

PROPERTY FEATURES:

- 24 hour reception
- Restaurant ■ Bar
- Room service (limited) ■ Parking

ACCOMMODATION FEATURES:

- Air-conditioning (Spa Deluxes)
- Tea/coffee making facilities
- Internet access (wireless)
- In-room movies (free)
- Spa (Spa Deluxes)
- Ironing facilities
- Hair dryer

Room serviced daily



From **\$143** PER ROOM PER NIGHT*

1 OCT 11 – 31 MAR 12	ADULTS	1 NT	2 NTS	5 NTS
Standard	1 to 2	143	286	715
Club Room^	1 to 2	168	336	840
Spa Deluxe	1 to 2	224	448	1120
1 APR 12 – 31 MAR 13	ADULTS	1 NT	3 NTS	5 NTS
Standard	1 to 2	147	441	735
Club Room^	1 to 2	180	540	900
Spa Deluxe	1 to 2	231	693	1155

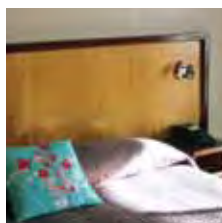
Includes ^ Light breakfast daily.

Children 0 to 12 years – free when sharing with an adult and using existing bedding, room only.

Max capacity 2.

QGHDPPO

The Waterfront Wynyard ★★★☆



Offering absolute riverfront accommodation nestled on the banks of the Inglis River, with spectacular views to the golf course, the wharf or out to open sea.

Town Centre 1km
Map page 37 Ref. 2

1 Goldie Street, Wynyard

PROPERTY FEATURES:

- Bar ■ Room service ■ Barbecue
- Guest lounge ■ Fireplace
- Bicycle/kayak hire ■ DVD library
- Internet facilities ■ Guest laundry
- Parking ■ Non smoking

ACCOMMODATION FEATURES:

- Ocean views ■ Fan ■ Cable TV
- Electric blankets (Standards)
- Tea/coffee making facilities
- Microwave ■ Mini bar ■ Hair dryer
- Internet access (broadband)
- Sony PlayStation ■ Ironing facilities

Room serviced daily

From **\$130** PER ROOM PER NIGHT*

1 OCT 11 – 31 MAR 12	ADULTS	1 NT	2 NTS	5 NTS
Standard	2	145	260	650
Deluxe	2	160	290	725
1 APR 12 – 31 MAR 13	ADULTS	1 NT	2 NTS	5 NTS
Standard	2	155	290	725
Deluxe	2	165	310	775

Sole use prices also available.

Children 0 to 5 years – free when sharing with an adult and using existing bedding.
6 to 12 years – \$20 per child per night.

Max capacity Standard – 3, Deluxe – 2.

WATTAS

Stanley Seaview Inn ★★☆☆



58 Dovecote Road, Stanley

Stanley Seaview Inn is located in Stanley, on Tasmania's spectacular North West Coast.

This acclaimed property is situated on a hill with spectacular coastal views over the town, The Stanley Nut, surrounding beaches and Rocky Cape National Park.

The Nut View Restaurant offers an intimate dining experience and features a wide selection of local seafood and a variety of other cuisine. With Tasmanian, mainland and international beers, wines and spirits, there is no need to leave the property.

PROPERTY FEATURES:

- Restaurant (open Sep to May)
- Bar
- Room service (limited Sep to May)
- Guest lounge
- Children's playground
- Internet access (wireless - free)
- Guest laundry
- Parking
- Non smoking

ACCOMMODATION FEATURES:

- Tea/coffee making facilities
- Mini bar
- Ironing facilities
- Hair dryer

Room serviced daily

Town Centre 1km

Beach 1km

Map page 37 Ref. 3



From **\$125** PER ROOM PER NIGHT*



1 OCT 11 – 30 SEP 12	ADULTS	1 NT	3 NTS	5 NTS
Standard	1 to 2	125	375	625
Seaview	1 to 2	150	450	750
2 Bedroom Seaview	1 to 2	175	525	875

1 OCT 12 – 31 MAR 13	ADULTS	1 NT	3 NTS	5 NTS
Standard	1 to 2	130	390	650
Seaview	1 to 2	155	465	775
2 Bedroom Seaview	1 to 2	175	525	875

Children 0 to 2 years – cot/bed charge payable direct.
3 to 14 years – adult prices apply.

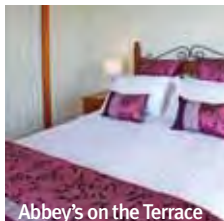
Max capacity Standard/Seaview – 3, 2 Bedroom Seaview – 4.

SSITAS

SUNLOVER BONUS

FREE return trip on The Nut Chairlift per person for stays of 3 nights or more.

Abbey's Cottages, Stanley ★★☆☆



Abbey's on the Terrace

Warm and welcoming cottages and apartments set in the heart of historic Stanley offering sweeping sea views.

Town Centre 10m

Beach 500m

Map page 37 Ref. 3

Reception: 19-21 Church St, Stanley
Cottages: Alexander Tce and Marshall St

PROPERTY FEATURES:

- Charge back facility at the Stanley Hotel
- Sea views ■ Laundry ■ Parking

ACCOMMODATION FEATURES:

- Heating
- Spa
- Tea/coffee making facilities
- Kitchen with microwave
- CD/DVD player
- Washer/dryer
- Ironing facilities
- Hair dryer
- All rooms non smoking

Room serviced weekly

From **\$180** PER ROOM PER NIGHT*

1 OCT 11 – 31 MAR 12	ADULTS	1 NT	2 NTS	5 NTS
Abbey's The Bakery	1 to 2	180	360	900
Abbey's on Church	1 to 2	190	380	950
Abbey's on the Terrace	1 to 2	230	460	1150
Abbey's The Green House	1 to 2	230	460	1150
Abbey's Spa Cottage	1 to 2	230	460	1150

1 APR 12 – 31 MAR 13	ADULTS	1 NT	2 NTS	5 NTS
Abbey's The Bakery	1 to 2	180	360	900
Abbey's on Church	1 to 2	180	360	900
Abbey's on the Terrace	1 to 2	230	460	1150
Abbey's The Green House	1 to 2	230	460	1150
Abbey's Spa Cottage	1 to 2	230	460	1150

2 night minimum stay applies 6 – 9 Apr, 24 Dec 12 – 15 Jan, 29 – 31 Mar 13.

Children 0 to 2 years – cot free of charge.
3 to 14 years – adult prices apply.

Max capacity Abbey's The Bakery/Abbey's on Church – 2,
Abbey's on the Terrace – 4, Abbey's The Green House/Abbey's Spa Cottage – 6.

ABBTAS

Horizon Deluxe Apartments, Stanley ◆◆◆◆◇



Enjoy panoramic views over Stanley and The Nut from contemporary studio style apartments.

Town Centre 1km

Beach 1km

Map page 37 Ref. 3

58 Dovecote Road, Stanley

PROPERTY FEATURES:

- Barbecue area ■ Internet facilities
- Guest laundry ■ Parking

ACCOMMODATION FEATURES:

- Air-conditioning ■ Ocean views
- Balcony ■ Mini bar ■ CD/DVD player
- Barbecue ■ Internet access
- Kitchen with microwave and dishwasher
- Spa ■ Washer/dryer ■ Cable TV
- Ironing facilities ■ Bathrobes
- Hair dryer ■ All rooms non smoking

Room serviced daily



From **\$335** PER ROOM PER NIGHT*

1 OCT 11 – 30 SEP 12	ADULTS	1 NT	3 NTS	5 NTS
Luxury Studio	1 to 2	335	1005	1675

1 OCT 12 – 31 MAR 13	ADULTS	1 NT	3 NTS	5 NTS
Luxury Studio	1 to 2	340	1020	1700

Includes Full breakfast daily.

Children 0 to 15 years – not catered for.

Max capacity 2.

HORTAS

North West Coast

Tall Timbers, Smithton ◆◆◆◆



Scotchtown Road, Smithton

From the moment you enter the imposing foyer of this property, the ambience of the solid Blackwood and Celery Top pine beams tell you that Tall Timbers is unique.

The richness and feel of local timbers are a celebration of the natural heritage of the area and of the pioneering spirit of our colonial forebears.

Situated on 125 acres of rich farmland, the property boasts expansive manicured gardens, trout stocked dam and stream, recreational facilities and massage treatments for those sore muscles.

Tall Timbers Tasmania offers spacious self-contained one and two bedroom apartments, spa and motel style units.

PROPERTY FEATURES:

- Restaurants (2) ▪ Bars (2)
- Room service (limited)
- Games room
- Pool (heated indoor)
- Barbecue area
- Spa ▪ Tennis courts (2)
- Gymnasium ▪ Massage facilities
- Guest laundry ▪ Parking

ACCOMMODATION FEATURES:

- Heating ▪ Tea/coffee making facilities
- Mini bar ▪ In-room movies (free)
- Kitchen with microwave (Apartments)
- Hair dryer ▪ Ironing facilities

Room serviced daily

Town Centre 1.7km

Map page 37 Ref. 4



From **\$170** PER ROOM PER NIGHT*



Room with Ensuite



1 Bedroom

1 OCT 11 – 30 SEP 12	ADULTS	1 NT	3 NTS	5 NTS
Room with Ensuite	1 to 2	180	540	900
1 Bedroom	1 to 2	200	600	1000
2 Bedroom	1 to 4	270	810	1350

1 OCT 12 – 31 MAR 13	ADULTS	1 NT	3 NTS	5 NTS
Room with Ensuite	1 to 2	170	510	850
1 Bedroom	1 to 2	190	570	950
2 Bedroom	1 to 4	250	750	1250

Children 0 to 2 years – cot/bed charge payable direct.
3 to 14 years – \$15 per child per night.

Max capacity Room with Ensuite – 3, 1 Bedroom – 2,
2 Bedroom – 5.

TALTAS

A R Reflections River Cruise



Discover the densely forested Arthur River on this six hour eco cruise. Your journey takes you firstly to the river mouth and nearby Arthur River settlement, then 15 kilometres upstream past the Arthur/Frankland river junction before returning to Warra Landing for lunch. After lunch the rainforest walk to Warra Waterfalls is breathtaking.

INCLUDES:

- 6 hour scenic eco cruise
- Lunch with complimentary wine
- Coffee and tea before departure
- Expert guide and commentary

Departs: Daily from Arthur River Jetty at 10:15am
(Sep – May)

Returns: 4:15pm



PRICE:	1 OCT 11 – 31 MAR 12	2 SEP 12 – 31 MAR 13
Adult	\$95	\$99
Child 6-15 years	\$48	\$48
Family 2 adults and 2 children	\$260	\$270

Not suitable for children under 6 years. Other prices apply 1 Apr – 31 May 12.

A R REFLECTION RIVER CRUISES

ARRTAS

Tall Timbers Helicopter



This helicopter experience takes in the spectacular coastlines, showcasing the history of the expansive Woolnorth Property, offering a close up of the largest windfarm in Australia and will sweep visitors over the canopy of the Tarkine Forest, the largest cold climate rainforest in the southern hemisphere.

INCLUDES:

- 30 minute scenic helicopter flight
- Safety briefing
- Expert flight commentary

Departs: Daily from Tall Timbers, Smithton at 9am
(Oct – May)

Duration: 30 minutes

PRICE PER PERSON:

Minimum 2 people	\$615
3 people	\$425
4 people	\$330
5 people	\$275

Not suitable for children under 6 years. Longer scenic flight prices also available.

TALL TIMBERS ADVENTURE TOURS

TTATAS

Tall Timbers Adventure Tour



Unlock the mysteries of the Tarkine Wilderness, the largest cool climate rainforest in the southern hemisphere, stretching from button grass plains to the 'Edge of the World' at the Great Southern Ocean.

Take this full day 4WD tour and experience the far North West Coast of Tasmania.

INCLUDES:

- Full day Tarkine 4WD adventure tour
- Morning tea
- Gourmet lunch
- Tasmanian wine and beverages
- Experienced local guide

Departs: Daily from Tall Timbers, Smithton at 9am
(Sep – Jun)

Returns: 5pm

PRICE PER PERSON:

Adult	\$240
Child 6-14 years	\$140

Not suitable for children under 6 years.

TALL TIMBERS ADVENTURE TOURS

TTATAS