



Launceston

## Our Favourites

Get up close to a Tasmanian Devil at Trowunna Wildlife Park

Tee off at Barnbougle Dunes – Australia’s number one public golf course

Explore Australia’s biggest working craft fair at Deloraine in November

Taste some of the world’s finest sparkling wines along the Tamar Valley Wine Route

Choosing a base in the centre of northern Tasmania is simple: it has to be Launceston. Here you can eat, drink and be merry. This is a city that prides itself on its artisans, who include chefs, wine makers, farmers and fishermen who all share a passion for local produce.

Let’s start with Launceston’s most fantastic attraction just 10 minutes from the city centre, Cataract Gorge. Explore rock-walled walking trails and marvel at the South Esk River travelling through the gorge.

Launceston’s where all the goodies grown and made in the region come together for you to enjoy in restaurants, delis and cafés. Then again, if you prefer to get your gourmet fare direct from the source, that’s easy to arrange. Travel the Tamar Valley Wine Route through fields of lavender, strawberries and grapes. Mole Creek’s wildlife park is great fun, and it’s also on the food and wine trail, just like Westbury’s village green.

King Solomon and Marakoopa Caves, both near the town of Mole Creek, showcase glow worms that twinkle to the delight of visitors and highlight the incredible caves in which they live.

Travel north for 15 minutes and you’ll find Hollybank Treetops Adventure. One of Tasmania’s most exciting tourism ventures, this nature experience allows visitors to glide across the treetops for a unique view of the forest. Experience the serenity of the forest in one of Hollybank’s Enchanted Night tours.

Golfers who fancy a challenge can get swept away with the 18 hole championship golf course at Barnbougle Dunes, just north of Launceston at Bridport. Lauded as one of the country’s great golf courses, its links course is sculpted from sand dunes.

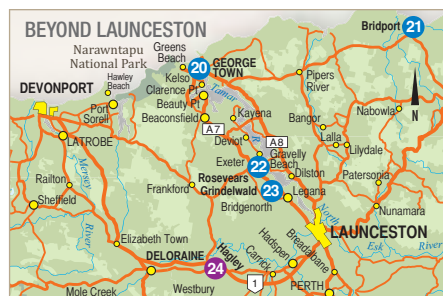
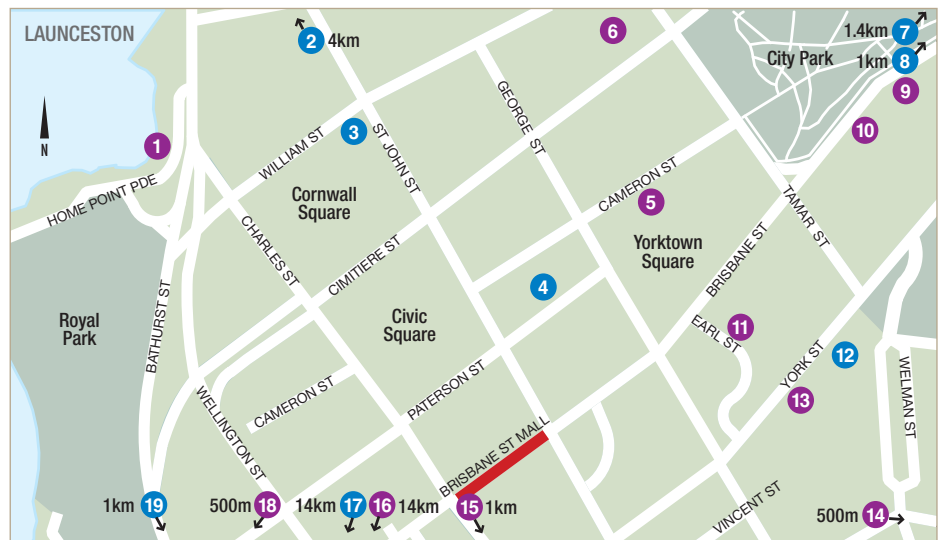
## FIND YOUR ACCOMMODATION

### LAUNCESTON

REF.	APARTMENTS	PAGE
2	Alanvale Apartment & Motor Inn ★★★★★	44
19	Alice’s Cottages & Spa Hideaways ★★★★★	45
12	Apartments at York Mansions ★★★★★	45
17	Country Club Villas ★★★★★	48
8	Elphin Villas ★★★★★	44
7	The Lido Boutique Apartments ★★★★★	45
4	Quest Launceston ★★★★★	48
3	The Sebel Launceston ★★★★★	48

REF.	HOTELS	PAGE
14	Ashton Gate Guest House ★★★★★	46
13	Balmoral on York ★★★★★	46
6	Clarion Hotel City Park Grand ★★★★★	46
10	Commodore Regent Hotel ★★★★★	44
16	Country Club Tasmania ★★★★★	48
15	Hotel Charles ★★★★★	47
5	Hotel Grand Chancellor ★★★★★	46
18	Leisure Inn Penny Royal ★★★★★	44
11	Mercure Launceston ★★★★★	47
1	Peppers Seaport Hotel ★★★★★	47
9	Sandors on the Park ★★★★★	45



## FIND YOUR ACCOMMODATION

### BEYOND LAUNCESTON

REF.	APARTMENTS	PAGE
23	Aspect Tamar Valley Resort ★★★★★	49
21	Barnbougle Links Golf Course ★★★★★	50
20	Peppers York Cove ★★★★★	49
22	Rosevears Vineyard Retreat ★★★★★	49

REF.	HOTELS	PAGE
24	Quamby Estate ★★★★★	49



# Launceston

## Alanvale Apartments & Motor Inn ★★★☆



Apartment and motel accommodation set in traditional Tudor Village style. Enjoy the tranquil surroundings complete with village green.

City Centre 4km  
Map page 43 Ref. 2

15-17 Alanvale Road, Newnham

### PROPERTY FEATURES:

- Bistro
- Bar
- Parking

### ACCOMMODATION FEATURES:

- Balcony or patio
- Kitchen (Apartments)
- Tea/coffee making facilities
- Internet access (wireless)
- Washer/dryer (Apartments)
- All rooms non smoking

Room serviced daily  
Apartment serviced weekly



From \$91 PER ROOM PER NIGHT\*

1 OCT 11 – 31 AUG 12	ADULTS	1 NT	5 NTS	6 NTS
Motel	1 to 2	106	530	636
Standard 1 Bedroom	1 to 2	130	650	780
Standard 2 Bedroom	1 to 4	162	810	972
1 SEP 12 – 31 MAR 13	ADULTS	1 NT	5 NTS	7 NTS
Motel	1 to 2	108	540	756
Standard 1 Bedroom	1 to 2	132	660	924
Standard 2 Bedroom	1 to 4	164	820	1148

Superior 1 and 2 Bedroom prices also available.

**Children** 0 to 3 years – cot free of charge.  
4 to 10 years – adult prices apply.

**Max capacity** Motel/Standard 1 Bedroom – 3, Standard 2 Bedroom – 5.

ALALST

### SUNLOVER BONUS

FREE Night Offer: Stay 7 nights, pay for 6, valid 1 Oct 11 – 31 Mar 12.

## Commodore Regent Hotel ★★★☆



Perfectly located opposite City Park and within easy walking distance to the CBD, Cataract Gorge and Aurora Stadium.

City Centre 500m  
Map page 43 Ref. 10

13 Brisbane Street, Launceston

### PROPERTY FEATURES:

- Restaurant
- Bar
- Room service (limited)
- Guest lounge
- Internet access (wireless - free)
- Laundry/dry cleaning service
- Parking
- Non smoking

### ACCOMMODATION FEATURES:

- Air-conditioning
- Tea/coffee making facilities
- Mini bar
- Laundry
- Ironing facilities
- Hair dryer

Room serviced daily

From \$90 PER ROOM PER NIGHT\*

1 OCT 11 – 31 MAR 12	ADULTS	1 NT	4 NTS	6 NTS
Superior Queen/Twin	1 to 2	165	660	990
Superior Family	1 to 2	165	660	990
1 APR – 2 MAY, 6 MAY – 31 AUG 12 <sup>^</sup>	ADULTS	1 NT	4 NTS	6 NTS
Superior Queen/Twin	1 to 2	120	360	600
Superior Family	1 to 2	140	420	700
1 SEP 12 – 8 FEB, 11 FEB – 31 MAR 13 <sup>^</sup>	ADULTS	1 NT	4 NTS	6 NTS
Superior Queen/Twin	1 to 2	167	501	835
Superior Family	1 to 2	187	561	935

Other prices apply for AFL matches, 3 – 5 May 12, 9 – 10 Feb 13.

**Children** 0 to 11 years – free when sharing with an adult and using existing bedding.

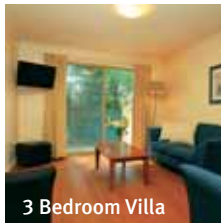
**Max capacity** Superior Queen – 2, Superior Twin – 3, Superior Family – 4.

COMLST

### SUNLOVER BONUS

<sup>^</sup>FREE Night Offer: Stay 4 nights, pay for 3.  
(4 and 6 night prices include 1 free night)

## Elphin Villas ★★★☆



3 Bedroom Villa

A touch of Tuscany in the leafy heart of Launceston, nestled amongst beautiful terraced gardens.

City Centre 1km  
Map page 43 Ref. 8

29A Elphin Road, Launceston

### PROPERTY FEATURES:

- Barbecue area
- Guest laundry
- Parking

### ACCOMMODATION FEATURES:

- Heating
- Limited cooking facilities (Studios)
- Kitchen (Villas)
- Tea/coffee making facilities
- Internet access (broadband)
- All rooms non smoking

Room serviced daily Monday to Friday.  
Limited service Saturday, Sunday and public holidays.



From \$140 PER ROOM PER NIGHT\*

1 OCT 11 – 30 APR, 1 SEP 12 – 31 MAR 13	ADULTS	1 NT	3 NTS	5 NTS
Motel	1 to 2	145	435	725
1 Bedroom Studio	1 to 2	165	495	825
3 Bedroom Villa	1 to 2	220	660	1100
3 Bedroom Spa Villa	1 to 2	240	720	1200
1 MAY – 31 AUG 12	ADULTS	1 NT	3 NTS	5 NTS
Motel	1 to 2	140	420	700
1 Bedroom Studio	1 to 2	160	480	800
3 Bedroom Villa	1 to 2	215	645	1075
3 Bedroom Spa Villa	1 to 2	235	705	1175

2 Bedroom Studio prices also available.

**Children** 0 to 2 years – cot charge payable direct.  
3 to 14 years – adult prices apply.

**Max capacity** Motel/1 Bedroom Studio – 2,  
3 Bedroom Villa/3 Bedroom Spa Villa – 6.

ELPLST

## Leisure Inn Penny Royal ◆◆◆◆



A boutique heritage feel with modern and well appointed hotel rooms, set adjacent to the famous Cataract Gorge.

City Centre 500m  
Map page 43 Ref. 18

147 Paterson Street, Launceston

### PROPERTY FEATURES:

- Room service (limited)
- Dry cleaning service
- Guest laundry
- Parking

### ACCOMMODATION FEATURES:

- Heating
- Limited cooking facilities (2 Bedrooms)
- Tea/coffee making facilities
- Internet access (broadband)
- Ironing facilities
- Hair dryer

Room serviced daily

From \$144 PER ROOM PER NIGHT\*

1 OCT 11 – 30 APR 12	ADULTS	1 NT	3 NTS	5 NTS
Hotel	1 to 2	160	480	800
2 Bedroom	1 to 2	199	597	995
1 MAY – 30 SEP 12	ADULTS	1 NT	3 NTS	5 NTS
Hotel	1 to 2	144	432	720
2 Bedroom	1 to 2	179	537	895
1 OCT 12 – 31 MAR 13	ADULTS	1 NT	3 NTS	5 NTS
Hotel	1 to 2	169	507	845
2 Bedroom	1 to 2	207	621	1035

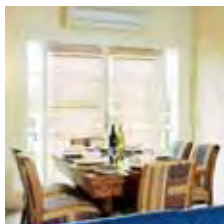
Room and Breakfast prices also available.

**Children** 0 to 2 years – cot/bed charge payable direct.  
3 to 12 years – up to 2 children free when sharing with 2 adults and using existing bedding.

**Max capacity** Hotel – 3, 2 Bedroom – 4.

LIPLST

**The Lido Boutique Apartments** ★★★☆



Spacious apartments reflecting the style of the 1930s. Enjoy friendly service, a high standard of accommodation and attention to detail.

City Centre 1.4km  
Map page 43 Ref. 7

47-49 Elphin Road, Launceston

**PROPERTY FEATURES:**

- DVD library ▪ Parking

**ACCOMMODATION FEATURES:**

- Air-conditioning ▪ Balcony or patio
- Heating ▪ CD/DVD player
- Kitchen with microwave and dishwasher
- In-room movies (free) ▪ Ironing facilities
- Internet access (broadband)
- Hair dryer ▪ Washer/dryer
- 2 bathrooms in 2 Bedrooms
- Bath robes ▪ All rooms non smoking

Apartment serviced daily Monday to Friday. Limited service Saturday, Sunday and public holidays.



From **\$144** PER ROOM PER NIGHT\*

	ADULTS	1 NT	3 NTS	5 NTS
1 OCT 11 – 30 APR, 1 OCT 12 – 31 MAR 13				
1 Bedroom Deluxe	1 to 2	200	600	1000
2 Bedroom Superior	4	330	990	1650
3 Bedroom Superior	6	410	1230	2050
1 MAY – 30 SEP 12				
1 Bedroom Deluxe	1 to 2	144	432	720
2 Bedroom Superior	4	260	780	1300
3 Bedroom Superior	6	340	1020	1700

2 night minimum stay applies 20 Dec 11 – 20 Jan 12, 20 Dec 12 – 20 Jan 13 and over AFL Football weekends. 3 Bedroom Japanese Imperial Spa Suite prices also available.

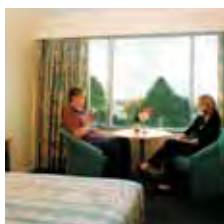
**Includes** Light breakfast on the first morning.

**Children** 0 to 3 years – cot/bed charge payable direct. 4 to 14 years – adult prices apply.

**Max capacity** 1 Bedroom Deluxe – 3, 2 Bedroom Superior – 4, 3 Bedroom Superior – 6.

LIDLST

**Sandors on the Park** ★★★☆



Hotel accommodation overlooking spectacular City Park, close to local attractions and within easy walking distance of the CBD.

City Centre 500m  
Map page 43 Ref. 9

3 Brisbane Street, Launceston

**PROPERTY FEATURES:**

- Café
- Room service (limited)
- Laundry/dry cleaning service
- Parking (off-street)

**ACCOMMODATION FEATURES:**

- Air-conditioning
- Tea/coffee making facilities
- Mini bar
- Cable TV
- Internet access (wireless)
- Hair dryer
- Ironing facilities

Room serviced daily

From **\$150** PER ROOM PER NIGHT\*

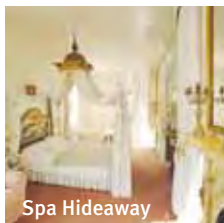
	ADULTS	1 NT	3 NTS	5 NTS
1 OCT 11 – 30 APR 12				
Standard/Family	1 to 2	158	474	790
1 MAY – 30 SEP 12				
Standard/Family	1 to 2	150	450	750
1 OCT 12 – 31 MAR 13				
Standard/Family	1 to 2	161	483	805

**Children** 0 to 2 years – cot free of charge. 3 to 14 years – \$20 per child per night.

**Max capacity** Standard – 2, Family – 4.

SANLST

**Alice's Cottages and Spa Hideaways** ★★★★★



A romantic retreat tucked away in the historic heart of Launceston. Each self contained cottage has its own secret romantic theme.

City Centre 1km  
Map page 43 Ref. 19

129 Balfour Street, Launceston

**PROPERTY FEATURES:**

- Barbecue area
- Guest laundry
- Parking
- Non smoking

**ACCOMMODATION FEATURES:**

- Air-conditioning (except Aphrodite's Villa)
- Fireplace
- Mini bar
- Kitchen with microwave
- Ironing facilities
- Laundry
- Hair dryer
- All rooms non smoking

Cottage serviced every 2 days

From **\$170** PER ROOM PER NIGHT\*

	ADULTS	1 NT	2 NTS	3 NTS
1 OCT 11 – 31 MAR 12				
Shambles Cottage	2	170	340	510
Spa Hideaway	2	206	412	618
Aphrodite's Villa	2	N/A	460	690
1 APR 12 – 31 MAR 13				
Shambles Cottage	2	170	340	510
Spa Hideaway	2	206	412	618
Aphrodite's Villa	2	N/A	466	699

Sole use prices also available.

**Includes** Light breakfast daily. Complimentary port, chocolates and shortbread on arrival.

**Children** 0 to 14 years – not catered for.

**Max capacity** Shambles Cottage/Spa Hideaway – 2, Aphrodite's Villa – 4.

ACSLST

**Apartments at York Mansions** ★★★★★



Within the original walls of the National Trust classified York Mansions, built in 1840, are spacious apartments furnished with authentic period décor.

City Centre 500m  
Map page 43 Ref. 12

9-11 York Street, Launceston

**PROPERTY FEATURES:**

- Gas log fire ▪ DVD library
- Internet access (wireless)
- Barbecue ▪ Guest laundry ▪ Parking

**ACCOMMODATION FEATURES:**

- Balcony (except Gamekeeper and Lodge)
- Fireplace ▪ Heating
- Kitchen with microwave ▪ Mini bar
- Electric blankets ▪ CD/DVD player
- Internet access (wireless)
- Spa bath (except Baroness and Lodge)
- Ironing facilities ▪ Washer/dryer
- Bath robes ▪ Hair dryer
- All rooms non smoking

Apartment serviced every 2 days

From **\$228** PER ROOM PER NIGHT\*

	ADULTS	1 NT	3 NTS	5 NTS
1 OCT 11 – 31 MAR 12				
Baroness/Lodge	1 to 2	228	684	1140
Gamekeeper/Countess	1 to 2	246	738	1230
Duchess of York	1 to 2	258	774	1290
1 APR – 31 AUG 12				
Baroness/Lodge	1 to 2	240	720	1200
Gamekeeper/Countess	1 to 2	254	762	1270
Duchess of York	1 to 2	268	804	1340
1 SEP 12 – 31 MAR 13				
Baroness/Lodge	1 to 2	248	744	1240
Gamekeeper/Countess	1 to 2	262	786	1310
Duchess of York	1 to 2	276	828	1380

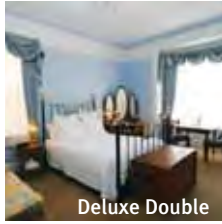
**Children** 0 to 7 years – not catered for. 8 to 14 years – adult prices apply.

**Max capacity** 4.

YORLST

# Launceston

## Ashton Gate Guest House ★★★★★



A beautifully restored Heritage Listed Victorian home, located just a short stroll from the city centre.

City Centre 500m  
Map page 43 Ref. 14

32 High Street, East Launceston

### PROPERTY FEATURES:

- Bar
- Guest lounge
- Internet access (wireless - free)
- Sundeck
- Parking

### ACCOMMODATION FEATURES:

- Air-conditioning
- Kitchen with microwave (Cottage)
- Tea/coffee making facilities
- Ironing facilities
- Hair dryer
- All rooms non smoking

Room serviced daily

From **\$155** PER ROOM PER NIGHT\*

1 OCT 11 – 31 MAR 13	ADULTS	1 NT	2 NTS	5 NTS
Standard	2	155	310	775
Deluxe Double	2	175	350	875
Deluxe Spa/Self Contained Cottage	2	N/A	390	975

Sole use prices also available.

**Includes** Full breakfast daily.

**Children** 0 to 15 years – \$15 per child per night.

**Max capacity** Standard/Deluxe Double – 2, Deluxe Spa – 3, Self Contained Cottage – 4.

**ASHLST**

### SUNLOVER EXCLUSIVE

FREE upgrade to a Deluxe Double room with a bottle of Tasmanian wine on arrival for stays of 3 nights or more, valid 1 Jun – 31 Aug 12.

## Balmoral on York ★★★★★



Spacious and comfortable hotel rooms centrally located to Launceston's parks, cafés and restaurants.

City Centre 800m  
Map page 43 Ref. 13

19 York Street, Launceston

### PROPERTY FEATURES:

- Restaurant
- Café ■ Bar
- Room service (limited)
- Internet access (wireless)
- Guest laundry
- Parking (free)

### ACCOMMODATION FEATURES:

- Air-conditioning ■ Mini bar
- Tea/coffee making facilities
- Cable TV ■ In-room movies (free)
- Internet access (wireless)
- Ironing facilities ■ Hair dryer
- All rooms non smoking

Room serviced daily

From **\$150** PER ROOM PER NIGHT\*

1 OCT 11 – 31 MAR 12*	ADULTS	1 NT	3 NTS	5 NTS
Residential View Standard	1 to 2	150	450	750
City View Premier	1 to 2	175	525	875
Studio Balcony	1 to 2	190	570	950

1 APR – 31 MAY, 1 OCT 12 – 31 MAR 13 <sup>^</sup>	ADULTS	1 NT	3 NTS	5 NTS
Residential View Standard	1 to 2	183	549	915
City View Premier	1 to 2	204	612	1020

1 JUN – 30 SEP 12 <sup>^</sup>	ADULTS	1 NT	3 NTS	5 NTS
Residential View Standard	1 to 2	171	513	855
City View Premier	1 to 2	193	579	965

**Includes** <sup>+</sup> Full breakfast daily.  
<sup>^</sup> Light breakfast daily.

**Children** 0 to 4 years – cot/bed charge payable direct.  
5 to 12 years – \$30 per child per night, room only.

**Max capacity** City View Premier/Studio Balcony – 2, Residential View Standard – 3.

**BOYLST**

## Clarion Hotel City Park Grand ★★★★★☆



Enjoy a level of style, sophistication and elegance in this superb heritage hotel located in the CBD.

City Centre 20m  
Map page 43 Ref. 6

22 Tamar Street, Launceston

### PROPERTY FEATURES:

- Restaurant ■ Bar ■ Room service (limited)
- Guest lounge ■ Guest laundry
- Laundry/dry cleaning service
- Parking (undercover security)

### ACCOMMODATION FEATURES:

- Air-conditioning
- Tea/coffee making facilities
- Mini bar ■ Cable TV
- In-room movies (free) ■ CD/DVD player
- Internet access (broadband)
- Spa bath (Spa Suites)
- Bathrobes ■ Ironing facilities ■ Safe
- All rooms non smoking

Room serviced daily

From **\$170** PER ROOM PER NIGHT\*

1 – 30 OCT 11	ADULTS	1 NT	3 NTS	5 NTS
Deluxe	1 to 2	170	510	850
Queen Spa	1 to 2	200	600	1000
Spa Family	1 to 2	230	690	1150

1 NOV 11 – 31 MAR 12	ADULTS	1 NT	3 NTS	5 NTS
Deluxe	1 to 2	200	600	1000
Queen Spa	1 to 2	230	690	1150
Spa Family	1 to 2	260	780	1300

1 APR – 31 OCT 12	ADULTS	1 NT	3 NTS	5 NTS
Deluxe	1 to 2	176	528	880
Queen Spa	1 to 2	206	618	1030
Spa Family	1 to 2	236	708	1180

1 NOV 12 – 31 MAR 13	ADULTS	1 NT	3 NTS	5 NTS
Deluxe	1 to 2	206	618	1030
Queen Spa	1 to 2	236	708	1180
Spa Family	1 to 2	266	798	1330

**Children** 0 to 12 years – free when sharing with 2 adults and using existing bedding.

**Max capacity** Deluxe – 3, Queen Spa – 2, Spa Family – 4.

**CPGLST**

## Hotel Grand Chancellor Launceston ★★★★★☆



Centrally located in the heart of Launceston with City Park, Cataract Gorge and the Old Seaport Marina all within walking distance.

City Centre 500m  
Map page 43 Ref. 5

29 Cameron Street, Launceston

### PROPERTY FEATURES:

- 24 hour reception
- Restaurant ■ Bar
- Room service (24 hour)
- Guest laundry

### ACCOMMODATION FEATURES:

- Air-conditioning
- Tea/coffee making facilities
- Mini bar
- In-room movies (pay to view)
- Internet access (broadband)
- Ironing facilities ■ Hair dryer

Room serviced daily



From **\$99** PER ROOM PER NIGHT\*

1 OCT – 9 NOV, 14 NOV 11 – 27 FEB, 1 – 31 MAR 12	ADULTS	1 NT	2 NTS	5 NTS
Deluxe	1 to 2	179	358	895
Superior	1 to 2	221	442	1105

1 APR – 30 SEP 12	ADULTS	1 NT	2 NTS	5 NTS
Deluxe	1 to 2	148	296	740
Superior	1 to 2	178	356	890

1 OCT 12 – 31 MAR 13	ADULTS	1 NT	2 NTS	5 NTS
Deluxe	1 to 2	168	336	840
Superior	1 to 2	198	396	990

Other prices apply 10 – 13 Nov 11, 28 – 29 Feb 12.

**Children** 0 to 12 years – free when sharing with an adult and using existing bedding. Cot free of charge.

**Max capacity** Deluxe – 3, Superior – 2 adults/1 child.

**HGCLST**

### SUNLOVER BONUS

FREE Night Offer: Stay 3 nights, pay for 2, valid 1 Apr – 31 Aug 12.

## Hotel Charles ◆◆◆◆



287 Charles Street, Launceston

Hotel Charles is located on the fringe of Launceston's business district with stunning views over the city to the Tamar Valley. The hotel offers a choice of modern hotel or apartment style accommodation.

With an emphasis on privacy, charm and attention to detail, the hotel features an extensive range of facilities including Restaurant ESCA, private dining room, guest lounge and an internet kiosk.

### PROPERTY FEATURES:

- 24 hour reception
- Restaurant
- Room service (limited)
- Guest lounge
- Guest laundry
- Dry cleaning service
- Business services
- Internet facilities
- Parking (free)

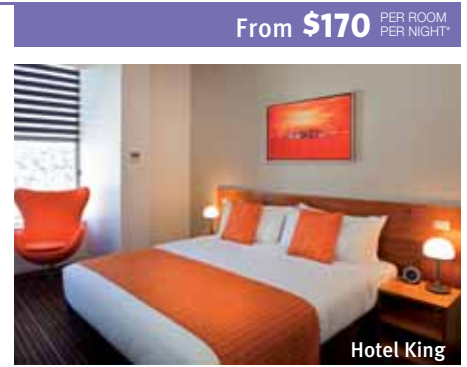
### ACCOMMODATION FEATURES:

- Air-conditioning
- Mini bar
- Tea/coffee making facilities
- In-room movies (free)
- Internet access (broadband - free)
- Ironing facilities
- Hair dryer

Room serviced daily

City Centre 1km

Map page 43 Ref. 15



From \$170 PER ROOM PER NIGHT\*

1 OCT 11 – 31 MAR 12	ADULTS	1 NT	3 NTS	5 NTS
Hotel King	1 to 2	180	540	900
Hotel King Studio	1 to 2	190	570	950
Executive Studio	1 to 2	220	660	1100
1 Bedroom Spa Suite	1 to 2	300	900	1500
2 Bedroom Interconnecting	1 to 4	330	990	1650
1 APR – 30 SEP 12	ADULTS	1 NT	3 NTS	5 NTS
Hotel King	1 to 2	170	510	850
Hotel King Studio	1 to 2	180	540	900
Executive Studio	1 to 2	210	630	1050
1 Bedroom Spa Suite	1 to 2	300	900	1500
2 Bedroom Interconnecting	1 to 4	320	960	1600
1 OCT 12 – 31 MAR 13	ADULTS	1 NT	3 NTS	5 NTS
Hotel King	1 to 2	200	600	1000
Hotel King Studio	1 to 2	210	630	1050
Executive Studio	1 to 2	240	720	1200
1 Bedroom Spa Suite	1 to 2	360	1080	1800
2 Bedroom Interconnecting	1 to 4	380	1140	1900

**Children** 0 to 2 years – cot free of charge.  
3 to 14 years – adult prices apply.

**Max capacity** Hotel King/Hotel King Studio – 2,  
Executive Studio/1 Bedroom Spa Suite – 3,  
2 Bedroom Interconnecting – 4.

CRSLST

## Mercure Launceston ★★★★★



3 Earl Street, Launceston

### PROPERTY FEATURES:

- 24 hour reception
- Restaurant ■ Bar
- Room service (24 hour)
- Parking

### ACCOMMODATION FEATURES:

- Tea/coffee making facilities
- Mini bar
- In-room movies (pay to view)
- Internet access (broadband)
- Ironing facilities
- Hair dryer

Room serviced daily

Conveniently located in the city centre, 15 minutes drive from the airport and two minutes walk from the main shopping precinct.

City Centre 200m  
Map page 43 Ref. 11



From \$113 PER ROOM PER NIGHT\*

1 OCT 11 – 9 NOV, 14 NOV 11 – 26 FEB, 2 – 31 MAR 12	ADULTS	1 NT	3 NTS	5 NTS
Standard	1 to 2	183	549	915
Superior	1 to 2	194	582	970
1 APR – 30 SEP 12 <sup>^</sup>	ADULTS	1 NT	3 NTS	5 NTS
Standard	1 to 2	169	338	676
Superior	1 to 2	190	380	760
1 OCT 12 – 14 FEB, 18 – 21 FEB, 24 – 25 FEB, 28 FEB – 31 MAR 13	ADULTS	1 NT	3 NTS	5 NTS
Standard	1 to 2	190	570	950
Superior	1 to 2	210	630	1050

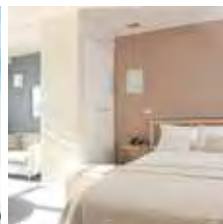
Other prices apply 10 – 13 Nov 11, 27 Feb – 1 Mar 12, 15 – 17 Feb, 22 – 23 Feb, 26 – 27 Feb 13.

**Children** 0 to 15 years – up to 2 children free when sharing with 2 adults and using existing bedding.

**Max capacity** 3. **MERLST**

**SUNLOVER BONUS**  
<sup>^</sup>FREE Night Offer: Stay 3 nights, pay for 2.  
(3 and 5 night prices include 1 free night)

## Peppers Seaport Hotel ★★★★★



28 Seaport Boulevard, Launceston

### PROPERTY FEATURES:

- Restaurant
- Bar
- Café
- Laundry/dry cleaning service
- Massage facilities

### ACCOMMODATION FEATURES:

- Air-conditioning
- Tea/coffee making facilities
- Mini bar
- Cable TV
- Ironing facilities
- Hair dryer

Room serviced daily

Waterfront accommodation, just five minutes from the centre of Launceston, at the heart of Launceston's Old Seaport Dock area.

City Centre 1km  
Map page 43 Ref. 1

From \$219 PER ROOM PER NIGHT\*

1 OCT 11 – 9 FEB, 12 – 28 FEB, 1 – 31 MAR 12	ADULTS	1 NT	3 NTS	5 NTS
Standard City View Room	1 to 2	269	807	1345
Standard River View Room	1 to 2	289	867	1445
1 APR – 30 SEP 12	ADULTS	1 NT	3 NTS	5 NTS
City View Studio	1 to 2	219	657	1095
River View Studio	1 to 2	239	717	1195
1 OCT 12 – 25 DEC 12, 3 JAN – 7 FEB, 10 – 25 FEB, 28 FEB – 31 MAR 13	ADULTS	1 NT	3 NTS	5 NTS
City View Studio	1 to 2	239	717	1195
River View Studio	1 to 2	259	777	1295

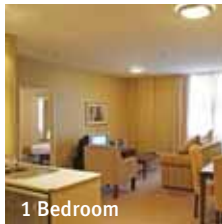
Other prices apply 10 – 11 Feb 12, 29 Feb 12, 26 Dec 12 – 2 Jan, 8 – 9 Feb, 26 – 27 Feb 13. City View Suite and Junior Suite prices also available.

**Children** 0 to 12 years – free when sharing with an adult and using existing bedding.

**Max capacity** 2. **PEPLST**

# Launceston and Tamar Valley

## Quest Launceston ★★★★★



1 Bedroom

Modern serviced apartments located right in the heart of Launceston, providing easy access to the renowned Tamar Valley Wine Region.

City Centre 200m  
Map page 43 Ref. 4

16 Paterson Street, Launceston

### PROPERTY FEATURES:

- DVD library ▪ Guest laundry
- Internet access (broadband) ▪ Non smoking
- Laundry/dry cleaning service

### ACCOMMODATION FEATURES:

- Air-conditioning
- Mini bar ▪ Tea/coffee making facilities
- Limited cooking facilities (Hotel Studios)
- Kitchen with dishwasher (1 and 2 Bedrooms)
- Laundry (1 and 2 Bedrooms)
- Cable TV ▪ CD/DVD player
- Ironing facilities ▪ Safe

Room serviced daily (except Sunday and public holidays)



From **\$186** PER ROOM PER NIGHT\*

1 OCT 11 – 31 MAR 12	ADULTS	1 NT	3 NTS	5 NTS
Hotel Studio	1 to 2	199	597	995
1 Bedroom	1 to 2	221	663	1105
2 Bedroom	1 to 4	339	1017	1695
1 APR – 10 MAY, 1 OCT 12 – 31 MAR 13	ADULTS	1 NT	3 NTS	5 NTS
Hotel Studio	1 to 2	211	633	1055
1 Bedroom	1 to 2	239	717	1195
2 Bedroom	1 to 4	361	1083	1805
11 MAY – 30 SEP 12	ADULTS	1 NT	3 NTS	5 NTS
Hotel Studio	1 to 2	186	558	930
1 Bedroom	1 to 2	204	612	1020
2 Bedroom	1 to 4	310	930	1550

**Children** 0 to 11 years – free when sharing with 2 adults and using existing bedding.

**Max capacity** Hotel Studio – 2, 1 Brm – 3, 2 Brm – 5. **QULLST**

### SUNLOVER BONUS

FREE bottle of wine for stays of 3 nights or more in a 1 Bedroom, valid 1 – 31 Oct 12.

## The Sebel Launceston ★★★★★



Boutique, suite style accommodation perfectly positioned in the heart of Launceston, close to all major attractions.

City Centre 200m  
Map page 43 Ref. 3

Corner St John and William Streets, Launceston

### PROPERTY FEATURES:

- 24 hour reception ▪ Restaurant
- Room service (24 hour) ▪ Gymnasium
- Guest laundry ▪ Parking (limited)

### ACCOMMODATION FEATURES:

- Air-conditioning ▪ Balcony
- Tea/coffee making facilities
- Limited cooking facilities
- Cable TV ▪ CD/DVD player (on request)
- Internet access (broadband)
- Ironing facilities ▪ Mini bar

Apartment serviced daily



From **\$189** PER ROOM PER NIGHT\*

1 OCT – 10 NOV 11, 14 NOV 11 – 9 FEB 12, 13 – 27 FEB 12, 2 MAR – 16 APR 12, 23 APR – 2 MAY 12, 6 MAY 12 – 7 FEB 13, 11 – 24 FEB 13, 1 – 31 MAR 13	ADULTS	1 NT	3 NTS	5 NTS
1 Bedroom Deluxe Suite	1 to 2	189	567	945
1 Bedroom Spa Suite	1 to 2	209	627	1045
10 – 12 FEB 12, 28 FEB – 1 MAR 12, 3 – 5 MAY 12, 8 – 10 FEB 13, 25 – 28 FEB 13	ADULTS	2 NTS	3 NTS	5 NTS
1 Bedroom Deluxe Suite	1 to 2	662	993	1655
1 Bedroom Spa Suite	1 to 2	702	1053	1755

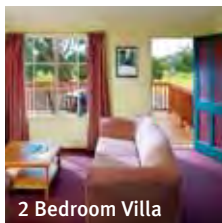
Other prices apply 11 – 13 Nov 11, 17 – 22 Apr 12 and for V8 Supercars.

**Children** 0 to 12 years – free when sharing with an adult and using existing bedding, room only. Cot free of charge.

**Max capacity** 3.

**SEBLST**

## Country Club Villas, Prospect Vale ★★★★★



2 Bedroom Villa

Private self-contained villas located adjacent to the Country Club Tasmania complex. All rooms are spacious and provide relaxing views.

Launceston 14km  
Map page 43 Ref. 17

Casino Rise, Prospect Vale

### PROPERTY FEATURES:

- Restaurants (2) ▪ Bottleshop
- Gymnasium ▪ Tennis court
- Massage facilities
- Access to all Country Club Tasmania facilities ▪ Parking
- Courtesy shuttle between Country Club Villas and main complex

### ACCOMMODATION FEATURES:

- Air-conditioning ▪ Mini bar ▪ Cable TV
- Kitchen with microwave
- Internet access (broadband)

Room serviced daily



From **\$145** PER ROOM PER NIGHT\*

1 OCT 11 – 28 DEC 11, 4 JAN – 9 FEB 12, 11 – 20 FEB 12, 23 FEB – 16 APR 12, 23 APR – 2 MAY 12, 9 MAY – 30 SEP 12	ADULTS	1 NT	3 NTS	5 NTS
1 Bedroom Villa	1 to 2	145	435	725
2 Bedroom Villa	1 to 4	185	555	925
1 OCT 12 – 28 DEC 12, 4 JAN – 7 FEB 13, 10 – 25 FEB 13, 28 FEB – 31 MAR 13	ADULTS	1 NT	3 NTS	5 NTS
1 Bedroom Villa	1 to 2	148	444	740
2 Bedroom Villa	1 to 4	190	570	950

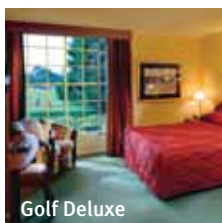
Other prices apply 29 Dec 11 – 3 Jan, 10 Feb, 21 – 22 Feb 12, 17 – 22 Apr, 3 – 8 May 12, 29 Dec 12 – 3 Jan, 8 – 9 Feb, 26 – 27 Feb 13. Other room types also available.

**Children** 0 to 14 years – free when sharing with an adult and using existing bedding. Cot free of charge.

**Max capacity** 4.

**CCVLST**

## Country Club Tasmania, Prospect Vale ★★★★★



Golf Deluxe

Surrounded by natural bush, parklands, lakes and an international standard 18 hole championship golf course and just a short drive from Launceston.

Launceston 14km  
Map page 43 Ref. 16

Country Club Avenue, Prospect Vale

### PROPERTY FEATURES:

- 24 hour reception ▪ Restaurants (3)
- Bars (4) ▪ Room service (24 hour)
- Casino ▪ Library ▪ Golf course (18 hole)
- Pool (heated indoor) ▪ Sauna ▪ Spa
- Horse riding ▪ Gymnasium
- Squash court ▪ Tennis court
- Massage facilities ▪ Parking

### ACCOMMODATION FEATURES:

- Air-conditioning ▪ Mini bar ▪ Cable TV
- Tea/coffee making facilities
- Internet access (broadband)

Room serviced daily



From **\$176** PER ROOM PER NIGHT\*

1 OCT – 28 DEC 11, 4 JAN – 9 FEB 12, 11 – 20 FEB 12, 23 FEB – 16 APR 12, 23 APR – 2 MAY 12, 9 MAY – 28 DEC 12, 4 JAN – 7 FEB 13, 10 – 25 FEB 13, 28 FEB – 31 MAR 13	ADULTS	1 NT	3 NTS	5 NTS
Deluxe	1 to 2	176	528	880
Golf Deluxe	1 to 2	187	561	935
Manor Suite	1 to 2	256	768	1280
29 DEC 11 – 3 JAN, 10 FEB 12, 21 – 22 FEB 12, 17 – 22 APR 12, 3 – 8 MAY 12, 29 DEC 12 – 3 JAN 13, 8 – 9 FEB 13, 26 – 27 FEB 13	ADULTS	1 NT	3 NTS	5 NTS
Deluxe	1 to 2	330	990	1650
Golf Deluxe	1 to 2	350	1050	1750
Manor Suite	1 to 2	480	1440	2400

**Children** 0 to 14 years – free when sharing with an adult and using existing bedding. Cot free of charge.

**Max capacity** Deluxe/Golf Deluxe – 3, Manor Suite – 2.

**COULST**

Aspect Tamar Valley Resort, Grindelwald ◆◆◆◆



2 Bedroom Vista Chalet

Hotel, villa and two bedroom self-contained chalets in the heart of the exotic Tamar Valley Wine Region.

Shop on-site  
Launceston 17km  
Map page 43 Ref. 23

7 Waldhorn Drive, Grindelwald

PROPERTY FEATURES:

- Freshview Day Spa
- Restaurant ■ Golf course (9 hole)
- Pool (heated indoor) ■ Jumping pillow
- Spa ■ Sauna ■ Barbecue area
- Gymnasium ■ Mini golf (18 hole)
- Tennis courts (2 – floodlit) ■ Jet skis
- Parking ■ Non-motorised watersports

ACCOMMODATION FEATURES:

- Heating ■ Tea/coffee making facilities
- Balcony (Garden Suites)
- Kitchen with microwave (Chalets)

Suite serviced daily  
Chalet and Villa serviced weekly



From \$129 PER ROOM PER NIGHT\*

1 OCT 11 – 31 MAR 13	ADULTS	1 NT	3 NTS	5 NTS
Garden Suite <sup>^</sup>	1 to 2	129	387	645
Sunset Villa	1 to 2	139	417	695
2 Bedroom Hideaway Chalet <sup>^</sup>	1 to 2	156	468	780
2 Bedroom Vista Chalet	1 to 2	176	528	880
2 Bedroom Alpine Chalet <sup>^</sup>	1 to 2	196	588	980

**Children** 0 to 2 years – cot/bed charge payable direct.  
3 to 12 years – \$15 per child per night.

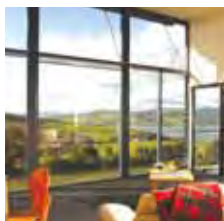
**Max capacity** Garden Suite – 3, Sunset Villa/2 Bedroom Hideaway Chalet – 4, 2 Bedroom Vista Chalet – 6, 2 Bedroom Alpine Chalet – 7.

TMRLST

SUNLOVER BONUS

<sup>^</sup> FREE buffet breakfast daily for stays of 5 nights or more.

Rosevears Vineyard Retreat, Rosevears ★★★★★



Located in the Tamar Valley in the heart of Tasmania's premier wine route, offering accommodation with spectacular views.

Town Centre 8km  
Map page 43 Ref. 22

1A Waldhorn Drive, Rosevears

PROPERTY FEATURES:

- Winery and cellar door
- Restaurant
- Parking

ACCOMMODATION FEATURES:

- Air-conditioning
- Balcony (except Studios)
- Limited cooking facilities with microwave
- Barbecue (except Studios)
- CD/DVD player
- Bathrobes
- Ironing facilities ■ Hair dryer
- All rooms non smoking

Room serviced daily

From \$144 PER ROOM PER NIGHT\*

1 OCT 11 – 30 APR 12, 1 OCT 12 – 31 MAR 13	ADULTS	1 NT	3 NTS	5 NTS
Studio	1 to 2	162	486	810
1 Bedroom	1 to 2	225	675	1125
1 Bedroom Spa	1 to 2	252	756	1260
2 Bedroom	1 to 4	315	945	1575

1 MAY – 30 SEP 12	ADULTS	1 NT	3 NTS	5 NTS
Studio	1 to 2	144	432	720
1 Bedroom	1 to 2	200	600	1000
1 Bedroom Spa	1 to 2	224	672	1120
2 Bedroom	1 to 4	280	840	1400

**Children** 0 to 2 years – cot free of charge.  
3 to 14 years – adult prices apply.

**Max capacity** Studio/1 Bedroom/1 Bedroom Spa – 2,  
2 Bedroom – 4.

ROSLST

Peppers York Cove, George Town ◆◆◆◆◆



Nestled within the historic seaside hamlet of George Town on the Tamar River, this premium waterfront resort has an unforgettable array of experiences.

Town Centre 1km  
Map page 43 Ref. 20

1 Adelaide Street, George Town

PROPERTY FEATURES:

- Restaurant ■ Bar
- Pool (heated) ■ Spa
- Gymnasium ■ Parking

ACCOMMODATION FEATURES:

- Air-conditioning ■ Mini bar ■ Cable TV
- Balcony (Apartments)
- Kitchen with microwave and dishwasher (Apartments)
- Internet access (wireless) ■ Hair dryer
- Washer/dryer (Apartments)
- Ironing facilities
- Spa bath (Deluxe Spas)
- All rooms non smoking

Room serviced daily

From \$260 PER ROOM PER NIGHT\*

1 OCT 11 – 31 MAR 12	ADULTS	1 NT	3 NTS	5 NTS
Deluxe Hotel	1 to 2	260	780	1300
Deluxe Room	1 to 2	280	840	1400
Deluxe Spa	1 to 2	300	900	1500
1 Bedroom	1 to 2	310	930	1550
2 Bedroom	1 to 4	430	1290	2150
3 Bedroom	1 to 6	560	1680	2800

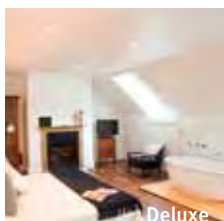
1 APR 12 – 31 MAR 13	ADULTS	1 NT	3 NTS	5 NTS
Deluxe Hotel	1 to 2	269	807	1345
Deluxe Room	1 to 2	279	837	1395
Deluxe Spa	1 to 2	299	897	1495
1 Bedroom	1 to 2	349	1047	1745
2 Bedroom	1 to 4	439	1317	2195
3 Bedroom	1 to 6	529	1587	2645

**Children** 0 to 12 years – free when sharing with an adult and using existing bedding.

**Max capacity** Deluxe Hotel – 2, Deluxe Room/Deluxe Spa/  
1 Bedroom – 3, 2 Bedroom – 5, 3 Bedroom – 7.

PYCTAS

Quamby Estate, Hagley ◆◆◆◆◆



The homestead offers unique accommodation set in 64 hectares of English-style parkland, just 20 minutes drive from Launceston.

Town Centre 3.5km  
Map page 43 Ref. 24

1145 Westwood Road, Hagley

PROPERTY FEATURES:

- Restaurant
- Golf course (9 hole)
- Tennis court
- Guest lounge
- Internet access (wireless)
- Library
- DVD library
- Billiards table and board games
- Extensive lawns and gardens
- Parking

ACCOMMODATION FEATURES:

- Hair dryer
- Private ensuite

Room serviced daily

From \$262 PER ROOM PER NIGHT\*

1 OCT – 30 NOV 11	ADULTS	1 NT	3 NTS	5 NTS
Superior	1 to 2	262	786	1310
Deluxe	1 to 2	336	1008	1680

1 DEC 11 – 30 APR 12	ADULTS	1 NT	3 NTS	5 NTS
Superior	1 to 2	294	882	1470
Deluxe	1 to 2	368	1104	1840

1 MAY – 30 NOV 12	ADULTS	1 NT	3 NTS	5 NTS
Superior	1 to 2	314	942	1570
Deluxe	1 to 2	403	1209	2015

1 DEC 12 – 31 MAR 13	ADULTS	1 NT	3 NTS	5 NTS
Superior	1 to 2	353	1059	1765
Deluxe	1 to 2	442	1326	2210

**Includes** Light breakfast daily.

**Children** 0 to 12 years – on application.  
Deluxe – 0 to 12 years not catered for.

**Max capacity** 2.

QETLST

# Beyond Launceston

## Barnboughe Links Golf Course, Bridport ◆◆◆◆



427 Waterhouse Road, Bridport

With the addition of a second course at Barnboughe, The Lost Farm, there is all the more reason to visit this unique world class golfing destination. Located on the North East coast of Tasmania the courses have been carved from the natural undulations of the coastal dunes, mimicking mother natures' contours and resulting in courses reminiscent of the traditional layouts of Scotland and Ireland. The recipient of numerous global accolades, Barnboughe is the ultimate destination for golfers and nature enthusiasts alike.

Stay on course in either the beachside cottages or in the new Lost Farm lodge, dine on local produce in one of the two restaurants and take a quiet moment out in the Lost Farm Spa to reflect on the beauty of your surroundings.



### PROPERTY FEATURES:

- Golf course (18 hole)
- Lost Farm Spa (day spa)
- Restaurant
- Bar
- Guest laundry

### ACCOMMODATION FEATURES:

- Balcony with ocean views
- Air-conditioning
- Ironing facilities
- Tea/coffee making facilities
- Hair dryer
- All rooms non smoking

Room serviced daily  
 Beach 500m  
 Town Centre 7km  
 Map page 43 Ref. 21



From \$150 PER ROOM PER NIGHT\*



Lost Farm Lodge Room

1 - 31 OCT 11	ADULTS	1 NT	3 NTS	5 NTS
2 Bedroom Cottage	1	150	450	750
	2	170	510	850
	3	190	570	950
	4	210	630	1050
Lost Farm Lodge Room	1	170	510	850
	2	190	570	950
1 NOV 11 - 31 MAR 13	ADULTS	2 NTS	5 NTS	7 NTS
2 Bedroom Cottage	1	300	750	1050
	2	340	850	1190
	3	380	950	1330
	4	420	1050	1470
Lost Farm Lodge Room	1	340	850	1190
	2	380	950	1330

1 night stay available Lost Farm Lodge Room 1 Nov 11 - 31 Mar 12.

**Children** 0 to 2 years - cot/bed charge payable direct.  
 3 to 14 years - adult prices apply.

**Max capacity** 2 Bedroom Cottage - 4, Lost Farm Lodge Room - 2. **BARTAS**

## Launceston Highlights



Tour the highlights of Launceston and discover the Victorian streetscapes and historical architecture. Follow the tranquil yet spectacular Tamar River amongst vineyards, bird havens, country houses and fruit orchards. Visit a winery and taste from a selection of fine Tamar Valley wines.

Spend time at the picturesque Grindelwald Swiss Village and explore the historic village of Evandale, host to the Penny Farthing bike race.

### INCLUDES:

- Wine and cheese tasting
- Air-conditioned coach
- Expert driver/guide and commentary
- Return transfers from Launceston accommodation

**Departs:** Mon to Sat from Launceston Travel Centre at 1:30pm (Sep - May)

**Returns:** 5pm

PRICE PER PERSON:	1 OCT 11 - 31 MAR 12	1 APR 12 - 31 MAR 13
Adult	\$74	\$78
Child 4-14 years	\$37	\$39

EXPERIENCE TASMANIA

EXPBBA

## Trowunna Wildlife Park



Trowunna Wildlife Park at Mole Creek is situated on 60 acres of natural bushland and is home to a range of native Tasmanian wildlife, birds, insects, reptiles and animals.

On this personalised interactive tour you will learn from the passionate keepers and get close to some of the special animals of Trowunna. You can cuddle a wombat and watch the Tasmanian Devil feeding.

The keepers will also provide you with feed so you can hand feed the free-ranging kangaroos and wallabies.

**Open:** 9am - 5pm daily except Christmas Day



PRICE:	1 OCT 11 - 31 MAR 12	1 APR 12 - 31 MAR 13
Adult	\$18	\$20
Child 4-14 years	\$9	\$10
Family 2 adults and 2 children	\$50	\$50
Family 2 adults and 3 children	\$55	\$55

TROWUNNA WILDLIFE PARK

TROTAS

## Cataract Gorge Cruise



Explore the Old Launceston Seaport before cruising to Kings Wharf viewing historic vessels and Launceston's delightful riverfront precinct. The highlight of the experience is cruising into the spectacular Cataract Gorge. View the sheer cliffs and cascades from your comfortable seat with unobstructed views on Lady Launceston, an 1890s style vessel. Enjoy the skippers commentary on the history of this fascinating area.

### INCLUDES:

- 50 minute Cataract Gorge cruise
- Informative commentary

**Departs:** Daily from Launceston at 9:30am, 10:30am, 11:30am, 12:30pm, 1:30pm, 2:30pm, 3:30pm, 4:30pm (Sep - May)  
 11:30am, 12:30pm, 1:30pm (Jul - Aug)

**Duration:** 50 minutes



PRICE:	Adult	Child 5-16 years	Family 2 adults and 2 children
	\$25	\$12	\$62

Batman Bridge Luncheon and Afternoon Discovery Cruises also available.

TAMAR RIVER CRUISES

TAMLST

## Seahorse World



In the heart of the Tamar Valley at Beauty Point, just 45 minutes drive north of Launceston, Seahorse World brings to light the fascinating life of seahorses. Your personalised, friendly and informative tour offers you a close-up look at their secret world.

Your tour will include a behind the scenes look at a working seahorse farm, the Cave of the Seahorse, Neptunes Nursery, watch feeding of the fish, the Southern Ocean aquarium, hands-on opportunities in the touch pool with other interesting sea creatures and the interpretation and research room.

**Open:** 9:30am – 5:30pm daily except Christmas Day (9:30am – 3pm May – Aug)

**Tour departs:** Hourly from 10am – 3pm (May – Aug)  
Regularly from 9:30am – 3:30pm (Sep – Apr)

**Tour duration:** 45 minutes



<b>PRICE:</b>	
Adult	\$20
Child 4-16 years	\$9
Family 2 adults and unlimited children	\$50

SEAHORSE WORLD SEALST

## Platypus House



Platypus House located at Beauty Point, offers a once in a lifetime opportunity to watch both live Tasmanian platypuses and echidnas in daylight conditions and undercover. Visitors are guaranteed to see both these spectacular egg laying mammals during a 35 minute guided tour of platypus ponds and a walk through the echidna garden to see echidnas foraging in a bushland setting.

Gain insight into their habits by spending time in the Interpretation room, featuring the biology of platypuses and echidnas. Enjoy a 15 minute film in the theatre. An educational tour which you will remember for years.

**Open:** 9:30am – 3:30pm daily except Christmas Day  
Guided tours depart at regular intervals throughout the day with last tour at 3:30pm.



<b>PRICE:</b>	
Adult	\$20
Child 4-16 years	\$9
Family 2 adults and up to 3 children	\$49

PLATYPUS HOUSE PLHLST

## Beaconsfield Mine Heritage Centre



Imagine visiting a place where time stands still, where genuine smiles welcome you – a place where history is alive. Beaconsfield Mine & Heritage Centre captures the essence of life in the Tamar Valley and takes you on a journey through the Tamar's historical past.

Explore the mine rescue display and discover a replica underground mining environment. Discover over 10,000 artefacts from the Beaconsfield and Tamar Valley region in The Heritage Centre.

Be entertained by the interactive displays and live a different story around every corner. Come and play with our history!

**Open:** 9:30am – 4:30pm daily except Christmas Day and Good Friday



<b>PRICE:</b>	1 OCT 11 – 31 MAR 12	1 APR 12 – 31 MAR 13
Adult	\$11	\$12
Child 4-14 years	\$4	\$4
Family 2 adults and up to 4 children	\$28	\$30

BEACONSFIELD MINE & HERITAGE CENTRE BMHLST

## Treetops Adventure



Hollybank Treetops Adventure is unlike any other nature experience. On this unique forest canopy tour you glide through the forest along cables. Receive a bird's eye view of Tasmania's beautiful forests.

The flight is interspersed with seven tree platforms that enable you to pause between rides, share the exhilaration with other riders and take in the beauty of the forest, all without disconnecting.

The tour takes three hours, with sections soaring 50 metres above the Pipers River and for distances up to 400 metres. Hollybank Treetops Adventure is located 15 minutes north east of Launceston.

**Open:** 9am – 5pm daily except Christmas Day



<b>PRICE:</b>	1 – 31 OCT 11	1 NOV 11 – 31 MAR 13
Adult	\$80	\$100
Child 3-16 years	\$80	\$80

Not suitable for children under 3 years.

HOLLYBANK TREETOPS ADVENTURE HOLTNC

## Cradle Mountain Day Tour



Journey deep into the Tasmanian forest and awaken your senses to the splendour that is Cradle Mountain. Experience the solitary wilderness of waterfalls, glacial lakes, rainforest, wildlife and the unsurpassed beauty of this World Heritage Listed national park. Spend time at Dove Lake and Waldheim Chalet.

Stop at Ashgrove Cheese farm on the way back to Launceston. Learn about and sample some famous Tasmanian cheese.

### INCLUDES:

- Cheese tasting
- National park fees
- Modern coach travel
- Expert driver/guide and commentary
- Return transfers from Launceston accommodation

**Departs:** Mon, Wed, Fri, Sun from Launceston Travel Centre at 8:30am

**Returns:** 5pm

<b>PRICE:</b>	1 OCT 11 – 31 MAR 12	1 APR 12 – 31 MAR 13
Adult	\$164	\$168
Child 4-14 years	\$82	\$84

EXPERIENCE TASMANIA EXPHBA

## Cradle Mountain & Cradle Valley



Enjoy a full day discovering the World Heritage Cradle Mountain National Park. Witness a landscape of ancient rainforest, alpine heath lands, icy streams, cascading waterfalls, glacial lakes and a wealth of wildlife. Enjoy the Dove Lake walk or trek higher up to Marion's Lookout. Your guide will help you make the most of your day with a range of walking options to choose from.

### INCLUDES:

- Dove Lake walk
- Experienced guide
- Small group
- National park fees
- Return transfers from Launceston accommodation

**Departs:** Tue, Wed, Fri, Sun from Launceston at 8am (Oct – Jul)

**Returns:** 7pm

<b>PRICE:</b>	
Adult	\$120
Student/Pensioner	\$110

Not suitable for children under 12 years.

TOURS TASMANIA TTAHBA