



Our Favourites

Enjoy a cruise around the harbour

Drive to the summit of Mount Wellington for spectacular views of the city and harbour

Every Saturday enjoy the food and entertainment of Salamanca Market

Visit the historic town of Richmond and walk across Australia's oldest bridge

Take a Cascade Brewery tour

Submerge yourself in history at the Port Arthur Historic Site

Take a trip to Bruny Island with its abundant wildlife, natural environment and stunning views

Walk in the treetops at Tahune AirWalk

Enjoy premium cool-climate wines at wineries of the Coal River, Derwent and Huon Valleys.

Hobart

Hobart encompasses everything we love about Tasmania. It's a city that's come of age with its contemporary art, culture and dining scene. And then there's that incredible harbour that entices locals and tourists to its waters; where fishing, sailing and relaxing are common pastimes.

If you love seafood, Hobart will have you hooked. Salamanca Market is an explosion of colour and flavour, a fresh museum of local produce with an eclectic market buzz.

With so much fresh fare, Hobart's fine dining chefs are spoiled for choice, and so are you. North Hobart's renowned restaurant strip is a gourmet dream, and surrounding wine country rates highly too. Simply step outside the city to discover the Coal River, Derwent and Huon Valley wine regions.

Port Arthur

Port Arthur Historic Site is a Tasmanian landmark dating back to 1830 as a penal settlement, and it's a place that remains eerie yet beautiful. The site has over 30 buildings, ruins and restored period homes set in 40 hectares of landscaped grounds. Allow plenty of time to fully experience all that Port Arthur has to offer.

Just 10 minutes from Port Arthur is the pristine white sands of White Beach, stretching for three kilometres and west facing, experience the stunning sunsets over Storm Bay with breathtaking views all the way to Bruny Island.

Beyond Hobart

Hobart's hard to leave, but Richmond beckons, and this picture perfect town will draw you in with its 19th century Georgian buildings. Richmond is also home to Australia's oldest bridge, gaol and oldest remaining Catholic Church.

South of Hobart is fabulous Bruny Island. Beautiful beaches, tall cliffs and lush countryside make this a tranquil yet unpredictable place.

Travel on to Huonville, where more than half of Tasmania's apples are grown. This is orchard central, bursting with plums, cherries, pears and apricots – all of which are celebrated in March at the annual Taste of the Huon festival.

Walk through treetops – you can! Tahune AirWalk is a 597 metre walkway set above the Tahune Forest Reserve and its eucalypt forest, which is also home to the world's tallest flowering plant.



Hobart and Surrounds Maps

FIND YOUR ACCOMMODATION

HOBART

REF.	APARTMENTS	PAGE
24	Grosvenor Court Apartments ★★★★★	18
16	Mantra One Sandy Bay Road ◆◆◆◆	19
2	The Old Woolstore Apartment Hotel ★★★★★☆	21
17	Salamanca Inn ★★★★★☆	22
19	Salamanca Terraces ◆◆◆◆◆	22
18	Somerset on Salamanca Hobart ★★★★★	20
6	Somerset on the Pier Hobart ★★★★★☆	24
4	Zero Davey Boutique Apartments ◆◆◆◆◆	23

REF.	HOTELS	PAGE
13	Grand Mercure Hadleys Hotel ◆◆◆◆	18
5	The Henry Jones Art Hotel ◆◆◆◆◆	24
9	Hobart Tower Hotel ◆◆◆◆	17
7	Hotel Collins ◆◆◆◆◆	21
3	Hotel Grand Chancellor Hobart ★★★★★☆	21
25	The Islington Hotel ★★★★★	24
15	Leisure Inn Hobart Macquarie ★★★★★☆	17
20	Lenna of Hobart ★★★★★	19
11	The Lodge on Elizabeth ★★★★★	19
21	Mayfair Plaza Motel ★★★★★	20
12	Mercure Hobart ★★★★★	20
22	Motel 429 Sandy Bay Road ◆◆◆◆◆	17
14	Peppers Hobart ◆◆◆◆◆	22
10	Quality Hobart Midcity Hotel ★★★★★☆	17
1	Quality Hotel Hobart Airport ★★★★★	20
8	Rydges Hobart ★★★★★☆	18
23	Wrest Point ★★★★★☆	23



FIND YOUR ACCOMMODATION

BEYOND HOBART

REF.	APARTMENTS	PAGE
32	Bruny Island Explorers Cottages ★★★★★	27
27	Curringa Farm ◆◆◆◆	26
31	Driftwood Cottages ◆◆◆◆	27
34	Fox and Hounds Inn ★★★★★☆	25
33	Harpers on the Beach ◆◆◆◆	25
30	Huon Bush Retreats ◆◆◆◆	27
31	The Peninsula Experience ◆◆◆◆◆	27
34	Port Arthur Villas ★★★★★	25
34	Stewarts Bay Lodge ★★★★★☆	25

REF.	HOTELS	PAGE
28	Hatchers Richmond Manor ◆◆◆◆◆	26
26	The Priory Country Lodge ◆◆◆◆◆	26
29	Southern Lights Hotel ◆◆◆◆	26



Hobart Tower Motel ◆◆◆



Great value accommodation ideally located beside the Brooker Highway, and just a few minutes drive from the city centre.

City Centre 2.2km
Map page 16 Ref. 9

300 Park Street, New Town

PROPERTY FEATURES:

- Room service (limited)
- Guest laundry
- Parking

ACCOMMODATION FEATURES:

- Tea/coffee making facilities
- Refrigerator
- All rooms non smoking

Room serviced daily

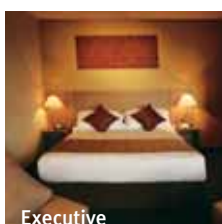
	ADULTS	1 NT	3 NTS	5 NTS
From \$78 PER ROOM PER NIGHT*				
1 OCT 11 – 30 APR 12, 20 SEP 12 – 31 MAR 13				
Budget	1 to 2	88	264	440
Standard	1 to 2	100	300	500
Family	1 to 4	136	408	680
1 MAY – 19 SEP 12				
Budget	1 to 2	78	234	390
Standard	1 to 2	90	270	450
Family	1 to 4	126	378	630

Children 0 to 2 years – cot free of charge.
3 to 14 years – \$14 per child per night when sharing with 2 adults.

Max capacity Budget – 2, Standard – 3, Family – 6.

HTMHBA

Leisure Inn Hobart Macquarie ★★★☆



Centrally located in the CBD and a leisurely walk to the waterfront and Salamanca Place. The perfect base to explore Hobart.

City Centre 750m
Map page 16 Ref. 15

167 Macquarie Street, Hobart

PROPERTY FEATURES:

- 24 hour reception
- Restaurant
- Bar
- Dry cleaning service
- Guest laundry
- Parking (limited undercover security)

ACCOMMODATION FEATURES:

- Heating
- Tea/coffee making facilities
- Cable TV
- Internet access (broadband)
- Hair dryer
- All rooms non smoking

Room serviced daily



	ADULTS	1 NT	3 NTS	5 NTS
From \$89 PER ROOM PER NIGHT*				
1 – 30 APR 12, 1 OCT – 26 DEC 12, 6 JAN – 31 MAR 13				
Express	1 to 2	153	459	765
Standard	1 to 2	180	540	900
Executive	1 to 2	213	639	1065
1 MAY – 30 SEP 12 [^]				
Express	1 to 2	133	266	532
Standard	1 to 2	153	306	612
Executive	1 to 2	183	366	732

Other prices apply 1 Oct 11 – 31 Mar 12, 27 Dec 12 – 5 Jan 13. Room and Breakfast prices also available.

Children 0 to 12 years – up to 2 children free when sharing with 2 adults and using existing bedding.

Max capacity Express/Executive – 2, Standard – 3.

LIMHBA

SUNLOVER BONUS

[^] FREE Night Offer: Stay 3 nights, pay for 2.
(3 and 5 night prices include 1 free night)

Motel 429 Sandy Bay Road ◆◆◆◇



Located on the waterfront in Sandy Bay opposite the casino and just minutes from Salamanca Market, shopping, restaurants and Hobart's CBD.

City Centre 3km
Map page 16 Ref. 22

429 Sandy Bay Road, Sandy Bay

PROPERTY FEATURES:

- Barbecue area
- Gymnasium
- Guest laundry

ACCOMMODATION FEATURES:

- Air-conditioning (except Standard)
- Heating
- Microwave
- Tea/coffee making facilities
- Cable TV
- Safe (except Standard)
- Ironing facilities
- Hair dryer

Room serviced daily

	ADULTS	1 NT	3 NTS	5 NTS
From \$130 PER ROOM PER NIGHT*				
1 OCT 11 – 31 MAR 13				
Standard/Family	1 to 2	130	390	650
Deluxe	1 to 2	160	480	800
Deluxe Waterview	1 to 2	170	510	850

3 night minimum stay applies 29 Dec 11 – 2 Jan 12, 29 Dec 12 – 2 Jan 13. Other room types also available.

Children 0 to 2 years – cot/bed charge payable direct.
3 to 15 years – adult prices apply.

Max capacity Standard/Deluxe/Deluxe Waterview – 2,
Family – 4.

MOTHBA

Quality Hobart Midcity Hotel ★★★☆



Ideally located in the CBD and just a short stroll to the famous docks and Salamanca Markets.

City Centre 100m
Map page 16 Ref. 10

Corner Elizabeth and Bathurst Streets, Hobart

PROPERTY FEATURES:

- 24 hour reception
- Restaurant
- Bar
- Room service (limited)
- Guest laundry
- Parking

ACCOMMODATION FEATURES:

- Air-conditioning
- Tea/coffee making facilities
- Internet access (wireless)
- Ironing facilities
- Hair dryer

Room serviced daily



	ADULTS	1 NT	4 NTS	7 NTS
From \$105 PER ROOM PER NIGHT*				
1 OCT 11 – 31 MAR 12 ⁺				
Studio	1 to 2	160	640	960
1 APR – 31 AUG 12 [^]				
Studio	1 to 2	140	420	840
1 SEP – 27 DEC 12, 2 JAN – 31 MAR 13 [^]				
Studio	1 to 2	160	480	960

Other prices apply 28 Dec 12 – 1 Jan 13. Standard and Superior prices also available.

Children 0 to 11 years – free when sharing with an adult and using existing bedding.

Max capacity 2.

QUAHBA

SUNLOVER BONUS

⁺ FREE Night Offer: Stay 7 nights, pay for 6.
(7 night price includes 1 free night)

[^] FREE Night Offer: Stay 4 nights, pay for 3.
(4 and 7 night prices include 1 free night)

Rydges Hobart ★★★☆



Corner Argyle and Lewis Streets, North Hobart

Rydges Hobart is a place with charm and grace where the old blends with the polish of the new. This hotel provides guests with intimacy and attention that only a small boutique property can offer.

Rydges Hobart heritage listed buildings and antique suites capture the essence of historic Hobart and provide the perfect base for exploring this city's spectacular sights.

PROPERTY FEATURES:

- 24 hour reception
- Restaurant
- Bar
- Room service (limited)
- Sauna
- Pool (outdoor)
- Internet access (wireless)
- Parking
- Guest laundry
- Non smoking

ACCOMMODATION FEATURES:

- Air-conditioning (Superior Suites)
- Limited cooking facilities
- Mini bar
- Tea/coffee making facilities
- Cable TV
- Internet access (broadband)
- Ironing facilities
- Hair dryer

Room serviced daily

City Centre 1.8km

Map page 16 Ref. 8



From **\$89** PER ROOM PER NIGHT*



1 - 31 OCT 11, 1 - 31 MAR 12 [^]	ADULTS	1 NT	4 NTS	7 NTS
Manor Twin Suite/Manor King Suite Superior Suite	1 to 2 1 to 2	140 170	420 510	840 1020
1 NOV 11 - 29 FEB 12	ADULTS	1 NT	3 NTS	5 NTS
Manor Twin Suite/Manor King Suite Superior Suite	1 to 2 1 to 2	160 190	480 570	800 950
1 APR - 31 MAY, 1 SEP - 31 OCT 12	ADULTS	1 NT	3 NTS	5 NTS
Manor Twin Suite/Manor King Suite Superior Suite	1 to 2 1 to 2	145 175	435 525	725 875
1 JUN - 31 AUG 12 ⁺	ADULTS	1 NT	3 NTS	5 NTS
Manor Twin Suite/Manor King Suite Superior Suite	1 to 2 1 to 2	133 160	266 320	532 640
1 NOV - 26 DEC 12, 3 JAN - 31 MAR 13	ADULTS	1 NT	3 NTS	5 NTS
Manor Twin Suite/Manor King Suite Superior Suite	1 to 2 1 to 2	165 195	495 585	825 975

Other prices apply 27 Dec 12 - 2 Jan 13.

Children 0 to 3 years - cot/bed charge payable direct.
4 to 12 years - up to 2 children free when sharing with 2 adults and using existing bedding.

Max capacity 4. **RYDHBA**

SUNLOVER EXCLUSIVE
FREE Tasmanian cheese tasting plate for stays of 2 nights or more.

SUNLOVER BONUS

[^] FREE Night Offer: Stay 4 nights, pay for 3.
(4 and 7 night prices include 1 free night)

⁺ FREE Night Offer: Stay 3 nights, pay for 2.
(3 and 5 night prices include 1 free night)

Offers not combinable.

Grand Mercure Hadleys Hotel ◆◆◆◆



Ideally located in the heart of Hobart's central business district within easy walking distance to the shopping precincts.

City Centre 200m
Map page 16 Ref. 13

34 Murray Street, Hobart

PROPERTY FEATURES:

- 24 hour reception
- Restaurant ■ Bar
- Room service (limited)
- Guest lounge ■ Guest laundry

ACCOMMODATION FEATURES:

- Heating
- Tea/coffee making facilities
- Mini bar ■ CD/DVD player
- Internet access (wireless)
- Ironing facilities
- Hair dryer

Room serviced daily



From **\$120** PER ROOM PER NIGHT*

1 OCT 11 - 27 DEC 11, 3 JAN - 31 MAR 12	ADULTS	1 NT	3 NTS	5 NTS
Standard	1 to 2	211	633	1055
Executive	1 to 2	231	693	1155
1 APR - 30 SEP 12	ADULTS	1 NT	2 NTS	5 NTS
Standard	1 to 2	180	360	900
Executive	1 to 2	210	420	1050
1 OCT 12 - 25 DEC 12, 2 JAN - 31 MAR 13	ADULTS	1 NT	3 NTS	5 NTS
Standard	1 to 2	200	600	1000
Executive	1 to 2	230	690	1150

Other prices apply 28 Dec 11 - 2 Jan 12, 26 Dec 12 - 1 Jan 13.
Room and Breakfast prices also available.

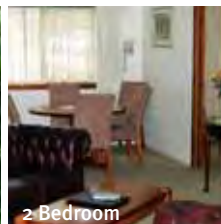
Children 0 to 15 years - up to 2 children free when sharing with 2 adults and using existing bedding.

Max capacity Standard - 2, Executive - 3. **HADHBA**

SUNLOVER BONUS

FREE Night Offer: Stay 3 nights, pay for 2, valid 1 May - 30 Sep 12.

Grosvenor Court Apartments ★★★★★



Superbly located in the quiet streets of Sandy Bay. The spacious rooms feature a blend of classic and contemporary style.

City Centre 2km
Map page 16 Ref. 24

42 Grosvenor Street, Sandy Bay

PROPERTY FEATURES:

- Room service (limited)
- Barbecue ■ DVD library
- Internet access (wireless)
- Guest laundry ■ Parking

ACCOMMODATION FEATURES:

- Heating ■ Fan ■ Electric blankets
- Kitchen with microwave
- Mini bar ■ Cable TV
- CD/DVD player
- Internet access (wireless)
- Ironing facilities
- Hair dryer
- All rooms non smoking

Room serviced daily

From **\$147** PER ROOM PER NIGHT*

22 DEC 11 - 31 MAR 12	ADULTS	1 NT	3 NTS	5 NTS
Studio	1 to 2	170	510	850
2 Bedroom	1 to 2	225	675	1125
1 APR - 31 MAY 12	ADULTS	1 NT	3 NTS	5 NTS
Studio	1 to 2	157	471	785
2 Bedroom	1 to 2	213	639	1065
1 JUN - 31 AUG 12	ADULTS	1 NT	3 NTS	5 NTS
Studio	1 to 2	147	441	735
2 Bedroom	1 to 2	203	609	1015
6 JAN - 31 MAR 13	ADULTS	1 NT	3 NTS	5 NTS
Studio	1 to 2	176	528	880
2 Bedroom	1 to 2	232	696	1160

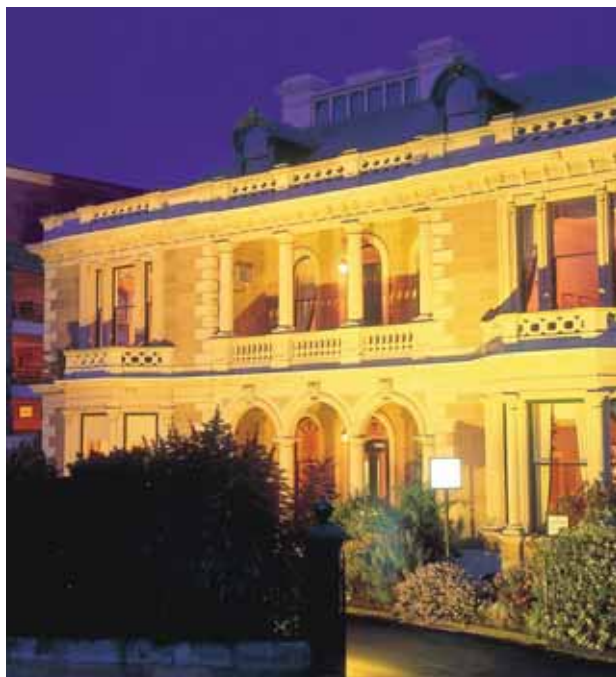
7 night minimum stay applies 22 Dec 11 - 7 Jan, 21 Dec 12 - 5 Jan 13. Other prices apply 1 Oct 11 - 21 Dec 11, 1 Sep 12 - 5 Jan 13.

Children 0 to 1 years - cot/bed charge payable direct.
2 to 14 years - adult prices apply.

Max capacity Studio - 3, 2 Bedroom - 6.

GROHBA

Lenna of Hobart ★★★★★



20 Runnymede Street, Battery Point

Lenna of Hobart is a colonial boutique hotel combining modern convenience with period elegance.

Situated right in the heart of historic Sullivan's Cove, Lenna of Hobart is adjacent to fashionable Salamanca Place and just a short walk to the waterfront and city centre.

The exclusive Lenna Penthouses are set atop the Hotel and offer 360 degree panoramic views of Hobart's harbour and mountains.

PROPERTY FEATURES:

- Restaurant
- Cocktail bar
- Room service (24 hour)
- Internet access (wireless)
- Guest laundry
- Parking

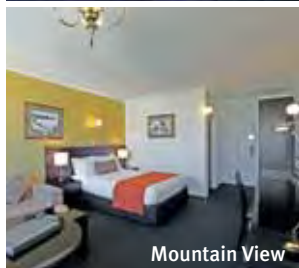
ACCOMMODATION FEATURES:

- Tea/coffee making facilities
- Mini bar
- Safe
- Cable TV
- Ironing facilities
- Hair dryer

Room serviced daily

City Centre 500m

Map page 16 Ref. 20



Mountain View



Harbour View Suite

From **\$185** PER ROOM PER NIGHT*



2 Bedroom Penthouse

1 OCT 11 – 31 MAY 12	ADULTS	1 NT	2 NTS	5 NTS
Mountain View	1 to 2	235	470	1175
Park View	1 to 2	255	510	1275
Harbour View Suite	1 to 2	350	700	1750
2 Bedroom Penthouse	1 to 4	N/A	1990	4975
1 JUN – 30 SEP 12	ADULTS	1 NT	2 NTS	5 NTS
Mountain View	1 to 2	185	370	925
Park View	1 to 2	210	420	1050
Harbour View Suite	1 to 2	295	590	1475
2 Bedroom Penthouse	1 to 4	N/A	1990	4975
1 OCT 12 – 31 MAR 13	ADULTS	1 NT	2 NTS	5 NTS
Mountain View	1 to 2	245	490	1225
Park View	1 to 2	265	530	1325
Harbour View Suite	1 to 2	360	720	1800
2 Bedroom Penthouse	1 to 4	N/A	1990	4975

4 night minimum stay applies 28 Dec 11 – 3 Jan 12, 28 Dec 12 – 3 Jan 13. Other room types also available.

Children 0 to 2 years – cot free of charge.
3 to 14 years – adult prices apply.
2 Bedroom Penthouse – 0 to 15 years not catered for.

Max capacity Mountain View/Park View – 3, Harbour View Suite – 2, 2 Bedroom Penthouse – 4.

LENHBA

SUNLOVER BONUS

\$50 food and beverage voucher per room for stays of 2 nights, or \$100 food and beverage voucher per room for stays of 3 nights or more, valid 1 May – 30 Sep 12.

The Lodge on Elizabeth ★★★★★



249 Elizabeth Street, Hobart

PROPERTY FEATURES:

- Library
- Guest lounge
- Internet access (wireless)
- Laundry/dry cleaning service
- Guest laundry
- Non smoking

ACCOMMODATION FEATURES:

- Heating
- Fan
- Tea/coffee making facilities
- Internet access (wireless and broadband)
- Spa bath (Spa room)
- Ironing facilities
- Hair dryer

Room serviced daily

Experience the grace and grandeur of this stately Georgian Mansion, located just a short stroll to restaurants and the CBD.

City Centre 800m
Map page 16 Ref. 11

From **\$130** PER ROOM PER NIGHT*

1 OCT 11 – 30 APR 12, 1 OCT 12 – 29 DEC 12, 2 JAN – 31 MAR 13	ADULTS	1 NT	3 NTS	5 NTS
Standard Ensuite	2	150	450	750
Spa Room	2	170	510	850
Cottage	1 to 2	195	585	975
Spa Twin Room	3	200	600	1000
Twin Ensuite	4	210	630	1050
1 MAY – 30 SEP 12	ADULTS	1 NT	3 NTS	5 NTS
Standard Ensuite	2	130	390	650
Spa Room	2	150	450	750
Cottage	1 to 2	170	510	850
Spa Twin Room	3	180	540	900
Twin Ensuite	4	190	570	950

Sole use prices also available. Other prices apply 30 Dec 12 – 1 Jan 13.

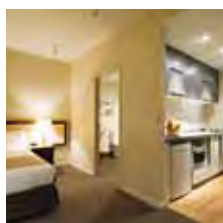
Includes Light breakfast daily.

Children 0 to 13 years – not catered for.

Max capacity Standard Ensuite/Spa Room/Cottage – 2, Spa Twin Room – 3, Twin Ensuite – 4.

LODHBA

Mantra One Sandy Bay Road ◆◆◆◆



1 Sandy Bay Road, Hobart

PROPERTY FEATURES:

- Laundry service
- Lift
- Parking (limited)

ACCOMMODATION FEATURES:

- Air-conditioning
- Limited cooking facilities with microwave
- Cable TV
- CD/DVD player
- Washer/dryer
- Ironing facilities
- All rooms non smoking

Apartment serviced weekly

Apartments located on the fringe of the Hobart CBD, within walking distance of Sullivan's Cove.

City Centre 500m
Map page 16 Ref. 13

From **\$169** PER ROOM PER NIGHT*

1 OCT – 16 DEC 11, 16 JAN – 31 MAR 12	ADULTS	1 NT	2 NTS	5 NTS
1 Bedroom	1 to 2	239	378	945
1 Bedroom Executive	1 to 2	249	398	995
1 APR – 21 DEC 12	ADULTS	1 NT	2 NTS	5 NTS
Studio	1 to 2	219	338	845
1 Bedroom	1 to 2	229	358	895
1 Bedroom Executive	1 to 2	239	378	945
6 JAN – 31 MAR 13	ADULTS	1 NT	2 NTS	5 NTS
Studio	1 to 2	229	358	895
1 Bedroom	1 to 2	239	378	945
1 Bedroom Executive	1 to 2	249	398	995

2 night minimum stay applies for Friday and Saturday night stays 1 Oct 11 – 31 Mar 12. Other prices apply 17 Dec 11 – 15 Jan 12, 22 Dec 12 – 5 Jan 13.

Children 0 to 12 years – free when sharing with an adult and using existing bedding.

Max capacity Studio – 2, 1 Bedroom/1 Bedroom Executive – 3.

MANHBA

Mayfair Plaza Motel ★★★★★



Superior

Located in a quiet oasis in the heart of Sandy Bay's dining and shopping precinct. Close to Salamanca University, casino and the city.

City Centre 1.5km
Map page 16 Ref. 21

236 Sandy Bay Road, Sandy Bay

PROPERTY FEATURES:

- Internet access (wireless)
- Guest laundry
- Dry cleaning service
- Parking (undercover)
- Non smoking

ACCOMMODATION FEATURES:

- Air-conditioning
- Fan
- Tea/coffee making facilities
- Mini bar
- Cable TV
- Hair dryer

Room serviced daily



From **\$107** PER ROOM PER NIGHT*

1 OCT 11 – 30 NOV, 1 SEP – 30 NOV 12	ADULTS	1 NT	3 NTS	5 NTS
Standard	1 to 2	156	408	635
Superior	1 to 2	164	423	680
1 – 24 DEC 11, 8 JAN – 31 MAR 12	ADULTS	1 NT	3 NTS	5 NTS
Standard	1 to 2	170	423	680
Superior	1 to 2	179	468	745
1 – 30 APR, 1 – 23 DEC 12, 8 JAN – 31 MAR 13	ADULTS	1 NT	3 NTS	5 NTS
Standard	1 to 2	170	423	680
Superior	1 to 2	184	468	745
1 MAY – 31 AUG 12	ADULTS	1 NT	3 NTS	5 NTS
Standard	1 to 2	141	363	535
Superior	1 to 2	150	408	635

Other prices apply 24 Dec 12 – 7 Jan 13.

Children 0 to 2 years – cot/bed charge payable direct.
3 to 10 years – adult prices apply.

Max capacity 2.

MAYHBA

Mercure Hobart ★★★★★



Superior

Conveniently located in the CBD and just a short walk to the city centre, restaurants, cafés, bars and Salamanca Place.

City Centre 500m
Map page 16 Ref. 12

156 Bathurst Street, Hobart

PROPERTY FEATURES:

- 24 hour reception
- Restaurant
- Bar
- Room service (24 hour)
- Parking (valet)

ACCOMMODATION FEATURES:

- Tea/coffee making facilities
- Mini bar
- Hair dryer
- In-room movies (pay to view)
- Ironing facilities
- Internet access (wireless and broadband)

Room serviced daily



From **\$113** PER ROOM PER NIGHT*

1 OCT 11 – 27 DEC 11, 3 JAN – 31 MAR 12	ADULTS	1 NT	3 NTS	5 NTS
Standard	1 to 2	190	570	950
Superior	1 to 2	210	630	1050
1 APR – 30 SEP 12 [^]	ADULTS	1 NT	3 NTS	5 NTS
Standard	1 to 2	169	338	676
Superior	1 to 2	190	380	760

Other prices available 28 Dec 11 – 2 Jan 12, 26 Dec 12 – 1 Jan 13.

Children 0 to 15 years – up to 2 children free when sharing with 2 adults and using existing bedding.

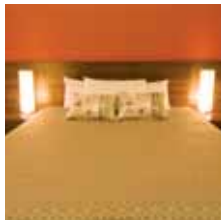
Max capacity 3.

MERHBA

SUNLOVER BONUS

[^] FREE Night Offer: Stay 3 nights, pay for 2.
(3 and 5 night prices include 1 free night)

Quality Hotel Hobart Airport ★★★★★



Quality Hotel Hobart Airport is conveniently located at the Hobart International Airport and only 15 minutes to the CBD.

City Centre 17km
Map page 16 Ref. 1

1 Holyman Avenue, Cambridge

PROPERTY FEATURES:

- Restaurant
- Bar
- Room service (limited)
- Internet access (wireless)
- Guest laundry
- Non smoking
- Courtesy shuttle to the airport

ACCOMMODATION FEATURES:

- Air-conditioning
- Mini bar
- Limited cooking facilities with microwave (1 Bedrooms)
- Tea/coffee making facilities
- Internet access (wireless)
- Ironing facilities
- Hair dryer

Room serviced daily



From **\$150** PER ROOM PER NIGHT*

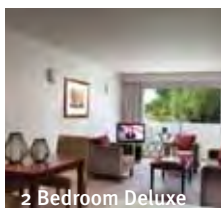
1 OCT 11 – 31 MAR 12	ADULTS	1 NT	3 NTS	5 NTS
Studio	1 to 2	160	480	800
1 Bedroom	1 to 2	190	570	950
1 – 5 APR, 10 APR – 30 SEP 12	ADULTS	1 NT	3 NTS	5 NTS
Studio	1 to 2	150	450	750
1 Bedroom	1 to 2	181	543	905
6 – 9 APR, 1 OCT 12 – 31 MAR 13	ADULTS	1 NT	3 NTS	5 NTS
Studio	1 to 2	179	537	895
1 Bedroom	1 to 2	207	621	1035

Children 0 to 2 years – cot/bed charge payable direct.
3 to 14 years – adult prices apply.

Max capacity Studio – 2, 1 Bedroom – 4.

QHQBHA

Somerset on Salamanca Hobart ★★★★★



2 Bedroom Deluxe

Situated just metres from the Salamanca Market and the waterfront, with spacious, private residences furnished with contemporary décor.

City Centre 100m
Map page 16 Ref. 18

8 Salamanca Place, Hobart

PROPERTY FEATURES:

- Laundry/dry cleaning service
- Charge back facility at selected local restaurants
- Parking (limited)

ACCOMMODATION FEATURES:

- Air-conditioning/heating
- Balcony or courtyard
- Cable TV
- Kitchen (2 Bedrooms)
- CD/DVD player
- Limited cooking facilities (Studio Executives)
- Internet access (broadband)
- Washer/dryer
- Ironing facilities

Room serviced daily (except Sunday and public holidays)



From **\$157** PER ROOM PER NIGHT*

1 OCT 11 – 25 DEC 11, 4 JAN 12 – 31 MAR 12	ADULTS	1 NT	3 NTS	5 NTS
Studio Executive	1 to 2	215	645	1075
2 Bedroom Deluxe	1 to 4	325	975	1625
1 – 30 APR, 1 OCT 12 – 25 DEC 12, 4 JAN 13 – 7 FEB, 12 FEB – 31 MAR 13	ADULTS	1 NT	3 NTS	5 NTS
Studio Executive	1 to 2	235	705	1175
2 Bedroom Deluxe	1 to 4	345	1035	1725
1 MAY – 30 SEP 12	ADULTS	1 NT	3 NTS	5 NTS
Studio Executive	1 to 2	195	471	861
2 Bedroom Deluxe	1 to 4	255	690	1200

2 Bedroom Executive prices also available.

Children 0 to 12 years – free when sharing with an adult and using existing bedding. Cot free of charge.

Max capacity Studio Executive – 3, 2 Bedroom Deluxe – 5.

SOSHBA

Hotel Collins ◆◆◆◆◆



58 Collins Street, Hobart

Hotel Collins is located between the CBD and the historic waterfront of Hobart and offers a choice of apartment style or modern hotel accommodation.

The hotel offers views to Mount Wellington, over Hobart city and the Queen's Domain. Hotel Collins is the perfect choice for your Tasmanian experience.

PROPERTY FEATURES:

- 24 hour reception
- Restaurant
- Bar
- Room service (24 hour)
- Business services
- Internet lounge
- Guest laundry
- Dry cleaning service
- Parking

ACCOMMODATION FEATURES:

- Air-conditioning
- Mini bar
- Tea/coffee making facilities
- In-room movies (free)
- iPod docking station
- Internet access (broadband – free)
- Ironing facilities
- Hair dryer
- All rooms non smoking

Room serviced daily

City Centre 100m
Map page 16 Ref. 7



From **\$180** PER ROOM PER NIGHT*



2 Bedroom

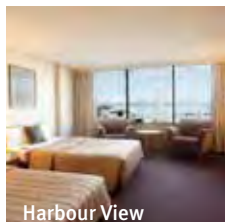
1 OCT 11 – 30 SEP 12	ADULTS	1 NT	3 NTS	5 NTS
Queen	1 to 2	180	540	900
King/Club	1 to 2	190	570	950
1 Bedroom	1 to 2	260	780	1300
2 Bedroom	1 to 4	399	1197	1995
1 OCT 12 – 31 MAR 13	ADULTS	1 NT	3 NTS	5 NTS
Queen	1 to 2	225	675	1125
King/Club	1 to 2	245	735	1225
1 Bedroom	1 to 2	335	1005	1675
2 Bedroom	1 to 4	485	1455	2425

Children 0 to 2 years – cot free of charge.
3 to 14 years – adult prices apply.

Max capacity Queen/King/Club – 2, 1 Bedroom – 3,
2 Bedroom – 5.

HOCHBA

Hotel Grand Chancellor Hobart ★★★★★



Overlooks one of the world's most iconic harbours with views of either Mt Wellington and the city or the Derwent River and Constitution Dock.

City Centre 150m
Map page 16 Ref. 3

1 Davey Street, Hobart

PROPERTY FEATURES:

- 24 hour reception
- Restaurant
- Bar
- Room service (24 hour)
- Pool (heated indoor)
- Sauna
- Gymnasium
- Parking

ACCOMMODATION FEATURES:

- Air-conditioning
- Tea/coffee making facilities
- Mini bar
- In-room movies (pay to view)
- Internet access (broadband)
- Ironing facilities
- Hair dryer

Room serviced daily



From **\$199** PER ROOM PER NIGHT*

1 OCT 11 – 30 NOV 11, 1 – 31 MAR 12	ADULTS	1 NT	3 NTS	5 NTS
Mountain Side	1 to 2	207	621	1035
Harbour View	1 to 2	253	759	1265
1 APR – 31 MAY 12, 3 JAN – 31 MAR 13	ADULTS	1 NT	3 NTS	5 NTS
Mountain Side	1 to 2	247	741	1235
Harbour View	1 to 2	293	879	1465
1 JUN – 31 AUG 12	ADULTS	1 NT	3 NTS	5 NTS
Mountain Side	1 to 2	199	597	995
Harbour View	1 to 2	245	735	1225
1 SEP 12 – 25 DEC 12	ADULTS	1 NT	3 NTS	5 NTS
Mountain Side	1 to 2	213	639	1065
Harbour View	1 to 2	260	780	1300

Other prices apply 1 Dec 11 – 29 Feb 12, 26 Dec 12 – 2 Jan 13. Other room types also available.

Children 0 to 12 years – free when sharing with 2 adults and using existing bedding.

Max capacity 3 adults or 2 adults/2 children.

HGCHBA

The Old Woolstore Apartment Hotel ★★★★★



Conveniently located in the Sullivan's Cove area of Hobart, a short stroll from the city centre, Salamanca Place and the Botanical Gardens.

City Centre 500m
Map page 16 Ref. 2

1 Macquarie Street, Hobart

PROPERTY FEATURES:

- 24 hour reception
- Restaurant
- Bar
- Room service (24 hour)
- Gymnasium
- Dry cleaning service

ACCOMMODATION FEATURES:

- Air-conditioning
- Cable TV
- Mini bar
- Kitchen with microwave and dishwasher (1 Bedrooms)
- Tea/coffee making facilities
- Internet access (wireless)
- Laundry (1 Bedrooms)
- Ironing facilities
- Hair dryer

Room serviced daily



From **\$217** PER ROOM PER NIGHT*

1 OCT 11 – 31 MAR 12	ADULTS	1 NT	3 NTS	5 NTS
Hotel	1 to 2	239	717	1195
Studio	1 to 2	269	807	1345
1 Bedroom	1 to 2	289	867	1445
1 APR 12 – 31 MAR 13	ADULTS	1 NT	3 NTS	5 NTS
Studio	1 to 2	289	867	1445
1 Bedroom	1 to 2	309	927	1545

3 night minimum stay applies 28 Dec 11 – 3 Jan 12, 28 Dec 12 – 3 Jan 13. Executive Spa and 2 Bedroom prices also available.

Includes Full breakfast daily.

Children 0 to 2 years – cot free of charge.
3 to 14 years – adult prices apply.

Max capacity Hotel – 4, Studio/1 Bedroom – 2.

OLDHBA

SUNLOVER BONUS

FREE Night Offer: Stay 4 nights, pay for 3, valid 1 May – 30 Sep 12.

Peppers Hobart ◆◆◆◆◇



Hobart Waterfront



Artist Impression

New hotel, located in the heart of the Hobart CBD, stunning modern design incorporating the heritage listed original Cascade Brewery buildings.

City Centre 20m
Map page 16 Ref. 14

154 – 156 Collins Street, Hobart

PROPERTY FEATURES:

- 24 hour reception ■ Restaurant
- Café ■ Bar ■ Room service (24 hour)
- Guest lounge ■ Massage facilities
- Internet access (wireless) ■ Non smoking
- Parking (undercover security)

ACCOMMODATION FEATURES:

- Air-conditioning ■ Fan
- Limited cooking facilities
- In-room movies (pay to view)
- CD/DVD player ■ iPod docking station
- Bathrobes ■ Ironing facilities ■ Hair dryer

Room serviced daily



From **\$229** PER ROOM PER NIGHT*

1 – 30 APR, 1 SEP – 21 DEC 12, 6 JAN – 31 MAR 13	ADULTS	1 NT	3 NTS	5 NTS
Studio	1 to 2	269	807	1345
1 Bedroom	1 to 2	309	927	1545
2 Bedroom Interconnecting	1 to 4	409	1227	2045
1 MAY – 31 AUG 12	ADULTS	1 NT	3 NTS	5 NTS
Studio	1 to 2	229	687	1145
1 Bedroom	1 to 2	269	807	1345
2 Bedroom Interconnecting	1 to 4	369	1107	1845
22 DEC 12 – 5 JAN 13	ADULTS	3 NTS	5 NTS	7 NTS
Studio	1 to 2	1197	1995	2793
1 Bedroom	1 to 2	1317	2195	3073
2 Bedroom Interconnecting	1 to 4	1617	2695	3773

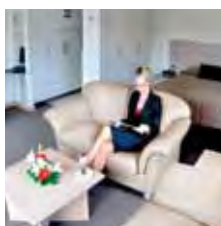
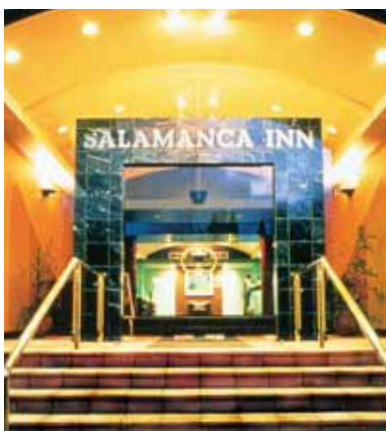
Other prices apply 1 Oct 11 – 31 Mar 12. Other room types also available.

Children 0 to 12 years – free when sharing with an adult and using existing bedding. Cot free of charge.

Max capacity Studio/1 Bedroom – 2, 2 Bedroom Interconnecting – 4.

PEPHBA

Salamanca Inn ★★★★★



Spacious suite style accommodation perfectly located adjoining the colourful waterfront precinct of Hobart.

City Centre 500m
Map page 16 Ref. 17

10 Gladstone Street, Hobart

PROPERTY FEATURES:

- 24 hour reception
- Restaurant
- Room service (limited)
- Bar ■ Pool (heated) ■ Spa
- Guest laundry
- Parking (undercover)

ACCOMMODATION FEATURES:

- Mini bar
- Kitchen with microwave and dishwasher
- In-room movies (free)
- Internet access (wireless)
- Safe ■ Hair dryer
- Ironing facilities

Apartment serviced daily

From **\$199** PER ROOM PER NIGHT*

1 OCT 11 – 26 DEC 11, 5 JAN – 31 MAR 12	ADULTS	1 NT	2 NTS	5 NTS
Queen Suite	1 to 2	209	418	1045
Family Four Suite	1 to 4	280	560	1400
1 – 30 APR, 1 OCT 12 – 26 DEC 12, 5 JAN – 6 FEB, 12 FEB – 31 MAR 13	ADULTS	1 NT	3 NTS	5 NTS
Queen Suite	1 to 2	239	717	1195
Family Four Suite	1 to 4	319	957	1595
1 MAY – 30 SEP 12	ADULTS	1 NT	3 NTS	5 NTS
Queen Suite	1 to 2	199	597	995
Family Four Suite	1 to 4	266	798	1330

Other prices apply 27 Dec 11 – 4 Jan 12, 27 Dec 12 – 4 Jan, 7 – 11 Feb 13.

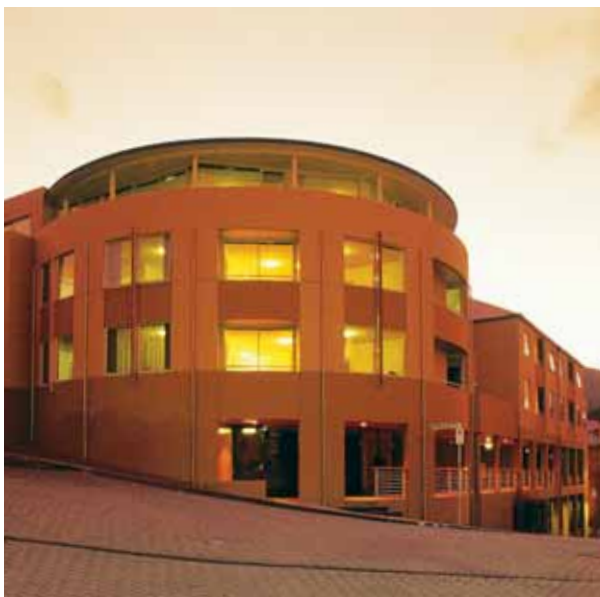
Children 0 to 2 years – cot/bed charge payable direct. 3 to 14 years – adult prices apply.

Max capacity Queen Suite – 2, Family Four Suite – 4. SAAHBA

SUNLOVER BONUS

FREE light breakfast for 2 adults daily for stays in a Queen Suite, valid 1 Jun – 31 Aug 12.

Salamanca Terraces ◆◆◆◆◇



93 Salamanca Place, Hobart

Salamanca Terraces is superbly situated on the eastern end of Salamanca Place and close to restaurants and art galleries. Enjoy fully self-contained apartments plus use of the comprehensive facilities at Lenna of Hobart, located opposite the hotel. The renowned Salamanca Market is held every Saturday just metres from your apartment.

PROPERTY FEATURES:

- 24 hour reception
- Restaurant
- Café ■ Bar
- Room service (24 hour)
- Internet facilities
- Guest laundry
- Dry cleaning service
- Lift ■ Parking
- Non smoking

ACCOMMODATION FEATURES:

- Limited cooking facilities with microwave (Hotel Studios)
- Kitchen with microwave (1 and 2 Bedrooms)
- Mini bar
- Cable TV
- Internet access (broadband)
- Washer/dryer (1 and 2 Bedrooms)
- Ironing facilities
- Hair dryer

Room serviced daily

City Centre 1.5km
Map page 16 Ref. 19



From **\$185** PER ROOM PER NIGHT*



1 Bedroom

1 OCT 11 – 31 MAY 12	ADULTS	1 NT	4 NTS	5 NTS
Hotel Studio	1 to 2	235	940	1175
1 Bedroom	1 to 2	270	1080	1350
2 Bedroom Townhouse	1 to 4	350	1400	1750
1 JUN – 30 SEP 12	ADULTS	1 NT	3 NTS	5 NTS
Hotel Studio	1 to 2	185	555	925
1 Bedroom	1 to 2	215	645	1075
2 Bedroom Townhouse	1 to 4	295	885	1475
1 OCT 12 – 31 MAR 13	ADULTS	1 NT	4 NTS	5 NTS
Hotel Studio	1 to 2	245	980	1225
1 Bedroom	1 to 2	280	1120	1400
2 Bedroom Townhouse	1 to 4	360	1440	1800

4 night minimum stay applies 28 Dec 11 – 3 Jan 12, 28 Dec 12 – 3 Jan 13. 1 Bedroom Penthouse prices also available.

Children 0 to 2 years – cot free of charge. 3 to 14 years – adult prices apply.

Max capacity Hotel Studio – 2, 1 Bedroom – 2 adults/1 child, 2 Bedroom Townhouse – 5.

SALHBA

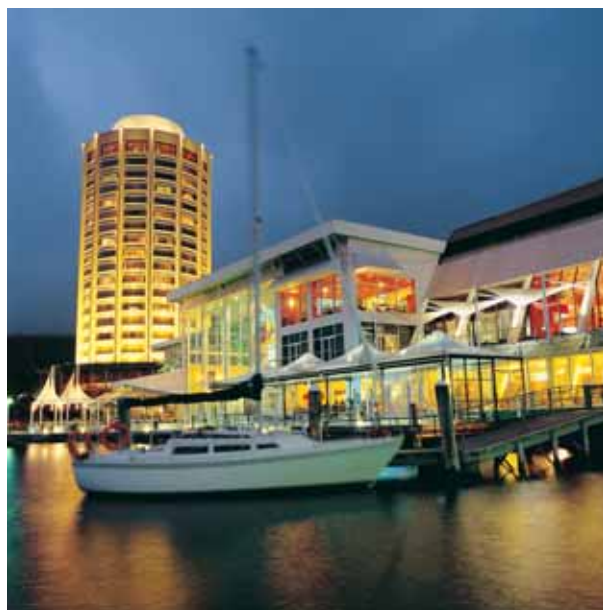
SUNLOVER BONUS

\$50 food and beverage voucher per room for stays of 2 nights, or \$100 food and beverage voucher per room for stays of 3 nights or more, valid 1 May – 30 Sep 12.



2 Bedroom Townhouse

Wrest Point ★★★★★



410 Sandy Bay Road, Sandy Bay

Absolute waterfront location on the sparkling River Derwent, offering hotel style accommodation, fine dining and million dollar views from the window of every room. Wrest Point is the perfect choice for a memorable stay in Hobart.

With four restaurants and six bars you'll find a place for every taste and mood. Sip a local pinot and watch the yachts on the harbour.

PROPERTY FEATURES:

- 24 hour reception
- Restaurants (4)
- Room service (24 hour)
- Bars (6)
- Casino
- Massage facilities
- Conference and Entertainment venue
- Pool (heated indoor)
- Spa ■ Sauna
- Tennis court ■ Gymnasium
- Mini golf ■ Lift
- Parking

ACCOMMODATION FEATURES:

- Air-conditioning
- Tea/coffee making facilities
- In-room movies (free)
- Internet access (broadband)
- Ironing facilities ■ Hair dryer

Room serviced daily

Mountain Side ★★★★★

Water Edge ★★★★★

City Centre 3km

Map page 16 Ref. 23



From **\$129** PER ROOM PER NIGHT*



Standard Harbour View

1 OCT – 20 DEC 11	ADULTS	1 NT	3 NTS	5 NTS
Mountain Side	1 to 2	129	387	645
Water Edge	1 to 2	153	459	765
Standard Mountain View	1 to 2	177	531	885
Standard Harbour View	1 to 2	189	567	945
21 – 28 DEC 11, 4 JAN – 20 APR, 24 – 30 APR 12	ADULTS	1 NT	3 NTS	5 NTS
Mountain Side	1 to 2	151	453	755
Water Edge	1 to 2	178	534	890
Standard Mountain View	1 to 2	205	615	1025
Standard Harbour View	1 to 2	218	654	1090
1 MAY – 20 DEC 12	ADULTS	1 NT	3 NTS	5 NTS
Mountain Side	1 to 2	135	405	675
Water Edge	1 to 2	159	477	795
Standard Mountain View	1 to 2	183	549	915
Standard Harbour View	1 to 2	195	585	975
21 – 28 DEC 12, 4 JAN – 31 MAR 13	ADULTS	1 NT	3 NTS	5 NTS
Mountain Side	1 to 2	157	471	785
Water Edge	1 to 2	184	552	920
Standard Mountain View	1 to 2	210	630	1050
Standard Harbour View	1 to 2	224	672	1120

Other prices apply 29 Dec 11 – 3 Jan, 21 – 23 Apr, 29 Dec 12 – 3 Jan 13. Other room types also available.

Children 0 to 14 years – free when sharing with an adult and using existing bedding. Cot free of charge.

Max capacity Mountain Side/Water Edge – 3, Standard Mountain View/Standard Harbour View – 4. **WREHBA**

Zero Davey Boutique Apartments ◆◆◆◆◆



15 Hunter Street, Hobart

Located in the historic port of Hobart, the apartments offer a fresh and contemporary experience to guests. From the futuristic foyer to the funky studios and apartments, Zero Davey is perfect for lovers of modern style, and the CBD and Salamanca Markets are right on the doorstep.

All apartments are equipped with plasma screen TVs, kitchen, wireless internet access, laundry and some with spas. The property also boasts a sauna, mini-gym, secure undercover car parking and lifts.

PROPERTY FEATURES:

- Exercise equipment
- Sauna
- Laundry/dry cleaning service
- Lift
- Parking (undercover security)

ACCOMMODATION FEATURES:

- Air-conditioning/heating
- Balcony (except Deluxe Davey Studios)
- Kitchen with microwave
- Internet access (wireless)
- iPod docking station
- Laundry
- 2 bathrooms in 2 and 3 Bedrooms
- Spa bath (2 and 3 Bedrooms)
- Safe
- Hair dryer

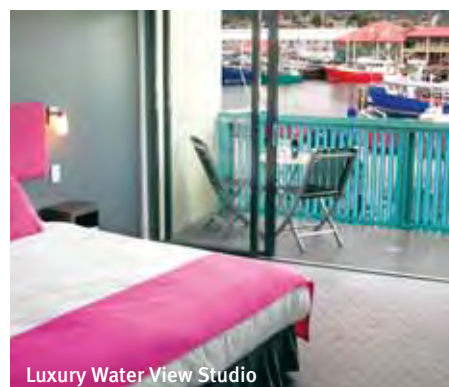
Room serviced daily (except Sunday)

City Centre 50m

Map page 16 Ref. 4



From **\$195** PER ROOM PER NIGHT*



Luxury Water View Studio

1 OCT 11 – 31 MAR 12	ADULTS	1 NT	2 NTS	5 NTS
Deluxe Davey Studio	1 to 2	271	542	1355
Luxury Water View Studio	1 to 2	340	680	1700
2 Bedroom	1 to 4	N/A	1024	2560
3 Bedroom	1 to 6	N/A	1300	3250
1 APR – 30 SEP 12	ADULTS	1 NT	2 NTS	5 NTS
Deluxe Davey Studio	1 to 2	195	390	975
Luxury Water View Studio	1 to 2	285	570	1425
2 Bedroom	1 to 4	N/A	830	2075
3 Bedroom	1 to 6	N/A	1088	2720
1 OCT 12 – 31 MAR 13	ADULTS	1 NT	2 NTS	5 NTS
Deluxe Davey Studio	1 to 2	271	542	1355
Luxury Water View Studio	1 to 2	340	680	1700
2 Bedroom	1 to 4	N/A	960	2400
3 Bedroom	1 to 6	N/A	1300	3250

Children 0 to 2 years – cot/bed charge payable direct. 3 to 14 years – adult prices apply.

Max capacity Deluxe Davey Studio/Luxury Water View Studio – 2, 2 Bedroom – 4, 3 Bedroom – 6. **ZERHBA**



SUNLOVER EXCLUSIVE

FREE bottle of Tasmanian wine in your room on arrival.

Hobart

Somerset on the Pier Hobart ★★★★★☆



Located on Elizabeth Street Pier, directly on Hobart's waterfront and historic Sullivan's Cove, close to restaurants, bars and cafés.

City Centre 100m
Map page 16 Ref. 6

Elizabeth Street, Hobart

PROPERTY FEATURES:

- 24 hour reception
- Restaurant ■ Café
- Bar ■ Room service (limited)
- DVD library (free)
- Parking (limited)

ACCOMMODATION FEATURES:

- Air-conditioning ■ Water views
- Kitchen ■ Cable TV
- CD/DVD player ■ iPod docking station
- Internet access (wireless)
- Ironing facilities ■ Washer/dryer
- Hair dryer ■ Safe

Apartment serviced daily (except Sunday and public holidays)

From **\$181** PER ROOM PER NIGHT*

1 OCT 11 – 25 DEC 11, 4 JAN – 31 MAR 12	ADULTS	1 NT	3 NTS	5 NTS
1 Bedroom Executive	1 to 2	245	735	1225
2 Bedroom Executive	1 to 4	311	933	1555
1 – 30 APR, 1 OCT 12 – 25 DEC 12, 4 JAN – 7 FEB, 12 FEB – 31 MAR 13	ADULTS	1 NT	3 NTS	5 NTS
1 Bedroom Executive	1 to 2	271	813	1355
2 Bedroom Executive	1 to 4	351	1053	1755
1 MAY – 30 SEP 12	ADULTS	1 NT	3 NTS	5 NTS
1 Bedroom Executive	1 to 2	217	543	975
2 Bedroom Executive	1 to 4	251	705	1205

Children 0 to 12 years – free when sharing with an adult and using existing bedding. Cot free of charge.

Max capacity 1 Bedroom Executive – 3, 2 Bedroom Executive – 5.
SOMHBA

The Islington Hotel ★★★★★



A magnificent urban luxury lodge comprising 11 stylish guest rooms showcasing an eclectic mix of a bygone era with contemporary elements.

City Centre 2km
Map page 16 Ref. 25

321 Davey Street, Hobart

PROPERTY FEATURES:

- Bar ■ Guest lounge ■ Wine cellar
- Business services ■ Library ■ Non smoking
- Glass conservatory ■ Massage facilities
- Laundry/dry cleaning service
- Internet access (wireless) ■ Parking

ACCOMMODATION FEATURES:

- Air-conditioning ■ Patio ■ Cable TV
- Tea/coffee making facilities ■ Mini bar
- CD/DVD player ■ Ironing facilities
- Internet access (wireless - free)
- Bathrobes ■ Hair dryer

Room serviced daily



From **\$300** PER ROOM PER NIGHT*

1 OCT 11 – 31 MAR 12	ADULTS	1 NT	3 NTS	5 NTS
Attic	1 to 2	350	1050	1750
Garden	1 to 2	400	1200	2000
Regency	1 to 2	500	1500	2500
1 APR – 30 SEP 12	ADULTS	1 NT	2 NTS	5 NTS
Attic	1 to 2	300	600	1500
Garden	1 to 2	350	700	1750
Regency	1 to 2	450	900	2250
1 OCT 12 – 31 MAR 13	ADULTS	1 NT	3 NTS	5 NTS
Attic	1 to 2	370	1110	185
Garden	1 to 2	420	1260	2100
Regency	1 to 2	520	1560	2600

Signature room prices also available.

Includes Full breakfast daily.

Children 0 to 15 years – not catered for.

Max capacity 2.

ISHHBA

The Henry Jones Art Hotel ◆◆◆◆◆



25 Hunter Street, Hobart

Australia's first dedicated art hotel stands proudly on Hobart's glorious waterfront. A handsome row of historic warehouses and former IXL jam factory dating from the 1820s have been creatively transformed into an enthralling first class hotel showcasing the work of Tasmania's finest visual artists. The hotel is itself a fusion of art, heritage, technology and tradition.

Located on Hobart's Victoria dock, most of the 56 rooms have harbour and water views where you can watch fishing trawlers slip quietly into view just beneath your window, while others overlook the stunning glass atrium and reveal glimpses of the old jam factory interior.

PROPERTY FEATURES:

- The Atrium ■ 24 hour reception ■ Bar
- Restaurant ■ Room service (limited)
- Café ■ Henry Jones Design Studio
- Massage and beauty facilities
- Guest laundry ■ Parking (undercover)

ACCOMMODATION FEATURES:

- Air-conditioning ■ Mini bar
- Tea/coffee making facilities
- Spa (except Standard rooms)
- CD/DVD player ■ Cable TV
- Internet access (broadband)
- Ironing facilities
- Hair dryer

Room serviced daily

City Centre 500m
Map page 16 Ref. 5



From **\$277** PER ROOM PER NIGHT*



1 OCT 11 – 24 DEC 11, 5 JAN – 26 SEP, 29 – 30 SEP 12	ADULTS	1 NT	3 NTS	5 NTS
Standard	1 to 2	277	831	1385
Standard Harbour View	1 to 2	345	1035	1725
Deluxe Spa Harbour View	1 to 2	387	1161	1935
1 OCT 12 – 24 DEC 12, 5 JAN – 31 MAR 13	ADULTS	1 NT	3 NTS	5 NTS
Standard	1 to 2	318	954	1590
Standard Harbour View	1 to 2	392	1176	1960
Deluxe Spa Harbour View	1 to 2	444	1332	2220
25 DEC 12 – 4 JAN 13	ADULTS	1 NT	3 NTS	5 NTS
Standard	1 to 2	340	1020	1700
Standard Harbour View	1 to 2	420	1260	2100
Deluxe Spa Harbour View	1 to 2	475	1425	2375

Other prices apply 27 – 28 Sep 12.

Children 0 to 4 years – cot/ bed charge payable direct.
5 to 14 years – adult prices apply.

Max capacity 3.

HENHBA

Fox and Hounds Inn, Port Arthur ★★★☆



Situated on a beautiful waterfront in bush surrounds, just one minute from the historic site of Port Arthur.

Town Centre 1km
Map page 16 Ref. 34

6789 Arthur Highway, Port Arthur

PROPERTY FEATURES:

- Restaurant ▪ Bar
- Room service (limited)
- Bottle shop ▪ Tennis court
- Children's playground
- Safety deposit box
- Guest laundry
- Parking
- Non smoking

ACCOMMODATION FEATURES:

- Heating ▪ Electric blankets
- Tea/coffee making facilities
- Mini bar ▪ Ironing facilities
- Hair dryer

Room serviced daily

From **\$165** PER ROOM PER NIGHT*

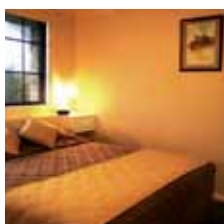
1 OCT 11 – 30 APR 12	ADULTS	1 NT	3 NTS	5 NTS
Motel	1 to 2	180	540	900
1 Bedroom	1 to 2	200	600	1000
2 Bedroom	1 to 4	240	720	1200
1 MAY – 30 SEP 12	ADULTS	1 NT	3 NTS	5 NTS
Motel	1 to 2	165	495	825
1 Bedroom	1 to 2	190	570	950
2 Bedroom	1 to 4	215	645	1075
1 OCT 12 – 31 MAR 13	ADULTS	1 NT	3 NTS	5 NTS
Motel	1 to 2	185	555	925
1 Bedroom	1 to 2	200	600	1000
2 Bedroom	1 to 4	245	735	1225

Children 0 to 2 years – cot free of charge.
3 to 14 years – adult prices apply.

Max capacity Motel – 3, 1 Bedroom – 2, 2 Bedroom – 4.

FOXP

Port Arthur Villas ★★★★★



Spacious self-contained accommodation located adjacent to Port Arthur Historic Site and close to surrounding beaches.

Town Centre 1km
Map page 16 Ref. 34

52 Safety Cove Road, Port Arthur

PROPERTY FEATURES:

- Barbecue area
- DVD library
- Guest lounge
- Children's playground
- Guest laundry
- Internet facilities
- Non smoking ▪ Parking

ACCOMMODATION FEATURES:

- Air-conditioning ▪ Balcony
- Mini bar ▪ Kitchen with microwave
- Tea/coffee making facilities
- Cable TV ▪ DVD player
- Ironing facilities ▪ Hair dryer

Apartment serviced weekly

From **\$135** PER ROOM PER NIGHT*

1 OCT 11 – 31 MAR 12	ADULTS	1 NT	2 NTS	5 NTS
Studio	1 to 2	170	310	775
1 Bedroom	1 to 2	180	360	900
2 Brm Family/2 Brm Family Large	1 to 2	200	400	1000
1 – 4 APR, 11 – 30 APR, 1 SEP – 23 DEC 12, 1 FEB – 28 MAR 13	ADULTS	1 NT	2 NTS	5 NTS
Studio	1 to 2	175	320	800
1 Bedroom	1 to 2	185	350	875
2 Brm Family/2 Brm Family Large	1 to 2	205	410	1025
1 MAY – 31 AUG 12	ADULTS	1 NT	2 NTS	5 NTS
Studio	1 to 2	150	270	675
1 Bedroom	1 to 2	160	300	750
2 Brm Family/2 Brm Family Large	1 to 2	175	350	875

Other prices apply 5 – 10 Apr, 24 Dec 12 – 31 Jan, 29 – 31 Mar 13.
2 Bedroom Companion prices also available.

Children 0 to 1 years – cot/bed charge payable direct.
2 to 14 years – \$15 per child per night.

Max capacity Studio – 3, 1 Bedroom – 2, 2 Bedroom Family – 4,
2 Bedroom Family Large – 5.

PAV

Stewarts Bay Lodge, Port Arthur ★★★★★☆



A unique waterfront escape located next to Port Arthur Historic Site in one of Tasmania's most beautiful natural settings.

Town Centre 100m
Map page 16 Ref. 34

6955 Arthur Highway, Port Arthur

PROPERTY FEATURES:

- Tennis ▪ Spa
- Barbecue area ▪ Guest laundry
- Parking

ACCOMMODATION FEATURES:

- Balcony ▪ Heating
- Kitchen with microwave
- CD/DVD player
- Washer/dryer
- Hair dryer

Cabin not serviced during stay (linen change mid stay for stays of 3 nights or more)



From **\$175** PER ROOM PER NIGHT*

1 OCT 11 – 23 DEC 11	ADULTS	1 NT	3 NTS	5 NTS
1 Bedroom Cabin	1 to 2	185	555	925
2 Bedroom Cabin	1 to 4	210	630	1050
24 DEC 11 – 31 MAR 12	ADULTS	1 NT	3 NTS	5 NTS
1 Bedroom Cabin	1 to 2	220	660	1100
2 Bedroom Cabin	1 to 4	315	945	1575
1 APR 12 – 24 DEC 12	ADULTS	1 NT	2 NTS	5 NTS
1 Bedroom Cabin	1 to 2	215	350	875
2 Bedroom Cabin	1 to 4	280	460	1150
25 DEC 12 – 31 MAR 13	ADULTS	1 NT	2 NTS	5 NTS
1 Bedroom Cabin	1 to 2	235	400	1000
2 Bedroom Cabin	1 to 4	350	560	1400

2 night minimum stay applies 30 Dec 11 – 1 Jan, 25 Dec 12 – 3 Jan, 29 – 31 Mar 13. Premium Spa Cabin prices also available.

Children 0 to 2 years – cot free of charge.
3 to 14 years – adult prices apply.

Max capacity 1 Bedroom Cabin – 2, 2 Bedroom Cabin – 5.

STEP

Harpers on the Beach, White Beach ◆◆◆◆



Offering beachfront accommodation, just 10 minutes from the Port Arthur Historic Site, with spectacular views of the ocean.

Town Centre 4km
Map page 16 Ref. 33

8 Harpers Place, White Beach

PROPERTY FEATURES:

- Guest lounge
- DVD library
- Internet access (wireless)
- Parking

ACCOMMODATION FEATURES:

- Balcony ▪ Bathrobes
- Kitchen with microwave (Beach Cottages)
- Tea/coffee making facilities
- Mini bar (Beachfronts and Standards)
- Hair dryer
- All rooms non smoking

Standard/Beachfront serviced daily
Beach Cottage not serviced

From **\$144** PER ROOM PER NIGHT*

1 APR – 19 DEC 12, 31 JAN – 31 MAR 13	ADULTS	1 NT	3 NTS	5 NTS
Standard	2	180	540	720
Beach Cottage	1 to 2	180	540	720
Beachfront	2	200	600	800
20 DEC 12 – 30 JAN 13	ADULTS	2 NTS	3 NTS	5 NTS
Standard	2	400	600	800
Beach Cottage	1 to 2	440	660	880
Beachfront	2	480	720	960

Other prices apply 1 Oct 11 – 31 Mar 12.

Includes Standard and Beachfront rooms include full breakfast daily.

Children 0 to 12 years – not catered for.

Max capacity Beach Cottage – 4, Standard/Beachfront – 2.

HAR

SUNLOVER BONUS

FREE Night Offer: Stay 5 nights, pay for 4.
(5 night price includes 1 free night)

Beyond Hobart

Hatchers Richmond Manor, Richmond ◆◆◆◆◆



Family accommodation set on a 100 acre working farm and orchard on the beautiful Coal River, only 20 minutes from Hobart.

Town Centre 1km
Map page 16 Ref. 28

73 Prossers Road, Richmond

PROPERTY FEATURES:

- Restaurant ■ Bar ■ DVD library
- Internet access (wireless)
- Guest laundry ■ Parking

ACCOMMODATION FEATURES:

- Kitchen with microwave and dishwasher (Cottages)
- Limited cooking facilities (Suites)
- Tea/coffee making facilities
- Spa bath ■ CD/DVD player
- Ironing facilities ■ Hair dryer
- All rooms non smoking

Room serviced daily



From **\$172** PER ROOM PER NIGHT*

1 APR – 30 OCT 12	ADULTS	1 NT	3 NTS	5 NTS
Killymoon Suite	1 to 2	172	516	860
Cottage	1 to 2	207	621	1035
Executive Suite	1 to 2	227	681	1135
31 OCT 12 – 20 DEC 12, 1 – 31 MAR 13	ADULTS	1 NT	3 NTS	5 NTS
Killymoon Suite	1 to 2	216	648	1080
Cottage	1 to 2	214	642	1070
Executive Suite	1 to 2	241	723	1205
21 DEC 12 – 28 FEB 13	ADULTS	1 NT	3 NTS	5 NTS
Killymoon Suite	1 to 2	218	654	1090
Cottage	1 to 2	231	693	1155
Executive Suite	1 to 2	241	723	1205

Other prices apply 1 Oct 11 – 31 Mar 12. Woodburne 3 Bedroom prices also available.

Includes Full breakfast daily.

Children 0 to 2 years – cot/bed charge payable direct.
3 to 14 years – adult prices apply.

Max capacity Killymoon Suite/Executive Suite – 2, Cottage – 4.

HATTAS

The Priory Country Lodge, Bothwell ◆◆◆◆◆



An exclusive fishing, hunting and touring lodge including four bedrooms within the original mansion and two external pavilions.

Town Centre 500m
Hobart 75km
Map page 16 Ref. 26

2 Wentworth Street, Bothwell

PROPERTY FEATURES:

- On-site chef
- Bar
- Barbecue area
- Sauna
- Guest lounge
- Library ■ DVD library
- Internet access (wireless)
- Non smoking

ACCOMMODATION FEATURES:

- Air-conditioning
- Tea/coffee making facilities
- Bathrobes
- Hair dryer

Room serviced daily

From **\$380** PER ROOM PER NIGHT*

1 APR – 30 SEP 12	ADULTS	1 NT	3 NTS	5 NTS
Superior Suite	1 to 2	380	1140	1900
Valley View Pavilion	1 to 2	450	1350	2250
Grand Valley Suite	1 to 2	475	1425	2375
Grand Valley Suite	1 to 2	550	1650	2750
1 OCT 12 – 31 MAR 13	ADULTS	1 NT	3 NTS	5 NTS
Superior Suite	1 to 2	400	1200	2000
Valley View Pavilion	1 to 2	500	1500	2500
Grand Valley Suite	1 to 2	525	1575	2625
Grand Valley Suite	1 to 2	575	1725	2875

Other prices apply 1 Oct 11 – 31 Mar 12.

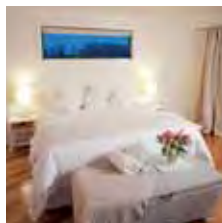
Includes Silver service afternoon tea on arrival.
Full breakfast and 2 course set menu dinner daily.

Children 0 to 11 years – free when sharing with an adult and using existing bedding, room only.

Max capacity 2.

PRITAS

Curringa Farm, Hamilton ◆◆◆◆◆



Beautiful spa cottages in tranquil bushland beside Lake Meadowbank, perfect relaxation for couples or families.

Town Centre 3km
Hobart 78km
Map page 16 Ref. 27

5831 Lyell Highway, Hamilton

PROPERTY FEATURES:

- Spa ■ Barbecue area ■ DVD library
- Laundry service ■ Parking ■ Non smoking

ACCOMMODATION FEATURES:

- Balcony ■ Fireplace ■ Barbecue (gas)
- Limited cooking facilities (Seaglenest)
- Kitchen (Wedgetail and Over the Back)
- Microwave ■ iPod docking station
- CD/DVD player ■ Laundry
- Ironing facilities ■ Spa bath (double)
- Bathrobes ■ Hair dryer

Room serviced weekly for stays of 7 nights or more



From **\$205** PER ROOM PER NIGHT*

1 OCT 11 – 31 MAR 13	ADULTS	1 NT	3 NTS	5 NTS
Seaglenest Studio	2	205	615	1025
Over the Back 2 Bedroom	2	205	615	1025
Wedgetail Wing 2 Bedroom	2	215	645	1075

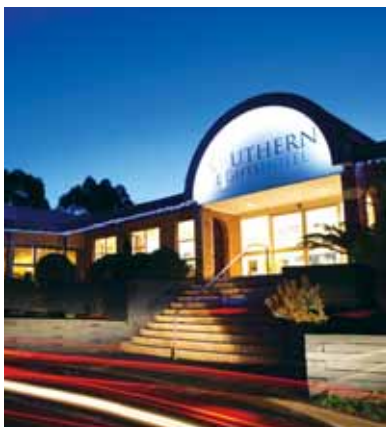
Includes Breakfast hamper on the first morning.

Children 0 to 2 years – cot free of charge.
3 to 14 years – adult prices apply.

Max capacity Seaglenest Studio – 2, Over the Back 2 Bedroom – 5,
Wedgetail Wing 2 Bedroom – 4.

CUFHBA

Southern Lights Hotel, Kingston ◆◆◆◆◆



Overlooking the city of Kingston, each of the refurbished rooms feature contemporary design and enjoy stunning river views.

Town Centre 10km
Map page 16 Ref. 29

19 Kingston View Drive, Kingston

PROPERTY FEATURES:

- Restaurant
- Room service (limited)
- Guest laundry
- Dry cleaning service ■ Parking

ACCOMMODATION FEATURES:

- Air-conditioning
- Mini bar
- Tea/coffee making facilities
- Internet access (broadband)
- Ironing facilities
- Hair dryer
- All rooms non smoking

Room serviced daily

From **\$135** PER ROOM PER NIGHT*

1 OCT 11 – 30 APR 12	ADULTS	1 NT	3 NTS	5 NTS
Hotel	1 to 2	150	450	750
Deluxe Hotel Family	1 to 2	175	525	875
Hotel Family	4	210	630	1050
1 MAY – 24 DEC 12	ADULTS	1 NT	3 NTS	5 NTS
Hotel	1 to 2	135	405	675
Deluxe Hotel Family	1 to 2	160	480	800
Hotel Family	4	185	555	925
25 DEC 12 – 31 MAR 13	ADULTS	1 NT	3 NTS	5 NTS
Hotel	1 to 2	155	465	775
Deluxe Hotel Family	1 to 2	170	510	850
Hotel Family	4	205	615	1025

3 night minimum stay applies 29 Dec 11 – 2 Jan, 29 Dec 12 – 2 Jan 13.

Children 0 to 2 years – cot/bed charge payable direct.
3 to 14 years – adult prices apply.

Max capacity Hotel/Deluxe – 3, Hotel Family – 4.

SOUHBA

Huon Bush Retreats, Ranelagh ◆◆◆◆



2 Bedroom Eco Cabin

Located in a private habitat reserve, Huon Bush Retreats is central to all the attractions of the Huon Valley.

Shop 3km
Map page 16 Ref. 30

300 Browns Road, Ranelagh

PROPERTY FEATURES:

- Room service (limited)
- Spa
- Barbecue area
- Walking trails
- Parking

ACCOMMODATION FEATURES:

- Balcony (2 Bedroom Eco Cabins)
- Mini bar
- Kitchen
- Tea/coffee making facilities
- CD player

Room serviced daily



From **\$245** PER ROOM PER NIGHT*

1 OCT 11 – 31 MAR 12	ADULTS	1 NT	3 NTS	5 NTS
Studio Eco Cabin	1 to 2	295	885	1475
2 Bedroom Eco Cabin	1 to 4	395	1185	1975
1 APR 12 – 31 MAR 13	ADULTS	1 NT	2 NTS	5 NTS
Studio Eco Cabin	1 to 2	295	490	1225
2 Bedroom Eco Cabin	1 to 4	395	690	1725

2 night minimum stay applies 22 Dec 11 – 16 Jan, 5 – 11 Apr, 22 Dec 12 – 16 Jan 13.

Children 0 to 2 years – cot free of charge.
3 to 14 years – adult prices apply.

Max capacity Studio Eco Cabin – 3, 2 Bedroom Eco Cabin – 5.

HBRTAS

Driftwood Cottages, Dover ◆◆◆◆



2 Bedroom Cottage

Driftwood Cottages offers quality self-contained cottages and studio rooms with spectacular views over Port Esperance Bay and the mountains.

Town Centre 500m
Map page 16 Ref. 31

51 Bay View Road, Dover

PROPERTY FEATURES:

- Barbecue area
- DVD library
- Guest laundry
- Parking

ACCOMMODATION FEATURES:

- Air-conditioning (2 Bedrooms)
- Tea/coffee making facilities
- Limited cooking facilities (Studios)
- Kitchen with microwave and dishwasher (2 Bedrooms)
- CD/DVD player
- Balcony
- Ironing facilities
- Hair dryer
- All rooms non smoking

Room serviced daily



From **\$210** PER ROOM PER NIGHT*

1 OCT 11 – 30 SEP 12	ADULTS	2 NTS	3 NTS	5 NTS
Studio Cottage	1 to 2	420	630	1050
2 Bedroom Cottage	1 to 4	560	840	1400
1 OCT 12 – 31 MAR 13	ADULTS	2 NTS	3 NTS	5 NTS
Studio Cottage	1 to 2	420	630	1050
2 Bedroom Cottage	1 to 4	590	885	1475

Children 0 to 2 years – cot free of charge.
3 to 14 years – adult prices apply.

Max capacity Studio Cottage – 2, 2 Bedroom Cottage – 4.

DRCTAS

The Peninsula Experience, Dover ◆◆◆◆◆



Stay on your own private peninsula by the fishing village of Dover, set on 250 acres with pristine wilderness, water and wildlife to explore.

Town Centre 4km
Map page 16 Ref. 31

Esperence Coast Road, Dover

PROPERTY FEATURES:

- Spa
- Barbecue area
- Fireplace
- DVD library
- Internet access (wireless)
- Guest laundry
- Parking

ACCOMMODATION FEATURES:

- Ocean views
- Kitchen with microwave
- Mini-bar
- Internet access (wireless)
- CD/DVD player
- Laundry
- All rooms non smoking

Apartment serviced weekly

From **\$440** PER ROOM PER NIGHT*

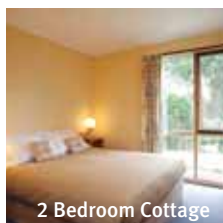
1 OCT 11 – 31 MAR 13	ADULTS	2 NTS	5 NTS	7 NTS
1 Bedroom House	1 to 2	880	2200	3080
2 Bedroom House	1 to 4	1180	2950	4130
3 Bedroom House	1 to 6	1480	3700	5180

Children 0 to 14 years – not catered for.

Max capacity 1 Bedroom House – 2, 2 Bedroom House – 4, 3 Bedroom House – 6.

PEXTAS

Bruny Island Explorers Cottages ★★★☆



2 Bedroom Cottage

Self catering cottage accommodation overlooking Daniels Bay. Spectacular views and wildlife at your doorstep.

Beach 500m
Map page 16 Ref. 32

20 Lighthouse Road, Bruny Island

PROPERTY FEATURES:

- Barbecue area
- Guest laundry
- Parking (undercover)

ACCOMMODATION FEATURES:

- Fireplace
- Kitchen with microwave
- Tea/coffee making facilities
- CD/DVD player

Apartment serviced mid stay for stays of 5 nights or more.

From **\$185** PER ROOM PER NIGHT*

1 OCT – 24 DEC 11, 1 MAY – 24 DEC 12	ADULTS	1 NT	3 NTS	5 NTS
2 Brm Cottage/2 Brm Family	1 to 2	185	555	925
2 Brm Executive Villa	1 to 2	225	675	1125
25 DEC 11 – 30 APR 12	ADULTS	1 NT	3 NTS	5 NTS
2 Brm Cottage/2 Brm Family	1 to 2	195	585	975
2 Brm Executive Villa	1 to 2	235	705	1175
25 DEC 12 – 31 MAR 13	ADULTS	1 NT	3 NTS	5 NTS
2 Brm Cottage/2 Brm Family	1 to 2	205	615	1025
2 Brm Executive Villa	1 to 2	245	735	1225

Other room types also available.

Children 0 to 2 years – cot/bed charge payable direct.
3 to 14 years – adult prices apply.

Max capacity 2 Bedroom Cottage/2 Brm Executive Villa – 4, 2 Bedroom Family – 5.

BRUBRU

Tours from Hobart

Coach Transfers



Daily scheduled Airport shuttle service to Hobart accommodation/CBD. Meets all flights and departs outside the terminal.

Tasmania's Own Redline offer daily scheduled coach transfers between Hobart, Launceston, Burnie, Devonport, with connecting services to the East Coast.

Travel in comfort on board one of the modern, fully air-conditioned coaches. Enjoy friendly commentary provided by an experienced team of drivers whilst travelling to your chosen destination.

Price per person (one way)

PRICE:	ADULT	CHILD 5-16 YEARS
Hobart Airport to CBD	\$18	\$13
Hobart to Launceston	\$45	\$22
Hobart to Devonport	\$72	\$36
Hobart to Burnie	\$86	\$43
Hobart to Bicheno	\$68	\$34
Hobart to St Helens	\$62	\$31

Other prices apply 1 Oct 11 – 31 Mar 12.

TASMANIA'S OWN REDLINE

REDLST

Cadbury Coach Tour



The sweetest tour in Australia! Visit the Cadbury Chocolate Factory Visitor Centre and gain an insight into chocolate through the interactive displays. There are free samples to enjoy and time to purchase discount chocolate.

INCLUDES:

- Admission to Cadbury Chocolate Factory Visitor Centre
- Modern coach travel
- Expert driver/guide and commentary
- Pick-up from Hobart accommodation

Departs: Mon to Fri from Brooke Street Pier, Hobart at 9:15am

Returns: 11:30am



PRICE:	1 OCT 11 – 31 MAR 12	1 APR 12 – 31 MAR 13
Adult	\$42	\$47
Child 4-14 years	\$21	\$24

Drop-off to Hobart accommodation not included.

EXPERIENCE TASMANIA

EXPHBA

The Hobart Paddle



Step off the street and pick up a paddle! Experience this harbour city from a different perspective and become part of Hobart's vibrant waterfront. On this relaxed, two hour kayaking tour paddle along Hobart's shoreline to explore historic Battery Point, vibrant Salamanca and the bustling docks of the city's waterfront. Work up an appetite in time to enjoy some fresh fish and chips straight from a dockside fish punt.

INCLUDES:

- 2 hour guided sea kayak tour
- All sea kayaking equipment
- Experienced guides
- Fish and chips snack
- Use of spray jacket and warm jacket
- Dry bag for personal items

Departs: Daily from Marieville Esplanade, Sandy Bay at 10:30am and twilight

Duration: 2 hours



PRICE:	1 OCT 11 – 31 MAR 12	1 APR 12 – 31 MAR 13
Adult	\$70	\$75
Child 4-12 years	\$70	\$75

FREYCINET ADVENTURES

FSATES

Grand Hobart Tour



Discover Hobart in a day with this combination tour. Enjoy magnificent views from the summit of Mt Wellington before an informative Hobart tour including comprehensive commentary about the city's history and lifestyle.

Experience close encounters with Tasmanian Devils and other unique animals at Bonorong Wildlife Sanctuary and finish your day relaxing at historic Richmond village.

INCLUDES:

- Hobart historical sights and attractions
- Admission to Bonorong Wildlife Sanctuary
- Expert driver/guide and commentary
- Return transfers from Hobart accommodation

Departs: Tue, Thu, Fri, Sat from Brooke St Pier, Hobart at 9:15am

Returns: 5pm

PRICE:	1 OCT 11 – 31 MAR 12	1 APR 12 – 31 MAR 13
Adult	\$144	\$148
Child 4-14 years	\$72	\$74

EXPERIENCE TASMANIA

EXPHBA

Tasmanian Devils



Journey to Bonorong Wildlife Sanctuary, overlooking the Brighton Valley. Take a guided tour of Bonorong and learn of the habits of Australia's native animals. You can even get friendly with a Tasmanian Devil.

Visit the historical town of Richmond on the way back to Hobart. Spend time exploring the convict built bridge, the gaol and the mellow stone cottages and shops.

INCLUDES:

- Admission to Bonorong Wildlife Sanctuary
- Modern coach travel
- Expert driver/guide and commentary
- Return transfers from Hobart accommodation

Departs: From Brooke Street Pier, Hobart at 1:10pm
Mon to Sat (Nov – Apr)
Tue, Thu, Fri, Sat (May – Oct)

Returns: 5pm

PRICE:	1 OCT 11 – 31 MAR 12	1 APR 12 – 31 MAR 13
Adult	\$80	\$84
Child 4-14 years	\$40	\$42

EXPERIENCE TASMANIA

EXPHBA

Mt Field and Tassie Devils



Mt Wellington, Russell Falls, the world's tallest hardwood trees, lush rainforests and the legendary Tassie Devil are just a few of the highlights you will experience in one fantastic day. Enjoy short walks through Mt Field National Park and amazing views from the summit of Mt Wellington. Come face to face with a Tasmanian Devil at one of Tasmania's best wildlife sanctuaries.

INCLUDES:

- Guided walks and commentary
- Guided tour of Wildlife Sanctuary
- National Parks Pass
- Return transfers from Hobart accommodation

Departs: From Hobart at 7:30am
Sun to Fri (Nov – Apr)
Tue, Thu, Sun (May – Oct)

Returns: 5pm

PRICE:	
Adult	\$120
Student/Pensioner	\$110

Not suitable for children under 12 years.

TOURS TASMANIA

TTAHBA

Port Arthur and Tassie Devils



Take a short drive to the Tasman Peninsula and visit some of the highest sea cliffs in Australia with stops at the Tasman Arch, the Devils Kitchen and Waterfall Bay. Travel to the Devil Conservation Park and witness the Devils feeding, followed by the 'Kings of the Wind' free flight bird show. Spend the afternoon exploring the Port Arthur Historic Site before taking a guided walking tour and harbour cruise.

INCLUDES:

- Admission to Devil Conservation Park
- Admission to Port Arthur Historic Site
- Harbour cruise
- Guided walking tour
- Return transfers from Hobart accommodation

Departs: Tue, Wed, Fri, Sat from Hobart at 7:30am

Returns: 6pm

PRICE:

Adult	\$120
Student/Pensioner	\$110

Not suitable for children under 12 years.

TOURS TASMANIA

TTAHBA

Grand Port Arthur



Your tour starts in Hobart travelling across the Tasman Bridge, through Eaglehawk Neck, onto the Tasman Peninsula. Wonder at the spectacle of Tasman Arch and the magnitude of Devils Kitchen and enjoy superb views of the rugged coastline.

Take a guided walking tour of Port Arthur with access to over 30 ruins and restored buildings.

INCLUDES:

- Admission to Port Arthur Historic Site
- Harbour cruise
- Isle of Dead guided tour
- Lunch
- Audio headsets
- Expert driver/guide and commentary
- Return transfers from Hobart accommodation

Departs: Sun to Fri from Brooke Street Pier, Hobart at 8:15am (Oct – Apr), 9:15am (May – Sep)

Returns: 5pm

PRICE:

	1 OCT 11 – 31 MAR 12	1 APR 12 – 31 MAR 13
Adult	\$155	\$160
Child 4-14 years	\$78	\$80

EXPERIENCE TASMANIA

EXPHBA

Hobart to Port Arthur



Depart Hobart in the comfort of a modern catamaran and experience the beauty of Cape Raoul and Tasmania's unique coastal scenery as you travel to Port Arthur.

Immerse yourself in the fascinating history of the Port Arthur Historic Site and spend time exploring the many historic buildings and ruins. Full commentary is provided by your captain.

INCLUDES:

- 2 hours 30 minutes coastal cruise
- Admission to Port Arthur Historic Site
- Guided walking tour
- Isle of Dead guided tour
- Morning tea
- Lunch

Departs: Wed, Fri, Sun from Brooke Street Pier, Hobart at 8am (Oct – Apr)

Returns: 4:45pm

PRICE:

	1 OCT 11 – 30 APR 12	1 OCT 12 – 31 MAR 13
Adult	\$229	\$240
Child 4-16 years	\$183	\$192
Family 2 adults and 2 children	\$700	\$700

NAVIGATORS

NAVHBA

Peppermint Bay Cruise



Enjoy a relaxing day discovering the real Tasmania on board the 23 metre catamaran, Peppermint Bay II. This fully guided cruise takes in the harbour, the River Derwent, and the magnificent waters of the D'Entrecasteaux Channel on its way past Bruny Island to Peppermint Bay. View the colourful sea gardens and giant kelp forests through underwater cameras. Enjoy lunch at the acclaimed Peppermint Bay restaurant.

INCLUDES:

- 5 hour cruise
- Underwater camera drop
- 3 course lunch at Peppermint Bay restaurant
- Captains Upper deck also includes morning tea, all non alcoholic beverages and wine with lunch

Departs: From Brooke Street Pier, Hobart at 11am Daily (Dec – Mar) Wed, Fri to Sun (Apr – Nov)

Returns: 4pm

PRICE:

	ADULT	CHILD 4 – 14 YEARS	FAMILY 2 ADULTS/2 CHILDREN
Atrium Seat	\$98	\$48	\$224
Window Seat	\$118	\$58	\$274
Captains Upper Deck	\$168	N/A	N/A

Other prices apply 1 Oct 11 – 31 Mar 12.

HOBART CRUISES

HBAHBA

Bruny Wildlife Adventure



Your adventure begins and ends in Hobart aboard the 23 metre catamaran and includes a voyage to Bruny Island aboard the state-of-the-art coastal expedition vessel Adventure. Experience South Bruny's sculpted coastline and abundant wildlife including sea eagles, dolphins and tiny penguins, and travel into the mystical Southern Ocean.

INCLUDES:

- Return cruise from Hobart to Bruny Island aboard Peppermint Bay II
- Bruny Island tour aboard coastal expedition vessel Adventure
- Full length expedition jacket
- Morning tea
- Gourmet lunch

Departs: From Brooke Street Pier, Hobart at 8:30am Daily (Dec – Mar) Mon, Wed, Fri to Sun (Apr, Nov) Mon, Fri, Sun (May, Oct) Sun (Jun – Sep)

Returns: 4pm

PRICE:

Adult	\$195
Child 4-14 years	\$125
Family 2 adults and 2 children	\$515

Minimum height of 130cm required.

HOBART CRUISES

HBAHBA

Bruny Island Wilderness Cruise



Experience Robert Pennicott's acclaimed three hour Wilderness cruise which takes you along Bruny Island's rugged coast beneath some of Australia's highest sea cliffs. Enter deep sea caves and join in the search for wildlife such as seals, dolphins and seabirds.

The custom built yellow boats are ideal for viewing the spectacular coastline and wildlife with covered open-air seating providing an excellent all round view.

INCLUDES:

- 3 hour Bruny Island Wilderness cruise
- Morning tea
- Lunch
- Return scenic bus tour with guided commentary from Hobart

Departs: Daily from Franklin Wharf, Hobart at 8am

Returns: 5:30pm

PRICE:

	1 OCT 11 – 31 MAR 12	1 APR 12 – 31 MAR 13
Adult	\$165	\$180
Child 3-16 years	\$110	\$125

BRUNY ISLAND CRUISES

BRUTAS

Tours from Hobart and Surrounds

Tasman Island Eco Cruise



Robert Pennicott's Tasman Island Cruises travels the coastline between Eaglehawk Neck and Port Arthur, southern Tasmania. You will experience the highest sea cliffs in the southern hemisphere and search the coastline for wildlife such as seals, dolphins and seabirds. The custom built yellow boats are ideal for eco-cruising, allowing maximum vision and interaction with the coastal wilderness. The skippers are highly skilled and will ensure your experience is enjoyable and informative.

INCLUDES:

- 3 hour eco cruise to Tasman Island
- Morning tea ■ Lunch
- Return transfers from Hobart with guided commentary

Departs: Daily from Franklin Wharf, Hobart at 7:45am

Returns: 6pm



PRICE:	1 OCT 11 – 31 MAR 12	1 APR 12 – 31 MAR 13
Adult	\$165	\$180
Child 3-16 years	\$110	\$125

TASMAN ISLAND CRUISES

TICPAR

Mt Wellington Descent



Transfer to the summit of Mt Wellington then follow your guide on a 21 kilometre bike ride down the mountain, stopping along the way to take in the varying views. The winding mountain road takes you down to the foothills where you can choose to experience the thrill of the off-road section. Regroup at Cascade Gardens then complete the ride through the back streets of Hobart and Battery Point at Salamanca Place on the waterfront of Hobart.

INCLUDES:

- Cycle guide and support vehicle
- Cycle safety briefing
- Mountain bike, helmet and safety vest
- Transfer to the summit

Departs: Daily from Brooke Street Pier, Hobart at 10am, 1pm (Sep – Jun)

Returns: 12:30pm, 3:30pm



PRICE:

Adult	\$75
Child 8-14 years	\$65

Not suitable for children under 8 years.

UNDER DOWN UNDER

UDUHBA

Freycinet National Park



Journey from Hobart to Tasmania's stunning East Coast and discover the beautiful Freycinet National Park. Take a guided walk to Wineglass Bay lookout and continue on to Wineglass Bay. Alternatively, return from the lookout with a guide and explore Sleepy Bay, Honeymoon Bay and Cape Tourville Lighthouse.

INCLUDES:

- Wineglass Bay lookout
- Guided walks
- National park fees
- Experienced guide
- Return transfers from Hobart accommodation

Departs: Sun to Fri from Hobart at 7:30am

Returns: 7pm

PRICE:

Adult	\$120
Student/Pensioner	\$110

Not suitable for children under 12 years.

TOURS TASMANIA

TTAHBA

Tahune AirWalk & Hastings Caves



Experience the Huon Valley and the Great Southern Forests, at Tahune Forest AirWalk. Stroll 40 metres above the ground amongst the tree tops - what a view!

Further south discover Hastings Caves, a beautiful spot for lunch and a swim in the all natural thermal springs pool before heading underground for a guided tour exploring the spectacular cave formations.

INCLUDES:

- Admission to Tahune Forest AirWalk
- Hastings Cave guided tour
- National park fees
- Return transfers from Hobart accommodation

Departs: Mon, Tue, Thu from Hobart at 7:30am

Returns: 5pm

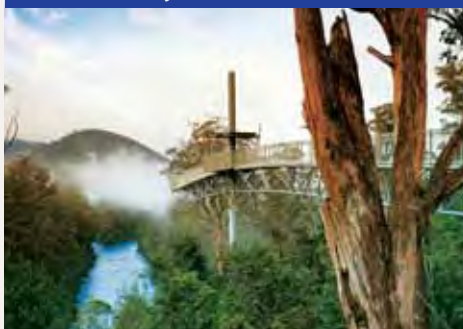
PRICE:	1 OCT 11 – 31 MAR 12	1 APR 12 – 31 MAR 13
Adult	\$120	\$140
Student/Pensioner	\$110	\$130

Not suitable for children under 12 years.

TOURS TASMANIA

TTAHBA

Huon Valley & Tahune AirWalk



Experience the beauty of South West Tasmania's temperate rainforests, unique timbers and wild rivers. Walk under tall tree fern canopies alongside the tannin coloured Huon River.

Travel south by coach through the lush rolling hills of the Huon Valley and head deep into the Aussie bush to walk the tree tops of pristine forest at Tahune Forest AirWalk.

INCLUDES:

- Admission to Tahune Airwalk
- Light lunch
- Air-conditioned coach
- Expert driver/guide and commentary
- Return transfers from Hobart accommodation

Departs: Mon, Fri from Brooke Street Pier, Hobart
8:15am (Oct – Apr)
9:15am (May – Sep)

Returns: 4:30pm

PRICE:	1 OCT 11 – 31 MAR 12	1 APR 12 – 31 MAR 13
Adult	\$150	\$155
Child 4-14 years	\$75	\$78

EXPERIENCE TASMANIA

EXPHBA

Huon Jet



Experience the thrill of white water jet boating on the Huon River around 40 minutes south of Hobart. Your skipper negotiates rapids and shingle beds in water only centimetres deep, and executes a number of 360 degree spins, all in complete safety. The dark tannin stained waters give off magnificent reflections and small Huon Pines can be seen along the river banks.

INCLUDES:

- 35 minute jet boat ride
- Use of life jacket and poncho

Departs: Daily from Huon Visitor Centre Jetty, Huonville
Regular departures between 9:15am – 5pm

Duration: 35 minutes

PRICE:	1 OCT 11 – 30 SEP 12	1 OCT 12 – 31 MAR 13
Adult	\$72	\$75
Child 4-16 years	\$49	\$50

HUON RIVER JET BOATS

HUOHBA

