

3 Day Cradle Mountain Experience



HIGHLIGHTS:

- Abundant native wildlife
- Challenging mountainous terrain
- Panoramic views and stunning vistas
- Sumptuous Tasmanian fare

Day 1: Launceston to Cradle Mountain

Your tour begins in Launceston with a general tour briefing, gear check and the opportunity to hire or purchase any equipment that you need. Depart for Cradle Mountain, stopping in the historic town of Sheffield to see the murals and morning tea. Check in to your overnight accommodation before enjoying lunch followed by an afternoon walk. There are a number of walks to choose from and your guide will offer one most appropriate to the conditions at the time. A favourite afternoon walk is around beautiful Dove Lake taking in the amazing pre-historic plant life and impressive views of Cradle Mountain and Dove Lake. There will be time in the evening to sight some of Tassie's special creatures as they graze in the dusk light. Overnight in Cradle Mountain. (LD)

Day 2: Cradle Mountain

Set off early today for a full day in the mountains. Your guides can make it as challenging or as leisurely as you wish. Conditions permitting, they will offer you the opportunity to trek to the base of Cradle Mountain and climb to its summit. En route encounter the beautiful Crater Falls and Crater Lake before tackling the steep trail up to Marion's Lookout, taking in the sweeping views of the surrounding mountains. If weather or other conditions prevent climbing to the summit, an alternative walk will be offered such as the challenging Face Track which skirts beneath Cradle Mountain. At night retire back to the comfortable cabins to relax before enjoying a hearty evening meal. Overnight in Cradle Mountain. (BLD)

Day 3: Cradle Mountain to Launceston

Another wonderful day in the hills begins with a delicious breakfast. Enjoy a morning walk and stop by the visitor centre. Choose from a selection of spectacular trails such as the King Billy walk which takes in some of the oldest trees in the world including an ancient King Billy that is between 1,500 and 2,000 years old. After lunch, travel back to Launceston passing through the rolling farmland and colonial style towns of the countryside. (BL)

INCLUDES:

- 2 nights shared cabin accommodation
- Sleeping bag and inner sheet
- Experienced guide
- Waterproof jacket, overpants and gaiters
- National park fees
- Meals as indicated (B = breakfast, L = lunch, D = dinner)
- Return transfers from Launceston to Cradle Valley

Departs: From Launceston at 8:30am
Sun (all year)
Every 2nd Thu (Oct – May)

Returns: 5:30pm

PRICE PER PERSON: 1 OCT 11 – 30 JUN 12
Adult multi-share \$950

Not suitable for children under 10 years. Moderate level of fitness required.

TASMANIAN EXPEDITIONS

TASLST

4 Day Maria Island Walk



HIGHLIGHTS:

- See natural and historic wonders of Maria Island
- Eco-friendly tourism experience
- Walk along spectacular coastlines
- See abundant wildlife ■ Small group touring
- World Heritage Listed convict settlement

Day 1: Hobart to Maria Island

Start with a hotel pick-up in Hobart. Then it's a short drive to Triabunna. Enjoy a marine adventure as you explore Mercury Passage en route to Shoal Bay on Maria Island's isthmus. Arrive in ample time to enjoy stunning views and walk through beautiful forests with abundant wildlife. Relax at the delightful camp, take a swim in the sheltered bay and enjoy Tasmanian wine and fresh food. Overnight at Casuarina Beach Camp. (LD)

Day 2: Maria Island

Walk from Riedle Bay across the isthmus to Shoal Bay to stroll five fabulous beaches. Explore the convict cells at Point Lesueur and visit an ochre pit at Bloodstone Point – one of the original ochre sources for the Tasmanian Aborigines. Put your feet up at camp, where native birds will entertain you while you sip wine on the deck. Overnight at White Gums Camp. (BLD)

Day 3: Maria Island

Head inland to green forests that are a habitat for the 40 endangered Spotted Pardalote. Walk the gentle inland track to Hopgrounds Beach and the Painted Cliffs, or continue to the 711 metre summit of Mt Maria for breathtaking 360 degree views, or save the mountain climb for Bishop and Clerk, with its fantastic sea and coastline vistas. Finish the day with a sumptuous banquet and accommodation in the historic colonial home once occupied by Italian entrepreneur, Diego Bernacchi. (BLD)

Day 4: Maria Island to Hobart

A chance to relax and enjoy the serenity of Darlington and walk through the tall Blue Gum forest, to the convict brickworks and heritage reservoir and around to the world class Fossil Cliffs. Enjoy a champagne lunch overlooking the stunning Freycinet Peninsula, followed by a gentle tour around the convict settlement and industrial ruins of Darlington itself as you soak in the atmosphere. Return to Hobart for a last farewell followed by a drop off to your hotel or the airport. A transfer to Hobart Airport is available connecting with flights departing from 6pm. (BL)

INCLUDES:

- 3 nights accommodation ■ Experienced guides
- Camping equipment, sleeping bag and pillow
- National park fees
- Maximum of 8 passengers
- Meals as indicated (B = breakfast, L = lunch, D = dinner) and wine with evening meals
- Return transfers from Hobart accommodation

Departs: Mon to Sat from Hobart at 7:45am

Returns: 5pm

PRICE PER PERSON: 1 OCT 11 – 25 DEC 12 26 DEC 12 – 31 MAR 13
Adult twin share \$2150 \$2250

Not suitable for children under 12 years. Moderate level of fitness required.

MARIA ISLAND WALK

MARHBA

4 Day Bay of Fires Walk



HIGHLIGHTS:

- Bay of Fires coastline
- Bay of Fires Lodge
- Mt William National Park
- Eddystone Point Lighthouse

Day 1: Launceston to Mt William National Park

Transfer from Launceston out to the walking base at Quamby Estate. After a light breakfast, gear check and introductions, journey to Mt William National Park via a scenic route that includes the rich pastoral landscapes of Scottsdale and the mining town of Derby. From the northern part of Mt William National Park, begin walking at Boulder Point. Views to the north include the Bass Strait Islands (Flinders and Cape Barren). Overnight at Forester Beach Camp. (BLD)

Day 2: Forester Beach Camp to Eddystone Point and Bay of Fires Lodge

After breakfast, walk south absorbing the magnificent coastline colours, solitude and views across heath lands and across the ocean to the east. Enjoy lunch at one of the sheltered coves along the way to Eddystone Point Lighthouse and spend the afternoon in the seclusion of beaches and coves before arriving at the Bay of Fires Lodge for your overnight accommodation. (BLD)

Day 3: Bay of Fires Lodge

The day is yours to enjoy at leisure. Perhaps choose to kayak down the Anson's River and the bird rich waters of Anson's Bay, concluding with a stroll over the dunes of Abbotsbury Peninsula to the lodge. Other options for this day include fishing or snorkelling in the marine nursery. Overnight at Bay of Fires Lodge. (BLD)

Day 4: Bay of Fires to Launceston

Following a leisurely breakfast, depart from the lodge and walk through eucalypt forests and coastal heath land. After lunch, your return trip takes you through the Fingal Valley before returning to the walkers' base at Quamby Estate. After a well earned glass of wine and peaceful rest, you will be transferred back to Launceston. (BL)

INCLUDES:

- 1 nights accommodation at Forester Beach Camp
- 2 nights accommodation at Bay of Fires Lodge
- Use of backpack and Gore-tex jacket
- Two qualified guides
- National Park Pass
- Meals as indicated (B = breakfast, L = lunch, D = dinner)
- Non-alcoholic beverages and wine with meals on Bay of Fires Walk
- Return transfers from Peppers Seaport Hotel, Launceston

Departs: Daily from Launceston at 7:20am
(1 Oct – 1 May)

Returns: 6:30pm

PRICE PER PERSON: 1 OCT – 31 DEC 11 1 JAN 13 – 31 MAR 13
1 APR – 1 MAY 12
Adult twin share \$2050 \$2225

Other prices apply 1 Jan – 31 Mar 12, 1 Oct – 31 Dec 12. Not suitable for children under 12 years. Moderate level of fitness required.

BAY OF FIRES

BAYLST

Extended Walks and Tours

6 Day Walls of Jerusalem



HIGHLIGHTS:

- King David's Peak and Solomons Jewels
- Panoramic views from Mt Jerusalem
- Lake Ball
- Small group touring

Day 1: Hobart to Base Camp Tasmania

Your tour begins with a transfer from Hobart to Base Camp Tasmania. The afternoon includes a general tour briefing and hiking gear and equipment check. Overnight at Base Camp Tasmania. (D)

Day 2: Base Camp Tasmania to Solomons Jewels

Set off early today for the long drive through the central highlands to Mersey Gorge. From here you climb steadily through dry sclerophyll forest onto the alpine plateau. After reaching the plateau follow a well graded track to your overnight campsite at Solomons Jewels. (BLD)

Day 3: Solomons Jewels to East Wall

Continue deeper into the Walls area by flanking the West Wall to the right with its prominent peaks of King Davids Peak and Solomons Throne. Climbing to the saddle between Solomons Throne and the Temple you can enjoy the view behind to the Pool of Bethesda and the northern area of the park. After lunch at Damascus Gate, descend into the valley to your evening's campsite alongside another beautiful tarn below the towering East Wall and Mt Jerusalem. (BLD)

Day 4: East Wall to Stretcher Lake

The walk follows the Jaffa Vale to pick up the track at Lake Ball, a glacier-gouged lake. Traverse the southern slopes of Mt Moriah above the lake to a restored trapper's hut. Take the opportunity to have a swim in the lake before continuing on to the campsite at Stretcher Lake. (BLD)

Day 5: Stretcher Lake to Base Camp Tasmania

Another early start, a short walk to rejoin the inward track above the trapper's hut and a descent through the eucalypt forest to rejoin the bus for the journey home to Base Camp. Enjoy a farewell dinner. Overnight at Base Camp Tasmania. (BLD)

Day 6: Base Camp to Hobart

After breakfast, you will be transferred back to Hobart. (B)

INCLUDES:

- 2 nights accommodation at Base Camp Tasmania
- 3 nights camping
- Camping equipment, sleeping bag and pillow
- Experienced guides
- National park fees
- Meals as indicated (B = breakfast, L = lunch, D = dinner) and wine with evening meals
- Return transfers from Hobart accommodation

Departs: Selected dates from Hobart (Oct – Apr)

Returns: 10am



PRICE PER PERSON:	1 OCT 11 – 30 APR 12	1 OCT 12 – 31 MAR 13
Adult twin share	\$1250	\$1281
Child 8-16 years	\$1000	\$1025

Not suitable for children under 8 years. Moderate level of fitness required.

TASMANIAN WILDERNESS EXPERIENCES TWEHBA

6 Day Cradle Mountain Huts



HIGHLIGHTS:

- Overland Track
- Cradle Valley
- Dove Lake
- Lake St Clair
- Lake Windermere

Day 1: Launceston to Cradle Valley

The day begins with a drive to Cradle Valley. Start the walk at Waldheim Chalet and climb onto the alpine plateau with spectacular views of Dove and Crater Lakes. After lunch, walk the rim of the glacial cirque before passing through Waterfall Valley. Overnight at Barn Bluff Hut. (BLD)

Day 2: Barn Bluff Hut to Pine Forest Moor Hut

Crossing the sedgeland moors, pass many glacial lakes. Enjoy views of the Lemonthyme Forests from the Forth Valley Lookout. Overnight at The Pine Forest Moor Hut. (BLD)

Day 3: Pine Forest Moor Hut to Pelion Hut

The walk follows the historic Innes Track sheltered below Mt Pelion West through rainforest. The final section of the day's walk is on to the Pelion Plains. Overnight at Pelion Hut. (BLD)

Day 4: Pelion Hut to Kia Ora Hut

Today journey to Pelion Gap, the point where you may elect to climb Tasmania's highest peak, Mt Ossa. In the afternoon, walk below Cathedral Mountain and arrive at the Kia Ora Hut for your overnight accommodation. (BLD)

Day 5: Kia Ora Hut to Windy Ridge

This day begins with a visit to the historic Du Cane Hut. The middle section of the day is spent meandering along the Mersey River. Walk through myrtle forests to the Windy Ridge Hut at Windy Ridge for your overnight accommodation. (BLD)

Day 6: Lake St Clair to Launceston

Walk to Lake St Clair, where you will be met and taken on a 17 kilometre boat cruise. The return trip to Quamby Estate is through the highland lakes, descending the rugged Western Tiers, through Poatina arriving back into Launceston. (BL)

INCLUDES:

- 5 nights accommodation in Cradle Huts
- Cruise across Lake St Clair
- Two qualified guides
- Use of backpack and Gore-tex jacket
- National Park and Overland Track Passes
- Meals as indicated (B = breakfast, L = lunch, D = dinner)
- Non-alcoholic beverages and wine with meals on Cradle Mountain Huts Walk
- Return transfers from Peppers Seaport Hotel, Launceston

Departs: Daily from Launceston at 6:15am (1 Oct – 1 May)

Returns: 6:30pm

PRICE PER PERSON:	1 OCT – 31 DEC 11 1 APR – 1 MAY 12	1 JAN – 31 MAR 13
Adult twin share	\$2600	\$2900

Other prices apply 1 Jan – 31 Mar 12, 1 Oct – 31 Dec 12. Not suitable for children under 12 years. Moderate level of fitness required.

CRADLE MOUNTAIN HUTS CMHCMN

4 Day Western Wilderness



HIGHLIGHTS:

- Cradle Mountain National Park
- Strahan
- Mt Field National Park
- Port Arthur Historic Site

Day 1: Launceston to Strahan

Departing Launceston, the first stop is at a renowned cheese factory near the township of Deloraine. Continue to the World Heritage Area of Cradle Mountain National Park. Join a guided walk or free walk on one of the many trails around Cradle Mountain, Dove and Crater Lakes. In the afternoon, travel to Strahan. Overnight in Strahan. (D)

Day 2: Strahan

Your West Coast experience unfolds with a full day to relax, or you may choose to take part in a number of wonderful optional activities that are available in this amazing little village. Choose from the Gordon River Cruise, West Coast Wilderness Railway or hire a kayak and explore the edges of Macquarie Harbour (all own expense). Overnight in Strahan. (B)

Day 3: Strahan to Hobart

Delve further into the wilderness today with a visit to Lake St Clair, which at a depth of 200m, is Australia's deepest freshwater lake. Transfer to the Derwent Valley and Mt Field National Park. Take a short walk to Russell Falls and spend some time this afternoon exploring the unique area, including the Giant Swamp Gums. Continue on towards Hobart via the township of New Norfolk. Overnight in Hobart. (B)

Day 4: Port Arthur

Drive south towards the Tasman Peninsula then cross Eaglehawk Neck and visit Tasman National Park. Learn about the endangered Tasmanian Devil at the Wildlife Sanctuary then journey on to Port Arthur and its amazing Historic Site. Take a guided walk and a short harbour cruise to give you an insight into the life of a convict, in a place once considered "hell on earth". Some free time to explore the old buildings and chilling prison ruins before returning to Hobart. (B)

INCLUDES:

- 3 nights budget accommodation with private facilities
- Admission to Port Arthur Historic Site
- Admission to Tasmanian Devil and Wildlife Sanctuary
- Experienced guide
- National park fees
- Air-conditioned mini coach
- Meals as indicated (B = breakfast, D = dinner)

Departs: Tue from Launceston at 8am (Oct – May)

Returns: Hobart at 6pm

PRICE PER PERSON:	1 OCT 11 – 31 MAR 12	1 APR 12 – 31 MAR 13
-------------------	----------------------	----------------------

Adult twin share	\$1095	\$995
Adult sole use	\$1395	\$1235

Alternate itinerary applies 1 Oct 11 – 31 Mar 12. Not suitable for children under 12 years.

UNDER DOWN UNDER UDUHBA

6 Day Tasmania in a Circle



HIGHLIGHTS:

- Tasman National Park ■ Port Arthur Historic Site
- East Coast ■ Cradle Mountain National Park
- Strahan ■ Small group touring

Day 1: Launceston to Port Arthur via Hobart

Journey from Launceston down the Heritage Highway to the historic Midland towns of Ross and Oatlands. Arrive in Hobart and head to the top of Mt Wellington for spectacular views of the city. After a short tour of the city, travel south to the Tasman Peninsula and take in all the attractions of Tasman National Park. Overnight in Port Arthur. (L)

Day 2: Port Arthur to Bicheno

Spend the morning exploring the Port Arthur Historic Site and learn about the convict history of Tasmania. Visit a boutique chocolate factory before leaving the Tasman Peninsula for the East Coast. At Freycinet National Park, view Wineglass Bay from Tourville Lookout and stop at a marine farm for fresh oysters and steamed mussels (own expense). Continue to Bicheno for an optional evening penguin tour (own expense). Overnight in Bicheno. (BL)

Day 3: Bicheno to Launceston

See the amazing Blowhole at the rocky coastline of Bicheno and visit a wildlife park before heading to St Helens. See the granite rock coastline of the Bay of Fires and one of Tasmania's best beaches at Binalong Bay. Travel on to Launceston via Scottsdale. Overnight in Launceston. (BL)

Day 4: Launceston to Cradle Mountain

This morning visit beautiful Cataract Gorge before a stop at Chudleigh Honey Farm to taste honey. Continue to Maracoopa Cave near Mole Creek for a guided glow worm tour before arriving to your overnight accommodation at World Heritage Listed Cradle Mountain National Park. (BL)

Day 5: Cradle Mountain to Strahan

Explore famous Dove Lake with magnificent Cradle Mountain in the background. Enjoy short walks in the national park before travelling on to Strahan via Lake Rosebery and historic mining towns. Visit the historical train station at Regatta Point, Hogarth Falls and an old saw mill. Overnight in Strahan. (BL)

Day 6: Strahan to Hobart

A short visit to Queenstown, a historic mining town, before travelling to Nelson Falls and Lake St Clair, Australia's deepest lake. Drive past highland lakes, rivers and hydroelectric power generators. Stop to view famous Russell Falls and the Tall Trees before arriving back in Hobart. (BL)

INCLUDES:

- 5 nights accommodation ■ National park fees
- Experienced guide ■ Air-conditioned mini coach
- Meals as indicated (B = breakfast, L = lunch)
- Return transfers from Launceston accommodation

Departs: Mon from Launceston at 8:30am, Hobart at 11:30am (Sep – May)

Returns: Hobart at 5:45pm

PRICE PER PERSON: 1 OCT 11 – 12 MAY 12 1 SEP 12 – 31 MAR 13

Adult twin share	\$1723	\$1790
Child 7-14 years	\$1360	\$1370

Not suitable for children under 7 years. Sole use prices on application.

FUN TASSIE TOURS

FTLST

6 Day Tarkine & North West Coast



HIGHLIGHTS:

- Mt Farrell ■ Tarkine wilderness
- Corinna Forest walks ■ Pieman River cruise
- Mt Donaldson

Day 1: Launceston to Mt Farrell and Rosebery

Journey to the West Coast and explore the various lakes and peaks in the area along the way. There is an optional climb of Mt Farrell which provides an excellent view of Lake Rosebery, Lake Mackintosh and the first glimpse of the Tarkine. Overnight in Rosebery. (LD)

Day 2: Rosebery to Corinna

Drive to Mt Murchison, the highest point on the West Coast, climb to the summit and see the fantastic views of the Tarkine and the mountains of Tasmania's World Heritage areas. Head to the tiny historic mining township of Corinna situated in pristine rainforest on the edge of the Pieman River. Stay the next three nights in Corinna. (BLD)

Day 3: Corinna Forest Walks

Explore the beautiful settings of Corinna, choose from many short walks in the temperate rainforest that surrounds the town. In the afternoon take an optional canoe excursion along the Pieman River (own expense). (BLD)

Day 4: Tarkine Coast

Today take a leisurely boat trip down the majestic Pieman River on the Arcadia II. On arrival at the mouth of the Pieman River explore the wild west coastline. There is time for further exploration or a chance to simply relax and immerse yourself in the surrounding wilderness before returning to Corinna in the afternoon. (BLD)

Day 5: Tarkine Sea to Summit

Head to Mt Donaldson and start the easy trail to the top, be rewarded with great views of the wild coast, button grass hills, forested valleys and rugged peaks. In the afternoon explore the Balfour Track, Lake Chisholm and Julius River Forest Reserves which offer a range of short walks en route to the coastal town of Stanley. Overnight in Stanley. (BLD)

Day 6: Stanley to Launceston

Explore the township of Stanley and undertake a short walk from East Arm Beach to The Nut, where the views from the top are breathtaking. There is an opportunity to explore the Rocky Cape National Park on the return to Launceston. (BL)

INCLUDES:

- 5 nights shared accommodation
- Pieman River cruise
- Experienced guide ■ National park fees
- Air-conditioned mini coach
- Waterproof jacket, overpants and gaiters
- Meals as indicated (B = breakfast, L = lunch, D = dinner)
- Return transfers from Launceston accommodation

Departs: Every 2nd Sun from Launceston at 8:30am (9 Oct 11 – 13 May 12)

Returns: 5:30pm

PRICE PER PERSON:

Adult multi-share	\$1995
-------------------	--------

Not suitable for children under 10 years. Moderate level of fitness required.

TASMANIAN EXPEDITIONS

TASLST

6 Day Island Discovery



HIGHLIGHTS:

- Port Arthur Historic Site
- Cradle Mountain
- Freycinet National Park
- Bay of Fires ■ Strahan

Day 1: Hobart to Bicheno

Visit the historic village of Richmond and then head north along the coast to the town of Swansea. Spend the afternoon exploring Freycinet National Park. At dusk take a guided tour for a closer look at the life of the Little penguins as they return nightly to their rookeries and feed their young (own expense). Overnight in Bicheno. (D)

Day 2: Bicheno to Launceston

Journey north and take a walk on the white beaches of the Bay of Fires. Some time for lunch at the fishing village of St Helens before making your way inland to Launceston. Spend the afternoon exploring Cataract Gorge and First Basin. Overnight in Launceston. (B)

Day 3: Launceston to Strahan

Departing Launceston, the first stop is at an acclaimed cheese factory near Deloraine. Transfer to Cradle Mountain National Park and walk one of the many trails. Overnight in Strahan. (BD)

Day 4: Strahan

A full day to relax, or you may choose to take part in a number of wonderful optional activities that are available. Enjoy a cruise on the Gordon River or travel on the West Coast Wilderness Railway (all own expense). Overnight in Strahan. (B)

Day 5: Strahan to Hobart

Take a short walk and explore Lake St Clair, Australia's deepest freshwater lake. Continue towards the Derwent Valley and onwards to discover Mt Field National Park. Spend time at Russell Falls. Overnight in Hobart. (B)

Day 6: Port Arthur

Head south towards the Tasman Peninsula and travel through the Tasman National Park before visiting a wildlife sanctuary. Explore the Port Arthur Historic Site before returning to Hobart. (B)

INCLUDES:

- 5 nights budget accommodation with private facilities
- Admission to Port Arthur Historic Site
- Admission to Tasmanian Devil and Wildlife Sanctuary
- Experienced guide
- National park fees
- Air-conditioned mini coach
- Meals as indicated (B = breakfast, D = dinner)

Departs: Sun from Hobart at 8am (Oct – May)

Returns: 5:30pm



PRICE PER PERSON:

1 APR 12 – 31 MAR 13

Adult twin share	\$1495
Adult sole use	\$1895

Other prices and alternative itinerary applies 1 Oct 11 – 31 Mar 12. Not suitable for children under 12 years. 7 Day Island Discovery Tour also available.

UNDER DOWN UNDER

UDUHBA

Extended Tours and Passes

10 Days Out of Launceston



HIGHLIGHTS:

- Marakoopa Caves ■ Cradle Mountain
- Freycinet National Park ■ Bay of Fires

Day 1: Launceston to Cradle Mountain

Depart for Cradle Mountain, stopping at Mole Creek for a tour of the Marakoopa Caves.

Arrive at Cradle Mountain and enjoy a hike up to Marion's Lookout or Hanson's Peak. Overnight at a bush camp near Cradle Mountain. (LD)

Day 2: Cradle Mountain to Corinna

Today embark on a four hour walk through the Tarkine, Australia's largest temperate rainforest. Cross the west coast's Pieman River at Corinna, a remote Tasmanian settlement. Overnight at a bush camp near Cradle Mountain. (BLD)

Day 3: Corinna to Macquarie Heads

After breakfast it is off to Zeehan, an old mining town. Embark on a three hour bush walk at Montezuma Falls, Tasmania's tallest waterfall. Continue on to a

bush camp at Macquarie Heads. If you are interested, you can try a spot of fishing and catch your dinner. (BLD)

Day 4: Macquarie Heads to Highland Lakes

Drive through Franklin-Gordon Wild Rivers National Park and stop for some short walks including Donaghy's Lookout, Franklin River and Nelson Falls. Take a three hour walk at Lake St Clair, Australia's deepest freshwater lake. Tonight's bush camp is at Highland Lakes. (BL)

Day 5: Highland Lakes to Hobart

Visit Mount Field National Park, enjoy a hike to Lady Barron Falls, Russell Falls and Horseshoe Falls. Head to The Styx Valley, home to some of Australia's tallest trees. Option to visit a wildlife sanctuary to view and learn about the platypus. Overnight in Hobart. (BL)

Day 6: Hobart

A free day to enjoy the endless choice of activities Hobart has to offer. Overnight in Hobart.

Day 7: Hobart to Cape Raoul

Today embark on a five hour bush walk to Cape Raoul on the Tasman Peninsula. Overnight at a bush camp. (LD)

Day 8: Freycinet National Park

Spend the day exploring Freycinet National Park. Hike up Mt Amos for outstanding views of spectacular Wineglass Bay. Explore remote beaches and take a dip in stunning waterholes. Overnight at a bush camp. (BLD)

Day 9: Freycinet National Park to Bay of Fires

Journey north to the white beaches of the Bay of Fires and take an afternoon hike high on the Blue Tier. Overnight at a bush camp. (BLD)

Day 10: Bay of Fires to Launceston

Enjoy an early morning bush walk in Blue Tier amongst beautiful temperate rainforest. After lunch, travel back to Launceston. (BL)

INCLUDES:

- 7 nights camping
- 2 nights hostel accommodation in Hobart
- Guided cave tour
- 4WD troop carrier or mini bus
- Camping equipment
- National park fees
- Meals as indicated (B = breakfast, L = lunch, D = dinner)
- Return transfers from Launceston accommodation

Departs: Mon, Fri from Launceston at 7:30am

Returns: 5.30pm



PRICE PER PERSON:	1 OCT 11 – 30 JUN 12	1 JUL 12 – 31 MAR 13
Adult	\$1660	\$1695

Not suitable for children under 14 years.

AUSTRALIAN TASAFARI 4WD CAMPING ADVENTURES ATSTAS

See Tasmania Attraction Pass



See Tasmania Attraction Pass provides free admission to a variety of leading attractions for a single price. It is the ideal travel companion for visitors, offering great value with up to 50% savings on retail admission and unbeatable convenience with your choice of attractions and a cashless smartcard for entry. Choose from a three, seven or ten day pass for unlimited access to over 40 attractions throughout Tasmania.

INCLUDES:

- 3, 7 or 10 day See Tasmania Attraction Pass
- Free entry to over 40 attractions throughout Tasmania including Tasmania's Hobart sightseeing tour, Port Arthur Historic Site, Tahune AirWalk, Huon Jet Boats, Seahorse World, Beaconsfield Mine & Heritage Centre, West Coast Wilderness Railway, Gordon River Cruise and many more.
- See Tasmania guide with maps

PRICE:	3 DAY	7 DAY	10 DAY
Adult	\$189	\$270	\$365
Child 4-15 years	\$131	\$189	\$255

Tasmania 5 in 1 Attraction Pack also available.

IVENTURE CARD AUSTRALIA IVCAUS

Tassie Dining Card



The Tassie Dining Card provides dining discounts for Tassie tourists in over 50 towns and suburbs across the state. A range of participating restaurants from casual to fine dining, cafés, bakeries, gourmet producers and vineyards are listed in the guide that comes with the Tassie Dining Card. The card is valid for 30 days from date of arrival in Tasmania and there is no limit on the number of times it can be used at the venues.

INCLUDES:

- At Platinum venues purchase one main meal and receive a second main meal FREE of equal or lesser value
- At Gold venues receive 20% off the total food and beverage account for up to six people
- At Silver venues receive 20% discount off the total food account for up to six people
- At Bakeries receive 15% off the total price of food and drinks for up to six people
- Receive great offers for up to six people on presentation of the Tassie Dining Card at participating vineyards and gourmet producers

PRICE:	
Per Card	\$44

THE TASSIE DINING CARD TDCTAS

National Parks – Holiday Pass



Tasmania's outstanding national park system offers visitors a wide choice of opportunities to discover spectacular landscapes, from highlands carved by glaciers to quiet, solitary beaches; from cool, silent rainforests to colourful, alpine wilderness wildflowers. Discover the natural and cultural values they protect and the enjoyment these parks offer with your Holiday Pass.

INCLUDES:

Entry for up to 8 weeks in any of the following national parks:

- Ben Lomond
- Cradle Mountain-Lake St Clair
- Douglas-Apsley
- Freycinet
- Hartz Mountains
- Kent Group
- Maria Island
- Mole Creek Karst
- Mt Field
- Mt William
- Narawntapu
- Rocky Cape
- South Bruny
- Southwest
- Strzelecki
- Tasman
- Walls of Jerusalem
- Wild Rivers

PRICE:	1 OCT 11 – 31 MAR 12
Vehicle and up to 8 people	\$60

TASMANIAN NATIONAL PARKS TNPBBA

Discovery Holiday Packages

COSY CABINS AND COTTAGES AROUND TASMANIA



Standard Cabin



Standard Cabin



Superior Cabin

Discovery Holiday Packages offer value for money, quality self-contained cabins in a great range of holiday parks located across Tasmania. Each cabin boasts functional amenities and genuine service at great prices.

Enjoy gas log heated cabins on the edge of World Heritage Listed Lake St Clair National Park, cosy cottages and cabins on the banks of the Mersey River in Devonport, or be surrounded by national parks, wineries and family attractions at Hadspen in the Tamar Valley. Discovery Holiday Parks are conveniently located close to all the attractions of Hobart and Strahan.

Choose from Standard or Superior accommodation, (AAA rated 3 stars or above). Both cabin types sleep a minimum of four people, (two in a queen or double bed, two in a double or bunk bed). Some cabins sleep up to six people.

Each location provides a different range of recreational experiences and facilities in a relaxed holiday setting.

PROPERTY FEATURES:

- Barbecue
- Children's playground (except Cradle Mountain)
- Internet access ■ Kiosk

CABIN FEATURES:

- Heating ■ Tea/coffee making facilities
- Kitchen with microwave
- Sofa or lounge area ■ Television
- Dining table and chairs

STANDARD CABIN

Good value cabins which are comfortable with basic features.

SUPERIOR CABIN

Quality cabins which are well appointed with above average features.

Locations

Hobart and Surrounds:	DHPHBA
Hobart (Risdon)	
Launceston, Tamar and the North:	DHPLST
Hadspen	
Western Wilderness:	
Cradle Mountain	DHPCMN
Strahan	DHPSRN
North West Coast: Devonport	DHPDPO

PRICE PER ROOM

1 OCT – 24 DEC 11	ADULTS	1 NT	2 NTS	3 NTS
Standard Cabins	1 to 2	124	236	354
Superior Cabins	1 to 4	145	276	414
25 DEC 11 – 31 JAN 12	ADULTS	1 NT	2 NTS	3 NTS
Standard Cabins	1 to 2	166	316	474
Superior Cabins	1 to 4	187	356	534
1 FEB – 31 MAY 12	ADULTS	1 NT	2 NTS	3 NTS
Standard Cabins	1 to 2	145	276	414
Superior Cabins	1 to 4	166	316	474
1 JUN – 31 AUG 12	ADULTS	1 NT	2 NTS	3 NTS
Standard Cabins	1 to 2	113	216	324
Superior Cabins	1 to 4	134	256	384

Other prices apply 1 Sep 12 – 31 Mar 13. Superior cabins not available at Cradle Mountain and Strahan.

Children 0 to 11 years – adult prices apply.

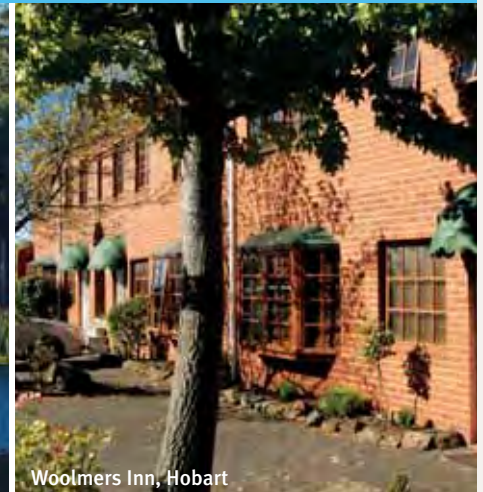
Max capacity Varies between properties.

Accommodation Passes

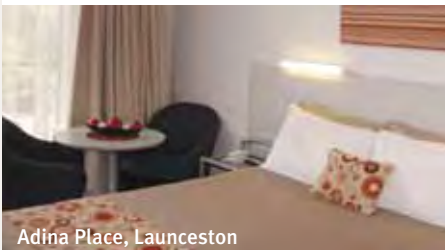
TasVillas Group Accommodation Pass



Silver Ridge Retreat, Mt Roland



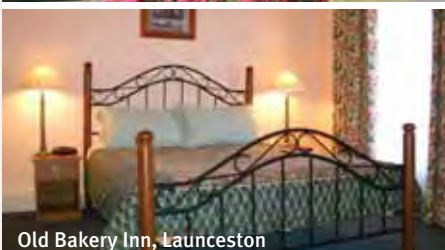
Woolmers Inn, Hobart



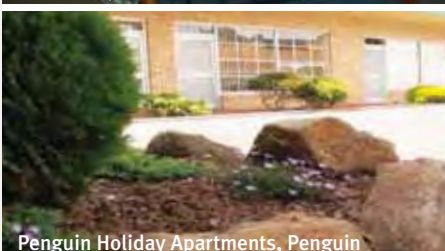
Adina Place, Launceston



Sharonlee Strahan Villas



Old Bakery Inn, Launceston



Penguin Holiday Apartments, Penguin

TasVillas Group is a Tasmanian owned and operated company with over 30 years experience in providing travellers to Tasmania the best possible holiday experience. As one of the state's largest accommodation groups, TasVillas Group offers a comprehensive range of properties situated in prime locations to suit round the state, self-drive itineraries.

With accommodation styles ranging from motels, to fully self-contained apartments, deluxe hotels and premium villas TasVillas Group has accommodation to suit a range of styles and budgets. Design an individual package, by choosing from the following four accommodation chains.

TasVillas: 3 to 4 star self-contained properties. A favourite with families. **TASTAS**

Motel Plus: 3 to 3.5 star motel rooms for the budget conscience traveller. **MOTTAS**

Select Villas: 4 to 4.5 star self-contained apartments. Contemporary décor and ideally situated around the state. **SLVTAS**

Select Hotels: 4 to 4.5 star high quality hotel rooms in prime city locations. **SLHTAS**

Locations

TASVILLAS

Launceston: Tamar River Villas
Penny Royal Apartments
Adina Place
Alanvale Apartments
Aberdeen Court

Hobart: Woolmers Inn

Tasman Peninsula: Parsons Bay Retreat

Western Wilderness: Silver Ridge Retreat
Sharonlee Strahan Villas

North West: Arthur River Holiday Units
Penguin Holiday Apartments

MOTEL PLUS

Launceston: Old Bakery Inn
Alanvale Motel & Apartments

Hobart: Waterfront Lodge

Tasman Peninsula: Parsons Bay Retreat

SELECT VILLAS

Launceston: Old Bakery Motor Inn

Hobart & Surrounds: Fountainside Hotel
St Ives Motel & Apartments
Port Huon Cottages
Hatchers Richmond Manor

Stanley: On The Terrace

SELECT HOTELS

Launceston: Penny Royal Hotel

Hobart & Surrounds: Hobart Macquarie
Fountainside Hotel
Hatcher's Richmond Manor

SUNLOVER BONUS

FREE Tassie Dining Card for stays of 7 nights.

FREE National Parks Pass for stays of 12 nights.

All offers valid 1 Oct 11 – 23 Dec 11, 1 May 12 – 23 Dec 12.
Offers not combinable.

PRICE PER ROOM	ADULTS	1 OCT – 23 DEC 11			24 DEC 11 – 31 MAR 12			1 APR – 31 MAY 12			1 JUN – 31 AUG 12			1 SEP – 23 DEC 12			24 DEC 12 – 31 MAR 13		
		3 NTS	7 NTS	12 NTS	3 NTS	7 NTS	12 NTS	3 NTS	7 NTS	12 NTS	3 NTS	7 NTS	12 NTS	3 NTS	7 NTS	12 NTS	3 NTS	7 NTS	12 NTS
TasVilla Pass																			
1 Bedroom	1 to 2	390	882	1464	426	966	1608	372	840	1392	348	784	1296	390	882	1464	426	966	1608
2 Bedroom	1 to 4	495	1127	1884	531	1211	2028	471	1071	1788	435	987	1644	495	1127	1884	531	1211	2028
Motel Plus Pass																			
Ensuite Room	1 to 2	360	812	1344	420	952	1584	360	812	1344	330	742	1224	360	812	1344	420	952	1584
Select Villas Pass																			
1 Bedroom/Studio	1 to 2	492	1141	1908	576	1316	2208	459	1043	1740	441	1001	1668	492	1141	1908	576	1316	2208
2 Bedroom	1 to 4	582	1330	2232	705	1610	2712	558	1274	2124	546	1246	2076	582	1330	2232	705	1610	2712
Select Hotels Pass																			
Ensuite Room	1 to 2	444	1008	1680	528	1204	2016	453	1029	1692	429	973	1644	444	1008	1680	528	1204	2016

Surcharges and minimum night stays apply to some properties 20 Dec 11 – 20 Jan 12, 6 – 10 Apr 12, 20 Dec 12 – 20 Jan 13.

Children 0 to 2 years – cots free of charge. 3 to 14 years – adult prices apply.

Max Capacity Varies between properties.

Innkeepers Discovery Inns



Fox And Hounds Inn, Port Arthur



Stanley Seaview Inn



Sandor's on the Park, Launceston

When you stay in a Discovery Inn, Tasmania's wilderness, heritage and vibrant cities are right on your doorstep. The convenient state wide locations allow you to experience all the best Tasmania has to offer at a price that will not break the budget.

Set down your bags in a room overlooking crystal seas or emerald-cloaked farmland. Sleep surrounded by history in some of Tasmania's most intriguing heritage towns. Stroll to restaurants, galleries and shopping in the heart of a beautiful Tasmanian city.

All rooms feature ensuites, tea and coffee making facilities with most providing the convenience of bars and restaurants.

Locations

Devonport:	Edgewater
Hobart:	Hobart Airport Hotel Motel 429 Sandy Bay Road Shoreline Hotel/Motel Southern Lights Hotel
Launceston:	Sandors on the Park
Port Arthur:	Fox and Hounds Inn
Queenstown:	Westcoaster Motel (formerly Chancellor Inn)
Sheffield:	Kentish Hills Retreat
Stanley:	Stanley Seaview Inn
Swansea:	Swansea Waterloo Inn
Tullah:	Tullah Lakeside Lodge
Ulverstone:	The Lighthouse Hotel

PRICE PER ROOM

Period	ADULTS	3 NTS	5 NTS	7 NTS
1 OCT 11 – 23 DEC 11, 1 OCT 12 – 21 DEC 12 Hotel	1 to 2	390	650	910
1 FEB 12 – 30 APR 12, 1 FEB 13 – 31 MAR 13 Hotel	1 to 2	420	700	980
1 MAY 12 – 30 SEP 12 Hotel	1 to 2	360	600	840
22 DEC 12 – 31 JAN 13 Hotel	1 to 2	450	750	1050

Other prices apply 24 Dec 11 – 31 Jan 12. Minimum night stays may apply to individual properties.

Children 0 to 2 years – cot free of charge.
3 to 14 years – adult prices apply.

Max capacity Varies between properties.

Innkeepers Intimate Retreats



Huon Bush Retreat, Huon Valley



Horizons Apartments, Stanley

Make your Tasmanian holiday a true escape at an Innkeepers Intimate Retreat.

Choose from a premium suite in a grand heritage property, secluded wilderness cabins, or stylish, deluxe spa hideaways. Spoil yourself with luxurious comfort, excellent facilities and the extra touches that will complete your stay.

As with all Innkeepers properties, you can find Intimate Retreats throughout the island, within reach of Tasmania's inspiring experiences.

Savour Tasmania's culinary pleasures – dine in style in fine restaurants, right outside your door. Absorb the tranquillity of the wilderness, sample the bounty at local vineyards, discover fine Tasmanian art and crafts and unravel rich stories and local heritage in the historic towns and villages.

With Innkeepers Intimate Retreats you'll experience quality, style and a truly rejuvenating holiday.



Salamanca Terraces, Hobart

Locations

Hobart:	Lenna of Hobart The Old Woolstore Salamanca Terraces
Huon Valley:	Huon Bush Retreats
Stanley:	Horizon Apartments
Strahan:	Gordon Gateway

PRICE PER ROOM

Period	ADULTS	3 NTS	5 NTS	7 NTS
1 OCT 11 – 31 MAR 12 Hotel	1 to 2	990	1650	2310

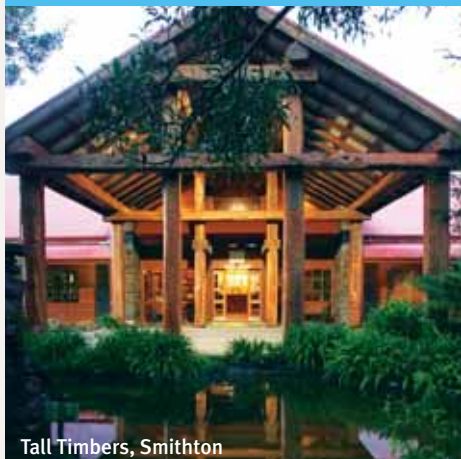
Minimum night stays may apply to individual properties. Not available 1 Apr 12 – 31 Mar 13.

Children 0 to 2 years – cot free of charge.
3 to 14 years – adult prices apply.

Max capacity Varies between properties.

Accommodation Passes

Innkeepers Hotels



Tall Timbers, Smithton



Lenna of Hobart



Tidal Waters Resort, St Helens

Innkeepers Hotels offer stylish accommodation, from award winning heritage properties and coastal retreats to the contemporary elegance of a city waterfront hotel. Enjoy fine Tasmanian cuisine in your hotel's bistro or à la carte restaurant after a day exploring the distinctive heritage and wilderness that surrounds you.

Experience the unique ambience and character of these stylish properties, each providing an ideal base from which to explore Tasmania's rich heritage and pristine wilderness. Stay with Innkeepers Hotels, where quality and value go hand in hand with the welcoming comforts expected by the discerning traveller.

Locations

- Burnie: Beachfront Voyager Motor Inn
 - Devonport: Edgewater
 - Hobart: Hotel Collins
Lenna of Hobart
Quest Savoy Hobart
Quest Waterfront
The Old Woolstore †
 - Launceston: Hotel Charles
Rosevears Vineyard Retreat
 - Queenstown: Westcoaster Motel (formally Chancellor Inn)
 - Sheffield: Kentish Hills Retreat
 - Smithton: Tall Timbers
 - St Helens: Tidal Waters Resort
 - Strahan: Motel Strahan
 - Swansea: Swansea Waterloo Inn
- † Available until 31 Mar 12.



Quest Savoy Hobart

PRICE PER ROOM

1 OCT 11 – 23 DEC 11, 1 OCT 12 – 21 DEC 12	ADULTS	3 NTS	5 NTS	7 NTS
Hotel	1 to 2	540	900	1260
1 MAY 12 – 30 SEP 12	ADULTS	3 NTS	5 NTS	7 NTS
Hotel	1 to 2	498	830	1162
24 DEC 11 – 30 APR 12, 22 DEC 12 – 31 MAR 13	ADULTS	3 NTS	5 NTS	7 NTS
Hotel	1 to 2	630	1050	1470

Flexi Holidays are available 1 May – 30 Sep 12. Minimum night stays may apply to individual properties.

Children 0 to 2 years – cot free of charge.
3 to 14 years – adult prices apply.

Max capacity Varies between properties.

SUNLOVER BONUS

FREE \$50 fuel voucher for stays of 5 nights.

FREE \$75 fuel voucher for stays of 7 nights.

FREE \$100 fuel voucher for stays of 10 nights.

FREE \$150 fuel voucher for stays of 14 nights.

All offers valid 3 Oct – 23 Dec 11, 1 May – 21 Sep, 8 Oct – 21 Dec 12. Offers not combinable.

Innkeepers Premium Hotels



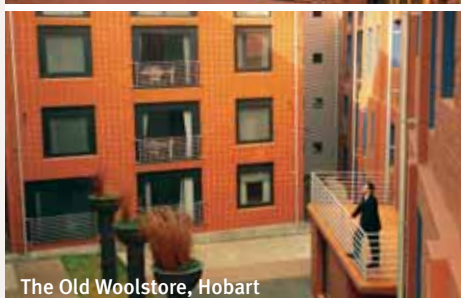
Lenna of Hobart



Hotel Charles, Launceston



Salamanca Terraces, Hobart



The Old Woolstore, Hobart

Innkeepers Premium Hotels offer superior comfort and location from award winning heritage properties, to the contemporary elegance of a city waterfront hotel. Enjoy fine Tasmanian cuisine in your hotel's à la carte restaurant after a day exploring the distinctive heritage and wilderness that surrounds you.

Experience the unique ambience and character of these stylish properties, each providing an ideal base from which to explore Tasmania's rich heritage and pristine wilderness. Stay with Innkeepers Premium Hotels, where quality and value go hand in hand with the welcoming comforts expected by the discerning traveller.

Locations

- Hobart: Hotel Collins
Lenna of Hobart
The Old Woolstore
Salamanca Terraces
- Launceston: Hotel Charles
- St Helens: Tidal Waters Resort
- Strahan: Risby Cove

PRICE PER ROOM

1 OCT 11 – 23 DEC 11, 1 OCT 12 – 21 DEC 12	ADULTS	3 NTS	5 NTS	7 NTS
Hotel	1 to 2	630	1050	1470
24 DEC 11 – 30 APR 12	ADULTS	3 NTS	5 NTS	7 NTS
Hotel	1 to 2	690	1150	1610
1 MAY 12 – 30 SEP 12	ADULTS	3 NTS	5 NTS	7 NTS
Hotel	1 to 2	540	900	1260
22 DEC 12 – 31 MAR 13	ADULTS	3 NTS	5 NTS	7 NTS
Hotel	1 to 2	720	1200	1680

Flexi Holidays are available 1 May – 30 Sep 12. Minimum night stays may apply to individual properties.

Children 0 to 2 years – cot free of charge.
3 to 14 years – adult prices apply.

Max capacity Varies between properties.

SUNLOVER BONUS

FREE \$50 fuel voucher for stays of 5 nights.

FREE \$75 fuel voucher for stays of 7 nights.

FREE \$100 fuel voucher for stays of 10 nights.

FREE \$150 fuel voucher for stays of 14 nights.

All offers valid 3 Oct – 23 Dec 11, 1 May – 21 Sep, 8 Oct – 21 Dec 12. Offers not combinable.

Innkeepers Apartments



Cradle Mountain Wilderness Village



Marsden Court, Strahan



Quest Trinity House, Hobart

In your self-contained Innkeepers Apartment, you have the freedom and flexibility to cater for yourself or enjoy the choice of great restaurants and bars in most of the properties.

In your well appointed kitchen you can indulge in the freshest Tasmanian produce, just the way you like it. Bring home a dozen plump oysters, straight from the sea, linger over a fine Tasmanian pinot and platter of rich mature cheeses, or create your own island feast from that fresh local produce you just bought at the farm gate.

Locations

Bicheno:	Diamond Island Resort
Dover:	Driftwood Cottages^^
Cradle Mountain:	Cradle Mountain Wilderness Village †
Hobart:	Quest Trinity House Quest Waterfront
Port Arthur:	Fox and Hounds Apartments Stewarts Bay Lodge^^
Sheffield:	Kentish Hills Retreat
Smithton:	Tall Timbers
Strahan:	Gordon Gateway Marsden Court
Swansea:	Swansea Beach Chalets
Tarraleah:	Cottages at Tarraleah^

† A surcharge of \$30 per room per night applies, payable direct.

^ Available until 31 Mar 12.

^^ 2 night minimum stay applies.



Diamond Island Resort, Bicheno

PRICE PER ROOM

Period	ADULTS	3 NTS	5 NTS	7 NTS
1 OCT 11 – 23 DEC 11				
Studio/1 Bedroom	1 to 2	540	900	1260
2 Bedroom	1 to 4	720	1200	1680
24 DEC 11 – 30 APR 12				
Studio/1 Bedroom	1 to 2	660	1100	1540
2 Bedroom	1 to 4	840	1400	1960
1 MAY 12 – 30 SEP 12				
Studio/1 Bedroom	1 to 2	498	830	1162
2 Bedroom	1 to 4	678	1130	1582
1 OCT 12 – 21 DEC 12				
Studio/1 Bedroom	1 to 2	570	950	1330
2 Bedroom	1 to 4	750	1250	1750
22 DEC 12 – 31 MAR 13				
Studio/1 Bedroom	1 to 2	690	1150	1610
2 Bedroom	1 to 4	870	1450	2030

Flexi Holidays are available 1 May – 30 Sep 12. Minimum night stays may apply to individual properties.

Children 0 to 2 years – cot free of charge.
3 to 14 years – adult prices apply.

Max capacity Varies between properties.

SUNLOVER BONUS

FREE \$50 fuel voucher for stays of 5 nights.

FREE \$75 fuel voucher for stays of 7 nights.

FREE \$100 fuel voucher for stays of 10 nights.

FREE \$150 fuel voucher for stays of 14 nights.

All offers valid 3 Oct – 23 Dec 11, 1 May – 21 Sep, 8 Oct – 21 Dec 12. Offers not combinable.

Innkeepers Premium Apartments



Stewarts Bay Lodge, Port Arthur



Quest Launceston



The Old Woolstore, Hobart

Mix and match your choice of properties to create the ultimate in tailor made itineraries. All you need to do is pre book a minimum of three nights accommodation, which need not be at one property. Simply select from any of these Innkeepers Premium Apartments.

These superb properties offer a great choice of self contained accommodation with superior comfort in iconic locations including Salamanca Place.

Stewarts Bay Lodge at Port Arthur boasts great quality food and wine and is a short coastal walk to the Port Arthur Historic Site.

For a true wilderness retreat visit Cradle Mountain Wilderness Village and explore Cradle Mountain-Lake St Clair National Park.

Locations

Bicheno:	Diamond Island Resort
Cradle Mountain:	Cradle Mountain Wilderness Village †
Hobart:	Quest Trinity House Salamanca Terraces The Old Woolstore
Launceston:	Quest Launceston
Port Arthur:	Stewarts Bay Lodge
Smithton:	Tall Timbers
Tamar Valley:	Rosevears Vineyard Retreat
Tarraleah:	Cottages at Tarraleah

† A surcharge of \$30 per room per night applies, payable direct.



Rosevears Vineyard Retreat, Tamar Valley

PRICE PER ROOM

Period	ADULTS	3 NTS	5 NTS	7 NTS
1 OCT 11 – 23 DEC 11, 1 OCT 12 – 21 DEC 12				
Studio/1 Bedroom	1 to 2	780	1300	1820
2 Bedroom	1 to 4	990	1650	2310
24 DEC 11 – 30 APR 12, 22 DEC 12 – 31 MAR 13				
Studio/1 Bedroom	1 to 2	840	1400	1960
2 Bedroom	1 to 4	1050	1750	2450
1 MAY 12 – 30 SEP 12				
Studio/1 Bedroom	1 to 2	750	1250	1750
2 Bedroom	1 to 4	960	1600	2240

Minimum night stays may apply to individual properties.

Children 0 to 2 years – cot free of charge.
3 to 14 years – adult prices apply.

Max capacity Varies between properties.

SUNLOVER BONUS

FREE \$50 fuel voucher for stays of 5 nights.

FREE \$75 fuel voucher for stays of 7 nights.

FREE \$100 fuel voucher for stays of 10 nights.

FREE \$150 fuel voucher for stays of 14 nights.

All offers valid 3 Oct – 23 Dec 11, 1 May – 21 Sep, 8 Oct – 21 Dec 12. Offers not combinable.

Accommodation Passes

Choice Hotels Australasia



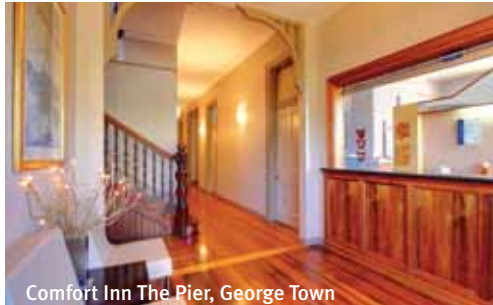
Clarion Hotel City Park Grand, Launceston



Comfort Inn Gold Rush, Queenstown



Comfort Inn Coach House, Launceston



Comfort Inn The Pier, George Town



Quality Hotel Colonial Launceston



Comfort Inn Sunrise, Devonport



Comfort Inn Port Arthur



Quality Hotel Hobart Airport



Quality Inn Heritage Edenholme Grange, Launceston

Free Wheel around Tasmania with Choice Hotels on your next self drive holiday.

Choice Hotels offers you the choice of either pre-booking your accommodation to enjoy peace of mind that your accommodation is confirmed or free-wheel and travel where you want, when you want with open-dated Hotel Vouchers (HotelPass).

Choice Hotels offers a variety of hotels in Tasmania under the brands of Comfort, Quality and Clarion in six destinations around the island.

PRE-BOOKED ROOM NIGHTS

If you prefer to have your accommodation booking confirmed prior to travelling, then simply pre-book your accommodation. Great rates are available at a wide range of accommodation, from traditional hotel rooms to full-service suites, so choose a room type to suit your needs.

OPEN-DATED HOTELPASS

Choice HotelPass is a convenient and flexible way to travel. You can enjoy the freedom of travelling and staying where you want, when you want (subject to availability). All properties are colour coded allowing you to select the accommodation to suit your specific requirements. Simply make the reservation as you go (pre-booked accommodation is recommended during high season Nov – Mar).

- **Yellow:** Generally Econo Lodge and Comfort hotels found in suburban or regional locations.
- **Pink:** Comfort or Quality hotels in suburban or regional areas.
- **Green:** Comfort or Quality hotels in city centres, key regional areas or suburban locations.
- **Blue:** Generally Quality hotels. Found in city centre, resort and key regional locations.

Locations

Hobart:	Quality Hobart Midcity Hotel Quality Hotel Hobart Airport
Port Arthur:	Comfort Inn Port Arthur
Devonport:	Comfort Inn Sunrise Quality Hotel Gateway
George Town:	Comfort Inn The Pier
Launceston:	Quality Inn Heritage Edenholme Grange Clarion Hotel City Park Grand Quality Hotel Colonial Launceston Comfort Inn Coach House Launceston
Queenstown:	Comfort Inn Gold Rush

HotelPass Season Validity

- Quality Hobart Midcity Hotel
■ 1 – 31 Oct 11, 1 Apr – 31 Oct 12
■ 1 Nov 11 – 31 Mar 12, 1 Nov 12 – 31 Mar 13

- Quality Hotel Hobart Airport
■ 1 Oct 11 – 31 Mar 13

- Comfort Inn Port Arthur
■ 1 Oct 11 – 31 Mar 12
■ 1 Apr 12 – 31 Mar 13

- Comfort Inn Sunrise, Devonport
■ 1 Oct 11 – 31 Mar 13

- Quality Hotel Gateway, Devonport
■ 1 Oct 11 – 31 Mar 13

- Comfort Inn The Pier, George Town
■ 1 Oct 11 – 31 Mar 13

- Quality Inn Heritage Edenholme Grange, Launceston
■ 1 – 31 Oct 11, 1 Apr – 31 Oct 12
■ 1 Nov 11 – 31 Mar 12, 1 Nov 12 – 31 Mar 13

- Clarion Hotel City Park Grand, Launceston
■ 1 – 31 Oct 11, 1 Apr – 31 Oct 12
■ 1 Nov 11 – 31 Mar 12, 1 Nov 12 – 31 Mar 13

- Quality Hotel Colonial Launceston
■ 1 – 31 Oct 11, 1 Apr – 31 Oct 12
■ 1 Nov 11 – 31 Mar 12, 1 Nov 12 – 31 Mar 13

- Comfort Inn Coach House Launceston
■ 1 – 31 Oct 11
■ 1 Nov 11 – 31 Mar 12
■ 1 Apr 12 – 31 Mar 13

- Comfort Inn Gold Rush, Queenstown
■ 1 – 31 Oct 11
■ 1 Nov 11 – 31 Mar 13

PRICE PER ROOM PER NIGHT

OPEN DATED PASS	ADULTS	1 OCT 11 – 31 MAR 13
Yellow	1 to 2	122
Pink	1 to 2	153
Green	1 to 2	177
Blue	1 to 2	211

Additional person and Pre-booked Room Night prices also available.

Children 0 to 12 years – up to 2 children free when sharing with an adult and using existing bedding.

Max Capacity Varies between properties.

CHOAUS

Avis



Why not add Avis to your travel plans and make the most of your holiday by enjoying the flexibility and convenience that an Avis car rental provides.

Situated at all major airport and city locations and offering a wide range of late model vehicles to choose from, all at great rates, renting with Avis is sure to make your holiday escape more enjoyable.

All Avis vehicles are air-conditioned and come with 24 hour roadside assistance. Plus you get unlimited kilometres in Metropolitan areas as well as free maps to help you find your destination.



PRICES INCLUDE

- Unlimited kilometres • Loss Damage Waiver
- Administration Fee • Vehicle Registration Fee • GST

PRICES DO NOT INCLUDE

- Excess Reduction • Concession Recovery Fee/ Premium Location Surcharge • Tolls • Fuel

CONDITIONS

All prices are based on a 24 hour rental period (e.g. pick-up 9am the first day; drop off 9am the next day). Any time over the 24 hour period will incur an additional charge.

EXCESS

An Excess of \$1,950 applies to drivers of all vehicles, with the exception of Group W, which has an Excess of \$5,500. Optional Excess Reduction can be purchased direct for an additional fee of \$19.80 per day, or \$33 per day for Group W. This fee reduces the Excess to \$330, or \$1,100 for Group W.

MINIMUM AGE AND LICENCE REQUIREMENTS

The minimum age for drivers of vehicle groups X, A, B, C and D is 21 years. Drivers aged 21 to 24 years inclusive are required to pay a \$27.50 per day surcharge (to a maximum of \$192.50), which is payable directly to Avis at the time of rental. For all other vehicle groups, the minimum age for drivers is 25 years.

Drivers must hold an open licence and have held that licence for at least 12 months.

VEHICLE TYPES

Vehicles in particular groups are subject to availability and may vary by location. A similar vehicle to those pictured may be substituted. Not all vehicle types are available at all locations.

SECURITY DEPOSIT

A credit card imprint is required when you take delivery of your vehicle to cover any additional costs such as petrol, child seats, etc. If you are not paying by credit card, a cash deposit is required and you will need to be Cash Qualified before collecting the vehicle.

Group X – Nissan Micra 3 Door Hatch (or similar)



- Manual • 3 Door hatch • 4 Cylinder • Air-conditioning
- Radio/CD • Power steering/locks • Tilt wheel • Dual airbags

Group A – Hyundai Getz 5 Door Hatch (or similar)



- Manual • 5 Door hatch • 4 Cylinder • Air-conditioning
- Radio/CD • Power steering/locks • Tilt wheel • Dual airbags

Group B – Hyundai i20 5 Door Hatch (or similar)



- Automatic • 5 Door hatch • 4 Cylinder • Air-conditioning
- Radio/CD • Power steering/locks • Tilt wheel • Dual airbags

Group C – Kia Cerato 5 Door Hatch (or similar)



- Automatic • 5 Door hatch
- 4 Cylinder • Air-conditioning • Radio/CD • Power steering
- Central locking • Tilt wheel • Dual airbags

Group D – Holden Cruze Sedan (or similar)



- Automatic • 4 Door sedan • 4 Cylinder • Air-conditioning • Radio/CD
- Power steering/windows • Central locking • Tilt wheel • Dual airbags

Group E – Hyundai i45 (or similar)



- Automatic • 4 Door sedan • 4/6 Cylinder • Air-conditioning
- Radio/CD • Power steering/windows • Central locking • Tilt wheel • Dual airbags • Cruise control • Traction control • ABS

Group F – Holden SV6 Wagon (or similar)



- Automatic • 5 Door wagon • 6 Cylinder • Air-conditioning
- Radio/CD • Power steering/windows • Central locking
- Tilt wheel • Dual and side impact airbags • Cruise control
- Traction control • ABS

Group P – Holden SV6 Sports Sedan (or similar)



- Automatic • 4 Door sedan • 6 Cylinder • Air-conditioning
- Radio/CD • Power steering/windows • Central locking • Tilt wheel • Dual airbags • Cruise control • Traction control • ABS

Group V – Kia Grand Carnival (or similar)



- Automatic • 5 Door van • 4 Cylinder
- Air-conditioning • Radio/CD • Power steering/locks/windows
- Tilt wheel • Dual airbags • Dual sliding doors

Group K – Toyota Rav 4 (or similar)



- Automatic • 5 Door AWD • 4 Cylinder • Air-conditioning
- Radio/CD • Power steering/locks/windows • Tilt wheel
- Dual airbags

Group W – Mitsubishi Pajero 4WD (or similar)



- Automatic • 5 Door 4WD • 6 Cylinder • Air-conditioning
- Radio/CD • Power steering/windows • Central locking
- Tilt wheel • Dual airbags

Overnight Bag Medium Suitcase Large Suitcase

PRICE PER CAR PER DAY		1 OCT – 24 DEC 11, 11 JAN – 31 MAR 12			25 DEC 11 – 10 JAN 12			1 – 30 APR, 18 SEP – 21 DEC 12, 11 JAN – 31 MAR 13			1 MAY – 17 SEP 12			22 DEC 12 – 10 JAN 13		
GROUP	CAR TYPE	2-3 DAYS	4-6 DAYS	7+ DAYS	2-3 DAYS	4-6 DAYS	7+ DAYS	2-3 DAYS	4-6 DAYS	7+ DAYS	2-3 DAYS	4-6 DAYS	7+ DAYS	2-3 DAYS	4-6 DAYS	7+ DAYS
X	Nissan Micra	\$55	\$47	\$44	\$59	\$49	\$48	\$57	\$48	\$45	\$49	\$40	\$39	\$62	\$52	\$49
A	Hyundai Getz	\$59	\$49	\$47	\$64	\$53	\$50	\$61	\$50	\$48	\$52	\$43	\$40	\$66	\$54	\$52
B	Hyundai i20	\$60	\$50	\$45	\$65	\$54	\$52	\$62	\$52	\$49	\$53	\$44	\$41	\$67	\$55	\$53
C	Kia Cerato	\$67	\$54	\$50	\$73	\$59	\$57	\$68	\$55	\$51	\$58	\$48	\$45	\$75	\$61	\$58
D	Holden Cruze	\$77	\$63	\$55	\$87	\$70	\$67	\$79	\$65	\$56	\$68	\$55	\$51	\$89	\$72	\$68
E	Hyundai i45	\$88	\$74	\$65	\$99	\$82	\$78	\$90	\$76	\$67	\$77	\$62	\$53	\$102	\$84	\$80
F	Holden SV6 Wagon	\$95	\$81	\$72	\$118	\$95	\$90	\$97	\$86	\$74	\$83	\$69	\$59	\$121	\$98	\$93
P	Holden SV6 Sports Sedan	N/A	N/A	N/A	N/A	N/A	N/A	\$102	\$88	\$79	\$89	\$75	\$66	\$114	\$96	\$92
V	Kia Grand Carnival	\$113	\$92	\$88	\$123	\$99	\$95	\$116	\$94	\$90	\$98	\$80	\$74	\$127	\$103	\$98
K	Toyota Rav 4	\$79	\$65	\$62	\$87	\$70	\$68	\$81	\$67	\$63	\$68	\$57	\$54	\$89	\$72	\$70
W	Mitsubishi Pajero	\$122	\$108	\$98	\$172	\$139	\$132	\$125	\$111	\$101	\$105	\$90	\$81	\$177	\$143	\$136

Prices are valid for collection of vehicles from Hobart, Launceston, Devonport and Burnie city depots. Other prices apply for collection of vehicles from Hobart Airport, Launceston Airport, Devonport Airport or Wynyard Airport. Ask your travel agent for Airport Inclusive prices that include the Concession Recovery Fee/Premium Location Surcharge. Not all vehicle types are available at all locations. Check with your travel agent at time of booking. Note: Vehicles rented in mainland Australia may not be taken to Tasmania or vice versa. Vehicles may not be taken to Bruny Island or driven above the snow line.

AVITAA/AVITAS

Campervan Hire

Britz Australia Campervan Rentals



Explorer

Britz Australia is the largest operator of self drive, campervans in Australia. Campervans come equipped with microwave, gas stove, refrigerator, radio, CD player and most models feature a shower and toilet.

When you travel Australia with Britz, every road takes you on a new adventure, with 11 branches Australia wide. The branch in Tasmania is located in Hobart.

Britz Campervans can be taken on the Spirit of Tasmania with the flexibility of picking up on the mainland and drop-off in Hobart and vice versa.

PRICES INCLUDE

- Unlimited kilometres
- Vehicle Liability Cover (excess applies)
- Administration fee ■ Extra driver fees
- 24/7 customer care helpline
- Linen and bedding ■ Maps
- Kitchen kit (cutlery, crockery etc)
- General equipment (broom, dust pan etc)
- Camping ground guides
- 10% discount at BIG4 parks powered sites

PRICES DO NOT INCLUDE

- One way fees ■ Liability (excess) Reduction option ■ Fuel
- Airport Concession Fee of \$20 per hire (Hobart Airport pick-up only)

CONDITIONS

Minimum age for drivers is 21 years.

Minimum rental period is five days for return rentals and seven or more days for one way rentals, dependant on collection and return location, except 15 Dec 11 – 5 Jan 12 and 15 Dec 12 – 5 Jan 13 when the minimum rental period is 10 days for Voyager, 4WD Safari, Explorer, Escape, Renegade, Maverick and Frontier vehicles and 7 days for all other vehicle types. One way rental fees apply.

Britz Bonus Pack including nil liability, one way fee, gas bottle, table, chairs and baby or booster seat available on application.

All hires are subject to Britz Australia Campervan and 4WD 2011/12/13 rental terms and conditions.

AREA RESTRICTIONS

Driving area restrictions apply to some vehicles. 2WD campervans can only be driven on sealed roads. 4WD vehicles may also be driven on recognised unsealed roads.

PRICE PER VEHICLE PER CALENDAR DAY

VEHICLE TYPE	SLEEPS	1 – 31 OCT 11	1 NOV – 14 DEC 11	15 DEC 11 – 14 JAN 12	15 JAN – 31 MAR 12	1 – 30 APR 12	1 MAY – 30 JUN 12	1 JUL – 30 SEP 12	1 – 31 OCT 12	1 NOV – 15 DEC 12	16 DEC 12 – 14 JAN 13	15 JAN – 31 MAR 13
HiTop	2 to 3	\$146	\$135	\$170	\$124	\$110	\$79	\$119	\$153	\$142	\$179	\$130
Voyager	4	\$178	\$167	\$205	\$151	\$142	\$110	\$165	\$187	\$175	\$215	\$159
Elite	2	\$215	\$189	\$217	\$172	\$158	\$124	\$175	\$215	\$198	\$228	\$181
4WD Bushcamper	2 to 3	\$204	\$189	\$184	\$159	\$185	\$193	\$244	\$214	\$198	\$193	\$167
4WD Safari	5	\$213	\$200	\$194	\$167	\$189	\$198	\$250	\$224	\$210	\$204	\$175
4WD Challenger	2	\$214	\$199	\$193	\$168	\$195	\$203	\$254	\$225	\$209	\$203	\$176
Explorer	4	\$286	\$265	\$319	\$226	\$217	\$169	\$272	\$299	\$278	\$331	\$237
Maverick	4	\$295	\$270	\$325	\$235	\$217	\$172	\$269	\$299	\$284	\$335	\$239
Escape	5	\$312	\$280	\$336	\$247	\$232	\$187	\$295	\$309	\$294	\$353	\$259
Renegade	6	\$314	\$282	\$338	\$249	\$237	\$189	\$299	\$330	\$293	\$355	\$259
Frontier	6	\$319	\$291	\$346	\$258	\$245	\$198	\$307	\$335	\$299	\$355	\$271

Reduced prices apply for rentals of 21 days and over.



HITOP

- Manual transmission
- Air-conditioned driver's cabin
- Large double and single bed
- Gas stove
- Microwave
- Refrigerator
- Fold out table



ELITE

- Automatic transmission
- Air-conditioned driver's and main cabin
- Double bed ■ Gas stove
- Microwave ■ Refrigerator
- Shower and toilet ■ Safe
- Hot and cold pressurised water



MAVERICK

- Automatic transmission
- Air-conditioned driver's and main cabin
- Two double beds
- Gas stove ■ Microwave
- Refrigerator ■ Shower and toilet
- TV/DVD ■ Awning



ESCAPE

- Automatic transmission
- Air-conditioned driver's and main cabin
- Two double and one single bed
- Gas stove ■ Microwave
- Refrigerator ■ Shower and toilet
- TV/DVD ■ Fitted awning ■ Safe



RENEGADE

- Automatic transmission
- Air-conditioned driver's and main cabin
- Three double beds or two single and two double beds
- Gas stove ■ Microwave
- Refrigerator ■ Awning ■ TV/DVD
- Shower and toilet ■ Safe



FRONTIER

- Automatic transmission
- Air-conditioned driver's and main cabin
- Three double beds
- Gas stove ■ Microwave
- Refrigerator ■ Shower and toilet
- TV/DVD
- Awning ■ Safe

Cruisin' Tasmania Motorhomes



Travelling by motorhome or campervan is a fantastic way to see Australia. Explore Tasmania in a comfortable, spacious, self-contained motorhome or campervan from Cruisin' Tasmania Motorhomes. Why be tied down to a daily schedule? In your own travelling home, you can plan your journey as you go.

Cruisin' Tasmania Motorhomes has an excellent range of campervans and motorhomes ideal for touring Tasmania. Pick-up is available from Hobart, Launceston and Devonport, for travel throughout Tasmania.

Each vehicle is supplied with bedding, linen, towels, cutlery, crockery, cooking utensils and cleaning equipment. Also provided are vehicle instructions, manual, maps and tourist information. Prices include unlimited kilometres and vehicle insurance (excess applies). A security bond applies for all rentals. Drivers must be a minimum of 21 years of age. One way rental fees apply.

PRICE PER VEHICLE PER CALENDAR DAY

VEHICLE TYPE	SLEEPS	1 - 15 APR 12	16 - 30 APR 12	1 MAY - 30 JUN 12	1 - 15 JUL 12	16 - 31 JUL 12	1 - 31 AUG 12	1 - 15 SEP 12
Hi-Top	2 to 3	\$100	\$85	\$48	\$65	\$60	\$55	\$70
Huntsman	2 to 3	\$150	\$140	\$90	\$120	\$100	\$95	\$120
Sandpiper	2	\$150	\$140	\$90	\$120	\$100	\$95	\$120
Birdsville	4	\$210	\$190	\$135	\$180	\$165	\$140	\$190
Discovery	6	\$220	\$205	\$145	\$190	\$175	\$145	\$200

Other prices apply 1 Oct 11 - 31 Mar 12, 16 Sep 12 - 31 Mar 13. Minimum rental period is seven days, except 21 Dec 11 - 5 Jan 12 when the minimum rental period is 10 days. \$200 each way relocation fee payable direct for rentals commencing or finishing in Launceston or Devonport. All hires are subject to Cruisin' Tasmania Motorhomes 2011/12/13 rental terms and conditions.

CTMTAS



HI-TOP CAMPERVAN

- Manual transmission
- Four cylinder petrol engine
- Electric heater
- Refrigerator
- Air-conditioned driver's cabin
- One double or two single beds
- Gas stove
- Microwave



SANDPIPER

- Automatic transmission
- Diesel engine
- Air-conditioned driver's cabin and saloon
- Double bed
- Gas stove
- Microwave
- Refrigerator
- TV



BIRDSDVILLE

- Manual transmission
- Four cylinder turbo diesel engine
- Air-conditioned driver's cabin and saloon
- Two double and one single bed
- Gas stove
- Microwave
- Refrigerator
- TV



DISCOVERY

- Automatic and manual transmission
- Four cylinder turbo diesel engine
- Air-conditioned driver's cabin and saloon
- Three double beds
- Gas stove
- Microwave
- Refrigerator
- TV/video

GoCheap Motorhomes



GoCheap Motorhomes are a locally owned family business with over 10 years experience.

The motorhomes and campervans are 4 to 6 years old, well maintained and routinely serviced. Each vehicle comes with everything you need to enjoy your Tasmanian holiday on a budget. Pick-up is available from Hobart, Launceston and Devonport, for travel throughout Tasmania. All motorhomes and campervans can only be driven on sealed roads.

The motorhomes and campervans come fully equipped with bedding, linen, cutlery, crockery, cooking equipment, 24 hour RACT roadside assistance, camp ground guide and road maps. Prices include unlimited kilometres and vehicle insurance (excess applies). A security bond applies for all rentals. Drivers must be a minimum of 21 years of age. One way rental fees apply.

PRICE PER VEHICLE PER CALENDAR DAY

VEHICLE TYPE	SLEEPS	1 - 15 APR 12	16 - 30 APR 12	1 MAY - 30 JUN 12	1 - 31 JUL 12	1 - 31 AUG 12	1 - 15 SEP 12	16 - 30 SEP 12
Hi-Top	2 to 3	\$85	\$70	\$43	\$45	\$43	\$50	\$70
Tamar	2	\$135	\$120	\$80	\$90	\$80	\$85	\$125
Henty	4	\$180	\$160	\$125	\$150	\$115	\$170	\$185
Derwent	6	\$190	\$170	\$135	\$165	\$125	\$180	\$200

Other vehicle types apply 1 Oct 11 - 31 Mar 12. Other prices apply 1 Oct 11 - 31 Mar 12, 1 Oct 12 - 31 Mar 13. Minimum rental period is seven days, except 21 Dec 11 - 5 Jan 12 when the minimum rental period is 10 days. \$200 each way relocation fee payable direct for rentals commencing or finishing in Launceston or Devonport. All hires are subject to GoCheap Motorhomes 2011/12/13 terms and conditions.

GCMHBA



HI-TOP CAMPERVAN

- Manual transmission
- Petrol engine
- Air-conditioned driver's cabin
- One double and one single bed
- Gas stove
- Refrigerator



TAMAR

- Manual transmission
- Diesel engine
- Air-conditioned driver's cabin and saloon
- One double bed
- Gas stove
- Refrigerator



HENTY

- Manual transmission
- Diesel engine
- Electric heater
- Air-conditioned driver's cabin
- Two double beds
- Gas stove
- Refrigerator



DERWENT

- Manual transmission
- Diesel engine
- Air-conditioned driver's cabin and saloon
- Three double beds
- Gas stove
- Refrigerator