



Kelvedon Beach

Household names abound along Tasmania's East Coast. St Helens, Bay of Fires, Bicheno, Swansea, Freycinet National Park and Wine Glass Bay – they're all here for your enjoyment, and they're all equally spectacular to visit.

Freycinet National Park is a bird-watcher's paradise. Look skyward for whitebellied sea eagles and yellow-tailed black cockatoos. At the Freycinet Peninsula, see the peaks of the Hazards, crystal clear water and white sand. It's postcard-perfect scenery. Nearby, a Wineglass Bay cruise is a great way to experience this natural wonder, or hike up Mt Amos for a supreme bird's-eye view of this paradise.

St Helens has a reputation for being a holiday town, which means there's plenty to keep you occupied. Cafés, restaurants, boutiques and of course a huge range of accommodation.

Fishing port Bicheno is an angler's dream, and divers reckon it's pretty special too. This pristine underwater environment spurs kelp forests and abundant fish life. Add some great bistros, cafés and taverns to the mix and you've got just the spot for a water-loving holiday.

Swansea is as pretty as its name sounds. In this coastal haven you'll see sandstone buildings built by convicts, some of which now serve as accommodation for visitors.

Seasoned travellers who think they've seen it all quickly change their tune when it comes to the Bay of Fires. Voted by Lonely Planet as the "world's hottest destination" for 2009, this 30km stretch along the north east coast is just the ticket to the holiday of a lifetime.

Our Favourites

Explore the granite peaks and coastlines of Freycinet National Park

Watch a colony of penguins at Diamond Island

Picnic on Wineglass Bay beach – voted one of the world's best

Walk the glistening white sands of the Bay of Fires

Take a full day cruise to Wineglass Bay



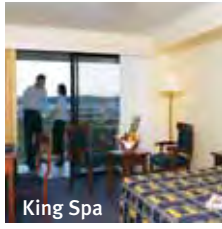
FIND YOUR ACCOMMODATION

REF.	APARTMENTS	PAGE
4	Amos House & Swansea Ocean Villas ♦♦♦♦	54
3	Craigie Knowe Cottage and Vineyard ♦♦♦♦	53
2	Diamond Island Resort ★★★★★	53
4	Swansea Beach Chalets ♦♦♦♦	54
4	Swansea Cottages ♦♦♦♦	54
REF.	HOTELS	PAGE
2	Beachfront at Bicheno ★★★★★	53
5	Freycinet Lodge ★★★★★	56
4	Piermont ♦♦♦♦	54
5	Saffire Freycinet ♦♦♦♦	55
1	Tidal Waters Resort ★★★★★	53



Bay of Fires

Tidal Waters Resort, St Helens ★★★★★



King Spa
Surrounded by scenic gardens and boasting a perfect waterfront setting. Just 15 minutes drive from the Bay of Fires and beautiful Binalong Bay.

Town Centre 500m
Map page 52 Ref. 1

1 Quail Street, St Helens

PROPERTY FEATURES:

- Restaurants (2)
- Room service (limited)
- Pool
- Guest laundry
- Parking
- Non smoking

ACCOMMODATION FEATURES:

- Air-conditioning
- Mini bar
- Tea/coffee making facilities
- Spa bath (King Spas)
- CD/DVD player
- Ironing facilities
- Internet access (wireless)
- Hair dryer
- Bathrobes (King Spas)

Room serviced daily



From **\$165** PER ROOM PER NIGHT*

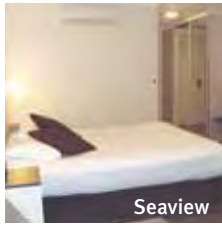
1 OCT – 20 DEC 11, 1 OCT 12 – 20 DEC 12	ADULTS	1 NT	3 NTS	5 NTS
Room with Ensuite King Spa	1 to 2	190	570	950
	1 to 2	220	660	1100
21 DEC 11 – 30 APR 12, 21 DEC 12 – 31 MAR 13	ADULTS	1 NT	3 NTS	5 NTS
Room with Ensuite King Spa	1 to 2	230	690	1150
	1 to 2	280	840	1400
1 MAY – 30 SEP 12	ADULTS	1 NT	3 NTS	5 NTS
Room with Ensuite King Spa	1 to 2	165	495	825
	1 to 2	205	615	1025

Children 0 to 2 years – cot free of charge.
3 to 14 years – adult prices apply.

Max capacity Room with Ensuite – 4, King Spa – 2.

TIDTES

Beachfront at Bicheno ★★★☆



Seaview
Beachfront at Bicheno has breathtaking views of Waubes Bay and is close to Bicheno township, beaches, diving and penguin tours.

Beach 500m
Town Centre 500m
Map page 52 Ref. 2

232 Tasman Highway, Bicheno

PROPERTY FEATURES:

- Restaurants (2)
- Room service (limited)
- Tavern
- Gaming facilities
- Pool (heated)
- Children's playground
- Barbecue
- Guest laundry

ACCOMMODATION FEATURES:

- Heating
- Tea/coffee making facilities
- Cable TV
- Electric blankets

Room serviced daily

From **\$160** PER ROOM PER NIGHT*

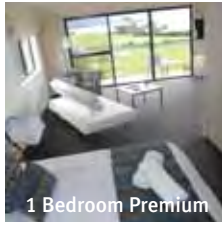
1 OCT 11 – 31 MAR 12	ADULTS	1 NT	3 NTS	5 NTS
Poolside	1 to 2	160	480	800
Poolside Family Seaview	1 to 2	160	480	800
	1 to 2	180	540	900
1 APR 12 – 31 MAR 13	ADULTS	1 NT	3 NTS	5 NTS
Poolside	1 to 2	165	495	825
Poolside Family Seaview	1 to 2	165	495	825
	1 to 2	185	555	925

Children 0 to 5 years – cot free of charge.
6 to 12 years – \$27 per child per night.

Max capacity Poolside – 3, Poolside Family – 4, Seaview – 2.

BWBTES

Diamond Island Resort, Bicheno ★★★★★



1 Bedroom Premium
Located on the coastline with access to Freycinet National Park and the wonder of the Little penguin colony at your doorstep.

Town Centre 2.5km
Map page 52 Ref. 2

69 Tasman Highway, Bicheno

PROPERTY FEATURES:

- Restaurant
- Bar
- Room service (limited)
- Pool
- Barbecue area
- Tennis court
- Parking

ACCOMMODATION FEATURES:

- Heating
- Kitchen with microwave
- In-room movies (pay to view)
- Cable TV
- Hair dryer

Apartment serviced every 3 days



From **\$250** PER ROOM PER NIGHT*

1 OCT 11 – 30 SEP 12	ADULTS	1 NT	3 NTS	5 NTS
1 Bedroom	1 to 2	250	750	1250
1 Bedroom Premium	1 to 2	300	900	1500
1 Bedroom Spa	1 to 2	325	975	1625
2 Bedroom	4	330	990	1650
1 OCT 12 – 31 MAR 13	ADULTS	1 NT	3 NTS	5 NTS
1 Bedroom	1 to 2	265	795	1325
1 Bedroom Premium	1 to 2	315	945	1575
1 Bedroom Spa	1 to 2	340	1020	1700
2 Bedroom	4	355	1065	1775

Other room types also available.

Includes	Light breakfast provisions daily.
-----------------	-----------------------------------

Children 0 to 2 years – cot free of charge.
3 to 14 years – adult prices apply.

Max capacity 1 Bedroom/1 Bedroom Premium/1 Bedroom Spa – 3,
2 Bedroom – 5.

DIATES

Craigie Knowe Cottage and Vineyard ◆◆◆◆◆



A charming three bedroom Georgian style self-contained residence set amongst vineyards, close to Wineglass Bay and Freycinet National Park.

Town Centre 10km
Map page 52 Ref. 3

80 Glen Gala Road, Cranbrook

PROPERTY FEATURES:

- Winery and cellar door nearby
- Fireplace
- iPod docking station
- DVD library
- Internet access (wireless - free)
- Parking
- Non smoking

ACCOMMODATION FEATURES:

- Heating
- Fan
- Balcony and patio
- Kitchen with microwave and dishwasher
- CD/DVD player
- Laundry
- 3 bathrooms
- Bathrobes
- Hair dryer

Cottage serviced mid stay for stays of 4 nights or more

From **\$350** PER ROOM PER NIGHT*

1 OCT 11 – 31 MAR 13 SUNDAY TO THURSDAY	ADULTS	2 NTS	3 NTS	4 NTS
Cottage	1 to 2	700	1050	1400
	3 to 4	1000	1500	2000
	5 to 6	1300	1950	2600
FRIDAY TO SATURDAY	ADULTS	2 NTS	3 NTS	4 NTS
Cottage	1 to 2	900	N/A	N/A
	3 to 4	1200	N/A	N/A
	5 to 6	1500	N/A	N/A

3 night minimum stay applies for public holidays. 4 night minimum stay applies for Easter and Christmas.

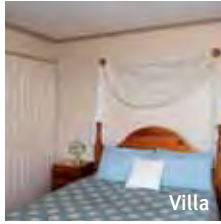
Includes	Full breakfast – provisions daily.
-----------------	------------------------------------

Children 0 to 11 years – free when sharing with an adult and using existing bedding.

Max capacity 6.

CKCTAS

Amos House & Swansea Ocean Villas ◆◆◆◆



Comfortable hotel and self-contained villa accommodation only minutes from the centre of Swansea township.

Beachfront
Town Centre 30m
Map page 52 Ref. 4

3 Maria Street, Swansea

PROPERTY FEATURES:

- Restaurant ▪ Café
- Bar ▪ Guest lounge
- Fireplace ▪ Guest laundry
- Parking ▪ Non smoking

ACCOMMODATION FEATURES:

- Ocean views
- Balcony
- Fireplace (Villas)
- Kitchen with microwave (Villas)
- Tea/coffee making facilities
- Washer/dryer (Villas)
- Ironing facilities ▪ Hair dryer

Motel serviced daily
Villa serviced every 3 days

From \$95 PER ROOM PER NIGHT*

Period	ADULTS	1 NT	3 NTS	5 NTS
1 DEC 11 – 31 JAN 12, 1 – 30 APR, 1 DEC 12 – 31 MAR 13				
Motel	1 to 2	125	375	625
Villa	1 to 2	185	555	925
1 FEB 12 – 31 MAR 12				
Motel	1 to 2	110	330	550
Villa	1 to 2	155	465	775
1 MAY – 31 AUG 12				
Motel	1 to 2	95	285	475
Villa	1 to 2	130	390	650
1 SEP – 30 NOV 12				
Motel	1 to 2	105	315	525
Villa	1 to 2	145	435	725

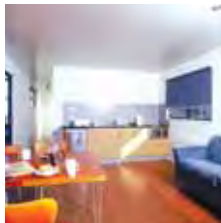
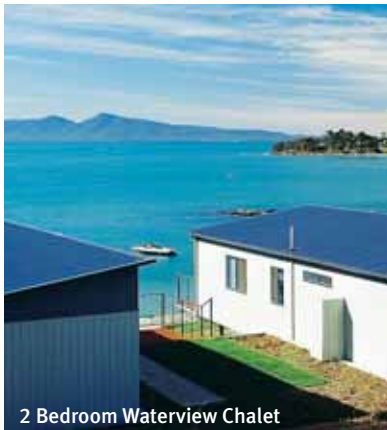
Other prices apply 1 Oct – 30 Nov 11. Room and Breakfast prices also available.

Children 0 to 2 years – cot free of charge.
3 to 14 years – adult prices apply.

Max capacity Motel – 2, Villa – 4.

AMOSWZ

Swansea Beach Chalets ◆◆◆◆



Located in the historic township of Swansea, enjoy spectacular views of Freycinet National Park over Great Oyster Bay.

Beachfront
Town Centre 500m
Map page 52 Ref. 4

Shaw Street, Swansea

PROPERTY FEATURES:

- Pool ▪ Barbecue area
- Games room
- Children's playground
- Guest laundry
- Parking ▪ Non smoking

ACCOMMODATION FEATURES:

- Deck (ocean view) ▪ Fan
- Limited cooking facilities
- Video player
- CD/DVD player
- Spa bath (some 2 Bedrooms)
- Ironing facilities
- Hair dryer

Room serviced daily

From \$160 PER ROOM PER NIGHT*

Period	ADULTS	1 NT	2 NTS	5 NTS
1 OCT 11 – 31 MAR 12, 1 OCT 12 – 31 MAR 13				
Studio	1 to 2	180	360	900
2 Bedroom Chalet	1 to 4	220	440	1100
2 Bedroom Waterview Chalet	1 to 4	240	480	1200
1 APR – 30 SEP 12				
Studio	1 to 2	160	320	800
2 Bedroom Chalet	1 to 4	200	400	1000
2 Bedroom Waterview Chalet	1 to 4	220	440	1100

2 night minimum stay applies 25 Dec 11 – 26 Jan 12, 6 – 9 Apr, 25 Dec 12 – 26 Jan 13.

Children 0 to 2 years – cot free of charge.
3 to 14 years – adult prices apply.

Max capacity Studio – 2, 2 Bedroom Chalet/
2 Bedroom Waterview Chalet – 4.

SBCSWZ

Swansea Cottages ◆◆◆◆



Swansea Cottages offers a choice of suite or cottage style accommodation adjacent to Great Oyster Bay and the beach.

Beach 50m
Town Centre 250m
Map page 52 Ref. 4

43 Franklin Street, Swansea

PROPERTY FEATURES:

- Beach access ▪ DVD library
- Barbecue area ▪ Internet access (wireless)
- Guest laundry (suites)
- Parking ▪ Tennis court

ACCOMMODATION FEATURES:

- Air-conditioning ▪ Verandah (Cottages)
- Tea/coffee making facilities
- Kitchen (Cottages)
- Limited cooking facilities (Suites)
- CD/DVD player ▪ Washer/dryer (Cottages)
- Ironing facilities
- All rooms non smoking

Suite serviced daily
Cottage serviced weekly

From \$180 PER ROOM PER NIGHT*

Period	ADULTS	1 NT	2 NTS	3 NTS
1 OCT 11 – 22 DEC 11, 11 JAN – 31 MAR 12				
Double Suite	1 to 2	200	380	540
Family Suite	1 to 2	240	440	630
2 Bedroom Cottage	1 to 2	240	440	660
1 – 5 APR, 9 – 30 APR, 1 SEP – 23 DEC 12, 21 JAN – 28 MAR 13				
Double Suite	1 to 2	240	720	1200
Family Suite	1 to 2	250	750	1250
2 Bedroom Cottage	1 to 2	260	780	1300

Other prices apply 23 Dec 11 – 10 Jan 12, 6 – 8 Apr, 1 May – 31 Aug, 24 Dec 12 – 20 Jan, 29 – 31 Mar 13. Spa Suite and 3 Bedroom Spa Cottage prices also available.

Children 0 to 2 years – cot/bed charge payable direct.
3 to 14 years – adult prices apply.

Max capacity Double Suite – 2, Family Suite – 4,
2 Bedroom Cottage – 6.

SWCTES

Piermont, Swansea ◆◆◆◆◆



Located on 93 hectares of serene beach frontage on Great Oyster Bay overlooking Freycinet National Park.

Beachfront
Town Centre 2km
Map page 52 Ref. 4

12990 Tasman Highway, Swansea

PROPERTY FEATURES:

- Restaurant ▪ Pool
- Barbecue area
- Bicycle hire ▪ Tennis court
- Guest laundry
- Internet access (wireless)

ACCOMMODATION FEATURES:

- Kitchen
- CD/DVD player
- Spa bath
- Ironing facilities ▪ Fireplace
- Washer/dryer ▪ Hair dryer
- All rooms non smoking

Cottage serviced on request

From \$205 PER ROOM PER NIGHT*

Period	ADULTS	1 NT	3 NTS	5 NTS
1 OCT – 7 DEC 11, 1 – 30 APR, 1 SEP – 7 DEC 12				
Studio Spa Cottage	1 to 2	235	705	1175
Beachfront Spa Cottage	1 to 2	265	795	1325
1 MAY – 31 AUG 12				
Studio Spa Cottage	1 to 2	205	615	1025
Beachfront Spa Cottage	1 to 2	235	705	1175
8 DEC 11 – 31 MAR 12, 8 DEC 12 – 31 MAR 13				
Studio Spa Cottage	1 to 2	265	795	1325
Beachfront Spa Cottage	1 to 2	295	885	1475

3 night minimum stay applies 5 – 9 Apr, 8 – 10 Jun, 21 Dec 12 – 12 Jan, 25 – 29 Jan, 8 – 10 Mar, 28 – 31 Mar 13. Other room types also available.

Children 0 to 2 years – cot free of charge.
3 to 14 years – adult prices apply.

Max capacity 2.

PIETES

Saffire Freycinet, Coles Bay ◆◆◆◆

From **\$1750** PER ROOM PER NIGHT



2352 Coles Bay Road, Coles Bay

Saffire is an inspirational coastal sanctuary that delivers sophisticated luxury built at the entrance to Coles Bay, overlooking the Hazards and the crystal clear waters of Great Oyster Bay.

Discreetly positioned within the serene and pristine Freycinet Peninsula, Saffire is the jewel of Tasmania, connecting mankind and Mother Nature with breathtaking style. Only two hours from Hobart, Saffire Freycinet is unique, indulgent and enriching. Designed for a select few, a maximum of just 40 guests are accommodated in 20 luxurious suites with magnificent ocean views. Included in the main building is the restaurant, outdoor courtyard, day spa with steam and massage room and meeting facilities. This new East Coast experience is a celebration of the art of service, wellbeing, masterful culinary delights, ancient landscape and wildlife in abundance.

Individual daily itineraries can lead to remote island adventures and the famed Wineglass Bay, enjoy hiking, sport fishing, wild harvest foraging, bird watching or quad biking. Indulge with an afternoon of pampering at the health and day spa followed by a glass of pinot on a private suite deck against a spectacular backdrop of the Hazards mountains and a wilderness of stars.

PROPERTY FEATURES:

- Day spa
- Restaurant
- Bar
- Room service (24 hour)
- Gymnasium
- Kayaks and mountain bikes
- Fireplace
- Guest lounge
- Selection of daily guided activities
- 20 individual suites each with private courtyard

ACCOMMODATION FEATURES:

- Deck
- Internet access (wireless - free)
- CD/DVD player
- Mini bar
- iPod docking station
- Espresso machine (Premium Suites)
- Plunge pool (Premium Suites)

Room serviced daily

Coles Bay 2km

Map page 52 Ref. 5



Deluxe Suite



Premium Suite

1 OCT 11 – 31 MAR 12 [^]	ADULTS	1 NT	3 NTS	5 NTS
Deluxe Suite	2	1750	5250	8750
Luxury Suite	2	1900	5700	9500
Premium Suite	2	2750	8250	13750

1 APR – 22 DEC 12, 4 JAN – 31 MAR 13 ⁺	ADULTS	1 NT	3 NTS	5 NTS
Deluxe Suite	2	1800	5400	9000
Luxury Suite	2	2000	6000	10000
Premium Suite	2	2800	8400	14000

23 DEC 12 – 3 JAN 12 ⁺	ADULTS	1 NT	3 NTS	5 NTS
Deluxe Suite	2	2100	6300	10500
Luxury Suite	2	2300	6900	11500
Premium Suite	2	3100	9300	15500

Children All meals and deluxe dinner beverages daily. Selected activities daily. Complimentary mini bar.
[^] One spa treatment per suite: 60 minute treatment for Deluxe Suite and Luxury Suite, 120 minute treatment for Premium Suite.
⁺ One spa voucher per suite: \$100 for Deluxe Suite and Luxury Suite, \$200 for Premium Suite.

Children 0 to 17 years – free when sharing with an adult and using existing bedding, room only. Cot free of charge.

Max Capacity Deluxe Suite/Luxury Suite – 2 adults/1 child, Premium Suite – 3 adults or 2 adults/2 children.

SAFTES

Freycinet Lodge, Freycinet National Park ★★★★★



Freycinet National Park, Coles Bay

Uniquely set within Freycinet National Park at the foot of the Hazards, Freycinet Lodge is a superb base for exploring the world famous Wineglass Bay and the Freycinet Peninsula.

The environmentally friendly one and two-roomed cabins are sensitively sited in coastal bushland on the shores of Great Oyster Bay. Freycinet Lodge is home to the signature Wineglass to Wine Glass experience.

PROPERTY FEATURES:

- Restaurants (2) ■ Bar ■ Guest lounge ■ Library ■ Gift shop
- Tennis court ■ Barbecue area ■ Safety deposit box ■ Guest laundry
- Internet facilities ■ Bicycle hire ■ Parking

ACCOMMODATION FEATURES:

- Heating ■ Fan ■ Tea/coffee making facilities ■ Hair dryer

Room serviced daily

Coles Bay 2.6km
Map page 52 Ref. 5



From **\$181** PER ROOM PER NIGHT*

Dates	Room Type	Adults	1 NT	5 NTS	7 NTS
21 – 23 DEC 11, 9 JAN – 5 APR, 11 – 30 APR 12	Freycinet Cabin	1 to 2	287	1435	2009
	Oyster Bay Cabin	1 to 2	335	1675	2345
6 – 10 APR, 5 – 6 OCT, 13 OCT, 21 DEC 12 – 12 JAN, 28 – 31 MAR 13 [^]	Freycinet Cabin	1 to 2	455	1365	2275
	Oyster Bay Cabin	1 to 2	512	1536	2560
1 MAY – 30 SEP 12	Freycinet Cabin	1 to 2	181	543	905
	Oyster Bay Cabin	1 to 2	212	636	1060
1 – 4 OCT 12, 7 – 12 OCT, 14 OCT – 20 DEC 12, 13 JAN – 27 MAR 13 [^]	Freycinet Cabin	1 to 2	368	1104	1840
	Oyster Bay Cabin	1 to 2	417	1251	2085

2 night minimum stay applies 9 Jan – 31 Mar, 6 – 10 Apr, 21 Dec 12 – 31 Mar 13. Other prices apply 1 Oct 11 – 20 Dec, 24 Dec 11 – 8 Jan 12. Other room types also available.

Includes [^] Full breakfast daily.

Children 0 to 4 years – cot free of charge.
5 to 14 years – adult prices apply.

Max capacity Freycinet Cabin – 3, Oyster Bay Cabin – 5.

FRETES

WINEGLASS TO WINE GLASS EXPERIENCE

Take an invigorating walk up to Wineglass Bay lookout and then descend onto Wineglass Bay. From Wineglass Bay you take the track along to Hazards Beach for lunch. After an afternoon of relaxing, a water taxi will collect you for a 30 minute scenic cruise back to Freycinet Lodge.

INCLUDES:

- Guided walk to Wineglass Bay and Hazards Beach
- Morning tea and lunch
- Return boat transfer to the Lodge

Departs: Daily at 8am (Sep – May)
Returns: 4pm

PRICE PER PERSON: 1 OCT 11 – 30 SEP 12 1 OCT 12 – 31 MAR 13

Adult/Child	\$385	\$400
-------------	-------	-------

The Wineglass Bay Cruise



Join the 1% club...The privileged few.

A shimmering crescent of white sand fringes the edge of a perfect turquoise sea at Wineglass Bay.

Only 1% of visitors to Freycinet National Park have the rare opportunity to see the stunning Freycinet coastline, which includes world famous Wineglass Bay. Immerse yourself in wildlife and become one of the privileged few, book your cruise today.

INCLUDES:

- 4 hour eco cruise
- Tasmanian sparkling wine or beer, oysters and cheese
- Expert guide and commentary
- Binoculars and wet weather gear

Departs: Daily from Coles Bay at 9am, 10am (Sep – May)

Returns: 1pm, 2pm



PRICE PER PERSON:

Adult	\$130
Child 4-14 years	\$85

WINEGLASS BAY CRUISES

WINTES

The Freycinet Paddle



Discover the breathtaking coastline of the Freycinet Peninsula from a different perspective on this relaxed guided sea kayaking tour. There is no experience or fitness necessary, the tours cater for all ages and level of ability. Tours depart twice daily, year-round – morning and twilight.

INCLUDES:

- 2 hours of paddling
- Safety briefing and refreshment break
- Morning or afternoon tea
- Experienced guides
- All sea kayaking equipment
- Use of spray jacket and warm jacket
- Dry bag for personal items

Departs: Daily from Coles Bay
Morning Paddle: 8:30am (Oct – Apr)
9am (May – Sep)
Twilight Paddle: varies seasonally

Duration: 3 hours



PRICE PER PERSON: 1 OCT 11 – 31 MAR 12 1 APR 12 – 31 MAR 13

Adult	\$95	\$100
Child 4-12 years	\$95	\$100

FREYGINET ADVENTURES

FSATES

Bicheno Penguin Tour



Bicheno Penguin Tours offer an exciting and educational wildlife experience for the whole family.

The protected private penguin rookery allows you to view these remarkable birds up close and undisturbed in their own environment. The experienced guides will give you a comprehensive explanation of the penguins daily life and answer all your questions. Sometimes the penguins will even stand on your feet!

INCLUDES:

- Guided penguin tour
- Expert guide and commentary
- Return transfers from selected Bicheno accommodation

Departs: Daily from Bicheno at dusk

Duration: 1 hour



PRICE PER PERSON:

Adult	\$25
Child 4-14 years	\$15

BICHENO PENGUIN TOURS

BPTTES