



Natural Bridge, near Albany

## Our Favourites

Visit the Valley of the Giants Tree Top Walk near Walpole

Enjoy the spring wildflower display in Stirling Range National Park

Admire the rock formations of The Gap and Natural Bridge near Albany

Swim and relax on the beautiful beach at Lucky Bay, Esperance

Take in the stunning scenery of Esperance on a 4WD tour

It's ruggedly beautiful with soaring cliffs and towering forests. It's intriguingly historic and has plenty of charm. Welcome to the South Coast. Navigate your way from Pemberton to Esperance for a self drive break full of spectacular scenery.

First stop Pemberton. Take in the stunning forest scenery of the Karri trees and wildflowers in spring. Fill up on gourmet food and take advantage of the excellent cellar doors. It's purely decadent travelling. Drive south and meet the coastline from Walpole to Albany for a trip full of stunning sights. Not to be missed is the Valley of The Giants Treetop Walk in Walpole-Nornalup National Park. Once you've spent some time swimming, fishing or surfing on Wilson Inlet at Denmark, look out your window to beaches, coves and bays with dramatic cliffs. Getting there is just part of the fun.

The Elephant Rocks of William Bay make for an interesting stopover. Take a dip in Greens Pool lagoon while you're there. Then head east to Albany and its dramatic granite coastline. Find galleries and restaurants lining the streets in a quaint colonial setting. From April to August, see the migration of whales, one of the most amazing sights along the coast.

Esperance, on the shores of Esperance Bay, is a very special part of the coast. From national parks to beaches, you'll never be lost for new terrain to explore. Go swimming and bushwalking in Cape Le Grand National Park, where you might just see kangaroos sunbaking on the beach. There's more scenic wonders off the coast with the 110 islands of the Recherche Archipelago giving the town its title 'Bay of Isles'. Take a cruise around the archipelago, with a stop at Woody Island for a day or two of bushwalking and snorkelling.



Lucky Bay, Esperance



## FIND YOUR ACCOMMODATION

REF.	APARTMENTS	PAGE
6	Esperance All Seasons Apartments ★★★☆	49
5	Kendenup Lodge and Cottages ★★★★★	48
3	Torbay Sea View Holiday Apartments ◆◆◆◆	47
7	Woody Island Eco Stays ◆◆	49
REF.	HOTELS	PAGE
4	Ace Motor Inn, Albany ★★★☆	47
4	All Seasons Albany ★★★★★	48
4	The Beach House at Bayside, Albany ★★★★★	48
6	Best Western Hospitality Inn, Esperance ★★★☆	49
4	Comfort Inn Albany ★★★☆	48
6	Comfort Inn Bay of Isles, Esperance ★★★★★	49
2	Denmark Waterfront ★★★	47
1	Forest Lodge Resort, Pemberton ★★★☆	46
1	Karri Valley Resort, Pemberton ★★★☆	46
4	Metro Inn Albany ★★★	47
1	Stonebarn ◆◆◆◆◆	46

# Pemberton

## Forest Lodge Resort ★★★☆



Enjoy the peacefulness of a lodge surrounded by beautiful gardens and the Karri forest, a natural sanctuary for bird life.

Town Centre 2km  
Map page 45 Ref. 1

13626 Vasse Highway, Pemberton

### PROPERTY FEATURES:

- Breakfast restaurant
- Children's playground
- Barbecue area
- Guest laundry

### ACCOMMODATION FEATURES:

- Air-conditioning (Guest Rooms)
- Limited cooking facilities (Chalets)
- Microwave
- Tea/coffee making facilities
- Internet access
- In-room movies (free)
- Log fires (Chalets)

Room serviced daily

From **\$135** PER ROOM PER NIGHT\*

1 - 20 APR, 27 APR - 31 AUG 11, 1 FEB - 31 MAR 12	ADULTS	1 NT	3 NTS	5 NTS
Deluxe Guest Room^	1 to 2	170	510	850
2 Bedroom Chalet	1 to 2	180	540	900
21 - 26 APR, 1 SEP 11 - 31 JAN 12	ADULTS	1 NT	3 NTS	5 NTS
Deluxe Guest Room^	1 to 2	175	525	875
2 Bedroom Chalet	1 to 2	190	570	950

Superior Guest Room, Superior Studio Motel and Homestead House prices also available.

**Includes** ^ Light breakfast daily.

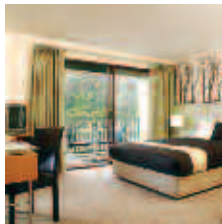
**Children** 0 to 2 years - cot/bed charge payable direct.  
3 to 15 years - adult prices apply.  
Deluxe Guest Room - not catered for.

**Max capacity** Deluxe Guest Room - 2, 2 Bedroom Chalet - 6.  
**FORWAU**

### TRAVELPOINT BONUS

FREE Night Offer: Stay 4 nights in a 2 Bedroom Chalet, pay for 3, valid 1 May - 2 Jun, 6 Jun - 8 Jul, 25 Jul - 31 Aug 11.

## Karri Valley Resort ★★★☆



Nestled on the edge of Lake Beedalup, surrounded by forest, Karri Valley Resort offers a range of accommodation styles in a picture perfect setting.

Town Centre 21km  
Map page 45 Ref. 1

Vasse Highway, Pemberton

### PROPERTY FEATURES:

- Restaurant
- Tennis court
- Mini golf
- Animal farm
- Children's playground
- Barbecue area
- Guest laundry
- General store

### ACCOMMODATION FEATURES:

- Balcony
- Fan
- Tea/coffee making facilities
- Ironing facilities
- Hair dryer

Room serviced daily  
Chalet serviced every 4 days

From **\$212** PER ROOM PER NIGHT\*

1 APR 11 - 31 MAR 12	ADULTS	1 NT	3 NTS	5 NTS
Lakeside Room	1 to 2	212	636	1060
2 Bedroom Chalet	1 to 4	262	786	1310
3 Bedroom Chalet	1 to 6	297	891	1485

**Children** 0 to 12 years - free when sharing with an adult and using existing bedding.

**Max capacity** Lakeside Room - 2 adults/1 child, 2 Bedroom Chalet - 4, 3 Bedroom Chalet - 6.

**KVRWAU**

## Stonebarn ◆◆◆◆◆



Corner Telephone Road and South Western Highway, Pemberton

Located in the heart of Western Australia's epicurean region, meticulously handcrafted with local stone and timber, featuring six spacious, well appointed guest suites, Stonebarn is the quintessential boutique retreat.

The property is set amongst 160 acres of lush forest, rivers and dams in the picturesque Pemberton region. A magnificent stone lodge with striking architectural features highlighted by elegant interiors and furnishings, Stonebarn is an iconic boutique hotel.

Indulge in culinary creations by your personal chef highlighting the very best of fresh, abundant, fragrant local produce and enjoy superb local wines from the dramatic bank vault cellar.

### PROPERTY FEATURES:

- Fireplace
- Cellar door
- The Bush Bath
- Restaurant (breakfast and lunch)
- Guest lounge
- Library
- Internet access (wireless - free)
- Parking (undercover)
- Non smoking

### ACCOMMODATION FEATURES:

- Air-conditioning
- Fan
- Balcony
- Limited cooking facilities with microwave
- Tea/coffee making facilities
- iPod docking station
- Internet access (wireless - free)
- Bathrobes
- Hair dryer
- Safe

Room serviced daily

Town centre 20km  
Map page 45 Ref. 1



From **\$345** PER ROOM PER NIGHT\*



1 - 20 APR, 27 APR - 22 DEC 11, 4 JAN - 31 MAR 12	ADULTS	1 NT	3 NTS	5 NTS
MONDAY TO THURSDAY				
King Suite	1 to 2	345	1035	1725
Twin Suite	1 to 2	345	1035	1725
FRIDAY TO SUNDAY				
King Suite	1 to 2	375	1125	N/A
Twin Suite	1 to 2	375	1125	N/A
21 - 26 APR 11	ADULTS	2 NTS	3 NTS	5 NTS
King Suite	1 to 2	790	1185	1975
Twin Suite	1 to 2	790	1185	1975
23 DEC 11 - 3 JAN 12	ADULTS	2 NTS	3 NTS	5 NTS
King Suite	1 to 2	850	1275	2125
Twin Suite	1 to 2	850	1275	2125

**Includes** Full breakfast daily.

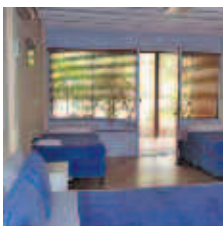
**Children** 0 to 12 years - not catered for.

**Max capacity** 2.  
**STOWAU**

### TRAVELPOINT EXCLUSIVE

FREE gourmet picnic hamper on one day for stays of 4 nights or more, valid 1 - 20 Apr, 27 Apr - 22 Dec 11.

## Denmark Waterfront ★★★



A tranquil hideaway on the edge of the inlet and between the town and the beach. Enjoy walks, secluded beaches, superb wineries and galleries.

Town Centre 3km  
Map page 45 Ref. 2

63 Inlet Drive, Denmark

## PROPERTY FEATURES:

- Restaurant (selected opening times)
- Room service (limited)
- Barbecue area
- DVD library ▪ Guest laundry
- Parking ▪ Non smoking

## ACCOMMODATION FEATURES:

- Air-conditioning (Studios) ▪ Fan
- Tea/coffee making facilities
- Limited cooking facilities (Studios)
- CD/DVD player
- Spa bath (Spa Studios)
- Hair dryer

Mini service daily (linen change for stays of 5 nights or more)

From \$76 PER ROOM PER NIGHT\*

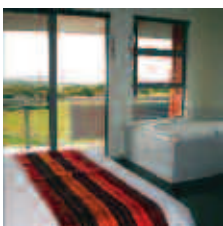
1 - 30 APR, 20 DEC 11 - 31 MAR 12	ADULTS	1 NT	3 NTS	4 NTS
Motel	1 to 2	160	399	484
Spa Studio	1 to 2	216	537	648
Studio	1 to 2	196	489	584
1 MAY - 31 AUG 11	ADULTS	1 NT	3 NTS	4 NTS
Motel	1 to 2	100	249	304
Spa Studio	1 to 2	170	426	512
Studio	1 to 2	140	354	424
1 SEP - 19 DEC 11	ADULTS	1 NT	3 NTS	4 NTS
Motel	1 to 2	140	354	424
Spa Studio	1 to 2	196	489	584
Studio	1 to 2	166	414	500

Children 0 to 11 years - free when sharing with an adult and using existing bedding.

Max capacity 4.

DWFWAU

## Torbay Sea View Holiday Apartments ◆◆◆◆



Superbly appointed spacious two and three bedroom spa apartments with stunning ocean views near Albany. A truly remarkable place to stay.

Albany 28km  
Map page 45 Ref. 3

252 Cosy Corner Road, Torbay

## PROPERTY FEATURES:

- Tennis court ▪ DVD library ▪ Games room
- Spa ▪ Exercise equipment
- Parking (undercover)

## ACCOMMODATION FEATURES:

- Ocean views ▪ Air-conditioning
- Balcony and patio ▪ Barbecue
- Kitchen with microwave and dishwasher
- CD/DVD player ▪ 2 bathrooms
- Internet access (broadband)
- Spa bath ▪ Bathrobes ▪ Washer/dryer
- Ironing facilities ▪ Hair dryer
- All rooms non smoking

Apartment serviced every 3 days

From \$260 PER ROOM PER NIGHT\*

1 - 20 APR, 27 APR - 16 DEC 11, 4 JAN - 31 MAR 12	ADULTS	2 NTS	3 NTS	5 NTS
2 Bedroom Spa	1 to 2	520	780	1300
3 Bedroom Spa	1 to 2	580	870	1450
3 Bedroom Premium Spa	1 to 2	640	960	1600
21 - 26 APR, 17 DEC 11 - 3 JAN 12	ADULTS	2 NTS	3 NTS	5 NTS
2 Bedroom Spa	1 to 2	600	900	1500
3 Bedroom Spa	1 to 2	660	990	1650
3 Bedroom Premium Spa	1 to 2	720	1080	1800

3 night minimum stay applies 21 - 26 Apr, 24 Dec 11 - 3 Jan 12.

Children 0 to 5 years - cot/bed charge payable direct.  
6 to 15 years - adult prices apply.

Max capacity 2 Bedroom Spa - 4, 3 Bedrooms - 6.

TORALH

## Metro Inn Albany ★★★



Situated in a quiet location, the perfect place for guests wishing to experience the beauty of the picturesque town of Albany.

Town Centre 1km  
Map page 45 Ref. 4

270 Albany Highway, Albany

## PROPERTY FEATURES:

- Restaurant ▪ Room service (limited)
- Bar ▪ Pool (heated indoor)
- Spa (heated indoor)
- Barbecue area ▪ Tennis court
- Children's playground
- Guest laundry ▪ Parking

## ACCOMMODATION FEATURES:

- Air-conditioning
- Tea/coffee making facilities
- In-room movies (free) ▪ Cable TV
- Hair dryer ▪ All rooms non smoking

Room serviced daily



From \$119 PER ROOM PER NIGHT\*

1 APR - 23 DEC, 29 DEC 11 - 31 MAR 12	ADULTS	1 NT	3 NTS	5 NTS
Standard	1 to 2	119	357	595
Family Room	1 to 2	147	441	735
24 - 28 DEC 11	ADULTS	2 NTS	3 NTS	5 NTS
Standard	1 to 2	294	441	735
Family Room	1 to 2	520	780	1300

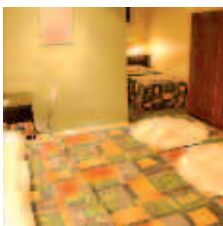
Room and Breakfast prices also available.

Children 0 to 11 years - free when sharing with an adult and using existing bedding.

Max capacity Standard - 3, Family Room - 3 adults or 2 adults/2 children.

METALH

## Ace Motor Inn, Albany ★★★☆



Only a short distance from the centre of Albany, this property offers quality accommodation combined with friendly and warm hospitality.

Town Centre 1km  
Map page 45 Ref. 4

314 Albany Highway, Albany

## PROPERTY FEATURES:

- Restaurant ▪ Bar
- Room service (limited)
- Barbecue area ▪ Guest laundry
- Internet access (broadband)
- Parking

## ACCOMMODATION FEATURES:

- Air-conditioning
- Tea/coffee making facilities
- Cable TV
- In-room movies (free)
- Internet access (wireless)
- Ironing facilities ▪ Hair dryer

Room serviced daily

From \$108 PER ROOM PER NIGHT\*

1 - 21 APR, 25 APR - 10 MAY, 4 - 5 JUN, 5 - 23 SEP, 26 SEP - 27 NOV 11, 3 JAN - 2 MAR, 5 - 31 MAR 12	ADULTS	1 NT	3 NTS	5 NTS
Hotel	1 to 2	132	396	660
22 - 24 APR, 24 - 25 SEP, 22 DEC 11 - 2 JAN, 3 - 4 MAR 12	ADULTS	1 NT	3 NTS	5 NTS
Hotel	1 to 2	144	432	720
11 MAY - 3 JUN, 6 JUN - 4 SEP, 28 NOV - 21 DEC 11	ADULTS	1 NT	3 NTS	5 NTS
Hotel	1 to 2	108	324	540

Room and Breakfast prices also available.

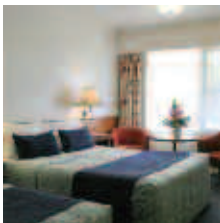
Children 0 to 2 years - cot/bed charge payable direct.  
3 to 14 years - adult prices apply.

Max capacity 3.

AMIALH

# Albany and Kendenup

## Comfort Inn Albany ★★★☆



Located minutes from the CBD and only a short drive to the many spectacular attractions in and around Albany.

Town Centre 1.5km  
Map page 45 Ref. 4

191 Albany Highway, Albany

### PROPERTY FEATURES:

- Restaurant ▪ Bar
- Room service (limited)
- Internet access (wireless)
- Guest laundry
- Laundry/dry cleaning service
- Parking ▪ Non smoking

### ACCOMMODATION FEATURES:

- Air-conditioning
- Tea/coffee making facilities
- Mini bar ▪ Cable TV
- Ironing facilities ▪ Hair dryer

Room serviced daily



From **\$139** PER ROOM PER NIGHT\*

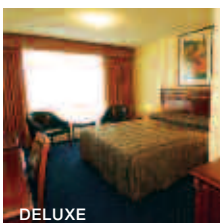
1 APR 11 – 31 MAR 12	ADULTS	1 NT	3 NTS	5 NTS
Executive	1 to 2	139	417	695

**Children** 0 to 11 years – free when sharing with an adult and using existing bedding.

**Max capacity** 3.

**COMALH**

## All Seasons Albany ★★★★★



Conveniently located within close proximity of all the South Coast's major tourist attractions.

Town Centre 1.3km  
Map page 45 Ref. 4

369 Albany Highway, Albany

### PROPERTY FEATURES:

- Restaurant ▪ Café
- Bar ▪ Room service (limited)
- Guest lounge ▪ Barbecue area
- Internet facilities
- Guest laundry
- Laundry/dry cleaning service
- Parking ▪ Non smoking

### ACCOMMODATION FEATURES:

- Air-conditioning ▪ Balcony
- Tea/coffee making facilities
- Cable TV
- Internet access (wireless)
- Ironing facilities ▪ Hair dryer

Room serviced daily

From **\$91** PER ROOM PER NIGHT\*

1 – 21 APR, 27 APR – 2 JUN, 7 JUN – 31 AUG 11	ADULTS	1 NT	3 NTS	5 NTS
Standard	1 to 2	91	273	455
Superior	1 to 2	100	300	500
Deluxe	1 to 2	111	333	555

1 – 29 SEP, 4 OCT – 24 DEC 11, 3 JAN – 31 MAR 12	ADULTS	1 NT	3 NTS	5 NTS
Standard	1 to 2	100	300	500
Superior	1 to 2	111	333	555
Deluxe	1 to 2	120	360	600

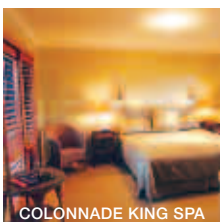
Other prices apply 22 – 26 Apr, 3 – 6 Jun, 30 Sep – 3 Oct, 25 Dec 11 – 2 Jan 12.

**Children** 0 to 15 years – free when sharing with an adult and using existing bedding.

**Max capacity** Standard/Superior – 2, Deluxe – 3.

**ASAALH**

## The Beach House at Bayside, Albany ★★★★★



A touch of European elegance by beautiful Middleton Bay. Offering gracious service, privacy and comfort.

Town Centre 5km  
Map page 45 Ref. 4

33 Barry Court, Albany

### PROPERTY FEATURES:

- Room service (limited)
- Guest library
- DVD library ▪ Parking
- Laundry/dry cleaning service

### ACCOMMODATION FEATURES:

- Air-conditioning
- Internet access (broadband)
- Mini bar ▪ CD/DVD player
- Tea/coffee making facilities
- Bathrobes ▪ Safe
- Hair dryer ▪ Ironing facilities

Room serviced daily



From **\$243** PER ROOM PER NIGHT\*

1 APR 11 – 31 MAR 12	ADULTS	1 NT	3 NTS	5 NTS
Main House Queen	2	243	729	1215
Main House King	2	253	759	1265
Colonnade King Spa	2	295	885	1475
Garden Suite	2	328	984	1640

**Includes** Full breakfast, afternoon tea, evening port and chocolates daily.

**Children** 0 to 1 years – cot/bed charge payable direct. 2 to 10 years – free when sharing with an adult and using existing bedding.

**Max capacity** Main House Queen/Main House King/Colonnade King Spa – 2, Garden Suite – 3.

**BEAALH**

### TRAVELPOINT EXCLUSIVE

FREE fruit and cheese platter for stays of 3 nights or more in a Colonnade King Spa room or Garden Suite, valid 1 Jun – 31 Aug 11.

## Kendenup Lodge and Cottages ★★★★★



Located 30 minutes north of Albany overlooking the Stirling Range and within close proximity to Mount Barker wine country.

Town Centre 10km  
Map page 45 Ref. 5

217 Moorilup Road, Kendenup

### PROPERTY FEATURES:

- 24 hour reception
- Café ▪ Bar
- Spa ▪ Steam room
- Barbecue area ▪ Bicycle hire
- Gymnasium ▪ Internet facilities
- Parking ▪ Non smoking

### ACCOMMODATION FEATURES:

- Air-conditioning ▪ Balcony
- Barbecue
- Tea/coffee making facilities
- Kitchen ▪ Microwave
- CD/DVD player
- Internet access (broadband)

Room serviced weekly

From **\$160** PER ROOM PER NIGHT\*

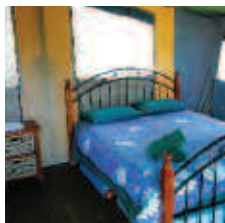
1 APR 11 – 31 MAR 12	ADULTS	1 NT	3 NTS	5 NTS
Lodge Room	1 to 3	160	480	800
Family Cottage	1 to 2	200	600	1000
Indulgence Cottage	1 to 2	350	1050	1750

**Children** 0 to 2 years – cot/bed charge payable direct. 2 to 14 years – adult prices apply.

**Max capacity** Lodge Room – 3, Family Cottage – 7, Indulgence Cottage – 4.

**KENWAW**

## Woody Island Eco Stays ♦♦



Located on picturesque Woody Island; nestled amongst the trees with glimpses of Shearwater Bay.

Shop on-site  
Esperance 15km  
Map page 45 Ref. 7

### Woody Island, via Esperance

#### PROPERTY FEATURES:

- Café
- Barbecue area
- Children's playground
- Kayak hire
- Non smoking

#### ACCOMMODATION FEATURES:

- Private deck
- Outdoor table and chairs
- Shared facilities
- Lighting
- Linen and doonas
- Side table

Room serviced every 4 days

From **\$139** PER ROOM PER NIGHT\*

1 APR – 8 MAY 11	ADULTS	1 NT	3 NTS	5 NTS
Safari Hut	1 to 2	139	417	695
24 SEP 11 – 31 MAR 12	ADULTS	1 NT	3 NTS	5 NTS
Safari Hut	1 to 2	152	456	760

Woody Island Eco Stays is closed 9 May – 23 Sep 11.

**Children** 0 to 2 years – cot/bed charge payable direct.  
3 to 16 years – \$18 per child per night.

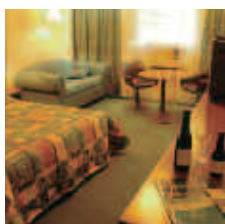
**Max capacity** 5.

WIEEPR

**Access:** By launch transfer from Esperance with MacKenzie's Island Cruises.

Transfers must be booked in conjunction with accommodation.

## Best Western Hospitality Inn, Esperance ★★★☆



With spacious well appointed rooms, Best Western Hospitality Inn Esperance is situated in the town centre with views of Esperance Bay.

Town Centre 100m  
Map page 45 Ref. 6

### The Esplanade, Esperance

#### PROPERTY FEATURES:

- Restaurant ▪ Bar
- Room service (limited)
- Pool ▪ Guest laundry
- Barbecue area (poolside)
- Internet facilities (free)
- Parking ▪ Non smoking

#### ACCOMMODATION FEATURES:

- Air-conditioning
- Tea/coffee making facilities
- Mini bar ▪ Barbecue
- Cable TV ▪ In-room movies (free)
- Internet access (wireless – free)
- Ironing facilities ▪ Hair dryer

Room serviced daily

From **\$139** PER ROOM PER NIGHT\*

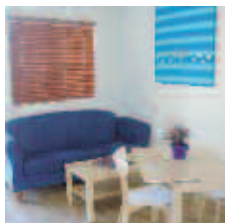
1 APR 11 – 31 MAR 12	ADULTS	1 NT	3 NTS	5 NTS
Motel	1 to 2	139	417	695

**Children** 0 to 14 years – free when sharing with an adult and using existing bedding.

**Max capacity** 3 adults or 2 adults/2 children.

HOSEPR

## Esperance All Seasons Apartments ★★★☆



Located near the town centre, opposite the beach and beautiful bay. Only a short stroll to restaurants and parks.

Town Centre 1km  
Map page 45 Ref. 6

### 73 The Esplanade, Esperance

#### PROPERTY FEATURES:

- 24 hour reception
- Barbecue area
- DVD library
- Guest laundry
- Internet access (wireless)
- Parking

#### ACCOMMODATION FEATURES:

- Air-conditioning ▪ Patio
- Limited cooking facilities with microwave
- Barbecue ▪ CD/DVD player
- Ironing facilities
- Washer/dryer ▪ Hair dryer

Apartment serviced weekly

From **\$115** PER ROOM PER NIGHT\*

1 APR, 19 – 22 APR, 27 APR – 31 MAY, 4 – 7 JUN, 3 – 17 JUL, 1 – 23 SEP, 28 SEP – 15 DEC 11, 1 FEB – 31 MAR 12	ADULTS	1 NT	3 NTS	5 NTS
1 Bedroom	1 to 2	130	390	650
2 Bedroom	1 to 2	140	420	700
2 – 18 APR, 23 – 26 APR, 24 – 27 SEP, 16 DEC 11 – 31 JAN 12	ADULTS	2 NTS	3 NTS	5 NTS
1 Bedroom	1 to 2	320	480	800
2 Bedroom	1 to 2	370	555	925
1 – 3 JUN, 8 JUN – 2 JUL, 18 JUL – 31 AUG 11	ADULTS	1 NT	3 NTS	5 NTS
1 Bedroom	1 to 2	115	345	575
2 Bedroom	1 to 2	120	360	600

5 night minimum stay applies 16 Dec 11 – 31 Jan 12.

**Children** 0 to 2 years – cot/bed charge payable direct.  
3 to 14 years – adult prices apply.

**Max capacity** 1 Bedroom – 2, 2 Bedroom – 5.

EASEPR

## Comfort Inn Bay of Isles, Esperance ★★★★★



Situated on The Esplanade, offering breathtaking views of the Esperance Bay and only a two minute walk to the centre of town.

Town Centre 250m  
Map page 45 Ref. 6

### 32 The Esplanade, Esperance

#### PROPERTY FEATURES:

- Restaurant ▪ Bar
- Room service (limited)
- Pool (heated) ▪ Spa (heated)
- Children's playground
- Guest laundry

#### ACCOMMODATION FEATURES:

- Air-conditioning
- Tea/coffee making facilities
- Cable TV
- In-room movies (free)
- Internet access (wireless)
- Hair dryer

Room serviced daily

From **\$125** PER ROOM PER NIGHT\*

1 APR – 21 DEC 11, 1 FEB – 31 MAR 12	ADULTS	1 NT	3 NTS	5 NTS
Standard	1 to 2	125	375	625
Executive/Executive Twin	1 to 2	138	414	690
Family	1 to 2	145	435	725
Spa	1 to 2	155	465	775
22 DEC 11 – 31 JAN 12	ADULTS	2 NTS	3 NTS	5 NTS
Standard	1 to 2	276	414	690
Executive/Executive Twin	1 to 2	276	414	690
Family	1 to 2	290	435	725
Spa	1 to 2	310	465	775

**Children** 0 to 11 years – free when sharing with an adult and using existing bedding.

**Max capacity** Standard/Executive Twin – 4, Executive/Spa – 3, Family – 5.

BOIEPR

# Tours from Esperance

## Half Day Bay of Isles Cruise



Explore the magnificent Recherche Archipelago on this scenic wildlife cruise. View New Zealand fur seals, Australian sea lions, Cape Barren geese, White-Breasted sea eagles and dolphins in their natural environment whilst enjoying the skipper's commentary.

The highlight of the morning is a stop over on beautiful Woody Island where morning tea and a guided bush walk are included. Glass bottom boat tours are also available on the island (extra charge).

**INCLUDES:**

- Wildlife cruise through the Bay of Isles
- 1 hour 45 minutes visit on Woody Island
- Guided bushwalk
- Morning tea

**Departs:** Daily from Taylor Street Jetty, Esperance at 9am  
(1 Apr – 8 May, 24 Sep 11 – 31 Mar 12)

**Returns:** 1pm

**PRICE:**

Adult	\$92
Concession	\$86
Child 1-2 years	\$10
Child 3-16 years	\$30
Family 2 adults and 2 children	\$214

MACKENZIE'S ISLAND CRUISES

MACEPR

## Great Ocean Drive



The Great Ocean Drive is a great two hour introductory tour to Esperance.

Discover the Tourist Loop Road from West Beach to the magnificent Twilight Cove and from Pink Lake through to Bandy Creek then back through Esperance to see the historical buildings of the past.

This is a brief tour giving you a quick orientation and insight into the rich history of Esperance.

**INCLUDES:**

- 2 hour introductory tour of Esperance
- Expert commentary from experienced guide
- Air-conditioned vehicle
- Return transfers from Esperance accommodation

**Departs:** Daily from Esperance on demand

**Duration:** 2 hours

**PRICE:**

Adult	\$55
Concession	\$50
Child 4-14 years	\$40
Family 2 adults and 2 children	\$175

ESPERANCE ECO-DISCOVERY TOURS

EEDEPR

## Cape Le Grand Adventure



Drive along 50 kilometres of stunning Le Grand Beach en route to Lucky Bay, stop for morning or afternoon tea on the beach and learn about the wildlife, wildflowers and local history. This day tour can be as leisurely or action packed as you wish.

Choose the full day tour option and explore Wharton Beach with time to swim, relax or walk on this magnificent beach.

**INCLUDES:**

- Le Grand Beach
- Sandboarding and swimming at Lucky Bay
- 46 metre in-vehicle rock climb
- Morning or afternoon tea
- Lunch (Full Day tour)
- National park fees
- Air-conditioned 4WD vehicle
- Return transfers from Esperance accommodation

**Departs:** Daily from Esperance at 9am

**Returns:** Half Day: 1pm  
Full Day: 5pm

**PRICE:**

	HALF DAY	FULL DAY
Adult	\$95	\$165
Concession	\$85	\$150
Child 4-14 years	\$75	\$140
Family 2 adults and 2 children	\$300	\$550

ESPERANCE ECO-DISCOVERY TOURS

EEDEPR

## Half Day Mandoowernup Tour



See how the Noongar people have maintained their culture within the pristine environs around Esperance. You will be amazed at the simplicity of the hunting and gathering techniques used and be captivated at how nature teaches and guides you.

With over 50 kilometres of beach driving you can sit back and enjoy the crystal clear waters, spectacular pristine beaches, rocky granite headlands and see an abundant display of wildlife.

**INCLUDES:**

- Mandoowernup (Cape Le Grand) tour
- Boomerang throwing lessons
- Guided commentary and dreamtime stories
- Morning tea with billy tea, damper and bush jam
- Return transfers from Esperance accommodation

**Departs:** Daily from Esperance at 9am

**Returns:** 1pm

**PRICE:**

Adult	\$115
Concession	\$105
Child 6-14 years	\$80
Family 2 adults and 2 children	\$340

KEPA KURL ECO-DISCOVERY TOURS

KEPEPR