



Blue Mountains

## Our Favourites

Experience Katoomba's Scenic Skywalk, a glass bottom carriage that glides 270m above the valley

See the spectacular Three Sisters at Echo Point in Katoomba

Follow one of the many walking tracks into the Blue Mountains National Park

Take a guided tour of the limestone Jenolan Caves

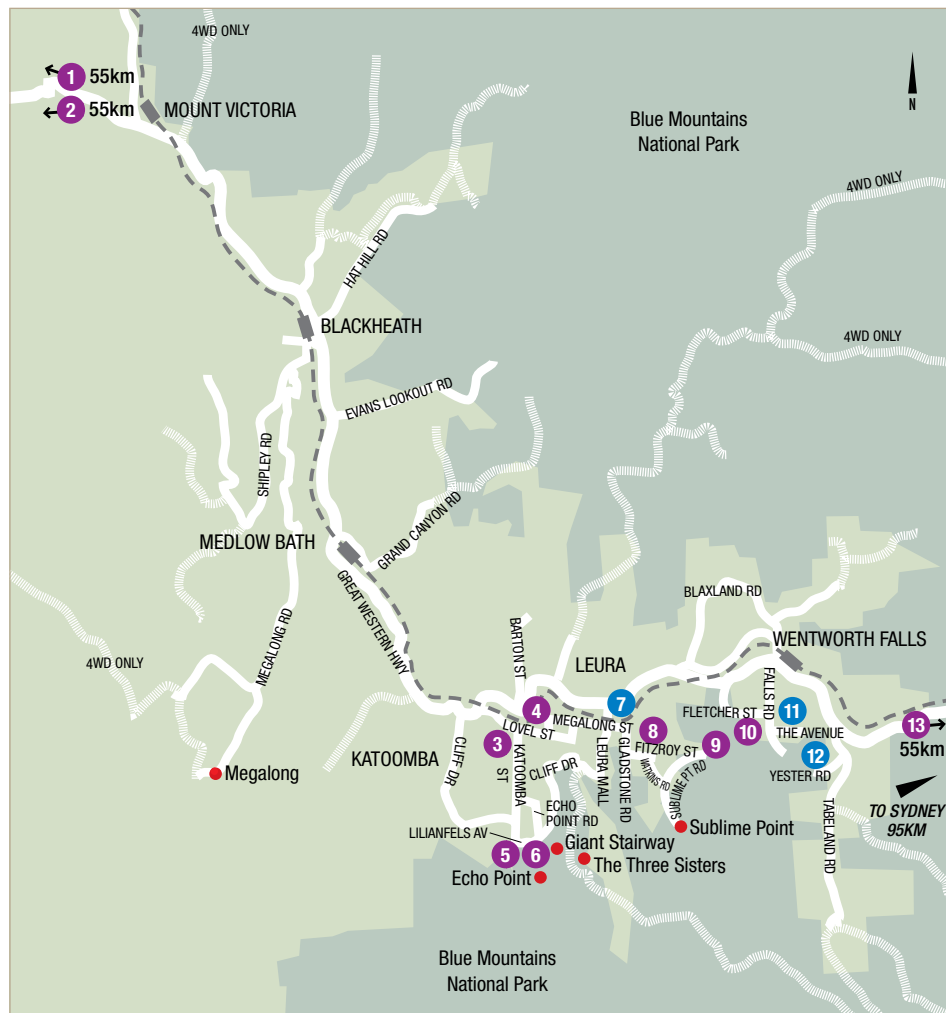
Browse the antique stores and galleries in Leura and Katoomba

Amazing views are just the beginning of the Blue Mountains' allure. Less than two hours out of Sydney, a whole world of spectacular landscape, village life, adventure sports and pampering spas awaits. Simple pleasures can be enjoyed between villages that offer country hospitality and wonderful local produce.

Be captivated by the scenery starting at Echo Point in Katoomba. The Three Sisters stand tall surrounded by the Megalong Valley, discover the Giant Stairway and take in the breathtaking views across to the Ruined Castle. Bushwalking is a favourite pastime here and is the best way to see the whole area. The historic town of Wentworth Falls is fantastically picturesque, go exploring by foot and be rewarded with sensational views over the Jamison Valley, home to the breathtaking waterfall for which the area is named.

Ready for adventure? Get the adrenalin pumping as you abseil down cliff faces or ride the Scenic World railway 415 metres down into the ancient rainforest. Spend some time walking through the forest before climbing aboard the steepest aerial cable car in the southern hemisphere for the 545 metre ascent out of the Jamison Valley rainforest – a truly amazing experience.

Just out of town near Lithgow, be fascinated by the limestone Jenolan Caves, intriguing travellers for more than a century.

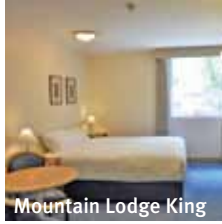


## FIND YOUR ACCOMMODATION

REF.	APARTMENTS	PAGE
11	Falls Mountain Retreat ★★★★★☆	45
7	Leisure Inn Spires ◆◆◆◇	44
12	Yester Grange Cottages ◆◆◆◆	45
REF.	HOTELS	PAGE
3	The Carrington Hotel ◆◆◆◆	44
5	Echoes' Boutique Hotel & Restaurant ★★★★★☆	45
9	Fairmont Resort Blue Mountains ◆◆◆◆◇	46
2	Jenolan Caves House ★★★☆	44
6	Lilianfels Blue Mountains Resort & Spa ★★★★★	47
10	Moments Accommodation ◆◆◆◆◇	45
4	The Mountain Heritage Hotel and Spa Retreat ★★★★★☆	48
13	Sebel Resort & Spa Hawkesbury Valley ★★★★★☆	48
8	Waldorf Leura Gardens Resort ◆◆◆◆	44
1	Wolgan Valley Resort & Spa ◆◆◆◆◆	47

# Blue Mountains

## Jenolan Caves House ★★★☆



Mountain Lodge King

Set in the Blue Mountains World Heritage area and located right at the Jenolan Caves. Experience warm country hospitality, grand dining and relaxation.

Jenolan Caves 20m  
Map page 43 Ref. 2

Jenolan Caves Road, Jenolan Caves

### PROPERTY FEATURES:

- 24 hour reception
- Restaurant ▪ Theatre
- Café (licensed) ▪ Bar
- Gift shop ▪ Games room
- Library ▪ Guest lounge
- Guest laundry
- Lift ▪ Parking ▪ Non smoking

### ACCOMMODATION FEATURES:

- Tea/coffee making facilities
- Ironing facilities ▪ Hair dryer

### Room serviced daily

Mountain Lodge King Rooms ★★★



From **\$150** PER ROOM PER NIGHT\*

1 – 5 APR, 21 – 24 APR, 26 APR – 10 JUN, ADULTS	1 NT	2 NTS	3 NTS
12 JUN – 1 JUL, 14 JUL – 23 SEP, 6 OCT – 23 DEC 12, 29 JAN – 28 MAR 13			
SUNDAY TO THURSDAY			
Mountain Lodge King	1 to 2	150	300 450
Caves House Classic	1 to 2	165	330 495
Caves House Grand Classic	1 to 2	195	390 585
FRIDAY TO SATURDAY			
Mountain Lodge King	1 to 2	170	340 N/A
Caves House Classic	1 to 2	195	390 N/A
Caves House Grand Classic	1 to 2	235	470 N/A

Other prices apply 6 – 20 Apr, 25 Apr, 11 Jun, 2 – 13 Jul, 24 Sep – 5 Oct, 24 Dec 12 – 28 Jan, 29 – 31 Mar 13.

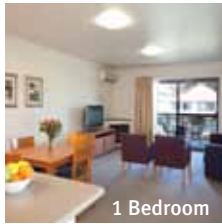
**Includes** Light breakfast daily.

**Children** 0 to 17 years – free when sharing with an adult and using existing bedding, room only. Cot free of charge.

**Max capacity** 2.

JCHNSW

## Leisure Inn Spires ◆◆◆◆



1 Bedroom

Perfectly located close to golf courses, the Three Sisters and the Scenic Railway. Just a short stroll to shops, galleries, cafés and restaurants.

Town Centre 100m  
Map page 43 Ref. 7

100 Leura Mall, Leura

### PROPERTY FEATURES:

- Landscaped central courtyard
- Parking (undercover security)

### ACCOMMODATION FEATURES:

- Air-conditioning
- Balcony or patio
- Tea/coffee making facilities
- Internet access
- Kitchen (1 and 2 Bedrooms)
- Spa bath (1 and 2 Bedrooms)
- Laundry (1 and 2 Bedrooms)

### Mini service daily

From **\$191** PER ROOM PER NIGHT\*

1 – 5 APR, 10 APR 12 – 28 MAR 13	ADULTS	1 NT	3 NTS	5 NTS
Studio	1 to 2	191	573	955
1 Bedroom	1 to 2	247	741	1235
2 Bedroom	1 to 4	353	1059	1765
6 – 9 APR 12, 29 – 31 MAR 13				
Studio	1 to 2	N/A	939	1252
1 Bedroom	1 to 2	N/A	1107	1476
2 Bedroom	1 to 4	N/A	1230	1670

2 night minimum stay applies 8 – 11 Jun, 28 Sep – 1 Oct 12.

3 night minimum stay applies 24 Dec 12 – 1 Jan 13.

**Children** 0 to 12 years – free when sharing with an adult and using existing bedding.

**Max capacity** Studio – 2, 1 Bedroom – 3, 2 Bedroom – 5.

SPIBLU

### SUNLOVER BONUS

FREE midday late check out (subject to availability).

## The Carrington Hotel ◆◆◆◆



This Heritage Listed hotel is the perfect base to explore the surrounding World Heritage Listed Blue Mountains National Park.

Town Centre 50m  
Map page 43 Ref. 3

15-47 Katoomba Street, Katoomba

### PROPERTY FEATURES:

- Day spa
- 24 hour reception
- Restaurants (2)
- Bars (3) ▪ Nightclub
- Library ▪ Internet access (wireless)
- Parking

### ACCOMMODATION FEATURES:

- Tea/coffee making facilities
- Internet access (broadband)
- Ironing facilities
- Hair dryer

### Room serviced daily



From **\$204** PER ROOM PER NIGHT\*

1 APR 12 – 31 MAR 13	ADULTS	1 NT	2 NTS	5 NTS
Colonial Room	1	204	408	1020
	2	221	442	1105
Premier View Spa Room	1	239	478	1195
	2	293	586	1465
Junior Suite	1	275	550	1375
	2	364	728	1820

2 night minimum stay applies 6 – 9 Apr, 8 – 11 Jun 12, 29 – 31 Mar 13 and when stay includes a Saturday night.

**Includes** Light breakfast daily.

**Children** 0 to 5 years – cot/bed charge payable direct. 6 to 12 years – \$43 per child per night.

**Max capacity** 3.

CARBLU

## Waldorf Leura Gardens Resort ◆◆◆◆



Set amidst four and a half acres of landscaped gardens and only minutes from all the attractions of the Blue Mountains.

Town Centre 2km  
Map page 43 Ref. 8

20-28 Fitzroy Street, Leura

### PROPERTY FEATURES:

- Massage facilities
- Restaurants (2 – selected opening times)
- Bar ▪ Guest lounge ▪ Fireplace
- Pool ▪ Spa
- Squash court ▪ DVD library ▪ Parking

### ACCOMMODATION FEATURES:

- Air-conditioning
- Tea/coffee making facilities ▪ Mini bar
- Limited cooking facilities with microwave (Family Resort Rooms and Suites)
- Internet access (wireless – free)
- Cable TV ▪ In-room movies (free)
- CD/DVD player ▪ Hair dryer

### Room serviced daily

From **\$130** PER ROOM PER NIGHT\*

1 APR – 30 SEP 12	ADULTS	1 NT	3 NTS	5 NTS
Resort Room	1 to 2	130	390	650
Deluxe Resort Room	1 to 2	147	441	735
Family Resort Room	1 to 4	165	495	825
Family Resort Suite	1 to 4	199	597	995
1 OCT 12 – 31 MAR 13				
Resort Room	1 to 2	139	417	695
Deluxe Resort Room	1 to 2	156	468	780
Family Resort Room	1 to 4	182	546	910
Family Resort Suite	1 to 4	217	651	1085

**Includes** Full buffet breakfast daily.

**Children** 0 to 11 years – free when sharing with an adult and using existing bedding, room only.

**Max capacity** Resort Room – 2, Deluxe Resort Room – 3, Family Resort Room – 4, Family Resort Suite – 5.

LEUBLU

## Yester Grange Cottages ◆◆◆◆



Character filled cottages, offering exceptional privacy amongst their own acreage of parkland gardens, on the edge of Blue Mountains National Park.

Shop 3km  
Map page 43 Ref. 12

Yester Road, Wentworth Falls

### PROPERTY FEATURES:

- Traditional cottage style accommodation
- Set within 10 acres of parklands and gardens of Yester Grange Estate
- Short stroll to spectacular views
- Direct access to valley and waterfall walking trails
- Parking

### ACCOMMODATION FEATURES:

- Verandah
- CD player
- Air-conditioning (2 Bedrooms)
- Fireplace
- Kitchen
- Tea/coffee making facilities

Cottage serviced weekly

From **\$200** PER ROOM PER NIGHT\*

	ADULTS	2 NTS	3 NTS	4 NTS
1 – 5 APR, 11 APR – 6 JUN, 13 – 28 JUN, 17 JUL – 26 SEP, 3 OCT – 20 DEC 12, 8 JAN – 27 MAR 13				
MONDAY TO THURSDAY				
2 Bedroom	1 to 4	500	750	800
3 Bedroom	1 to 10	700	1050	1200
FRIDAY TO SUNDAY				
2 Bedroom	1 to 4	560	840	N/A
3 Bedroom	1 to 10	900	1350	N/A
6 – 10 APR, 7 – 12 JUN, 29 JUN – 16 JUL, 27 SEP – 2 OCT, 21 DEC 12 – 7 JAN, 28 – 31 MAR 13	ADULTS	4 NTS	5 NTS	7 NTS
2 Bedroom	1 to 4	1160	1450	2030
3 Bedroom	1 to 10	1800	2250	3150

**Children** 0 to 2 years – cot/bed charge payable direct.  
3 to 14 years – adult prices apply.

**Max capacity** 2 Bedroom – 6, 3 Bedroom – 10.

YESBLU

## Echoes' Boutique Hotel & Restaurant ★★★☆



Perched at the edge of the Jamison Valley at Echo Point in the Blue Mountains, offering stunning views from every room.

Town Centre 1km  
Map Page 43 Ref. 5

3 Lillianfels Avenue, Katoomba

### PROPERTY FEATURES:

- Echoes Spa (day spa)
- Restaurant
- Bar
- Room service (limited)
- Internet facilities
- Guest lounge
- Fireplace
- Barbecue area
- Use of facilities at Lillianfels Blue Mountains Resort & Spa
- Parking

### ACCOMMODATION FEATURES:

- Air-conditioning
- Balcony
- Tea/coffee making facilities
- Mini bar
- Cable TV
- CD/DVD player
- Internet access (wireless)
- Spa bath (except Deluxe View rooms)
- Bathrobes
- Ironing facilities
- Hair dryer

Room serviced daily



From **\$700** PER ROOM PER NIGHT\*

	ADULTS	1 NT	2 NTS	5 NTS
1 – 5 APR, 10 APR – 31 AUG, 29 SEP – 1 OCT, 22 DEC 12 – 2 JAN 13				
Deluxe View	1 to 2	729	1458	3645
Corner View	1 to 2	810	1620	4050
Superior Cliff View	1 to 2	810	1620	4050
1 – 28 SEP, 2 OCT – 21 DEC 12, 3 JAN – 28 MAR 13	ADULTS	1 NT	3 NTS	5 NTS
Deluxe View	1 to 2	700	2100	3500
Corner View	1 to 2	780	2340	3900
Superior Cliff View	1 to 2	780	2340	3900

2 night minimum stay applies 9 – 11 Jun, 29 Sep – 1 Oct, 22 Dec 12 – 2 Jan 13.

**Includes** Full breakfast daily.

**Children** 0 to 2 years – cot/bed charge payable direct.  
2 to 12 years – adult prices apply.

**Max capacity** 2.

ECHBLU

## Falls Mountain Retreat ★★★☆



A deluxe hideaway offering contemporary accommodation, nestled amongst tranquil surroundings in the heart of the Blue Mountains.

Shop 1km  
Map page 43 Ref. 11

The Avenue, Wentworth Falls

### PROPERTY FEATURES:

- Acres of landscaped gardens and private mountain forest
- 200 metres from national park walking trails, waterfalls and breathtaking views
- Stylish self-contained studio, suite and apartment style accommodation

### ACCOMMODATION FEATURES:

- Air-conditioning
- Balcony or courtyard
- Kitchen (except Deluxe Loft Studios)
- Spa bath (double, hydrotherapy)
- Fireplace
- CD/DVD player

Room serviced weekly

From **\$240** PER ROOM PER NIGHT\*

	ADULTS	1 NT	2 NTS	3 NTS
1 – 5 APR, 11 APR – 6 JUN, 13 – 28 JUN, 17 JUL – 26 SEP, 3 OCT – 20 DEC 12, 8 JAN – 27 MAR 13				
MONDAY TO THURSDAY				
Deluxe Loft Studio	1 to 2	320	520	720
Premier Spa Suite	1 to 2	350	560	840
FRIDAY TO SUNDAY				
Deluxe Loft Studio	1 to 2	N/A	680	885
Premier Spa Suite	1 to 2	N/A	720	990
6 – 10 APR, 7 – 12 JUN, 29 JUN – 16 JUL, 27 SEP – 2 OCT, 21 DEC 12 – 7 JAN, 28 – 31 MAR 13	ADULTS	4 NTS	5 NTS	7 NTS
Deluxe Loft Studio	1 to 2	1360	1700	2380
Premier Spa Suite	1 to 2	1440	1800	2520

Premier 2 Bedroom prices also available.

**Children** 0 to 2 years – cot/bed charge payable direct.  
3 to 14 years – adult prices apply.

**Max capacity** 3.

FALBLU

## Moments Accommodation ◆◆◆◆◇



Nestled within the Blue Mountains World Heritage area of Wentworth Falls, offering peace, privacy and romance with magnificent views.

Town Centre 2km  
Map page 43 Ref. 10

86 Fletcher Street, Wentworth Falls

### PROPERTY FEATURES:

- Fireplace
- Guest lounge
- DVD library
- Library
- Internet access (wireless – free)
- Direct access to walking trails
- Guest laundry
- Non smoking

### ACCOMMODATION FEATURES:

- Air-conditioning
- Balcony
- Fireplace
- Tea/coffee making facilities
- Cable TV
- CD/DVD player
- iPod docking station
- Spa bath (double)
- Ironing facilities
- Hair dryer

Room serviced daily

From **\$200** PER ROOM PER NIGHT\*

	ADULTS	1 NT	2 NTS	5 NTS
1 – 5 APR, 10 – 24 APR, 26 APR – 10 JUN, 12 JUN – 30 SEP, 2 OCT – 24 DEC 12, 2 – 25 JAN, 29 JAN – 28 MAR 13				
Spa Suite	1 to 2	250	500	1000

Other prices apply 6 – 9 Apr, 25 Apr, 11 Jun, 1 Oct, 25 Dec 12 – 1 Jan, 26 – 28 Jan, 29 – 31 Mar 13 and when stay includes a Saturday night. Mountain Cottage prices also available.

**Includes** Light breakfast hamper daily.

**Children** 0 to 14 years – not catered for.

**Max capacity** 2.

MOMBLU

**SUNLOVER EXCLUSIVE**

FREE full breakfast on one morning for stays of 2 nights or more.

**SUNLOVER BONUS**

FREE Night Offer: Stay 5 nights, pay for 4.  
(5 night price includes 1 free night)

# Blue Mountains

## Fairmont Resort Blue Mountains ◆◆◆◆◆

From **\$180** PER ROOM PER NIGHT\*



### 1 Sublime Point Road, Leura

Fairmont Resort is a unique property located in the World Heritage Listed Blue Mountains, on the edge of the beautiful Jamison Valley, just 90 minutes west of Sydney.

Featuring 210 deluxe rooms with views over the beautiful Jamison Valley or the adjoining Leura Golf Course, the Fairmont Resort is the perfect place for a romantic escape, a get together with a group of friends or family retreat. The Fairmont Resort is a destination in itself with an extensive array of leisure facilities including two restaurants, a bar lounge, indoor and outdoor pool, tennis and squash courts, table tennis, gymnasium and spa treatment facilities. Enjoy its scenic walking tracks along Australian bushland and golf at Leura Golf Course.

The resort is the ideal base to explore local attractions including the Three Sisters, the Scenic and Zig Zag Railway and the charming historic villages of Leura, Katoomba, Blackheath and Wentworth Falls.

### PROPERTY FEATURES:

- Massage and spa treatment facilities
- 24 hour reception
- Restaurants (2)
- Café
- Bar
- Room service (24 hour)
- Guest lounge
- Fireplace
- Theatre
- Games room
- Internet access (wireless)
- Pools (2 – outdoor, indoor, children’s wading)
- Spa
- Sauna
- Tennis courts (2)
- Squash court
- Gymnasium
- Laundry/dry cleaning service
- Guest laundry
- Safety deposit box
- Lift
- Parking
- Non smoking

### ACCOMMODATION FEATURES:

- Air-conditioning
- Tea/coffee making facilities
- Mini bar
- Cable TV
- In-room movies (pay to view)
- Internet access (wireless)
- Bath
- Bathrobes
- Ironing facilities
- Hair dryer
- Safe

### Room serviced daily

Town Centre 4km

Map page 43 Ref. 9



1 APR – 31 MAY, 1 SEP 12 – 31 MAR 13	ADULTS	1 NT	3 NTS	5 NTS
<b>SUNDAY TO FRIDAY</b>				
Fairmont Superior	1 to 2	180	540	900
	1 to 2	210	630	1050
<b>SATURDAY</b>				
Fairmont Superior	1 to 2	200	N/A	N/A
	1 to 2	230	N/A	N/A
<b>1 JUN – 31 AUG 12</b>				
<b>SUNDAY TO FRIDAY</b>				
Fairmont Superior	1 to 2	190	570	950
	1 to 2	220	660	1100
<b>SATURDAY</b>				
Fairmont Superior	1 to 2	240	N/A	N/A
	1 to 2	270	N/A	N/A

**Children** 0 to 12 years – up to 2 children free when sharing with 2 adults and using existing bedding. Cot free of charge.

**Max capacity** 3 adults or 2 adults/2 children.

FAIBLU

### SUNLOVER BONUS

FREE full breakfast for 2 adults daily for stays of 2 nights or more, valid 1 Oct 12 – 31 Mar 13.

FREE breakfast for up to 2 children 0 to 12 years when dining with paying adults in the hotel restaurant.

## Lilianfels Blue Mountains Resort & Spa ★★★★★



Lilianfels Avenue, Echo Point, Katoomba

Set on a spectacular cliff top overlooking the Jamison Valley in the World Heritage Listed Blue Mountains and only a short drive from Sydney, Lilianfels Resort & Spa offers an incredible experience.

The resort is surrounded by two acres of manicured gardens and features the renowned fine dining restaurant Darley's, Lilianfels Day Spa and a welcoming fireplace in the middle of the featured lounge area. With 85 well appointed, stylish and individually decorated rooms, Lilianfels provides a unique opportunity to relax and indulge in natural surrounds.

### PROPERTY FEATURES:

- Lilianfels Day Spa
- 24 hour reception
- Restaurants (2) ■ Bar
- Room service (24 hour)
- Guest lounge ■ Fireplace
- Library ■ Billiards room
- Internet facilities
- Pools (2) ■ Spa ■ Sauna
- Tennis court ■ Exercise equipment
- Laundry/dry cleaning service
- Parking (undercover) ■ Non smoking

### ACCOMMODATION FEATURES:

- Air-conditioning
- Tea-coffee making facilities ■ Mini bar
- In-room movies (pay to view) ■ CD/DVD player
- iPod docking station ■ Internet access (broadband)
- Bathrobes ■ Ironing facilities
- Hair dryer ■ Safe

Room serviced daily

Town Centre 1km  
Map page 43 Ref. 6



From **\$368** PER ROOM PER NIGHT\*



Executive Suite

1 APR - 31 AUG, 22 SEP - 1 OCT, 22 DEC 12 - 2 JAN, 29 - 31 MAR 13	ADULTS	1 NT	2 NTS	3 NTS
SUNDAY TO THURSDAY				
Deluxe Room	2	388	776	1164
Deluxe Valley View Room	2	484	968	1452
Executive Suite	2	533	1066	1599
FRIDAY TO SATURDAY				
Deluxe Room	2	484	968	N/A
Deluxe Valley View Room	2	581	1162	N/A
Executive Suite	2	678	1356	N/A
1 - 21 SEP, 2 OCT - 21 DEC 12, 3 JAN - 28 MAR 13				
SUNDAY TO THURSDAY				
Deluxe	2	368	736	1104
Deluxe Valley View	2	465	930	1395
Executive Suite	2	513	1026	1539
FRIDAY TO SATURDAY				
Deluxe	2	465	930	N/A
Deluxe Valley View	2	562	1124	N/A
Executive Suite	2	732	1464	N/A

Executive Valley View Suite prices also available.

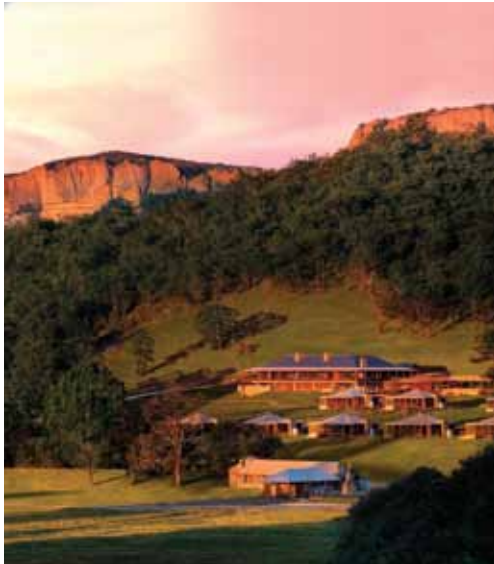
Includes	Full breakfast daily. Daily newspaper.
----------	---

**Children** 0 to 12 years - free when sharing with an adult and using existing bedding, room only.  
Cot free of charge.

**Max capacity** Deluxe - 3, Deluxe Valley View/Executive Suite - 2.

LILBLU

## Wolgan Valley Resort & Spa ◆◆◆◆◆



2600 Wolgan Valley Road, Wolgan Valley

Experience the breathtaking beauty of the Australian wilderness at Wolgan Valley Resort & Spa, located in the Greater Blue Mountains less than three hours by road from Sydney. The resort lies within its own 4,000 acre wildlife and conservation reserve and features 40 luxury stand alone suites, each with its own private swimming pool, distinctive dining and the superb Timeless Spa.

This is the quintessential Australian bush experience - a unique and enriching combination of wildlife, dramatic natural beauty, conservation, heritage and a spectacular Australian bush setting, which can be explored through a range of nature based activities including four wheel drives, heritage tours, wildlife spotting and horse riding.

### PROPERTY FEATURES:

- Timeless Spa (day spa)
- 24 hour reception
- Restaurant ■ Café ■ Bar
- Room service (24 hour)
- Pool ■ Gymnasium ■ Sauna ■ Steam room
- Tennis court ■ Mountain bikes ■ DVD library
- Resort shop ■ Business facilities
- Lift ■ Laundry/dry cleaning service

### ACCOMMODATION FEATURES:

- Private pool ■ Air-conditioning
- Mini bar ■ Gas fireplace ■ Tea/coffee making facilities
- iPod docking station ■ Cable TV ■ CD/DVD player
- Walk-in dressing room ■ Bathrobes
- In-room movies (free) ■ Internet access (wireless)
- 2 bathrooms in Wollemi Suites
- 3 bathrooms in Wolgan Suites
- All rooms non smoking

Room serviced daily

Town Centre 35km  
Map page 43 Ref. 1



From **\$1400** PER ROOM PER NIGHT\*



1 APR 12 - 31 MAR 13	ADULTS	2 NTS	3 NTS	5 NTS
Heritage Suite	1	3500	4200	7000
	2	3900	4680	7800
Wollemi Suite	1 to 4	7000	8400	14000
Wolgan Suite	1 to 6	11000	13200	22000

3 night minimum stay applies 23 Dec 12 - 5 Jan 13.

Includes	All meals, non-alcoholic beverages and selected regional alcoholic beverages with meals daily. Two on-site nature based activities daily.
----------	--

**Children** 0 to 7 years - not catered for.  
8 to 14 years - adult prices apply.

**Max capacity** Heritage Suite - 2, Wollemi Suite - 5, Wolgan Suite - 6.

WLGNSW

# Blue Mountains and Hawkesbury Valley

## The Mountain Heritage Hotel and Spa Retreat ★★★★★



Boutique hotel situated high above Katoomba with breathtaking panoramic views of the World Heritage Listed Blue Mountains wilderness.

Town Centre 500m  
Map page 43 Ref. 4

Corner Apex and Lovel Streets, Katoomba

### PROPERTY FEATURES:

- Spa Sublime (day spa)
- Restaurant
- Bar
- Pool
- Exercise equipment
- Guest laundry
- Parking

### ACCOMMODATION FEATURES:

- Air-conditioning
- Tea/coffee making facilities
- Ironing facilities

Room serviced daily



From **\$276** PER ROOM PER NIGHT\*

1 – 5 APR, 10 – 24 APR, 27 APR – 7 JUN, ADULTS	1 NT	3 NTS	5 NTS
12 – 29 JUN, 2 – 6 JUL, 9 – 13 JUL, 16 – 20 JUL, 23 – 27 JUL, 30 JUL – 27 SEP, 2 OCT – 23 DEC 12, 4 JAN – 28 MAR 13			
Heritage Deluxe	1 to 2	276	828 1380
6 – 9 APR, 25 – 26 APR, 8 – 11 JUN, 28 SEP – 1 OCT, 24 DEC 12 – 3 JAN, 29 – 31 MAR 13			
Heritage Deluxe	1 to 2	296	888 1480

Other prices apply 30 Jun – 1 Jul, 7 – 8 Jul, 14 – 15 Jul, 21 – 22 Jul, 28 – 29 Jul 12.

**Children** 0 to 2 years – cot/bed charge payable direct.  
2 to 11 years – \$11 per child per night.

**Max capacity** 3.

**MOUBLU**

## The Sebel Resort & Spa Hawkesbury Valley ★★★★★



Courtyard

A colonial style resort set on eight acres of landscaped gardens just one hour north west of Sydney.

Town Centre 1km  
Wentworth Falls 55km  
Map page 43 Ref. 13

61 Hawkesbury Valley Way, Windsor

### PROPERTY FEATURES:

- Villa Thalgo Day Spa
- 24 hour reception
- Restaurants (2)
- Bar
- Room service (24 hour)
- Pool (heated indoor)
- Spa
- Sauna
- Tennis courts (2 – floodlit)
- Gymnasium
- Parking

### ACCOMMODATION FEATURES:

- Air-conditioning
- Mini bar
- Tea/coffee making facilities
- Cable TV
- Internet access (wireless)
- Ironing facilities
- Hair dryer

Room serviced daily



From **\$206** PER ROOM PER NIGHT\*

1 APR – 31 AUG 12, 4 – 25 JAN 13	ADULTS	1 NT	3 NTS	5 NTS
Barracks	1 to 2	206	618	1030
Courtyard	1 to 2	236	708	1180
1 SEP – 28 DEC 12, 26 JAN – 31 MAR 13	ADULTS	1 NT	2 NTS	5 NTS
SUNDAY TO THURSDAY				
Barracks	1 to 2	266	532	1330
Courtyard	1 to 2	296	592	1480
FRIDAY TO SATURDAY				
Barracks	1 to 2	337	674	N/A
Courtyard	1 to 2	367	734	N/A

Other prices apply 29 Dec 12 – 3 Jan 13.

**Children** 0 to 11 years – free when sharing with 2 adults and using existing bedding.

**Max capacity** Barracks – 2, Courtyard – 3.

**SEBHKB**

### SUNLOVER BONUS

FREE buffet breakfast daily for stays of 2 nights or more, valid 1 Apr – 31 Aug 12.

## Jenolan Caves



Experience all that Jenolan offers both above and below ground. A Wonders Pass lets you choose from the massive, varied Lucas Cave, colourful, historic Chifley Cave or the easy Imperial Cave. A Jewels Pass offers either the delicate Diamond Cave, awe-inspiring Temple of Baal Cave or the jaw-dropping Orient Cave, considered one of the world's most beautiful caves.

### INCLUDES:

- Wonders Pass – guided tour of Lucas, Chifley or Imperial Cave
- Jewels Pass – guided tour of Diamond, Temple of Baal Cave or Orient Cave
- Self guided tour of Nettle Cave and Devils Coach House
- Souvenir booklet

**Departs:** Daily from Jenolan Caves Guides Office regularly between 9:30am – 5:30pm

**Duration:** 60 to 90 minutes



PRICE:	WONDERS PASS	JEWELS PASS
Adult	\$30	\$36
Child 6-18 years	\$21	\$26

JENOLAN CAVES HOUSE

JCHNSW

## Jenolan Caves 'Down Under'



Travel by coach to the Jenolan Caves and experience one of the world's finest cave systems, with underground rivers and spectacular limestone formations. Stop at the scenic Govetts Leap Lookout and admire the views overlooking the Grose Valley.

### INCLUDES:

- Optional Jenolan Caves tour
- Informative commentary
- Air-conditioned coach travel
- Return transfers from Katoomba and Leura accommodation

**Departs:** Daily from Katoomba at 9:45am

**Returns:** 5:00pm



PRICE:	WITH TRANSFERS	WITH TRANSFERS AND LUCAS CAVE	WITH TRANSFERS AND ORIENT CAVE
Adult	\$53	\$77	\$82
Concession	\$48	\$64	\$72
Child 5-14 years	\$36	\$54	\$59

Jenolan Caves with transfers and admission to both Lucas and Orient Caves also available.

BLUE MOUNTAINS TROLLEY TOURS

BMTBLU

## Blue Mountains Trolley Tour



Take a ride on a unique replica 'Hop On Hop Off' Trolley to 29 great locations. Experience the breathtaking landscapes and natural wonders of the World Heritage Listed Blue Mountains. Utilise the Trolley to access the scenic bushwalks along the cliff face. Enjoy the fantastic sights of Katoomba and the shopping village of Leura with its giftware and coffee shops. This is a chance to experience the best of the Blue Mountains in a fun and informative way.

### INCLUDES:

- 'Hop on Hop Off' at 29 locations
- One hour tour of Leura, the Three Sisters and Scenic World
- Informative commentary

**Departs:** Daily from Katoomba every hour between 9:45am and 4:45am



PRICE:	
Adult	\$25
Concession	\$20
Child 5-14 years	\$15

BLUE MOUNTAINS TROLLEY TOURS

BMTBLU