

## DescaradA Charters



Some 74 secret pieces of paradise are waiting for you in the Whitsundays and you can now discover them in style. DescaradA Charters offer you a tempting island escape within the wonders of one of the most famous boating destinations in the world.

DescaradA takes you for a trip of a lifetime catering to your every need from fine food to fun activities and moments of complete relaxation. This 70 foot luxury motor yacht comes crewed and fully equipped with jet skis, kayaks and a nine-seater rigid inflatable tender. For private charters, scuba diving can be arranged at an extra charge with tank fill station and scuba gear ready on board.

Perfect as a getaway cruise for couples or family, DescaradA's prescheduled tours enable anyone to experience the thrill of luxury boating. For the ultimate in private travel, group up the relatives for a family occasion or share the vessel with your closest friends.

DescaradA accommodates a maximum of eight passengers overnight, providing every guest with an exclusive, intimate experience that is difficult to beat. Enjoy the comfort of your private cabin, lay back and relax under the top deck bimini cover, go full on for the activities of each day or just treat yourself to the culinary creations of the chef. All this with the amazing Whitsundays as a backdrop.

### VESSEL FEATURES:

- Maximum 8 guests
- Air-conditioning
- Lounge area
- Outdoor dining area
- Deck level accommodation with four cabins
- Boarding platform for easy entry to the ocean
- Day beds on the Fly Bridge Level

### CABIN FEATURES:

- Air-conditioning
- Ensuite (Double Ensuite Cabin)

### INCLUDES:

- On board accommodation
- Services of 3 crew
- All meals including morning and afternoon tea
- Non-alcoholic beverages
- Use of snorkelling equipment and kayaks
- Trips on inflatable tender
- Environmental Management Charge and national park fees
- Return transfers from Airlie Beach accommodation

### AVAILABLE AT AN EXTRA CHARGE:

- Use of jet skis (3 Night Cruise)
- Alcoholic beverages
- Seaplane or helicopter scenic flight
- Private charter

### 2 NIGHT CRUISE

#### Day 1: Nara Inlet

The first destination of your weekend island escape is Nara Inlet. Nestled in this spectacular scenery, dinner is served whilst watching the sun set over the Australian mainland.

#### Day 2: Whitehaven Beach and Hill Inlet

Take a walk to explore ancient Aboriginal caves before departing for Australia's landmark beach, Whitehaven. View Hill Inlet from a scenic lookout, take a walk or just relax on this amazing white silica sand beach.

#### Day 3: Manta Ray Bay and Langford Island

Cruise to Manta Ray Bay for some of the best snorkelling in the area. Afternoon stop is Langford Island with its coral sand beach before returning to Abel Point Marina.



DOUBLE CABIN

### 3 NIGHT CRUISE

#### Day 1: Whitehaven Beach and Hill Inlet

DescaradA heads for Australia's landmark beach, Whitehaven. Passing through Hook Passage you get your first real impression of these magnificent sceneries. Take a walk, view Hill Inlet from a scenic lookout, relax on the amazing white silica sand beach or play on the kayaks.

#### Day 2: Manta Ray Bay

From Whitehaven Beach you cruise to Manta Ray Bay for some of the best snorkelling in the area. The anchorage for the night is Blue Pearl Bay on the north western tip of Hayman Island.

#### Day 3: Langford Island and Nara Inlet

Explore the beautiful bays underwater with amazing coral and fish life. After passing Hayman Island Resort have a quick stop at Langford Island, a true coral cay. Cruise by Hook Island, pass Stonehaven and toward Nara Inlet. Take a walk to explore ancient Aboriginal caves, kayak along the inlet or sit back and enjoy the stunning views.

#### Day 4: Return to Abel Point Marina

### DEPARTURE INFORMATION:

From Abel Point Marina, Airlie Beach

#### 2 NIGHT CRUISE

Departs: Friday at 4pm  
Returns: Sunday at 4pm

#### 3 NIGHT CRUISE

Departs: Tuesday at 10am  
Returns: Friday at 10am

### PRICE PER PERSON TWIN SHARE

	2 NIGHT	3 NIGHT
Twin Cabin	\$1000	\$1500
Double Cabin	\$1150	\$1725
Double Ensuite Cabin	\$1250	\$1875

Solo use cabin and private charter also available. Due to weather, tides or mechanical reasons, the itinerary may be subject to change without notice.

DESWSY

# Whitsunday Cruising and Sailing

## Oceanic Pearl Barefoot Cruises



QUEEN STATEROOM



TWIN STATEROOM

Oceanic Pearl is by all accounts a gentleman's yacht. Originally built in Portugal in 1972, she was later fitted out as a luxury motor cruiser in the famous Malehide boat yards in Ireland before crossing the Indian Ocean to Australia. Refitted in 2009 for chartering, she now offers the option of three or six night cruises around the Whitsunday Islands.

With her classic warm timber panelling and brass fittings, this 23 metre motor yacht offers stable and comfortable cruising for 10 guests and three crew. The charming lounge area offers a warm ambience for dining or alternatively you can enjoy a casual alfresco lunch or barbecue on the top deck with a spectacular view of the islands.

There is a choice of accommodation including staterooms with individual air-conditioning and large ensuites, one single cabin and one double cabin with shared bathroom facilities.

The itinerary is flexible and allows plenty of time for relaxing on board, beachcombing on uninhabited islands and snorkelling through amazing coral reefs. You will also have the opportunity to do some island walks where you will visit ancient Aboriginal rock art and try your hand at reef fishing.

### VESSEL FEATURES:

- Maximum 10 guests
- Lounge and dining area ■ Top deck barbecue
- Stateroom with queen bed
- Staterooms with twin beds (2)
- Single cabin with single berth
- Double cabin with double and single berth
- Air-conditioning (Staterooms) ■ Ensuite (Staterooms)
- Share bathroom facilities (Cabins)

### INCLUDES:

- On board accommodation ■ Services of 3 crew
- All meals including morning and afternoon tea
- Use of snorkelling and fishing equipment
- Stereo surround system ■ Ice maker



### DEPARTURE INFORMATION:

#### 3 NIGHT CRUISE

**From Shute Harbour and Hamilton Island Marina**

Departs: Tuesday and Saturday from Shute Harbour at 11am, Hamilton Island at 2pm

Returns: Friday to Hamilton Island at 10am, Shute Harbour at 12 noon

Tuesday to Shute Harbour and Hamilton Island between 10am and 12:30pm

#### 6 NIGHT CRUISE

**From Shute Harbour and Hamilton Island Marina**

Departs: Saturday from Shute Harbour at 11am, Hamilton Island at 2pm

Returns: Tuesday to Shute Harbour and Hamilton Island between 10am and 12:30pm

### PRICE PER PERSON

	3 NIGHT	6 NIGHT
Single Cabin	\$1325	\$2385
Twin/Double Cabin	\$1325	\$2385
Twin Stateroom	\$1550	\$2790
Queen Stateroom	\$1750	\$3150

\$30 Environmental Management Charge and national park levy payable direct. Child prices on application.

**BARWSY**

## Apollo III Barefoot Cruises



Apollo III is a 55 foot ocean racing yacht that has campaigned in most of the major yacht races around the world including seven Sydney to Hobart's. Designed by Ben Lexcen for Alan Bond, she was used as a sail training boat for the successful America's Cup campaign. Catering for a maximum of only 12 guests, her flat decks and full headroom throughout offer comfort with the excitement of fast sailing. You too can become part of the crew of this performance racing yacht. Set the sails, grind the winches or take a turn at the helm. During the two days you will visit spectacular Whitehaven Beach, go snorkelling amongst some of the most amazing coral fringed coves of Hook Island, and do some awesome evening in between. The evening will be spent in one of the numerous sheltered bays under the stars of the southern sky.

### VESSEL FEATURES:

- Maximum 12 guests
- Open plan accommodation with Single or Double Berths

### INCLUDES:

- On board accommodation
- Services of 2 crew
- All meals and afternoon tea
- Use of snorkelling equipment

### DEPARTURE INFORMATION:

**From Abel Point Marina, Airlie Beach**

Departs: Tuesday, Friday and Sunday at 8:30am

Returns: Wednesday, Saturday and Monday at 4:30pm



### PRICE PER PERSON

	1 NIGHT
Single Berth	\$319
Double Berth	\$339

Double Berth prices are per person based on two people sharing. Not suitable for children under 4 years. \$30 Environmental Management Charge and national park levy payable direct.

**BARWSY**

## Coral Trekker Barefoot Cruises



STATEROOM

Nothing quite matches the feeling of standing on the deck of a square rigged sailing ship with the wind in your face and the smell of salt in the air as you watch the huge red sails billowing aloft. Perhaps lying on deck with the vast night sky above and the sound of water gently lapping the sides of the boat comes close.

Built in Norway in 1939 and fully refurbished in 2002, Coral Trekker has a unique and charming character. She is 23 metres in length and is elegantly appointed with warm timbers and brass throughout. Accommodation is available in double staterooms, twin cabins and one four berth cabin.

The itinerary is flexible and unhurried allowing plenty of time for sailing, snorkelling amongst the fringing coral reefs, bush and beach walks or just relaxing on the wide open decks.

This cruise offers friendly personalised service and with only 14 guests on board there is lots of room to move. The wonderful fresh meals and good humour of the crew will also keep you content while exploring these unique and magnificent islands.

### VESSEL FEATURES:

- Maximum 14 guests
- Large open deck area
- Covered wheelhouse area for dining

### CABIN FEATURES:

- Stateroom with double bed, Twin Cabins and Multi-Share Cabin with bunk beds

### INCLUDES:

- On board accommodation
- Services of up to 4 crew
- All meals including morning and afternoon tea
- Use of snorkelling equipment

### AVAILABLE AT AN EXTRA CHARGE:

- Scuba diving for beginners or certified divers
- Beverages

### 3 NIGHT CRUISE

#### Day 1: Blue Pearl Bay and Black or Langford Island

Sail to Blue Pearl Bay on Hayman Island for snorkelling with thousands of tropical fish. Following afternoon tea, move to Black or Langford Island and go ashore for swimming or beachcombing.

#### Day 2: Nara Inlet, Hill Inlet

After another morning's snorkel amongst the fringing coral reefs, sail to Nara Inlet. After lunch take a walk up to see the Aboriginal cave paintings and the majestic view over the long narrow inlet. Sail down to Hill Inlet and Whitehaven Beach for overnight anchorage.

#### Day 3: Whitehaven Beach, South Molle Island

After breakfast take a walk up to the lookout at Eagles Landing for a view of one of Australia's most beautiful beaches. Walk down the other side and take a swim in the crystal blue waters of Whitehaven Beach. After lunch a long sail back through Solway Pass to South Molle Island for the evening's anchorage.

#### Day 4: Return to the marina

After breakfast, sail back through the islands to the marina for disembarkation.

### DEPARTURE INFORMATION:

#### 3 NIGHT CRUISE

From Abel Point Marina, Airlie Beach

Departs: Saturday at 1pm  
Returns: Tuesday at 11:30am to Shute Harbour

From Shute Harbour, Airlie Beach

Departs: Tuesday at 12:30pm  
Returns: Friday at 10am to Abel Point Marina

#### 6 NIGHT CRUISE

From Abel Point Marina, Airlie Beach

Departs: Saturday at 1pm  
Returns: Friday at 10am

### PRICE PER PERSON

	3 NIGHT	6 NIGHT
Multi Share	\$899	\$1619
Twin Cabin	\$999	\$1799
Stateroom	\$1069	\$1925

Twin Cabin and Stateroom prices are per person based on two people sharing. Sole Use prices also available. Not suitable for children under 4 years. \$30 Environmental Management Charge and national park levy payable direct. Due to weather, tides or mechanical reasons, the itinerary may be subject to change without notice.

BARWSY

# Whitsunday Sailing

## Whitsundays Sailing Adventures

Sail, dive, snorkel, kayak, explore, beachwalk, bushwalk or relax.

Whitsundays Sailing Adventures offers the most diverse range of quality crewed sailing and diving adventure holidays in the Great Barrier Reef Marine Park. From Performance Sailing to Classic Aussie Cruising, Eco Tallship Safaris, Outer Reef and Island Diving or Sail and DiveCats. Whitsundays Sailing Adventures has got it all. Their fleet of 15 vessels are all owner operated resulting in a focus on vessel and crew standards, fantastic food, personalised service and a truly individual and unique experience. A variety of two day one night, two day two night, three day two night, three day three night and six day six night cruise options are available.

Cruising for Couples – Go on spoil yourself with an upgrade to a private double cabin, many are air conditioned and some even have ensuites. Just look for the cruises that have Private Double prices.

### Choose your cruise:

- 
- Adventure Sailing
- 
- Eco Tallship Adventures
- 
- Sail and Dive Adventures
- 
- Sail and DiveCats
- 



PACIFIC SUNRISE

## Adventure Sailing Whitsundays Sailing Adventures



Eco Safaris, Thrill & Chill – Performance or Classic Aussie Cruising. Sail, snorkel, explore, beachwalk, bushwalk, learn or relax.

If scuba diving is not on your list of things to do and you would like to spend more time sailing, snorkelling, exploring, beach and bushwalking, learning about the reef and rainforest or just relaxing and taking in the spectacular scenery then an Adventure Sailing cruise is for you. Choose from Silent Night – Thrill and Chill – Performance Sailing, Waltzing Matilda – Classic Aussie Cruising or SV Whitehaven – Eco Sailing Safaris.

### INCLUDES:

- On board accommodation
- All meals
- Use of fresh linen
- Use of wetsuits and snorkelling equipment
- National park and marine park entry fees

### DEPARTURE INFORMATION:

From Abel Point Marina, Airlie Beach

### PRICE PER PERSON

CRUISE	DURATION	DEPARTS	RETURNS	NO. OF GUESTS	MULTI SHARE	PRIVATE DOUBLE
Waltzing Matilda	2 day/1 night	Tue, Thu, Sat at 8:30am	Wed, Fri, Sun at 4pm	14	\$359	\$399
SV Whitehaven	2 day/2 night	Tue, Thu, Sun at 1pm	Thu, Sat, Tue at 11am	24	\$429	N/A
Silent Night	2 day/2 night	Mon, Wed, Fri at 2pm	Wed, Fri, Sun at 11:30am	12	\$469	\$579

Private Double prices are per person based on two people sharing. Other cabin types also available.

**WSAWSY**

## Eco Tallship Adventures Whitsundays Sailing Adventures



Reef and Island Eco Interpretation Experiences.

Sail, snorkel, explore, beachwalk, bushwalk, learn or relax.

Combining style, space, grace and the heritage of sailing with a focus on reef, rainforest and wildlife eco interpretation by formally trained crew. For over 15 years Tallship Adventures has been showcasing the magic of the Whitsundays World Heritage Listed islands to visitors from across the globe. Eco Tallships caters for the more discerning traveller aboard their two historic Tallships.

### INCLUDES:

- On board accommodation
- All meals
- Use of fresh linen
- Use of wetsuits and snorkelling equipment
- National park and marine park entry fees

### DEPARTURE INFORMATION:

From Abel Point Marina, Airlie Beach

### PRICE PER PERSON

CRUISE	DURATION	DEPARTS	RETURNS	NO. OF GUESTS	MULTI SHARE	PRIVATE DOUBLE
Alexander Stewart	3 day/2 night	Mon, Fri at 8:30am	Wed, Sun at 3pm	18	\$590	\$660
Derwent Hunter	3 day/2 night	Tue, Sat at 8:30am	Thu, Mon at 3pm	19	\$590	\$699

Private Double prices are per person based on two people sharing. Other cabin types also available.

**WSAWSY**



## Sail and Dive Adventures Whitsundays Sailing Adventures



Outer Reef or Islands.

Sail, dive, snorkel, kayak, explore, beachwalk, bushwalk or relax.

If you have ever dreamed of scuba diving on the Great Barrier Reef, this is your chance. Whitsundays Sailing Adventures has the largest range of Sail and Dive Adventure options available in the Whitsunday Region of the Great Barrier Reef Marine Park. Whether you're a first timer or a certified diver, want to dive the island fringing coral or visit the Outer Barrier Reef, this is the experience that you've been looking for. If you don't want to dive but your travelling buddies or partner does, don't be put off, Sail and Dive Adventure Cruises are jam packed with other activity options. You can snorkel, bushwalk, beachwalk or just relax and soak up the sun while the divers do their thing under the water.

### INCLUDES:

- On board accommodation
- All meals
- Use of fresh linen
- Use of wetsuits and snorkelling equipment
- National park and marine park entry fees

### DEPARTURE INFORMATION:

From Abel Point Marina, Airlie Beach

### PRICE PER PERSON

CRUISE	DURATION	DEPARTS	RETURNS	NO. OF GUESTS	MULTI SHARE	PRIVATE DOUBLE
Emperors Wings <sup>^</sup>	2½ day/3 night	Tue at 1pm	Fri at 8:30am	26	\$585	N/A
Summertime	3 day/2 night	Thu, Sun at 9am	Sat, Tue at 3pm	16	\$595	\$685
Kiana <sup>^</sup>	3 day/2 night	Mon, Fri at 8:30am	Wed, Sun at 4pm	14	\$649	\$699
Pacific Sunrise	3 day/3 night	Wed, Sun at 4pm	Sat, Wed at 11am	21	\$699	\$744
Pacific Sunrise	6 day/6 night	Sun at 4pm	Sat at 11am	21	\$1300	\$1390

Private Double prices are per person based on two people sharing. <sup>^</sup> Cruises visit the Outer Great Barrier Reef. Other cabin types also available. **WSAWSY**

## Sail and DiveCats Whitsundays Sailing Adventures



Adventure Diving Specialists.

Sail, dive, snorkel, kayak, explore, beachwalk, bushwalk or relax.

Sail and DiveCat Adventures – Wings 2 and 3, Adventurer and Powerplay deliver an exciting sailing and diving experience for the fun seeking adrenalin enthusiasts. All Sail and DiveCats explore the Great Barrier Reef Marine Park. These cruises offer introductory dive adventures as well as catering for certified divers. Sail and DiveCat tours are packed with activities on a range of modern, fast catamarans. All vessels are air-conditioned and are equipped with the latest dive equipment. Whitsunday Blue and Getaway cater for the more discerning customer with only eight guests in four private double cabins with ensuites.

### INCLUDES:

- On board accommodation
- All meals
- Use of fresh linen
- Use of wetsuits and snorkelling equipment
- National park and marine park entry fees

### DEPARTURE INFORMATION:

From Abel Point Marina, Airlie Beach

### PRICE PER PERSON

CRUISE	DURATION	DEPARTS	RETURNS	NO. OF GUESTS	MULTI SHARE	PRIVATE DOUBLE
Wings 2	2 day/2 night	Mon, Wed, Sat at 1pm	Wed, Fri, Mon at 12 noon	25	\$475	N/A
Wings 3	2 day/2 night	Fri, Sun at 1pm	Sun, Tue at 12 noon	25	\$475	N/A
Powerplay	2 day/2 night	Tue, Thu, Sat at 12 noon	Thu, Sat, Mon at 11am	18	\$495	\$545
Adventurer	2 day/2 night	Tue, Thu, Sat at 11am	Thu, Sat, Mon at 1pm	12	\$495	\$545
Whitsunday Blue	2 day/2 night	Mon, Thu at 3pm	Wed, Sat at 1pm	8	\$655	\$735
Whitsunday Getaway	2 day/2 night	Fri, Sun at 3:30pm	Sun, Tue at 1pm	8	N/A	\$735
Whitsunday Blue	3 day/3 night	Wed at 5pm	Sat at 1pm	8	\$825	\$895
Whitsunday Getaway	3 day/3 night	Tue at 5pm	Fri at 1pm	8	N/A	\$895

Private Double prices are per person based on two people sharing. Other cabin types also available.

**WSAWSY**

# Whitsunday Sailing

## Solway Lass Explore Whitsundays



Explore the Whitsundays aboard the magnificent tall ship Solway Lass. With 11 sails and 5,500 square feet of sail area, Solway Lass provides you with an authentic and romantic feel of a bygone sailing era. Help raise the sails or take the helm and steer Solway Lass around the islands. There's time to snorkel, dive, swim, sunbake and explore islands. While at anchor try the famous swing rope, lay in the bow net or enjoy an icy cold drink from the licensed bar.

**VESSEL FEATURES:**

- Maximum 32 guests ■ Fully licensed bar
- Large deck area ■ Shared bathrooms
- Air-conditioned cabins

**INCLUDES:**

- On board accommodation ■ Skipper and crew
- All meals including morning and afternoon tea
- Use of linen and bath towels
- Use of snorkelling equipment and instruction
- National park and marine park entry fees
- Return transfers from Airlie Beach accommodation

**DEPARTURE INFORMATION:**

**From Abel Point Marina, Airlie Beach**  
**3 NIGHT CRUISE**

Departs: Saturday and Tuesday at 7:30pm  
 Returns: Tuesday and Friday at 4:30pm

**6 NIGHT CRUISE**

Departs: Saturday at 7:30pm  
 Returns: Friday at 4:30pm



**PRICE PER PERSON**

	3 NIGHT	6 NIGHT
Multi Share	\$559	\$969
Private Twin Cabin	\$599	\$1009
Private Double Cabin	\$599	\$1009

**Children:** 2 to 14 years – prices on application.  
 Private Cabin prices are per person based on two people sharing. Sole use prices also available. 6 Night Cruise is back to back 3 Night Cruises, on Tuesday afternoon a meal at a local restaurant is included.



## Whitsunday Magic Explore Whitsundays



PRIVATE DOUBLE SUITE

Experience comfort and style on the Whitsunday's largest and most unique sailing vessel – Whitsunday Magic, a purpose built Mediterranean style three masted deluxe schooner. Take a turn at the wheel, trim the sails and help the crew pull the lines. At the end of the day enjoy a drink from the bar as you await the fabulous cuisine from the on board chef. Choose between a 3 Night Reef Cruise which includes a day at the Outer Reef or the 3 Night Islands Cruise or combine the two for a truly remarkable Whitsunday experience.

**VESSEL FEATURES:**

- Maximum 32 guests ■ Fully licensed bar
- Formal dining area ■ Large deck area
- Private air-conditioned cabins with ensuites

**INCLUDES:**

- On board accommodation
- Captain, Purser and crew
- All meals
- Use of linen and bath towels
- Glass bottom boat for coral viewing
- Use of snorkelling equipment and instruction
- Dive team and equipment (introductory and certified dives available at an extra charge, payable direct)
- National park and marine park entry fees
- Return transfers from Airlie Beach accommodation

**DEPARTURE INFORMATION:**

**From Abel Point Marina, Airlie Beach**  
**3 NIGHT ISLANDS CRUISE**

Departs: Monday at 4pm  
 Returns: Thursday at 1pm

**3 NIGHT REEF CRUISE**

Departs: Friday at 4pm  
 Returns: Monday at 1pm

**6 NIGHT REEF AND ISLANDS CRUISE**

Departs: Friday at 4pm  
 Returns: Thursday at 1pm



**PRICE PER PERSON**

	3 NT ISLANDS	3 NT REEF	6 NT REEF & ISLANDS
Multi Share	\$749	\$789	\$1349
Private Twin Cabin	\$819	\$859	\$1549
Private Double Cabin	\$819	\$859	\$1549
Private Double Suite	\$1089	\$1139	\$1949

**Children:** 2 to 14 years – prices on application.  
 Private Cabin and Suite prices are per person based on two people sharing. Sole use prices and transfers from Hamilton Island also available.



## Maxi and Adventure Sailing Explore Whitsundays



HAMMER



RAGAMUFFIN II

Sail the 74 Whitsunday Islands, snorkel spectacular reefs, swim amongst colourful fish and much more.

**Maxi Sailing (M):** Enjoy high action sailing on famous ocean racing maxi yachts. Offering sailing for the 18 to 35s and the young at heart, yachts are spacious with plenty of flat deck space and a social atmosphere.

**Adventure Sailing (A):** Perfect if you're looking for a sailing adventure with a quieter, smaller group of people. Sail on a fleet of smaller yachts from 50 to 68 foot while enjoying plenty of time to explore the islands, snorkel and relax.

### INCLUDES:

- On board accommodation ■ Skipper and crew
  - Use of linen and bath towels ■ Use of snorkelling equipment
  - All meals ■ Guided island walks and snorkelling tours
  - National park and marine park entry fees
  - Return transfers from Airlie Beach accommodation<sup>†</sup>
- <sup>†</sup> Included on Adventure Sailing cruises only.

### DEPARTURE INFORMATION:

From Abel Point Marina, Airlie Beach



### PRICE PER PERSON

CRUISE	DURATION	DEPARTS	RETURNS	GUESTS	STYLE	ADULT
Siska	2 day/1 night	Odd days of month at 8:30am	Next day at 4pm	22	M	\$349
Hammer <sup>^</sup>	2 day/1 night	Even days of month at 8:30am	Next day at 4pm	22	M	\$349
Condor <sup>^</sup>	2 day/2 night	Tue, Thu, Sun at 2pm	Thu, Sat, Tue at 11am	29	M	\$419
British Defender	2 day/2 night	Tue, Thu, Sat at 2pm	Thu, Sat, Mon at 11am	28	M	\$419
Boomerang	2 day/2 night	Wed, Fri, Sun at 2pm	Fri, Sun, Tue at 11am	28	M	\$419
Broomstick	2 day/2 night	Mon, Wed, Sat at 2pm	Wed, Fri, Mon at 11am	25	M	\$419
Southern Cross <sup>^</sup>	3 day/2 night	Tue, Fri at 9:30am	Thu, Sun at 4:30pm	14	A	\$509
Ragamuffin II	3 day/2 night	Mon, Thu at 9:30am	Wed, Sat at 4:30pm	13	A	\$509
Ron of Argyll	3 day/2 night	Wed, Sun at 9:30am	Fri, Tue at 4:30pm	12	A	\$509
Eureka <sup>^</sup>	3 day/2 night	Wed, Sat at 9:30am	Fri, Mon at 4:30pm	15	A	\$509

Prices are per person based on multi share in open plan single bunks and double berths.

<sup>^</sup> Private Double Cabin prices on Hammer, Condor, Southern Cross and Eureka also available.

EXPWSY

## Learn to Sail Explore Whitsundays, Whitsunday Marine Academy



Learn to sail in Australia's premier sailing ground, the Whitsunday Islands with Explore Whitsundays, Whitsunday Marine Academy. The Academy conducts both recreational and professional courses and is accredited by International Yachtmaster Training (YT) with qualifications recognised in 26 countries. The recreational learn to sail program includes the Introductory Course, Competent Crew Course and Bareboat Skipper Course.

### 3 DAY INTRODUCTORY COURSE

Designed to be a fun introduction to the sailing of a yacht and for those with little or no prior experience but who would like to enjoy the fun of cruising the Whitsundays as well as learning the basics of sailing a yacht.

### 6 DAY INTERNATIONAL CREW COURSE

A six day, five night comprehensive course that will give you the skills to become an active crew member of a yacht and plenty of days to practice your new found skills.

### 6 DAY BAREBOAT SKIPPER COURSE

The six day, five night course for the Bareboat Skipper Certificate is one of basic pilotage, boat handling, seamanship and navigation intended to assist candidates to skipper a vessel in familiar waters.

### INCLUDES:

- Multi share accommodation on board for duration of course
- All meals including morning and afternoon tea
- Professional and fully qualified instructor
- Use of linen and snorkelling equipment
- Log book, course notes and certificate
- National park and marine park entry fees

### DEPARTURE INFORMATION:

From Abel Point Marina, Airlie Beach

### 3 DAY INTRODUCTORY COURSE

Commences: Monday and Thursday at 9am  
Concludes: Wednesday and Saturday at 4:30pm

### 6 DAY COMPETENT CREW COURSE

Commences: Monday at 9am  
Concludes: Saturday at 4:30pm

### 6 DAY BAREBOAT SKIPPER COURSE

Commences: Monday at 9am  
Concludes: Saturday at 4:30pm

### PRICE PER PERSON

3 Day Introductory Course	\$779
6 Day International Crew Course	\$1399
6 Day Bareboat Skipper Course	\$1769

EXPWSY

# Whitsunday Skipper Yourself



If you thought sailing a yacht through the Whitsunday Islands was a mere pipe dream, think again. Become skipper of your own 'bareboat', and enjoy unlimited access to the quiet corners of the Whitsundays. Take control of your holiday and drift about the Whitsundays in style. Imagine stopping near a deserted beach for a sunset stroll, or dropping anchor for a spot of snorkelling or fishing away from the crowds. With 74 islands to sail amongst, you're spoilt for choice.

Whitsunday waters are mostly protected, so they're considered among the safest in the world, and your bareboat charter company will give you a hands on briefing so you're familiar with the vessel. Daily radio contact with your charter company is also assured, so whether you choose a catamaran, motor cruiser or yacht, you're always safe with professional advice close at hand.

## What you need to know

### EXPERIENCE

You will need some experience at the helm of a yacht, big or small. Some vessels require a higher level of experience. Prior to arrival, you will be asked about your boating experience. All operators provide a comprehensive "hands on" briefing before you set sail on your vessel. If you require some guidance, you may be required to hire a fully experienced sail guide who will show you the ropes and get you on your way.

### FULLY EQUIPPED BOATS

Don't let the term "bareboat" mislead you. All charter vessels are equipped with everything you need to make your holiday carefree and enjoyable. Galley gear, toilet and shower, fishing and snorkelling equipment, dinghy with outboard motor as well as navigation and safety equipment are included in most charter costs. Most include a barbecue on deck. The majority of bareboat holidays will include a "basic essentials" kit. These packs may contain items like sponges, scourers, matches, detergent, paper towels, insect repellent, garbage bags, toilet paper, guest soap and air freshener.

### PROVISIONING

A variety of food provisioning packs can be arranged in advance and stowed before you set sail. Emphasis is placed on the freshest foods available. The quantity is carefully considered for the number of people in your party and to provide optimum value for money.

### OPTIONAL EXTRAS

Sailboards and scuba diving equipment are available to hire at an extra charge. Skippers and cooks can also be hired.

### WHAT TO PACK

Come as casual as you like – in fact you will probably spend most of your time in your swimsuit soaking up the sun, swimming and snorkelling. If you're planning a night at an island resort, smart casual dress is required. Don't forget a hat, sunscreen, sandals (they'll probably get wet) and perhaps jeans and a jacket for cooler evenings. Remember – suitcases are difficult to stow. Bring soft luggage wherever possible.

### CHARTER AGREEMENT

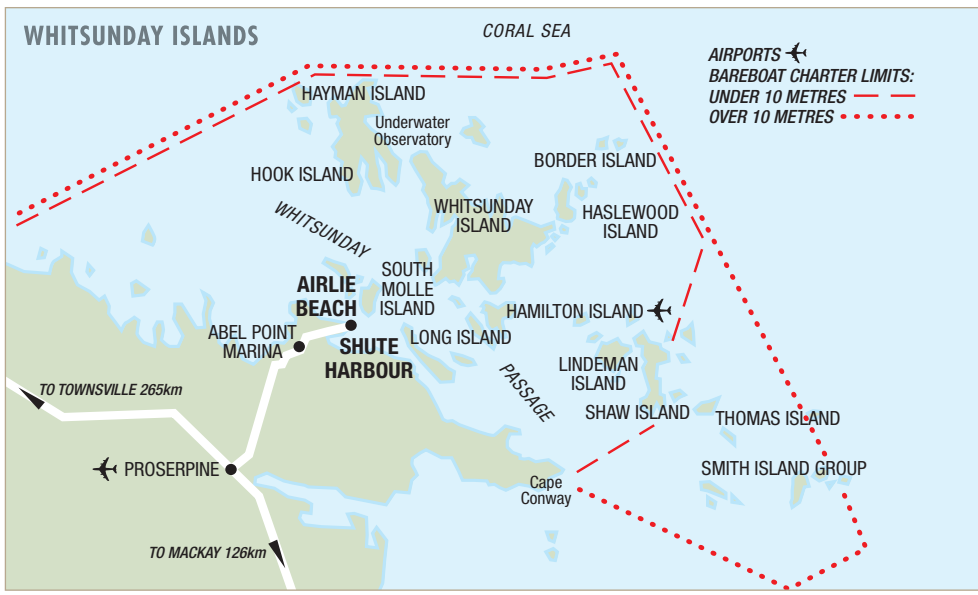
You will be required to sign a Charter Agreement prior to paying your deposit. It is important that you understand the terms and conditions of charter, as cancellation fees will apply once your deposit has been paid.

### DAMAGE WAIVER AND BOND

A Damage Waiver is payable direct to the operator for all Skipper Yourself Holidays. All companies require the damage waiver to be paid on commencement of the charter along with a signed credit card authority. Skipper Yourself companies also reserve the right (without showing cause) to apply a bond of up to \$2500.

### DEPOSITS AND FINAL PAYMENT

A minimum security deposit of \$550 per vessel is required within 7 days of confirmation of your booking. Full payment of your holiday cost must be made no later than 60 days prior to travel.



## Queensland Yacht Charters



Queensland Yacht Charters is well known as the Whitsunday's largest owner-operated charter company. Choose from a wide range of yachts and catamarans, all are fully equipped and include a dinghy for getting ashore. Available from Abel Point Marina, Airlie Beach or Hamilton Island.

### INCLUDES:

- Full pre-charter briefing pack which includes planning chart of the Whitsundays and Queensland Yacht Charter's exclusive Operations and Safety Manual and DVD
- Area and boating briefing
- Use of linen, bath towels and blankets
- Electric anchor winch
- Dinghy with outboard motor
- Use of snorkelling equipment
- Bimini (sun awning) and spray dodgers
- CD/DVD player
- Barbecue on deck
- Wind, speed and depth instruments
- Cabin fans
- Refrigerator
- Deck shower
- Hot and cold pressurised water
- Selected vessels: GPS, TV, auto pilot, air-conditioning, microwave, inverter, fish finder

### NOT INCLUDED:

- \$17 per person Environmental Management Charge payable direct
- \$8 per person administration fee payable direct
- Compulsory Damage Waiver, between \$200 and \$700 per charter depending on vessel size payable direct
- Fuel

### AVAILABLE AT AN EXTRA CHARGE:

- Pick-up or drop-off at Hamilton Island from \$200 each way
- Sail guide from \$180 for half day
- Provisioning

LOW SEASON: 9 JAN – 31 MAR 12

MID SEASON: 1 APR – 16 SEP, 10 OCT 11 – 8 JAN 12

HIGH SEASON: 17 SEP – 9 OCT 11

Charter price per vessel per night. Minimum charter period is 5 nights.

VESSEL TYPE	LOW SEASON	MID SEASON	HIGH SEASON	MAX BERTHS	NO OF PEOPLE RECOM.
<b>CLASSIC YACHTS</b>					
Catalina 350	\$500	\$550	\$630	4	2
Bavaria 39	\$610	\$650	\$750	6	6
Bavaria 42	\$640	\$690	\$790	7	6
Beneteau Cyclades 43	\$700	\$750	\$830	8	6
<b>PREMIUM YACHTS</b>					
Bavaria 34	\$515	\$565	\$650	4	2
Bavaria 40	\$640	\$690	\$790	6	6
Bavaria 45	\$850	\$990	\$1100	8	8
<b>CLASSIC CATAMARANS</b>					
Seawind 1000	\$540	\$600	\$710	8	6
Seawind 1160.3	\$740	\$800	\$920	8	6
Elite 4000	\$770	\$830	\$950	10	8
<b>PREMIUM CATAMARANS</b>					
Seawind 1000XL	\$600	\$690	\$800	6	4
Fountaine Pajot 36.3	\$700	\$800	\$990	6	4
Seawind 1160.3	\$780	\$860	\$1040	8	6
Fountaine Pajot 40	\$880	\$1090	\$1200	10	8
Seawind 1250	\$900	\$1150	\$1340	8	8
Fountaine Pajot 41	\$920	\$1190	\$1370	10	8
Fountaine Pajot 48	\$1300	\$1550	\$1800	12	8
<b>CLASSIC MOTOR CRUISERS</b>					
Sundecker 36	\$450	\$500	\$570	4	4
<b>PREMIUM MOTOR CRUISERS</b>					
Fountaine Pajot 46 <sup>^</sup>	\$1300	\$1500	\$1750	10	8

<sup>^</sup> High level of experience is required to charter this vessel. Other vessels also available.

QLDWSY

### SUNLOVER BONUS

Cruise 7 nights for the price of 6, cruise 10 nights for the price of 8 or cruise 13 nights for the price of 10, valid 1 – 17 Apr, 26 Apr – 31 Aug, 1 Nov – 18 Dec 11.

Cruise 7 nights for the price of 5, cruise 10 nights for the price of 7 or cruise 14 nights for the price of 10, valid 9 Jan – 31 Mar 12.

## Sunsail



Sunsail is a world-renowned yacht charter company with 37 years of global experience. Sunsail's vessels are among the industry's finest, with a fleet of immaculately appointed yachts and catamarans to suit every group size and budget.

A self-sail yacht charter holiday is truly the ultimate way to escape the crowds and discover the breathtaking beauty of the Whitsundays.

Available from Hamilton Island Marina, Hayman Island and Abel Point Marina, Airlie Beach.

### INCLUDES:

- Marina berth at Hamilton Island for duration of charter
- 2 to 4 hour charter briefing
- Hamilton Island Airport and Marina transfers
- Crockery, cutlery and cooking utensils
- Barbecue on deck
- Use of linen, bath towels and blankets
- Bimini (sun awning)
- Hot and cold pressurised water on all vessels
- Dinghy with outboard motor
- Safety and navigational equipment
- Use of snorkelling equipment
- Internal and external showers
- CD player with cockpit speakers
- Selected vessels: air-conditioning

### NOT INCLUDED:

- \$16.50 per person Environmental Management Charge payable direct
- \$7.50 per person administration fee payable direct
- Yacht Damage Waiver, between \$50 and \$58 per vessel per day depending on vessel size payable direct
- Fuel levy, between \$21 and \$29 per day depending on vessel size payable direct
- Genset charges, \$5 per hour payable direct

### AVAILABLE AT AN EXTRA CHARGE:

- Pick-up or drop-off at Abel Point Marina (Airlie Beach) \$250 each way or Hayman Island from \$350 each way
- Sail guide from \$175 for half a day
- Provisioning

LOW SEASON: 1 – 8 APR 11, 8 JAN – 31 MAR 12

MID SEASON: 28 APR – 30 JUN, 16 JUL – 11 AUG, 8 OCT – 17 DEC 11

HOLIDAY SEASON: 9 – 27 APR, 1 – 15 JUL, 18 DEC 11 – 7 JAN 12

HIGH SEASON: 12 AUG – 7 OCT 11

Charter price per vessel per night. Minimum charter period is 5 nights.

VESSEL TYPE	LOW SEASON	MID SEASON	HOLIDAY SEASON	HIGH SEASON	MAX BERTHS	NO OF PEOPLE RECOM.
<b>STANDARD YACHTS</b>						
Sunsail Oceanis 323	\$420	\$550	\$615	\$675	4	2
Sunsail Oceanis 343	\$455	\$565	\$635	\$750	4	2
Sunsail Oceanis 361	\$520	\$660	\$735	\$860	6	6
Sunsail 43	\$655	\$885	\$945	\$1070	8	6
<b>PREMIER YACHTS</b>						
Sunsail 36i	\$565	\$715	\$795	\$930	6	6
Sunsail 39i	\$665	\$800	\$865	\$1055	6	6
Sunsail 44i	\$720	\$985	\$1025	\$1170	10	8
Sunsail 49i	\$850	\$1110	\$1170	\$1370	10	8
Sunsail 53	\$970	\$1260	\$1335	\$1575	10	8
<b>STANDARD CATAMARANS</b>						
Sunsail Lagoon 380	\$780	\$1030	\$1145	\$1340	8	8
Sunsail Lagoon 410	\$855	\$1100	\$1230	\$1440	8	8
Sunsail Lagoon 440	\$1285	\$1575	\$1815	\$1820	8	8
<b>PREMIER CATAMARANS</b>						
Sunsail 384	\$840	\$1095	\$1225	\$1430	8	8
Sunsail 403	\$880	\$1150	\$1285	\$1500	8	6
Sunsail 464	\$1415	\$1765	\$1945	\$1990	10	8

All prices are subject to change without notice. Learn to Sail Holidays also available.

SUNHTI

# Whitsunday Skipper Yourself

## Whitsunday Rent A Yacht

One of the biggest bareboat companies and longest running operators in the area, Whitsunday Rent A Yacht has coordinated romantic getaways, fun family holidays and group sailing adventures in the Whitsundays for more than 29 years.

Choose the ideal holiday boat to suit you from a wide range of luxury or standard, 2 to 12 berth vessels. All are fully equipped for your safety, convenience and pleasure. You are prepared for your charter holiday in the relaxed atmosphere of new modern premises, with charter facilities unmatched in Australia, located at Whitsunday Rent a Yacht's own private jetty at Shute Harbour. Hamilton Island departure and return options are available at an extra charge.

Basic boating knowledge but no boat licence is required and professional cruise guides are with you for the first three hours of your charter to show you how safe and easy bareboating is. You will soon learn the ropes and be ready to set off on the cruising holiday of a lifetime.

Available from their private jetty at Shute Harbour, Hamilton Island Marina, Hayman or Daydream Island.



**INCLUDES:**

- Pre-charter information and briefing DVD
- Navigation equipment
- Area and boat briefing for three hours with qualified cruise guide
- Wet weather gear
- Free overnight mooring at Shute Harbour during charter
- Tool kit
- Use of linen
- Dinghy with outboard motor
- Use of snorkelling equipment
- Safety kit
- Refrigerator
- Cassette or CD player
- Barbecue on deck
- Pressurised fresh hot/cold water
- VHF radio
- Fully equipped galley
- Bimini (sun awning) and spray dodgers
- Selected vessels: microwave, TV, VCR, air-conditioning, seaphone

**NOT INCLUDED:**

- \$18.50 per person Environmental Management Charge payable direct
- \$6.50 per person administration fee payable direct
- Compulsory Damage Waiver of \$100 per vessel per night, payable direct
- Fuel

**AVAILABLE AT AN EXTRA CHARGE:**

- Pick-up or drop-off at Daydream Island from \$100 each way or Hamilton Island from \$190 each way or Hayman from \$350 each way
- Sail guide from \$40 per hour or \$355 plus meals overnight
- Provisioning
- Scuba diving equipment

**LOW SEASON: 9 JAN – 31 MAR 12**  
**MID SEASON: 1 APR – 31 AUG, 1 NOV – 25 DEC 11**  
**HIGH SEASON: 1 SEP – 31 OCT, 26 DEC 11 – 8 JAN 12**

Charter price per vessel per night. Minimum charter period is 5 nights.

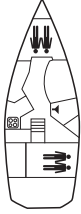


**BUDGET YACHTS**

**CATALINA 320**

Length 9.9 metres  
 Engine size 27 h.p.  
 Fresh water 187 litres  
 Fridge 156 litres

**Ideal for 4 people**

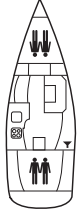


**STANDARD YACHTS**

**BENETEAU 323**

Length 9.95 metres  
 Engine size 20 h.p.  
 Fresh water 260 litres  
 Fridge 60 litres

**Ideal for 4 people**

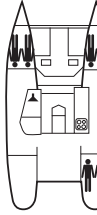


**STANDARD CATAMARANS**

**SEAWIND 1000**

Length 9.65 metres  
 Engine size 2 x 9.9 h.p.  
 Fresh water 400 litres  
 Fridge 106 litres

**Ideal for 6 people**

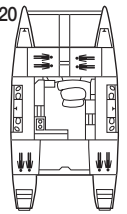


**ELITE CATAMARANS**

**BENETEAU LAGOON 420**

Length 12.61 metres  
 Engine size 2 x 75 h.p.  
 Fresh water 850 litres  
 Fridge 266 litres

**Ideal for 8 people**

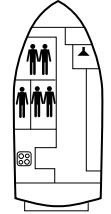


**BUDGET MOTOR CRUISERS**

**FAIRWAY 36**

Length 10.85 metres  
 Engine size 220 h.p.  
 Fresh water 500 litres  
 Fridge 282 litres

**Ideal for 5 people**



VESSEL TYPE	LOW SEASON	MID SEASON	HIGH SEASON	MAX BERTHS	NO OF PEOPLE RECOM.
<b>BUDGET YACHTS</b>					
Catalina 320	\$450	\$500	\$580	6	4
Bavaria 42	\$600	\$670	\$770	8	8
<b>STANDARD YACHTS</b>					
Beneteau 323	\$450	\$525	\$610	4	4
Jeanneau 37	\$550	\$610	\$710	6	6
Jeanneau 40	\$570	\$620	\$720	8	6
Bavaria 39	\$570	\$650	\$770	7	6
Jeanneau 35	\$600	\$550	\$620	6	4
<b>ELITE YACHTS</b>					
Beneteau 31	\$450	\$510	\$590	4	4
Beneteau 43.4	\$720	\$780	\$870	8	8
Bavaria 46	\$750	\$890	\$995	10	8
Beneteau 50.5	\$950	\$1150	\$1300	11	8
<b>BUDGET CATAMARANS</b>					
Seawind 34/1000	\$500	\$580	\$680	8	6
<b>STANDARD CATAMARANS</b>					
Seawind 1000	\$550	\$630	\$720	8	6
Seawind 1200	\$780	\$880	\$1090	8	8
Perry 43	\$950	\$1050	\$1300	10	8
Perry 43 AC	\$990	\$1100	\$1350	10	8
<b>ELITE CATAMARANS</b>					
Seawind 1160	\$790	\$890	\$1070	8	6
Beneteau Lagoon 380	\$890	\$990	\$1250	8	8
Beneteau Lagoon 400	\$1100	\$1250	\$1500	8	8
Perry 43 Prestige	\$1100	\$1250	\$1500	10	8
Beneteau Lagoon 420	\$1300	\$1580	\$1890	10	8
<b>BUDGET MOTOR CRUISERS</b>					
Fairway 36	\$500	\$570	\$670	7	5
<b>STANDARD MOTOR CRUISERS</b>					
Fairway 36	\$600	\$670	\$790	7	5
Warwick 42	\$600	\$670	\$790	10	6
Venturer 38	\$785	\$850	\$950	8	6
<b>ELITE MOTOR CRUISERS</b>					
Highland 35	\$750	\$840	\$910	6	6