

# Southern Queensland Islands

## Heron Island ♦♦♦♦

From **\$398** PER ROOM PER NIGHT\*



Reef Room

### Heron Island, via Gladstone



Heron Island is a true coral cay, located right on the Great Barrier Reef. The island is ribboned by sugar white sands, crystal clear waters and acres of brilliant coral with beautifully coloured marine life – a real nature lover's paradise.

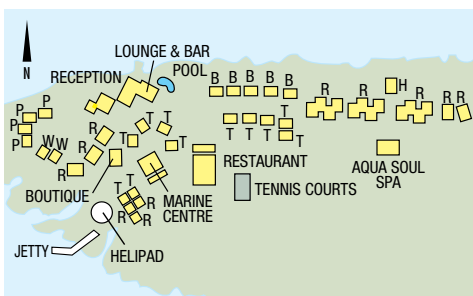
Heron offers many activities such as guided island and reef walks, semi-submersible cruises and beach picnics. An amazing array of animal and bird life can also be discovered throughout the year. And of course, Heron is famous for its scuba diving and snorkelling.

Heron Island is a haven of marine colour and relaxation, with stunning ocean views from many of the rooms.

### PROPERTY FEATURES:

- Restaurant ▪ Bar ▪ Guest lounge ▪ Pool
- Aqua Soul Spa (day spa) ▪ Boutique ▪ Dive shop
- Marine Park Interpretive Centre ▪ Internet facilities
- Guest laundry ▪ Heron Kids Junior Rangers Program (7-12 years) operating Australian eastern seaboard school holidays (extra charge) ▪ Departure showers
- Tennis court (floodlit) ▪ Public telephones

**ACCOMMODATION:** T. TURTLE ROOM, R. REEF ROOM, B. BEACHSIDE SUITE, W. WISTARI SUITE, P. POINT SUITE, H. BEACH HOUSE



### COMPLIMENTARY ACTIVITIES INCLUDE:

- Guided reef and island ecology walks
- Tennis ▪ Birdlife walks ▪ Wildlife presentations
- Board games ▪ Snorkelling lessons in swimming pool
- Stargazing ▪ Nature slide show

### ACTIVITIES AVAILABLE AT AN EXTRA CHARGE:

- Scuba diving ▪ Guided snorkelling tour
- Semi-submersible coral viewing cruise
- Fishing trips ▪ Sunset wine and cheese cruise
- Snorkelling equipment ▪ Spa treatments and massage

### DAY SPA FEATURES:

- Individual treatment rooms (2) ▪ Massage ▪ Facials
- Body treatments ▪ Manicure and pedicures

### ACCOMMODATION FEATURES:

- Air-conditioning (Wistari/Point Suites and Beach House)
- Fan ▪ Balcony or patio ▪ Tea/coffee making facilities
- Mini bar, CD player (except Turtle and Reef Rooms)
- Hair dryer

### Room serviced daily

Check-in 2pm Check-out 10am

Map page 13 Ref. 9

### HOW TO GET THERE:

From Gladstone Airport – 30 minutes by scheduled helicopter.

<b>PRICE:</b>	<b>ONE WAY</b>
Adult	\$370
Child 2-12 years	\$200

Prices are subject to change without notice.

From Gladstone Marina – 2 hours by launch.

Courtesy coach transfers are available between Gladstone Airport and Marina to meet launch arrival and departure.

<b>PRICE:</b>	<b>ONE WAY</b>
Adult	\$100
Child 2-12 years	\$50

Transfers must be booked in conjunction with accommodation.

### ROOM AND ALL MEALS

	ADULTS	1 NT	3 NTS	5 NTS
1 – 3 APR, 17 APR – 13 DEC 12, 15 JAN – 26 MAR 13				
Turtle Room	1 376	1128	1880	
	2 398	1194	1990	
Reef Room	1 477	1431	2385	
	2 499	1497	2495	
Beachside Suite	1 607	1821	3035	
	2 629	1887	3145	
Point Suite/Wistari Suite	1 807	2421	4035	
	2 829	2487	4145	
Beach House	1 847	2541	4235	
	2 869	2607	4345	
4 – 16 APR, 14 DEC 12 – 14 JAN, 27 – 31 MAR 13	ADULTS	1 NT	3 NTS	5 NTS
Turtle Room	1 437	1311	2185	
	2 459	1377	2295	
Reef Room	1 517	1551	2585	
	2 539	1617	2695	
Beachside Suite	1 647	1941	3235	
	2 669	2007	3345	
Point Suite/Wistari Suite	1 847	2541	4235	
	2 869	2607	4345	
Beach House	1 877	2631	4385	
	2 899	2697	4495	

Extra person charge: \$139 per person per night.

**Includes** Breakfast, buffet lunch and three course or buffet dinner daily.

**Children** 0 to 12 years – See Kids Stay and Eat FREE Program (except Point Suite and Wistari Suite).

**Max capacity** Turtle Room – 4, Reef Room – 5, Beachside Suite/Beach House – 4, Point Suite/Wistari Suite – 2 adults.

**HERHEI**

### SUNLOVER BONUS

FREE return launch transfers from Gladstone for 2 adults for stays of 4 nights or more, valid 1 May – 31 Aug 12.

### KIDS STAY AND EAT FREE PROGRAM

Children 0 to 12 years stay and eat FREE when sharing with an adult and using existing bedding, cot free of charge.

## Wilson Island ♦♦♦♦♦

From **\$1100** PER ROOM PER NIGHT



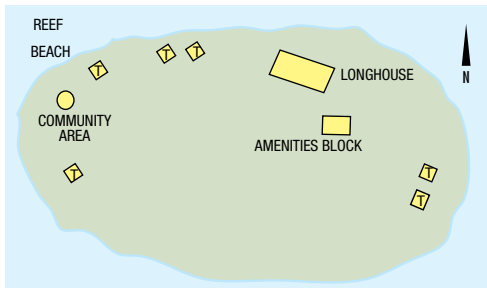
### Wilson Island, via Gladstone and Heron Island

Wilson Island is a tiny coral cay located just 40 minutes from Heron Island. A divine sweep of castor sugar sands that is home to turtles and birds, Wilson is both part of the Great Barrier Reef and surrounded by it. Its pristine waters host an unimaginable variety of marine life including colourful coral and fish, with some of the best snorkelling just off the beach.

Offering designer-inspired tented accommodation, Wilson Island provides just 12 guests with access to the magnificent reef and beach environments, including rare turtle and bird breeding grounds.

A true communion with nature is at the core of the Wilson Island experience – to live and enjoy life as a castaway. Days can be filled snorkelling and exploring the island, watching turtles and birds nesting and the birth of hatchlings (seasonal), or simply lazing in a hammock. Wilson Island is the Great Barrier Reef as nature intended.

### ACCOMMODATION: T. SAFARI TENT



### PROPERTY FEATURES:

- 6 permanent tented rooms
- Shared amenities
- Community tent
- Longhouse – central dining and relaxation area
- Library of educational books, novels and magazines

### COMPLIMENTARY ACTIVITIES INCLUDE:

- Snorkelling and use of equipment
- Guided reef and island walks
- Nature walks ■ Board games
- Nature viewing – watch Green and Loggerhead turtles laying their eggs or their baby hatchlings emerging from their nests (in season)

### ACCOMMODATION FEATURES:

- Raised timber deck
- King bed
- Hammock
- Bathrobes
- Toiletries
- 1 designated private shower and dressing area per tent, located in the washhouse
- Insect screens

Room serviced daily

Map page 13 Ref. 8



### HOW TO GET THERE:

**From Gladstone** – By launch or helicopter to Heron Island. Refer to page 30 for details.

**From Heron Island** – 40 minutes by launch.

Transfers between Heron and Wilson Islands on check-in and check-out are included in the accommodation price. Guests will be met on arrival at Heron Island.

### ROOM AND ALL MEALS

	ADULTS	1 NT	3 NTS	5 NTS
1 APR 12 – 25 JAN, 1 – 31 MAR 13				
Safari Tent	1	853	2559	4265
	2	1100	3300	5500

Resort is closed 26 Jan – 28 Feb 13.

Includes	All dining and beverages including premium Australian wines daily. Return transfers from Heron Island.
----------	--

**Children** 0 to 12 years – not catered for.

**Max capacity** 2.

WILWIL

### SUNLOVER BONUS

FREE return launch transfers from Gladstone to Heron Island for 2 adults for stays of 4 nights or more, valid 1 May – 31 Aug 12.

### EXCLUSIVELY YOURS

#### INCLUDES:

- Exclusive use of Wilson Island Resort for up to 12 people
- All dining and beverages including premium Australian wines daily
- Return transfers from Heron Island

PRICE	ADULTS	2 NTS	3 NTS
1 APR 12 – 25 JAN, 1 – 31 MAR 13			
Wilson Island Resort	12	8433	12650
Longer stays also available.			

# Southern Queensland Islands

## Lady Elliot Island Eco Resort ◆◆◆

From **\$276** PER ROOM PER NIGHT\*



### Lady Elliot Island, via Hervey Bay or Bundaberg



Situated right on the Great Barrier Reef, Lady Elliot is a nature retreat, true coral island and a designated marine park, home to green and loggerhead turtles and sea birds (seasonal). Guests can literally step off the beach into an underwater paradise teeming with coral, fish, turtles and manta rays. Relaxed modest accommodation is near the beachfront where you can completely unwind.

#### PROPERTY FEATURES:

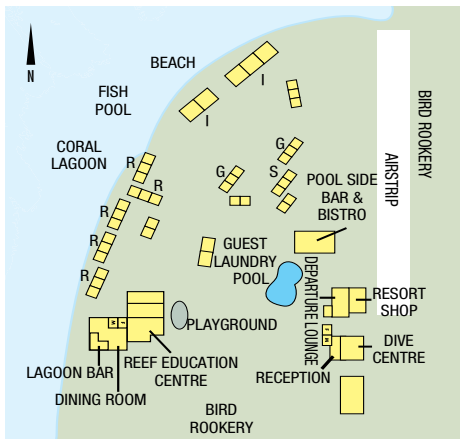
- Restaurant ■ Bar ■ Pool ■ Reef Education Centre
- Dive shop ■ Children's playground ■ Library
- Resort shop ■ Public telephone ■ Guest laundry
- Reef Rangers Kids Club (5-12 years) operating selected school holidays (extra charge)

#### COMPLIMENTARY ACTIVITIES INCLUDE:

- Reef walking ■ Snorkelling and use of equipment
- Fish feeding ■ Turtle tours (Nov – Apr)
- Table tennis ■ Bird watching (seasonal)
- Volleyball ■ Island history walk ■ Behind the scenes tour
- Whale migration (Jul – Oct) ■ Climate change tour

#### ACCOMMODATION:

S. SHEARWATER BUNK ROOM, G. GARDEN UNIT, R. REEF UNIT, I. 2 BEDROOM ISLAND SUITE



#### ACTIVITIES AVAILABLE AT AN EXTRA CHARGE:

- Scuba diving (courses available)
- Snorkelling tour
- Glass bottom boat tour

#### ACCOMMODATION FEATURES:

- Air-conditioning (2 Bedroom Island Suite)
- Fan ■ Balcony
- Tea/coffee making facilities (except Shearwater Bunk Room)
- Refrigerator (except Shearwater Bunk Room)

#### Room serviced daily

Check-in 1pm Check-out 10am

Map page 13 Ref. 10

#### HOW TO GET THERE:

From Bundaberg or Hervey Bay – 30 minutes or 40 minutes respectively by air. A baggage limit of 10kg per person applies.

#### PRICE:

	RETURN
Adult	\$262
Child 3-12 years	\$143

Transfers must be booked in conjunction with accommodation. Air transfers from Sunshine Coast, Brisbane or Gold Coast also available.

#### ROOM, BREAKFAST AND DINNER

	ADULTS	1 NT	2 NTS	5 NTS
1 – 5 APR, 10 APR – 15 DEC 12, 16 JAN – 31 MAR 13 <sup>^</sup>				
Shearwater Bunk Room	2	386	772	1544
Garden Unit	2	476	952	1904
Reef Unit	2	530	1060	2120
2 Bedroom Island Suite	2	N/A	1304	2608
6 – 9 APR, 16 DEC 12 – 15 JAN 13				
Shearwater Bunk Room	2	416	832	2080
Garden Unit	2	506	1012	2530
Reef Unit	2	570	1140	2850
2 Bedroom Island Suite	2	N/A	1384	3460

3 night minimum stay applies 20 Dec 12 – 5 Jan 13.

Includes	
	Buffet breakfast and dinner daily. Glass bottom boat and snorkelling tour per person. Environmental Management Charge.

**Children** 0 to 2 years – cot/bed charge payable direct.  
3 to 12 years – \$61 per child per night valid 1 – 5 Apr, 10 Apr – 15 Dec 12, 16 Jan – 31 Mar 13, \$69 per child per night valid 6 – 9 Apr, 16 Dec 12 – 15 Jan 13.

**Max capacity** Garden Unit/Reef Unit/2 Bedroom Island Suite – 4, Shearwater Bunk Room – 6.

#### LADLYT

#### REEF AND RAINFOREST

##### INCLUDES:

- 2 nights accommodation at Lady Elliot Island Eco Resort including buffet breakfast and dinner daily
- Glass bottom boat and snorkelling tour per person
- Environmental Management Charge
- Return air transfers from Hervey Bay to Lady Elliot Island
- 2 nights accommodation at Kingfisher Bay Resort, Fraser Island including buffet breakfast daily
- Ranger guided Fraser Island Beauty Spots Tour
- Return coach & ferry transfers from Hervey Bay to Fraser Island

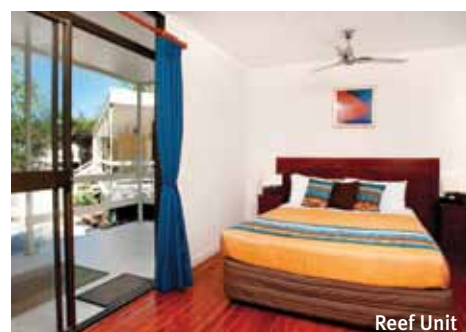
##### PRICE PER PERSON

	ADULTS	4 NTS
1 – 5 APR, 10 APR – 15 DEC 12, 16 JAN – 31 MAR 13		
Reef Unit/Resort Hotel	2	1206

Child prices on application. Refer to page 33 for further details on Kingfisher Bay Resort.

#### SUNLOVER BONUS

<sup>^</sup> FREE Night Offer: Stay 5 nights, pay for 4 or stay 7 nights, pay for 5. (5 night price includes 1 free night)



Reef Unit

## Kingfisher Bay Resort ★★★★★

From **\$188** PER ROOM PER NIGHT\*



Lake McKenzie



### Fraser Island, via Hervey Bay



Kingfisher Bay Resort is the gateway to the World Heritage wilderness of Fraser Island, its ancient rainforests, spectacular fresh-water lakes and famous 75 Mile Beach.

Kingfisher Rangers conduct four wheel drive tours, nature walks and activities such as birdwatching, stargazing and fishing clinics. There are also seasonal dolphin search and whale watch cruises.

The resort rests among tree-covered dunes on the edge of the calm waters of the Great Sandy Strait – a paradise for boating, fishing, swimming, bush walking and four wheel driving. Ideal for a fun family holiday or a relaxing getaway.

### PROPERTY FEATURES:

- Restaurants (3) ▪ Café
- Bars (6)
- General store
- Pools (4)
- Spa
- Massage and beauty therapy
- Tennis court
- Children's playground
- Guest laundry
- Kids Junior Eco Ranger program (4-14 years) operating weekends and school holidays (extra charge)
- Child minding available (extra charge)

### COMPLIMENTARY ACTIVITIES INCLUDE:

- Beach volleyball
- Selected nature walks
- Bushtucker walks

### ACTIVITIES AVAILABLE AT AN EXTRA CHARGE:

- 4WD ranger-guided eco tours
- Whale watching (Aug – Oct)
- Canoeing
- 4WD hire ▪ Tennis
- Spa treatments and massage
- Nature walks ▪ Fishing
- Watersports

Book your Fraser Island 4WD and whale watching tours before you travel. Ask your travel agent for details.

### ACCOMMODATION FEATURES:

- Air-conditioning (Hotel rooms)
- Balcony ▪ Kitchen (Villas)
- Refrigerator ▪ Tea/coffee making facilities
- Television ▪ Telephone ▪ Hair dryer
- Laundry (Villas) ▪ Ironing facilities

Hotel Room serviced daily  
Villa serviced every 3 days

Check-in 2pm Check-out 10am  
Map page 13 Ref. 11

Villas ★★☆☆

### HOW TO GET THERE:

From Brisbane Airport – 4 hours 15 minutes by coach to River Heads, Hervey Bay and 50 minutes by ferry.

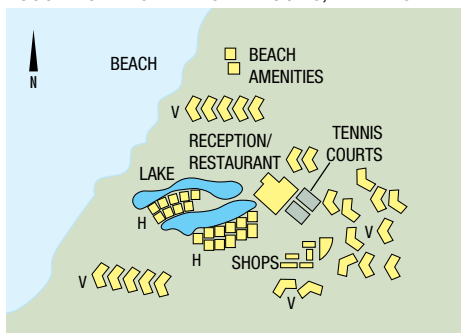
PRICE:	COACH ONE WAY	FERRY ONE WAY
Adult	\$90	\$25
Child 4-14 years	\$90	\$13

From Fraser Coast Airport – 20 minutes by coach to River Heads, Hervey Bay and 50 minutes by ferry.

PRICE:	COACH ONE WAY	FERRY ONE WAY
Adult	\$18	\$25
Child 4-14 years	\$18	\$13

Transfers must be booked in conjunction with accommodation. 4WD vehicular barge transfers also available.

### ACCOMMODATION: H. HOTEL ROOMS, V. VILLAS



### FRASER ALL OVER PACKAGE

#### INCLUDES:

- 3 nights accommodation
- Full buffet breakfast daily
- Return ferry transfers from River Heads
- Full day Beauty Spots tour
- Full day Champagne Pool tour

PRICE PER PERSON	ADULTS	3 NTS	EXTRA NTS
------------------	--------	-------	-----------

1 APR 12 – 31 MAR 13			
Resort Hotel	2	659	120

Child prices on application. Other room types and Fraser Island Adventure Package also available.

### ROOM ONLY

	ADULTS	1 NT	2 NTS	4 NTS
1 – 5 APR, 10 APR – 20 DEC 12, 7 JAN – 28 MAR 13				
Resort Hotel	1 to 3	188	376	752
Resort Bay View Hotel	1 to 3	238	476	952
Resort Hotel Spa	1 to 3	238	476	952
1 Bedroom Loft Villa	1 to 2	N/A	516	1032
2 Bedroom Standard Villa	1 to 4	N/A	536	1072
2 Bedroom Spa Villa	1 to 4	N/A	636	1272
2 Bedroom Loft Villa	1 to 6	N/A	716	1432
3 Bedroom Spa Villa	1 to 6	N/A	816	1632
3 Bedroom Executive Villa	1 to 6	N/A	856	1712
6 – 9 APR, 21 DEC 12 – 6 JAN, 29 – 31 MAR 13				
Resort Hotel	1 to 3	564	752	940
Resort Bay View Hotel	1 to 3	714	952	1190
Resort Hotel Spa	1 to 3	714	952	1190
1 Bedroom Loft Villa	1 to 2	954	1272	1590
2 Bedroom Standard Villa	1 to 4	984	1312	1640
2 Bedroom Spa Villa	1 to 4	1134	1512	1890
2 Bedroom Loft Villa	1 to 6	1254	1672	2090
3 Bedroom Spa Villa	1 to 6	1404	1872	2340
3 Bedroom Executive Villa	1 to 6	1464	1952	2440

**Children** 0 to 14 years – free when sharing with an adult and using existing bedding.

**Max capacity** Resort Hotel/Resort Bay View Hotel/Resort Hotel Spa – 3, 1 Bedroom Loft Villa – 2, 2 Bedroom Standard Villa/2 Bedroom Spa Villa – 4, 2 Bedroom Loft Villa/3 Bedroom Spa Villa/3 Bedroom Executive Villa – 6.

KINFRI

# Southern Queensland Islands

## Tangalooma Island Resort ★★★☆



### Moreton Island, via Brisbane



With over 80 tours and activities only a 75 minute cruise from Brisbane, the hardest decision will be how long to stay at Tangalooma Island Resort. Surrounded by pristine waters and untouched national parks, the resort is the perfect destination for your next escape.

A highlight of any stay is the opportunity to interact closely with nature. Each evening wild bottlenose dolphins eagerly swim up to the beach to be hand fed fresh fish by resort guests, an unforgettable experience. This is in addition to the many other Eco based nature experiences such as the Marine Discovery cruise and Whale Watching cruises that the island resort offers.

Stay within 50 metres of the beach amidst landscaped gardens and natural bushland with a range of accommodation to suit every style and budget.

Tangalooma's wide range of resort facilities caters for everyone, from families and couples, to those seeking action or a nature based experience in a truly relaxing environment.

**ACCOMMODATION: H. HOTEL ROOM/HOTEL DELUXE ROOM, R. RESORT UNIT/RESORT SUITE, V. 2 BEDROOM VILLA, D. DEEP BLUE APARTMENTS**

### PROPERTY FEATURES:

- Restaurants (2) ▪ Café
- Room service (limited) ▪ Bistro
- Bars (3) ▪ Evening entertainment
- Pools (3) ▪ Tennis court
- Tanga Tours Active Kidz Club (8-14 years) operating school holidays and other selected dates (extra charge)

### COMPLIMENTARY ACTIVITIES INCLUDE:

- Dolphin feeding program (conditions apply)
- Tennis ▪ Beach volleyball
- Archery ▪ Basketball ▪ Table tennis
- Croquet ▪ Eco walks ▪ Squash
- Golf driving net and putting green
- Marine Education and Conservation Centre

### ACTIVITIES AVAILABLE AT AN EXTRA CHARGE:

- Whale Watching (Jun-Oct)
- Marine Discovery cruise
- Fishing ▪ 4WD tour ▪ ATV Quad Bike tour
- Desert Safari tour (including sand tobogganing)
- Kayaking ▪ Scuba diving
- Snorkelling equipment and tours
- Helicopter flights
- Parasailing ▪ Catamarans
- Island tour ▪ Dinghy hire

Book your Marine Discovery Cruise, Whale Watching Cruise, Desert Safari tour and ATV Quad Bike tour before you travel. Ask your travel agent for details.

### ACCOMMODATION FEATURES:

- Air-conditioning (except Villas)
- Fan (Villas)
- Balcony or patio (except Resort Units and Resort Suites)
- Kitchen with microwave (Villas and Deep Blue Apts)
- Limited cooking facilities (Resort Units and Resort Suites)
- Television
- Telephone
- Washing machine (Villas and Deep Blue Apartments)

### Room serviced daily

Check-in 12:30pm Check-out 10am

Map page 13 Ref. 12

Deep Blue Apartments ★★★☆

### HOW TO GET THERE:

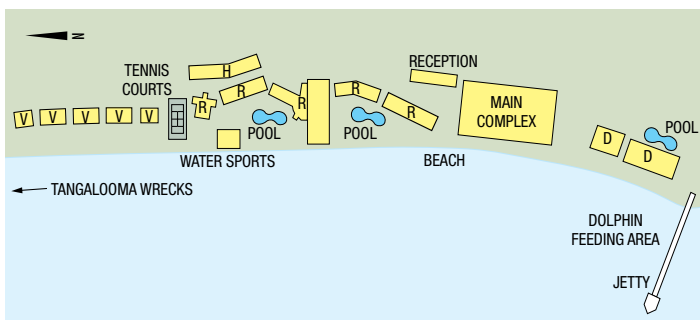
From Brisbane Transit Centre, selected Brisbane hotels and Brisbane Airport to Holt St Wharf – 15 minutes by coach from Transit Centre or Airport. 90 minutes from selected Brisbane hotels.

PRICE:	RETURN
Adult	\$40
Child 3-14 years	\$20

From Holt St Wharf, Pinkenba, Brisbane – 75 minutes by launch.

PRICE:	RETURN
Adult	\$80
Child 3-14 years	\$45

Transfers must be booked in conjunction with accommodation.



From **\$207** PER ROOM PER NIGHT\*



## WILD DOLPHIN PACKAGE

### INCLUDES:

- 1 nights accommodation
- Full buffet breakfast daily
- Wild dolphin feeding on one night
- Daily maid service
- 12:30pm check-in
- FREE Night Offer: Stay 7 nights, pay for 6
- DOLPHIN GETAWAY ESCAPE FREE NIGHT OFFER: Stay 3 nights, pay for 2, valid 1 May – 31 Aug 12

PRICE PER PERSON	ADULTS	1 NT	EXTRA NTS
1 – 5 APR, 10 APR 12 – 28 MAR 13			
Hotel Room	2	155	155
Resort Unit	2	170	170
Resort Suite	2	180	180
Hotel Deluxe Room	2	195	195

2 night minimum stay applies 24 Dec 12 – 7 Jan 13. Child prices on application. Other prices apply 6 – 9 Apr 12, 29 – 31 Mar 13. 2 Bedroom Villa and Deep Blue 2, 3 and 4 Bedroom Apartment prices also available.

## DOLPHIN GETAWAY

### INCLUDES:

- 2 nights accommodation
- Full buffet breakfast daily
- Wild dolphin feeding on one night
- 3pm check-in
- FREE Night Offer: Stay 7 nights, pay for 6

PRICE PER PERSON	ADULTS	2 NTS	EXTRA NTS
1 – 5 APR, 10 APR 12 – 28 MAR 13			
Hotel Room	2	245	123
Resort Unit	2	275	138
Resort Suite	2	295	148
Hotel Deluxe Room	2	325	163
2 Bedroom Villa <sup>+</sup>	2	345	173
Deep Blue 2 Bedroom Apartment <sup>+</sup>	2	495	248
Deep Blue 3 Bedroom Apartment <sup>+</sup>	2	595	298
Deep Blue 4 Bedroom Apartment <sup>+</sup>	2	695	348

<sup>+</sup> 3 night minimum stay applies 24 Dec 12 – 7 Jan 13. No daily maid service. Child prices on application. Other prices apply 6 – 9 Apr 12, 29 – 31 Mar 13.

## ROOM ONLY

	ADULTS	1 NT	2 NTS	4 NTS
1 – 5 APR, 10 APR 12 – 28 MAR 13				
Hotel Room <sup>^</sup>	2	320	640	1280
Resort Unit <sup>^</sup>	2	350	700	1400
Resort Suite <sup>^</sup>	2	370	740	1480
Hotel Deluxe Room <sup>^</sup>	2	390	780	1560
2 Bedroom Villa <sup>+</sup>	2	510	820	1640
Deep Blue 2 Bedroom Apartment <sup>+</sup>	2	N/A	1260	2520
Deep Blue 3 Bedroom Apartment <sup>+</sup>	2	N/A	1460	2920
Deep Blue 4 Bedroom Apartment <sup>+</sup>	2	N/A	1660	3320
6 – 9 APR 12, 29 – 31 MAR 13				
Hotel Room	2	720	1080	1440
Resort Unit	2	820	1230	1640
Resort Suite	2	860	1290	1720
Hotel Deluxe Room	2	900	1350	1800
2 Bedroom Villa	2	N/A	1530	2040
Deep Blue 2 Bedroom Apartment	2	N/A	2340	3120
Deep Blue 3 Bedroom Apartment	2	N/A	2640	3520
Deep Blue 4 Bedroom Apartment	2	N/A	2940	3920

<sup>^</sup> 2 night minimum stay applies 24 Dec 12 – 7 Jan 13. <sup>+</sup> 3 night minimum stay applies 24 Dec 12 – 7 Jan 13. Extra person charge: \$30 per person per night.

**Includes** Wild dolphin feeding on one night. Hotel Deluxe Rooms include guaranteed top floor, use of bathrobes and slippers, a bottle of wine and chocolates in room on arrival.

**Children** 0 to 2 years – cot free of charge. 3 to 14 years – adult prices apply.

**Max capacity** Hotel Room/Resort Unit/Hotel Deluxe Room – 4, Resort Suite – 5, 2 Brm Villa – 7, Deep Blue 2 Brm Apt – 6, Deep Blue 3 Brm Apt – 8, Deep Blue 4 Brm Apt – 10.

TANMOR



Resort Suite



Hotel Deluxe Room



Deep Blue 2-Bedroom Apartment